

Montana Bureau of Mines and Geology  
Open File No. 432

Preliminary Geologic Map of the  
Broadus 30' x 60' Quadrangle,  
Eastern Montana

Compiled and mapped by Susan M. Vuke, Edward L. Heffern,  
Robert N. Bergantino, and Roger B. Colton

2001

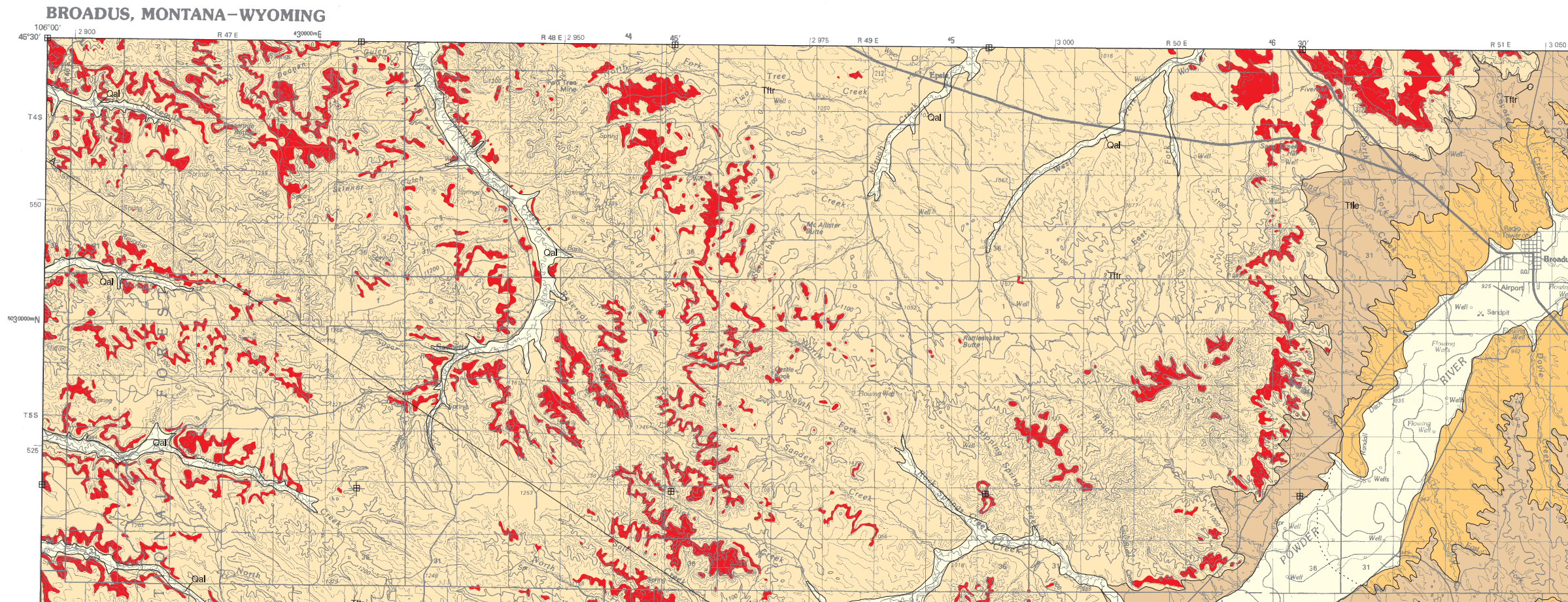
To view a full scale version of this map, [click here](#).

For the text files with the map information, [click here](#).

[Digital data link](#)

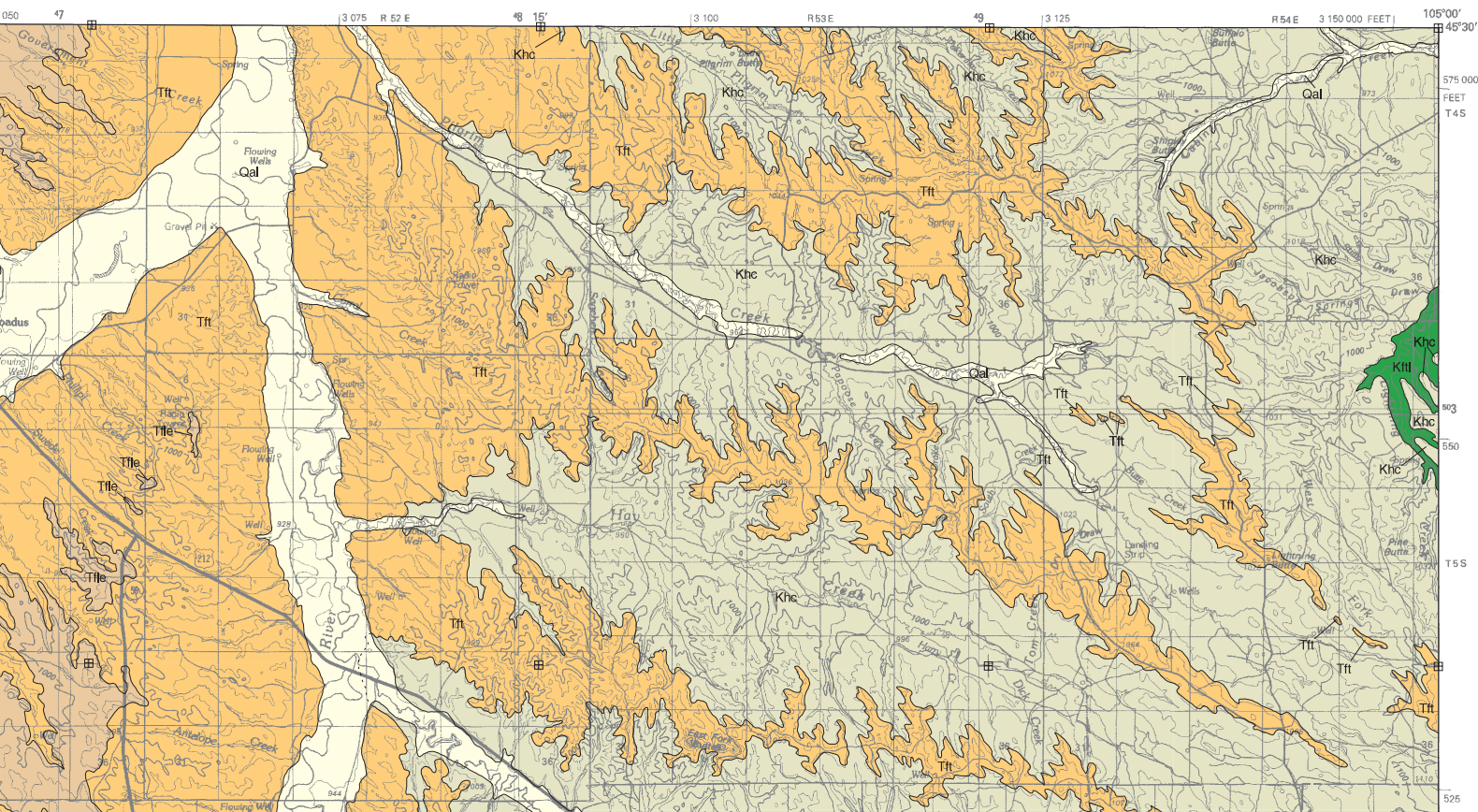
Note— This map was originally published at a scale of 1:100,000 but the page sizes have been modified to fit average printer capabilities (8½ x 14; legal size paper). There is an eighth inch overlap on these pages. A full sized colored print of this map can be ordered from the MBMG Publication Sales Office, 1300 West Park Street, Butte, MT, 59701-8997.

Open File MBMG 432, Plate 1 of 1  
Geologic Map, Broadus 30'x60' Quadrangle





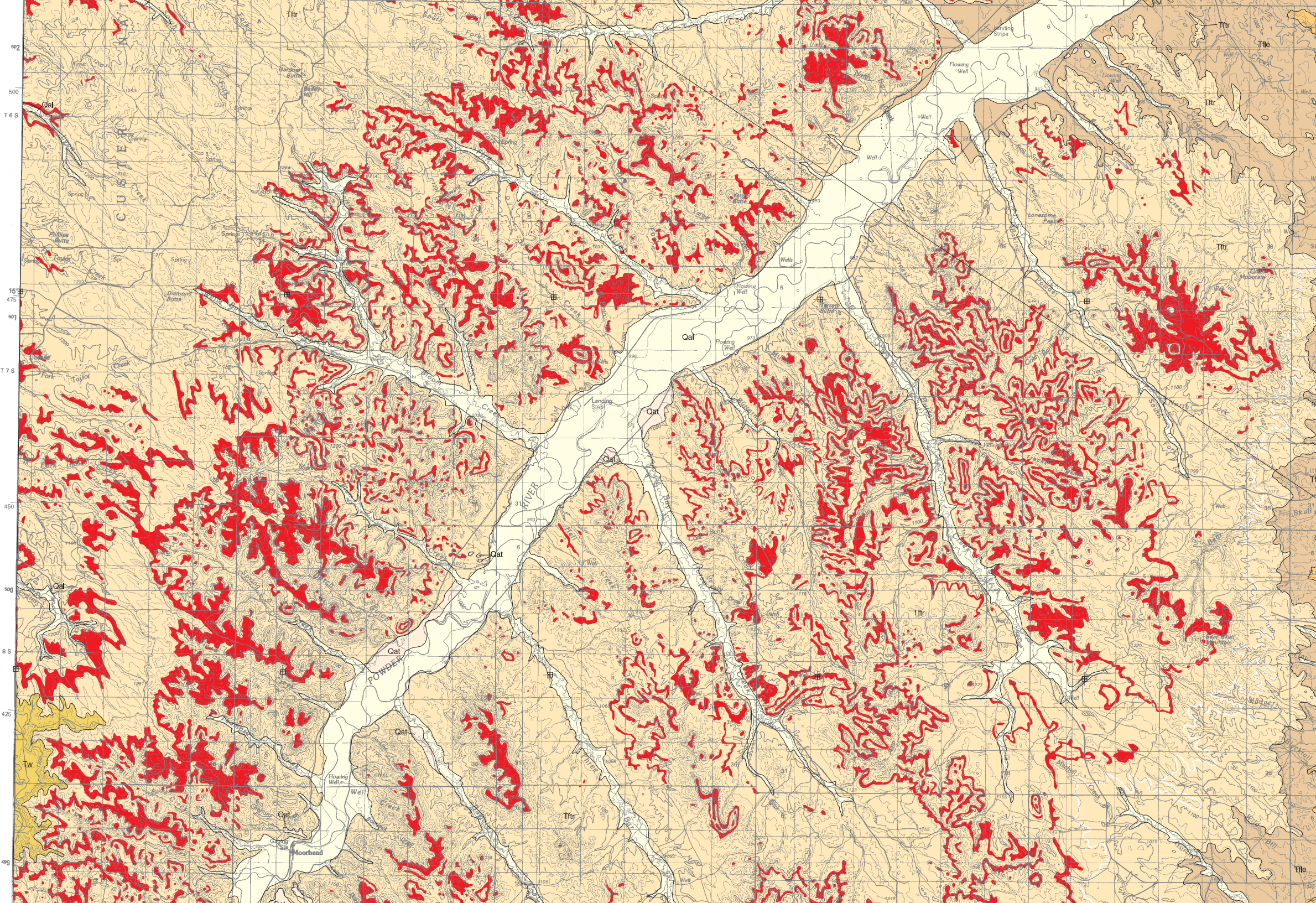
**MONTANA BUREAU OF MINES AND GEOLOGY**  
 A Department of Montana Tech of The University of Montana



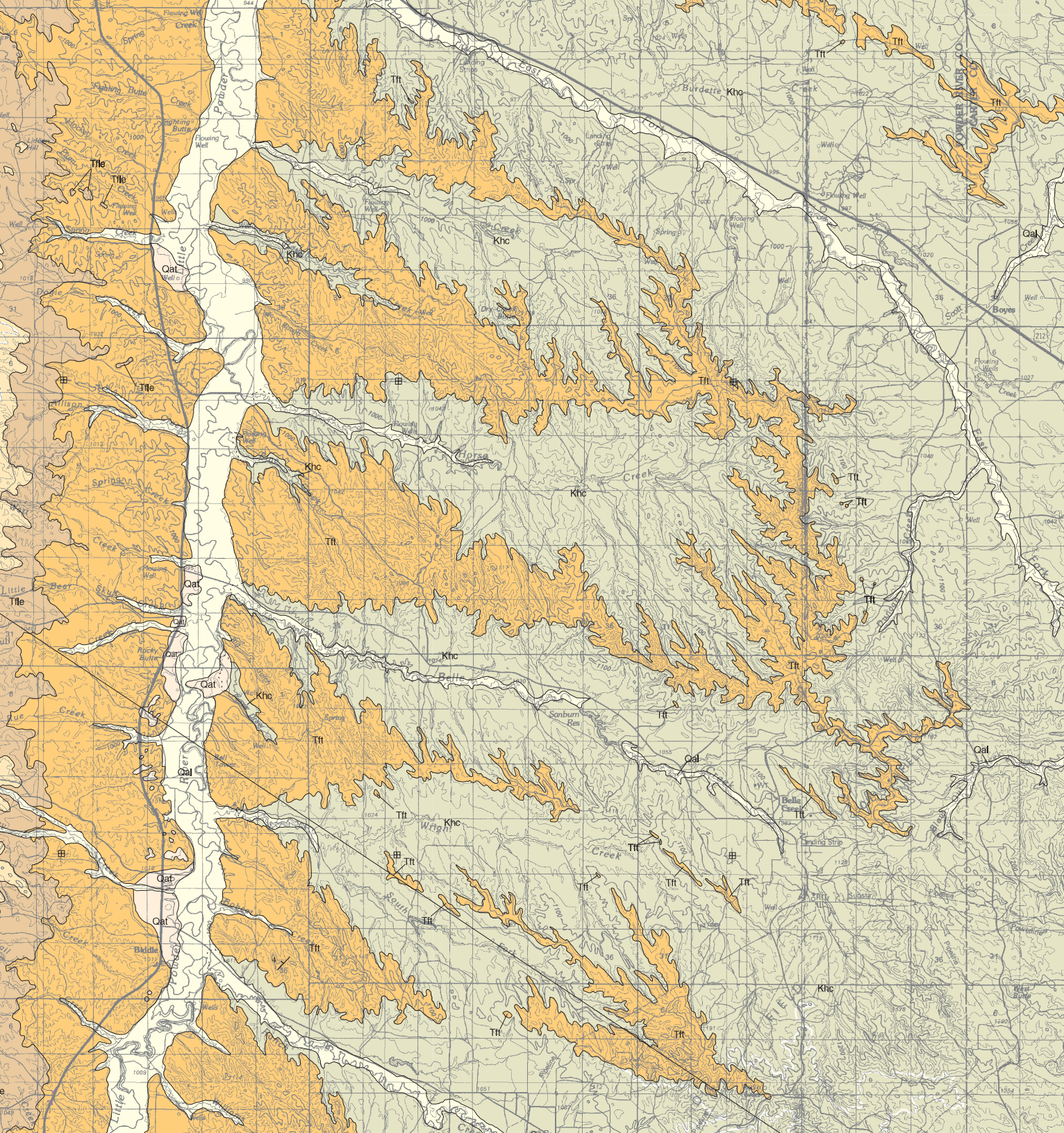
**MAP UNITS**

Qal	Alluvium of modern channels and flood plains
Qat	Alluvium of alluvial terrace deposit
Q.Tcl	Clinker
Tw	Wasatch Formation
Ttfr	Tongue River Member of Fort Union Formation
Ttle	Lebo Member of Fort Union Formation









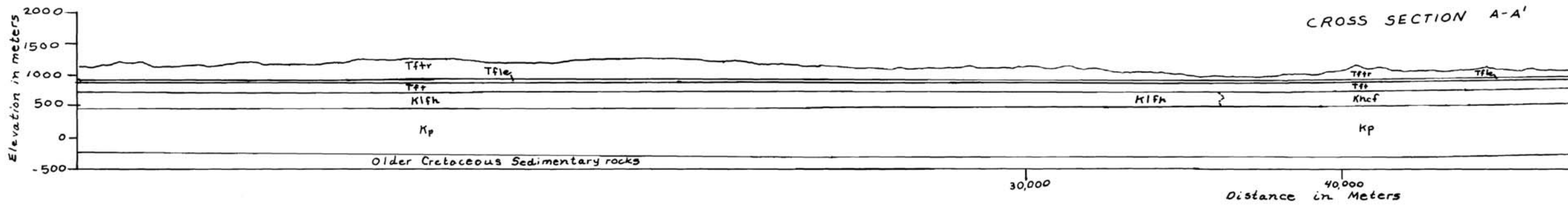
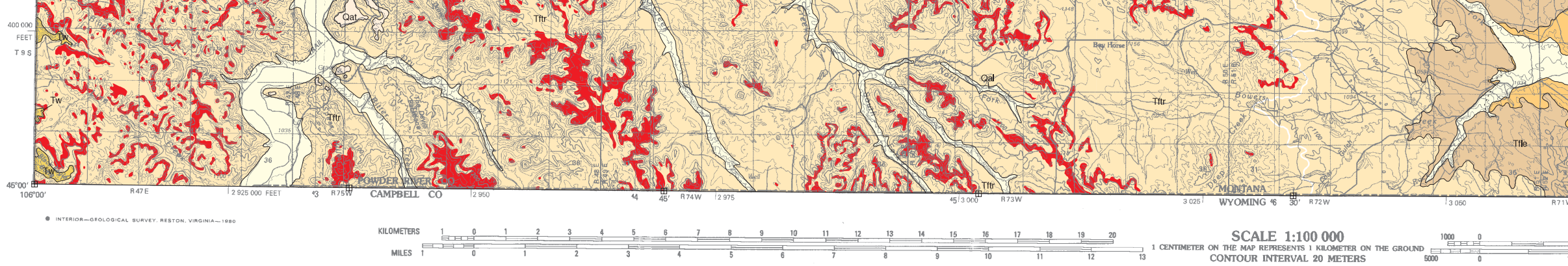
- Tft Tullock Member of Fort Union Formation
- Khc Hell Creek Formation
- Kftl Timber Lake Member of Fox Hills Formation
- Kftc Trail City Member of Fox Hills Formation

 Silcrete bed



525  
500  
475  
450  
425  
T 6 S  
T 7 S  
T 8 S  
100  
125  
150  
175  
200  
225  
250  
275  
300  
325  
350  
375  
400  
425  
450  
475  
500  
525





Montana Bureau of Mines and Geology  
Open File No. 432

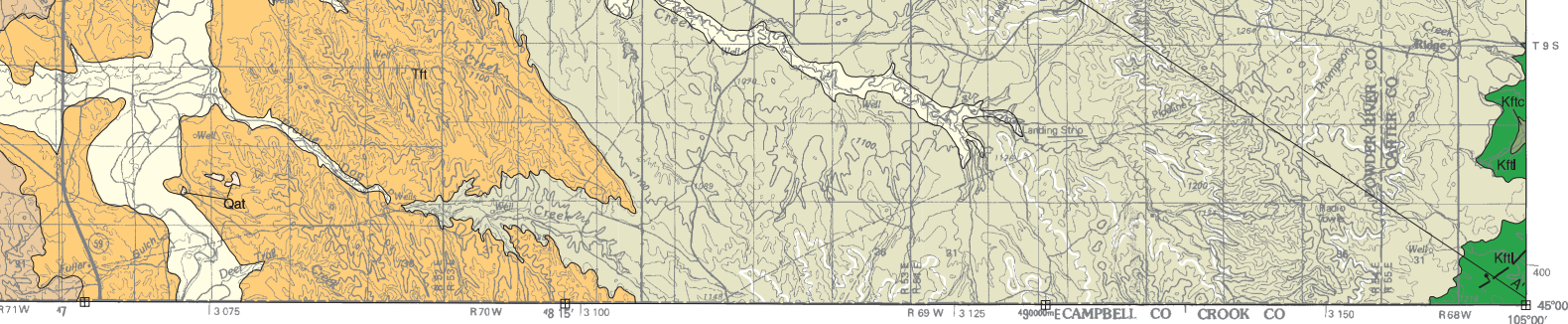
Geologic Map of the Broadus  
30' x 60' Quadrangle, Eastern Montana

Compiled and mapped by Susan M. Vuke, Edward L. Heffern,  
Robert N. Bergantino, and Roger B. Colton

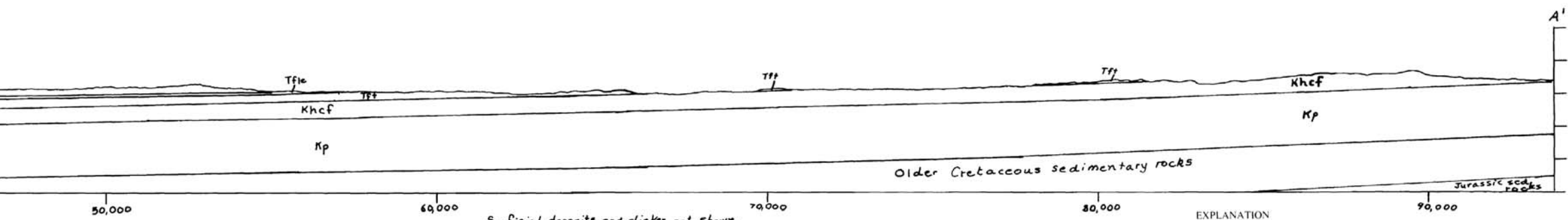
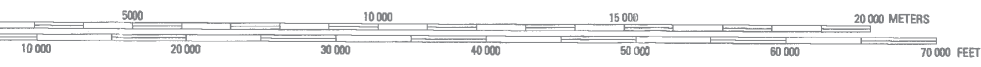
2001

Partial support has been provided by the STATEMAP computer  
Mapping Program of the U.S. Geological Survey under Contract

GIS production: Ken Sandau and Paul Thale, MBMG; Map



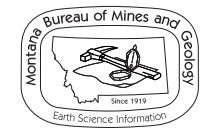
**BROADUS, MONTANA-WYOMING**  
**N4500-W10500/30x60**  
**1980**



Surficial deposits and clinker not shown.  
 Vertical exaggeration - 2x  
 Datum mean sea level.

Sources:  
 Denson and others (1993), Fox (1993), McLellan, (1991).

EXPLANATION	
Tffr	Fort Union Formation Tongue River Member
Tfle	Lebo Member
Tft	Tullock Member
Khef	Hell Creek and Fox Hills Formations, undivided
Klfh	Lance and Fox Hills Formations, undivided
Kp	Pierre Shale
Approximate nomenclature change from <i>Lance and Fox Hills Formations, undivided</i> to left of symbol (sw on map) to <i>Hell Creek and Fox Hills Formations, undivided</i> to right of symbol (ne on map).	



Maps may be obtained from  
 Publications Office  
 Montana Bureau of Mines and Geology  
 1300 West Park Street, Butte, Montana 59701-8997  
 Phone: (406) 496-4167 Fax: (406) 496-4451  
<http://www.mbm.mtech.edu>

Component of the National Cooperative Geologic  
 Contract Number 00-HQ-AG-0115.

Map layout: Susan Smith, MBMG.