

STATE OF MONTANA  
BUREAU OF MINES AND GEOLOGY  
E. G. Koch, Director

BULLETIN 65

WATER LEVELS AND ARTESIAN PRESSURES  
IN  
OBSERVATION WELLS IN MONTANA  
THROUGH 1967

by

T. E. Reed and R. G. McMurtrey  
U.S. Geological Survey

This bulletin has been prepared by the United States Geological Survey, Water Resources Division, under a cooperative agreement with the Montana Bureau of Mines and Geology.



MONTANA COLLEGE OF MINERAL SCIENCE AND TECHNOLOGY  
Butte, Montana  
March 1968



## CONTENTS

	Page
Introduction . . . . .	1
Description of wells . . . . .	3
Occurrence of ground water . . . . .	4
Fluctuations of the water level . . . . .	9
References cited . . . . .	39

## ILLUSTRATIONS

### Figure

1. Drainage basins and areas for which project reports contain periodic water-level measurements . . . . .	3
2. Map showing location of observation wells in upper Missouri River drainage area . . . . .	5
3. Map showing location of observation wells in lower Missouri River drainage area . . . . .	6
4. Map showing location of observation wells in Yellowstone, upper Musselshell, and Little Missouri River drainage areas . . . . .	6
5. Map showing location of observation wells in Columbia River drainage area. . . . .	7
6. Sketch showing well-numbering system . . . . .	8
7. Graphs of water levels in wells B-9-20-21ad1, B-13-20-14ac, and D-1-26-9bb. . . . .	10
8. Graphs of water levels in wells A-14-16-15bb, A-28-57-28dd, and A-7-47-13dd . . . . .	11
9. Graphs of water levels in wells A-10-58-18dc and A-12-56-23dc. . . . .	12

## TABLES

### Table

1. U. S. Geological Survey Water-Supply Papers in which water-level measurements in federal observation wells in Montana have been published . . . . .	2
2. Well descriptions and water-level measurements . . . . .	13





WATER LEVELS AND ARTESIAN PRESSURES  
IN  
OBSERVATION WELLS IN MONTANA  
THROUGH 1967

by

T. E. Reed and R. G. McMurtrey

INTRODUCTION

A continuing program of systematic collection of records of water levels in selected observations wells has been made part of a program for the investigation of the ground-water resources of Montana by the U.S. Geological Survey in cooperation with the Montana Bureau of Mines and Geology. This report is the second in a series of annual reports of water-level records for all permanent observation wells in Montana. It includes all data published in the first report of the series and data for 38 additional wells. Future reports will be organized so that the report for each fifth year will be a compilation of the previous 5 years. The 5-year periods will end on years divisible by 5 (1970, 1975, 1980). A report may contain 1 to 5 years of data, depending on which year it is written. For example, the 1968 report will cover 3 years of data (1966-68), the 1970 report 5 years (1966-70), the 1971 report 1 year (1971), and the 1975 report 5 years (1971-75).

The intent of the water-level measurement program is to provide long-term continuous records of fluctuations of the water level in representative wells in the various aquifers throughout the state. Recognized uses of such records are: (1) to facilitate the prediction of trends in ground-water levels that indicate changes in storage; (2) to serve as a framework to which shorter records from project studies may be related; (3) to aid in prediction of base flow of streams; (4) to appraise the relationship between water-level fluctuations and precipitation, pumping, and other factors; (5) to identify areas of detrimentally low or high ground-water levels; and (6) to provide

information for use in basic research. Records for the foregoing and other uses need to be compiled and published in a manner that will assure their current and future availability.

The systematic collection of data on ground-water levels in Montana was begun in 1947 under a federal program to develop a nationwide observation-well network. It continued under this program until 1964, when state funds were made available through the State Engineer to expand the network. In 1965 the observation-well network was made a part of the cooperative ground-water program of the Montana Bureau of Mines and Geology. Before 1956, water-level measurements were published annually by the U.S. Geological Survey as water-supply papers. Since 1956, the records of water levels in the federal network of observation wells have been published in 5-year increments. Those water-supply papers in which measurements of water levels in federal observations wells in Montana have been published are listed in Table 1.

Table 1. --U.S. Geological Survey Water-Supply Papers in which water-level measurements in federal observation wells in Montana have been published.

Year	Water-Supply Paper	Year	Water-Supply Paper
1935	777	1948	1130
1936	817	1949	1160
1937	840	1950	1169
1938	845	1951	1195
1939	886	1952	1225
1940	910	1953	1269
1941	940	1954	1325
1943	990	1955	1408
1944	1020	1956-60	1760
1947	1100		

In addition to the permanent observation wells, project observation wells are established in connection with each areal study. Water-level measurements made periodically in these wells are published in project reports. When a study is completed, selected project observation wells are added to the network of permanent observation wells. Figure 1 shows study areas in Montana for which reports that contain periodic water-level measurements have been published. References for the reports are keyed to the numbers shown on Figure 1 and are listed in the "References cited".

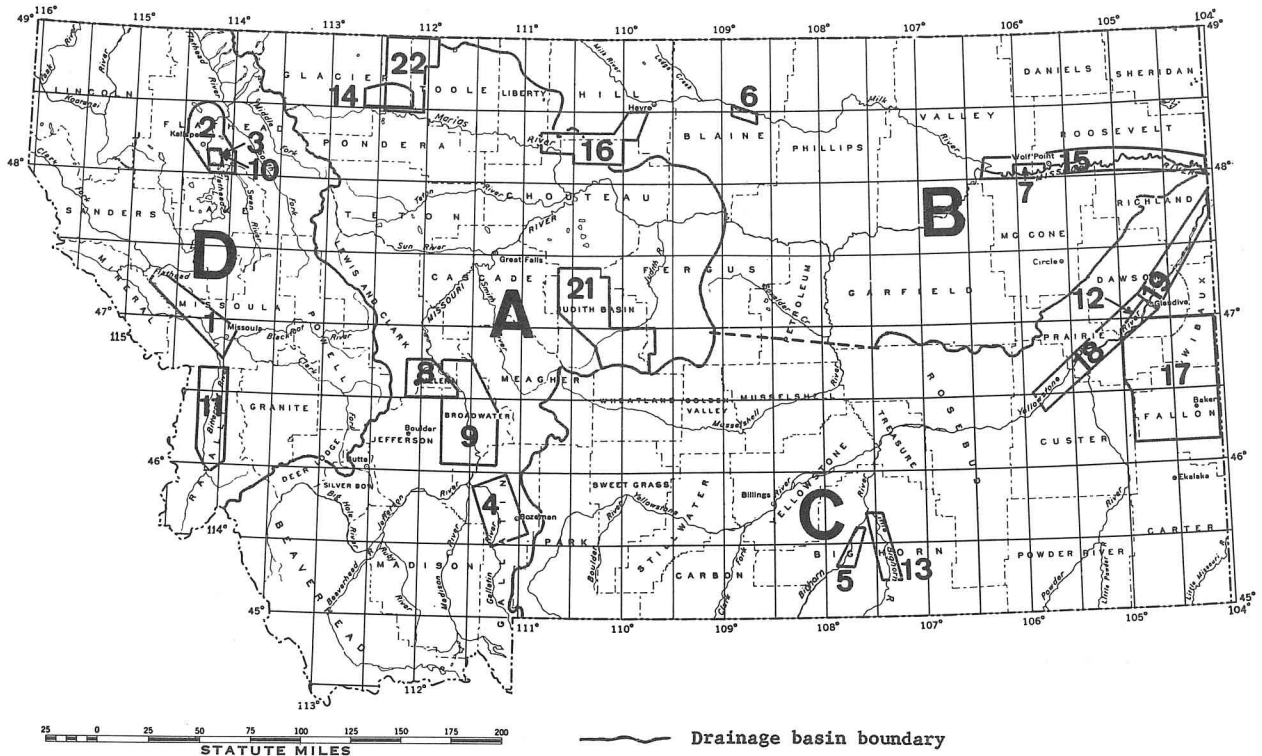


Figure 1. --Drainage basins and areas for which project reports contain periodic water-level measurements. (Numbers correspond to the report reference number shown in "References Cited"; letters show drainage basins: A, upper Missouri; B, lower Missouri; C, Yellowstone, upper Musselshell, and Little Missouri; and D, Columbia.)

Figures 2, 3, 4, and 5 show the location of wells for which records are included in this report, and Table 2 contains water-level measurements for each of the wells, except federal observation wells, through the 1967 water year. Water-level measurements in the federal observation wells are included from January 1961 through the 1967 water year. The measurements are published on the basis of the water year to facilitate comparison with streamflow records. The water year is the 12-month period ending September 30 of each year. It is designated by the calendar year in which it ends. Thus, the year that ends September 30, 1967, is called the 1967 water year.

## DESCRIPTION OF WELLS

The tabulation of water-level data is preceded by a description of the well (Table 2). Each well is assigned a number based on its location within the system of land subdivision used by the U. S. Bureau of Land Management. The well number shows the location of the well by quadrant,

township, range, section, and position within the section. A graphic illustration of this method of well numbering is shown in Figure 6. The first letter of the well number gives the quadrant of the Montana principal meridian and base-line system in which the well is located. The first numeral indicates the township, the second the range, and the third the section in which the well is located. Lowercase letters that follow the section number show the location of the well within the quarter section (160-acre tract) and the quarter-quarter section (40-acre tract). These subdivisions are designated a, b, c, and d in a counterclockwise direction, beginning in the northeast quadrant. If two or more wells are located within the same 40-acre tract, consecutive digits beginning with 1 are added to the well number. For example, well B-9-20-21ad1 is in the SE $\frac{1}{4}$  NE $\frac{1}{4}$  sec. 21, T. 9 N., R. 20 W., and is the first well inventoried in that 40-acre tract.

The well number is followed by the owner's name, the type of well (water-table or artesian), and the geologic setting or geologic formation. The diameter is reported in inches (in.) and the depth in feet (ft.) below land-surface datum (lsd). All levels are read from a measuring point (MP) which is related to either lsd or mean sea level (msl). Altitude of MP, where known, is given in feet above msl. Water levels are in feet below lsd, except where a plus (+) sign indicates a level above lsd.

## OCCURRENCE OF GROUND WATER

The initial source of most ground water is precipitation, which varies widely over Montana. The averages for the seven climatological divisions set up by the U.S. Weather Bureau in the state range from 13.07 inches in the north-central division to 19.04 inches in the western division. The lowest long-term average at an individual station is 9.79 inches, and the highest is 34.38 inches; however, seven of nine seasons at a station in Glacier National Park have produced totals of more than 100 inches. Much of the water from precipitation returns to the atmosphere by evaporation or transpiration or flows overland; part seeps into the soil zone and percolates downward to the underground reservoirs. Water in these reservoirs occurs in open spaces known as voids, interstices, pore spaces, joints, fractures, or solution channels in the rocks mantling the state. The size, shape, character, and distribution of the open spaces determine, to a great extent, the occurrence of ground water. The open spaces are generally interconnected and act as minute conduits through which the water moves laterally at a slow rate until it is discharged to the earth's surface through springs, wells, and effluent streams, or to the atmosphere by evaporation and plant transpiration. Under natural conditions, over a long period of time, the amount of water that is added to ground-water storage is in approximate equilibrium with the amount that is discharged.

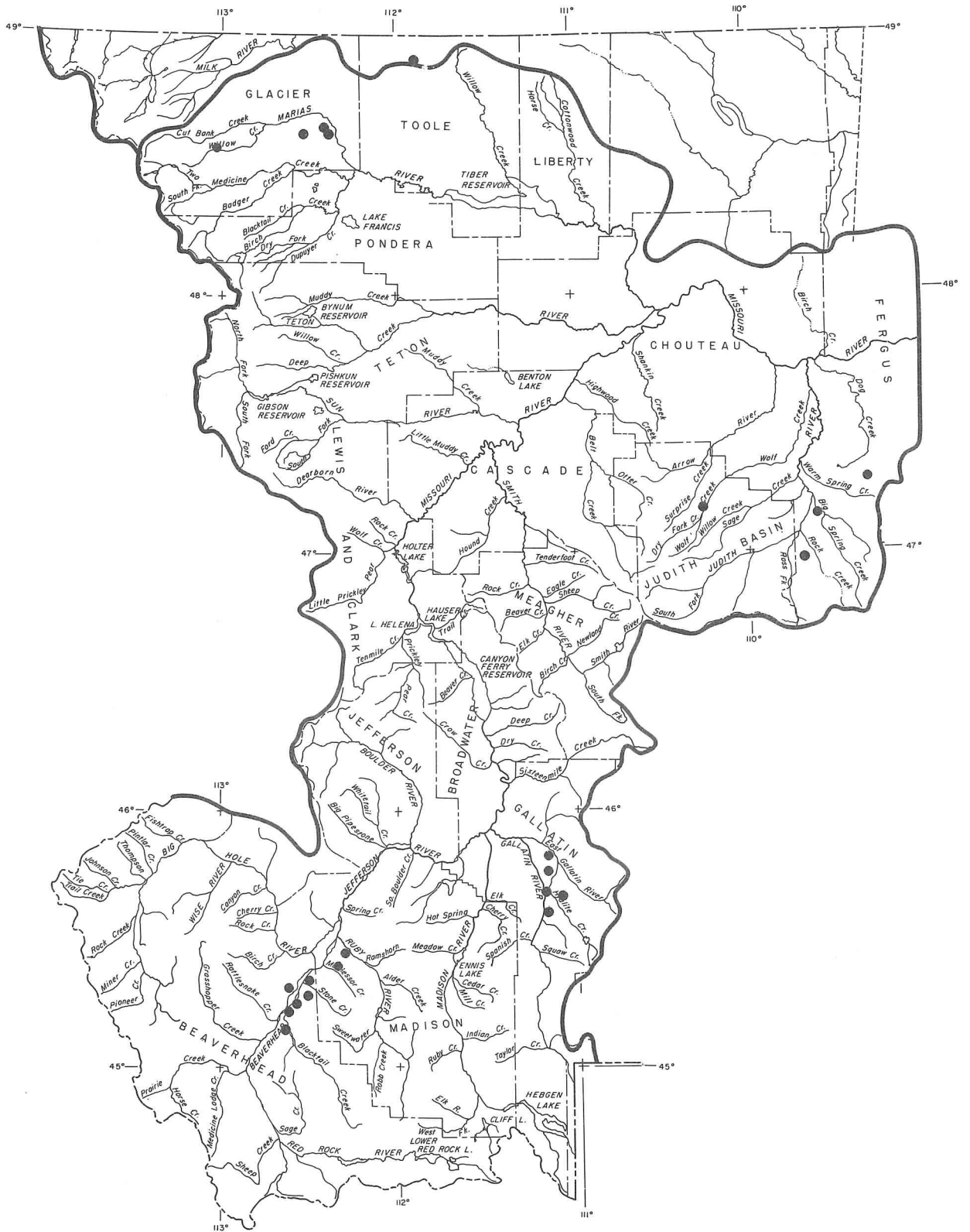


Figure 2. --Map showing location of observation wells in upper Missouri River drainage area.

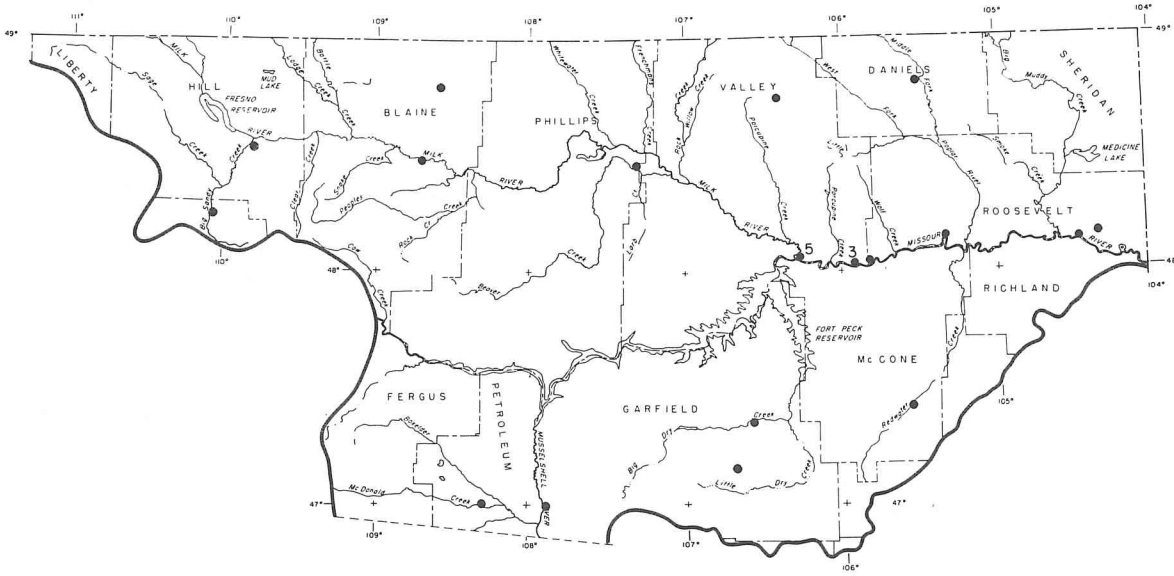


Figure 3. --Map showing location of observation wells in lower Missouri River drainage area.

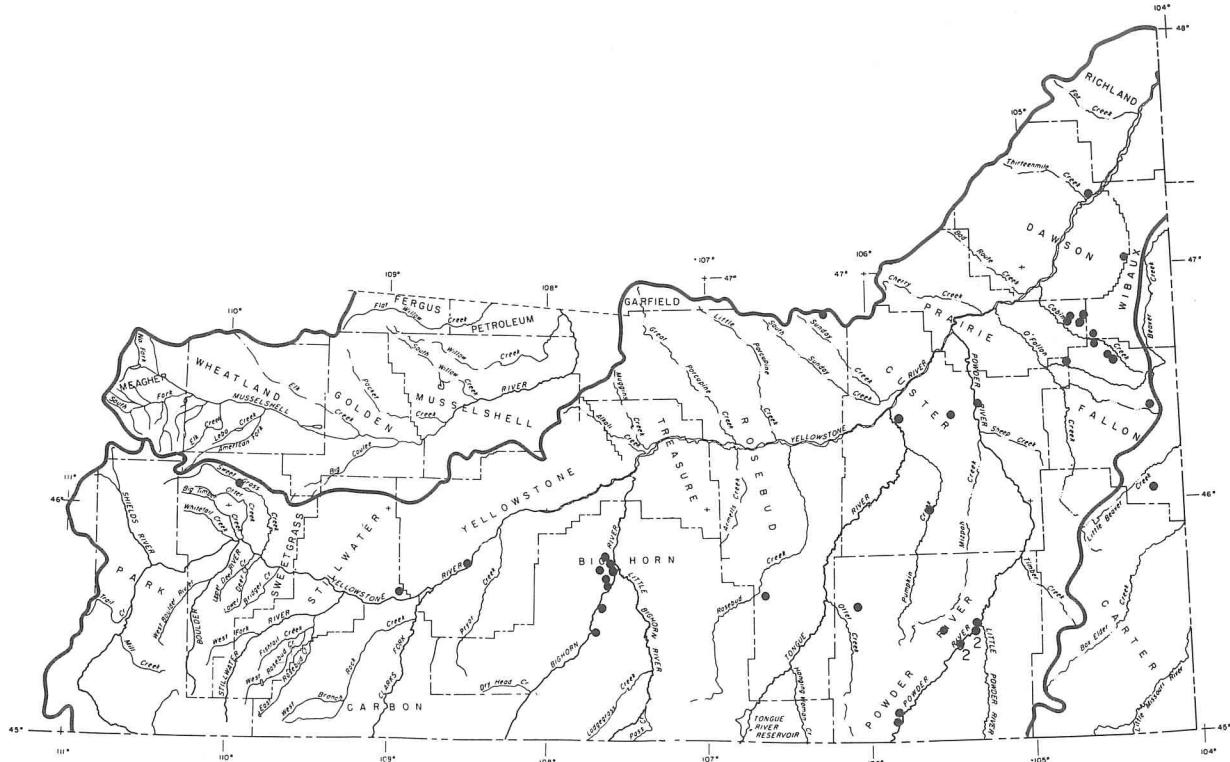


Figure 4. --Map showing location of observation wells in Yellowstone, upper Musselshell, and Little Missouri River drainage areas.

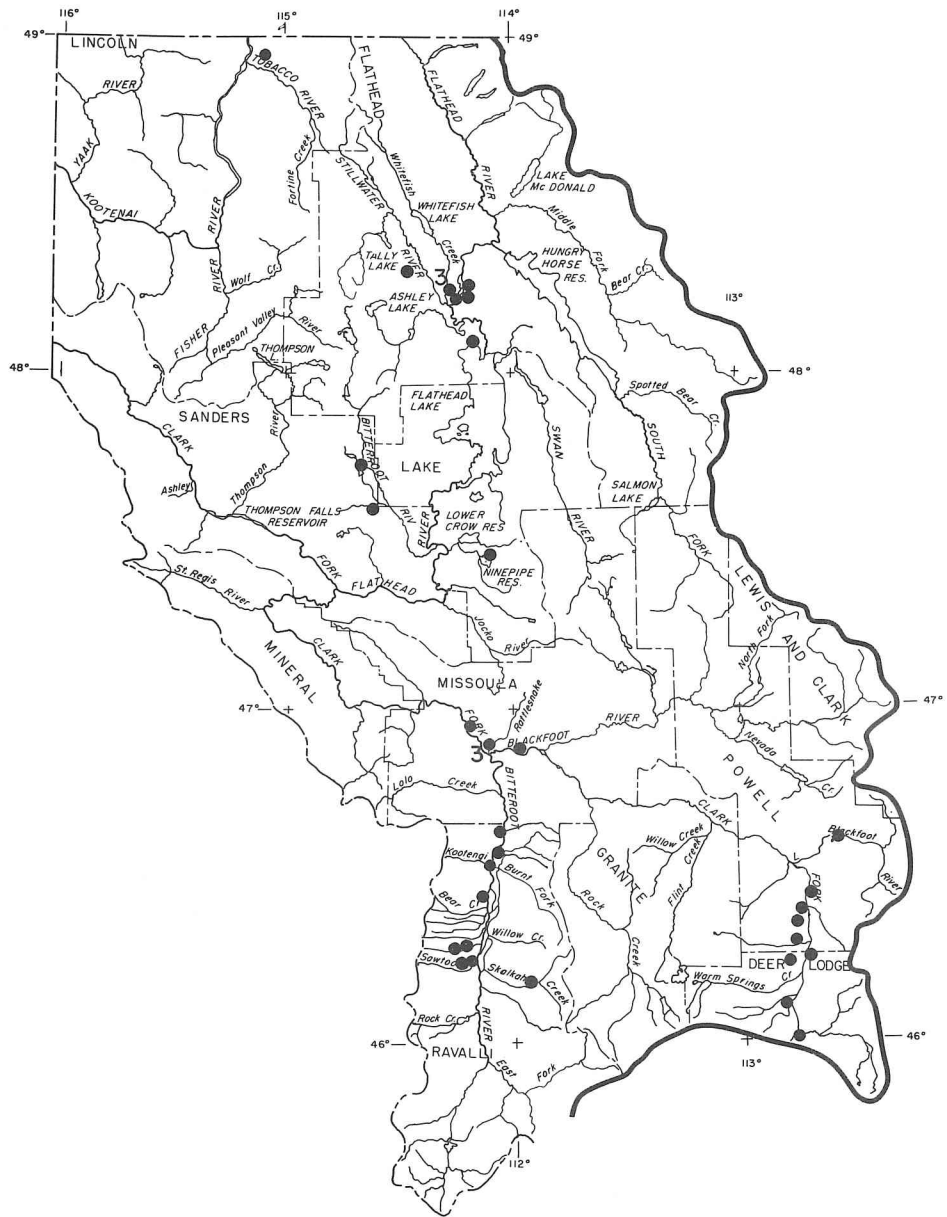


Figure 5. --Map showing location of observation wells in Columbia River drainage area.



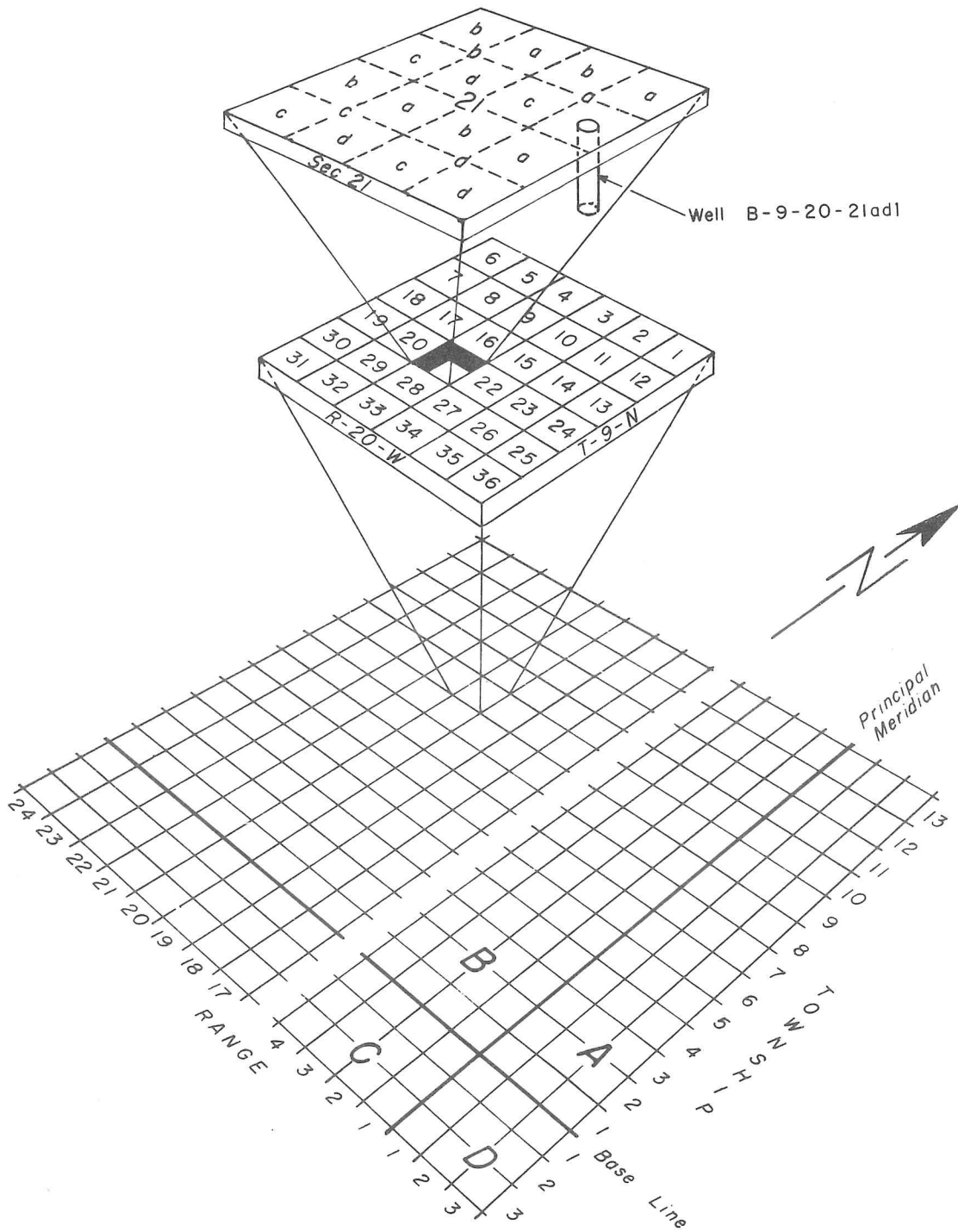


Figure 6. --Sketch showing well-numbering system.



Ground water in Montana occurs under a wide range of conditions and in varying degrees of usefulness. Throughout most of the state it can be obtained from wells drilled into one or more of the numerous aquifers, but not necessarily at a reasonable cost or in the quantity or of the quality desired. An aquifer is a geologic formation that transmits water in sufficient quantity to supply pumping wells or springs. In some areas of the state, ground water is relatively difficult to obtain, and aquifers yielding only a few gallons of water per minute are of considerable importance. In other areas where aquifers may yield several hundred gallons per minute, formations capable of yielding small amounts may be classed as nonproductive.

Aquifers may be classified as water-table or artesian. A water-table aquifer is exposed at the surface and contains a saturated zone and an unsaturated zone. The surface within the saturated zone at which the pressure is atmospheric is known as the water table. The water level in a well that is hydraulically connected with the aquifer coincides with the water table. An artesian aquifer is overlain by relatively impermeable material (material through which water does not move readily) and contains water under sufficient pressure to rise above the top of the aquifer if penetrated by a well. If the pressure is sufficient to raise the water above the land surface, a well penetrating the aquifer will flow.

## FLUCTUATIONS OF THE WATER LEVEL

Water levels in wells are almost constantly fluctuating, and may decline or rise a fraction of an inch or many feet in a relatively short time. They are influenced by factors such as seasonal changes in rate of recharge to and discharge from the aquifers, local geology, direct recharge from precipitation, local irrigation practices, pumping from nearby wells, evaporation and transpiration of water by vegetation, and by changes in water levels in nearby lakes, streams, or drains. In artesian wells, changes in water level may occur quickly over large areas as a result of pumping. Temporary influences on the water levels in artesian wells result from changes in atmospheric pressure, earthquakes, earth tides, changes in surface-water stage, and changes in surface loading.

In Montana, water-level fluctuations generally are cyclical, reflecting seasonal changes in the amount of water in storage, which varies because of differences in rates of recharge and discharge (Fig. 7, 8, and 9). The water levels generally rise during the spring and summer and decline during the fall and winter. Long-term trends in water-level fluctuations may be impressed locally on the seasonal cycle. These trends reflect deficient or surplus recharge over a period of years, owing to natural climatic variations or to man-induced variations such as a change in irrigation pattern, land drainage, or pumping from wells.

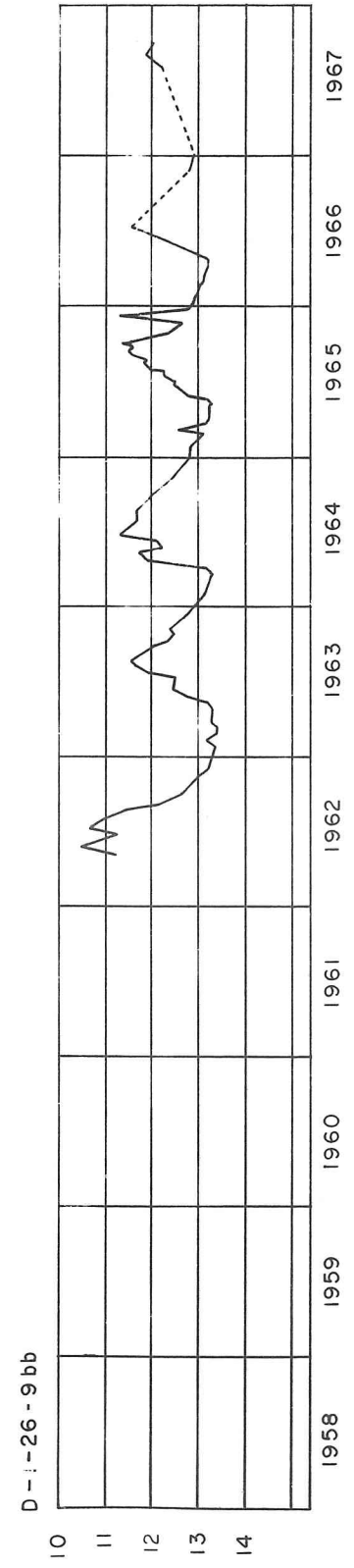
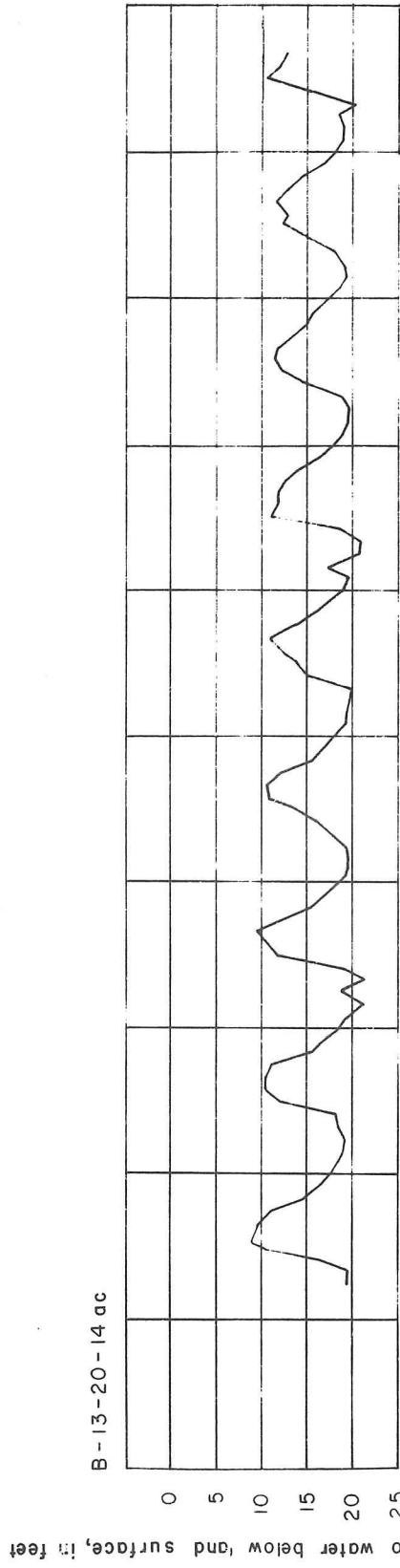
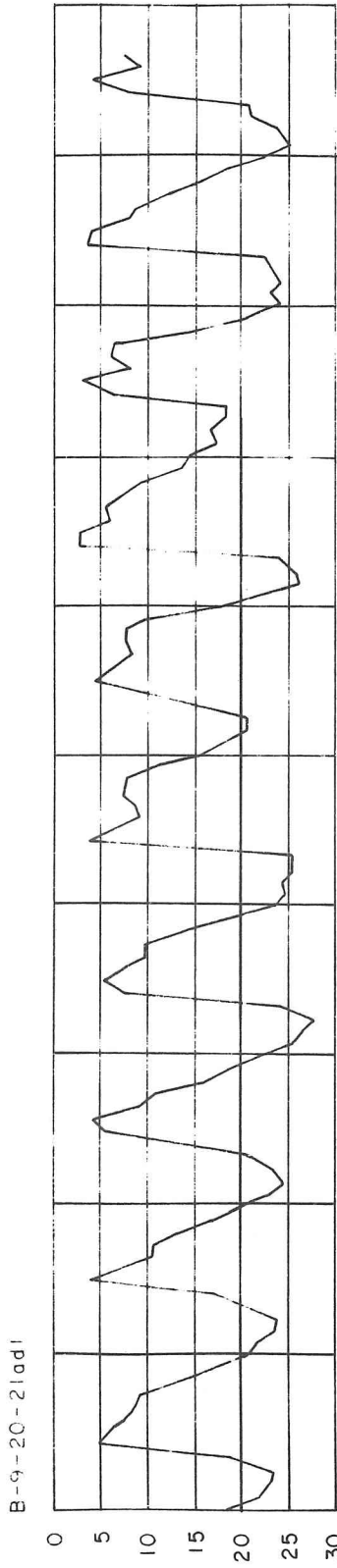


Figure 7. --Graphs of water levels in wells B-9-20-21ad1, B-13-20-14ac, and D-1-26-9bb.

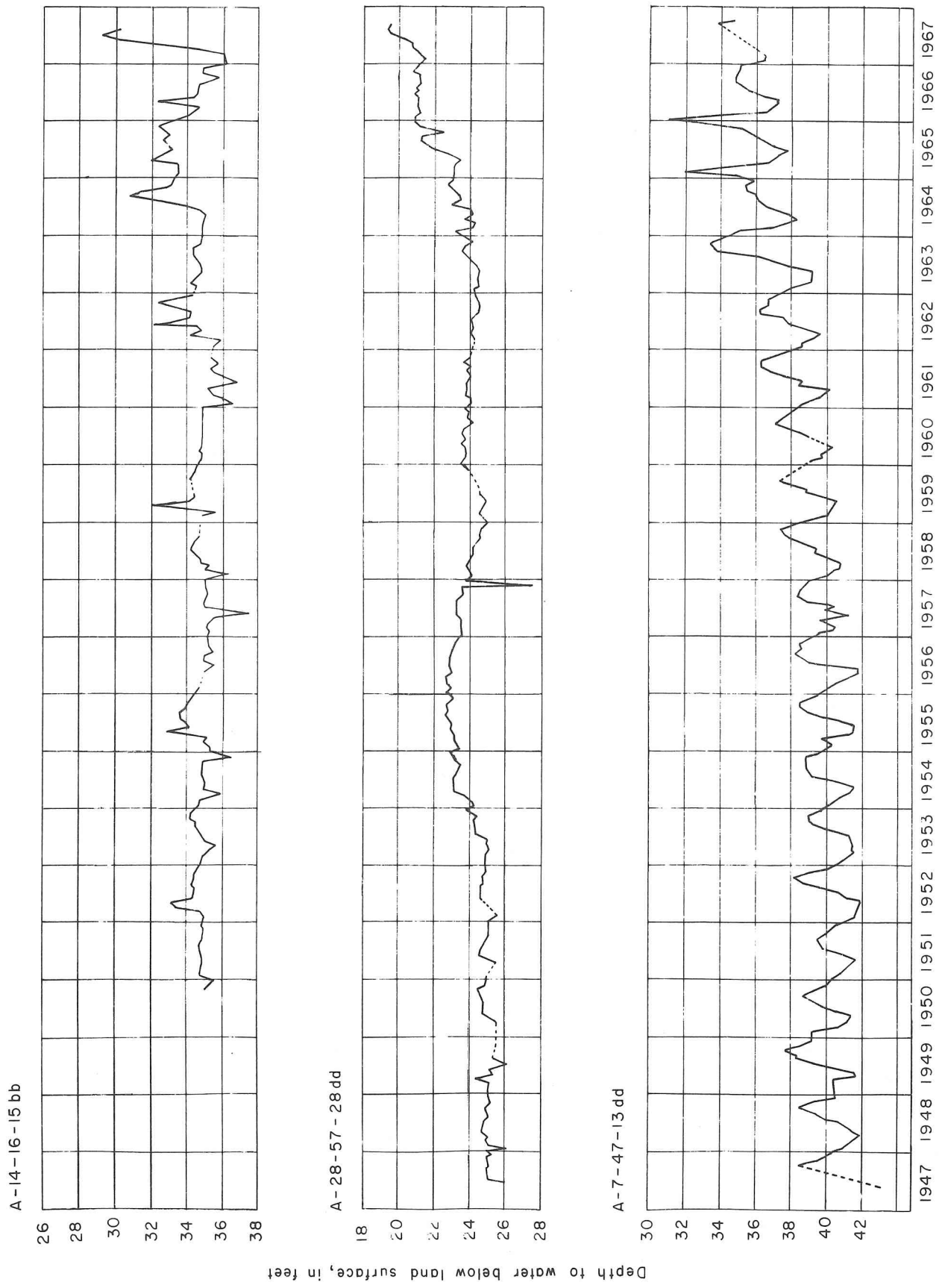


Figure 8. --Graphs of water levels in wells A-14-16-15bb, A-28-57-28dd, and A-7-47-13dd.

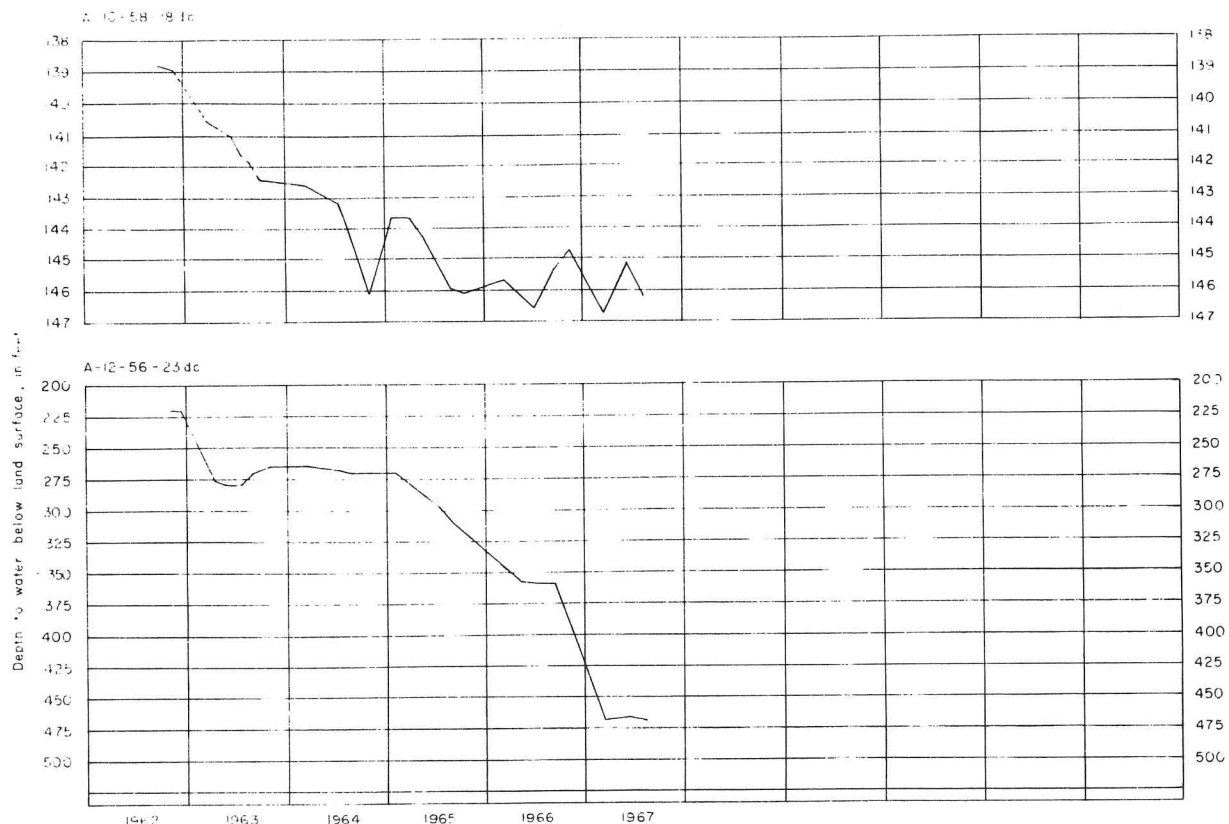


Figure 9. --Graphs of water levels in wells A-10-58-18dc and A-12-56-23dc.

The seasonal trend is illustrated by the graphs of water levels in Figure 7. Two of the wells (B-9-20-21ad1 and B-13-20-14ac) are in intermontane basins of western Montana and the third is in the Yellowstone River basin of eastern Montana. The pattern of water-level fluctuations is similar in all three wells, because water for recharge is available at each well at about the same time. The magnitude of fluctuation differs, owing to differences in the quantity of water available for recharge, the geologic setting of the well, and the permeability of the materials in which the well is drilled.

Trends in water-level fluctuations impressed on the seasonal cycle are shown in Figures 8 and 9. The graph of water-level measurements for well A-14-16-15bb shows sharp peaks caused by heavy precipitation or snowmelt and some sharp lows probably caused by pumping water from the materials in which the well is located. The graph for well A-28-57-28dd shows the effect of above-normal precipitation for 1953-55 and below-normal for 1956-58. Departures from normal precipitation after 1958, however, do not correlate as well with trends shown on the graph. A surplus of recharge from 1957 to 1967 is shown by the graph for well A-7-47-13dd. It is probably caused by increased recharge from irrigation. Pumpage of water from nearby wells is reflected in the graphs for wells A-10-58-18dc and A-12-56-23dc. The magnitude of the lowering of the water levels overshadows any seasonal cycle that may have occurred.

Table 2. --Well descriptions and water-level measurements.

Water levels are reported in feet below land-surface datum

Date	Water level	Date	Water level	Date	Water level	Date	Water level
<u>Beaverhead County</u>				<u>C-7-8-3db2--Continued</u>			
<p>C-6-7-6aa. U. S. Bureau of Reclamation. Drilled observation water-table well in terrace deposits of Tertiary age, diameter 1 1/4 inches, depth 107.1 feet, cased with pipe. MP top of pipe, 2.8 feet above lsd. Highest water level 61.46 below lsd, Oct. 14, 1965; lowest 67.54 below lsd, May 29, 1965. Records available: 1965-67.</p>				<p>Dec. 4, 1965 18.08 Oct. 4, 1966 15.75            Jan. 5, 1966 18.7* Dec. 6 17.97            Feb. 9 18.74 Feb. 7, 1967 18.80            Mar. 3 19.2* Apr. 5 19.10            Apr. 5 25.29 June 12 16.08            June 8 13.76 Aug. 3 15.36            July 14.3*            Aug. 3 12.34</p>			
Dec. 5, 1964	64.54	June 8, 1966	64.53	* Measured by U. S. Bureau of Reclamation			
Jan. 13, 1965	65.80	Aug. 4	62.88	<p>C-7-9-24dd. U. S. Bureau of Reclamation. Drilled observation water-table well in alluvium. MP top of pipe, 2.0 feet above lsd. Highest water level 7.34 below lsd, Aug. 2, 1965; lowest 23.30 below lsd, Apr. 4, 1966. Records available: 1965-67.</p>			
Apr. 10	67.39	Oct. 5	61.84	Apr. 6, 1965	23.29	June 7, 1966	11.66
May 29	67.54	Dec. 7	64.56	May 30	15.10	July	12.7*
Aug. 6	62.53	Feb. 6, 1967	66.01	Aug. 2	7.34	Aug. 2	9.99
Oct. 14	61.46	Apr. 3	66.66	Oct. 12	11.15	Oct. 4	8.20
Dec. 8	63.49	June 22	65.53	Nov. 15	12.5*	Dec. 6	18.36
Feb. 10, 1966	65.57	Aug. 1	62.49	Dec. 3	14.09	Feb. 7, 1967	22.95
Apr. 6	66.58			Jan. 4, 1966	18.6*	Apr. 4	23.05
<p>C-6-7-30cc. U. S. Geol. Survey. Drilled observation artesian well in terrace deposits of Tertiary age, diameter 1 1/2 inches, depth 270 feet. MP top of pipe, 2.0 feet above lsd. Highest water level 244.03 below lsd, Aug. 2, 1967; lowest 248.94 below lsd, Aug. 8, 1965. Records available: 1965-67.</p>				<p>Apr. 8 21.70 June 12 15.76            Mar. 2 22.9* Aug. 3 11.4*            Apr. 4 23.30</p>			
June 28, 1965	247.4*	Aug. 2, 1966	246.04	* Measured by U. S. Bureau of Reclamation			
Aug. 8	248.94	Oct. 5	246.06	<p>C-8-9-1cc. U. S. Geol. Survey. Drilled observation water-table well in alluvial fan deposits, diameter 6 inches, depth feet, cased with pipe. MP top of pipe, 2.5 feet above lsd until Dec. 6, 1966; top of recorder shelf, 3.0 feet above lsd after Dec. 6, 1966. Highest water level 15.37 below lsd, Aug. 4, 1966; lowest 28.02 below lsd, Apr. 4, 1967. Records available: 1966-67.</p>			
Oct. 15	245.91	Dec. 6	245.50	Aug. 4, 1966	15.37	Apr. 4, 1967	28.02
Dec. 4	246.29	Feb. 6, 1967	245.42	Oct. 4	18.65	June 22	21.19
Jan. 5, 1966	246.6*	Apr. 5	244.80	Dec. 6	23.59	Aug. 1	17.03
Feb. 10	245.84	June 21	244.72	Feb. 2, 1967	24.34		
Mar. 4	246.8*	Aug. 2	244.03	<u>Big Horn County</u>			
Apr. 5	246.11			<p>A-1-33-31cd. Wm. Moore. Dug unused water-table well in terrace deposits, diameter 48 inches, depth 27.3 feet, cased with wood, concrete top. MP top of cover, 1.0 foot above lsd and 2,991 feet above msl. Highest water level 19.09 below lsd, May 10, 1966; lowest 22.09 below lsd, Aug. 6, 1958. Records available: 1957-67.</p>			
June 8	246.19			Sept. 26, 1957	21.93	July 2, 1959	21.52
* Measured by U. S. Bureau of Reclamation				Dec. 17	21.96	Aug. 4	21.53
<p>C-6-8-18cc. U. S. Bureau of Reclamation. Drilled observation water-table well in alluvial deposits of Quaternary age, diameter 1 1/4 inches. MP top of pipe, 2.7 feet above lsd. Highest water level 7.69 below lsd, Aug. 3, 1966; lowest 14.69 below lsd, Apr. 5, 1967. Records available: 1965-67.</p>				Mar. 18, 1958	21.90	Sept. 3	21.48
Feb. 2, 1965	12.61	Aug. 3, 1966	7.69	June 6	22.00	Oct. 1	21.48
Apr. 9	14.59	Oct. 5	10.35	July 2	21.95	Nov. 3	21.35
May 31	13.06	Dec. 7	10.80	Aug. 6	22.09	Dec. 11	21.44
Oct. 13	8.97	Feb. 8, 1967	12.78	Sept. 5	21.73	Feb. 5, 1960	21.47
Dec. 7	9.55	Apr. 5	14.69	Oct. 1	21.78	Apr. 13	21.51
Feb. 10, 1966	11.03	June 22	11.26	Feb. 4, 1959	21.69	June 1	21.59
Apr. 5	12.32	Aug. 3	9.99	Apr. 30	21.54	June 28	21.62
June 8	12.15			June 2	21.53	July 28	21.68
<p>C-7-8-3bd2. U. S. Bureau of Reclamation. Drilled observation water-table well in colluvium, diameter 1 1/4 inches, depth 40.5 feet. MP top of pipe, 2.0 feet above lsd and 5,032 feet above msl. Highest water level 11.05 below lsd, Aug. 4, 1965; lowest 25.29 below lsd, Apr. 5, 1966. Records available: 1965-67.</p>							
May 31, 1965	18.44	Oct. 13, 1965	16.67				
Aug. 4	11.05	Nov. 15	17.6*				

Date	Water level	Date	Water level
A-1-33-31cd--Continued			
Aug. 30, 1960	21.69	Nov. 10, 1964	19.75
Oct. 4	21.67	Mar. 3, 1965	19.60
Jan. 11, 1961	21.70	July 8	19.39
Feb. 28	21.74	Oct. 28	19.17
Apr. 5	21.78	Feb. 4, 1966	19.19
June 5, 1962	21.82	May 10	19.09
Sept. 10	21.66	Sept. 1	19.12
Apr. 25, 1963	21.81	Dec. 29	19.68
July 25	21.61	Mar. 27, 1967	19.26
Nov. 1	21.38	June 30	19.40
Apr. 1, 1964	21.18		
Aug. 12	20.32		

D-1-33-10cd. U. S. Geol. Survey. Drilled observation water-table well in terrace deposits, diameter 4 1/2 inches, depth 46 feet. MP top of casing, 0.50 foot above lsd and 2,923.5 feet above msl. Highest water level 12.34 below lsd, Sept. 1, 1966; lowest 18.03 below lsd, Apr. 25, 1963. Records available: 1958-67.

Aug. 5, 1958	13.56	Apr. 4	17.57
Sept. 30	13.59	June 5, 1962	14.74
Feb. 4, 1959	16.72	Sept. 10	13.57
Apr. 29	17.02	Apr. 25, 1963	18.03
June 2	14.70	July 25	13.61
July 2	13.88	Nov. 1	14.79
Aug. 3	13.18	Apr. 1, 1964	17.63
Sept. 3	12.86	Aug. 12	13.25
Oct. 2	13.68	Nov. 10	15.19
Nov. 3	14.87	Mar. 3, 1965	16.58
Dec. 11	14.63	July 8	14.40
Feb. 3, 1960	16.41	Oct. 28	14.34
Apr. 13	17.20	Feb. 4, 1966	16.64
June 1	13.87	May 10	14.80
June 29	13.68	Sept. 1	12.34
July 28	13.08	Dec. 29	16.05
Aug. 30	13.33	Mar. 27, 1967	16.79
Oct. 3	14.13	June 30	14.24
Jan. 11, 1961	16.52		
Feb. 27	17.09		

D-1-33-19da. L. J. Torske. Dug stock water-table well in terrace deposits, diameter 60 inches, depth 25.1 feet, cased with concrete. MP 1.18 feet above lsd and 3,034.1 feet above msl. Highest water level 17.59 below lsd, Mar. 3, 1965; lowest 22.18 below lsd, Oct. 4, 1960. Records available: 1957-66.

Sept. 6, 1957	20.83	Apr. 13, 1960	19.84
Oct. 11	20.48	June 1	22.04
Dec. 17	20.60	June 28	20.99
Mar. 18, 1958	20.63	July 28	20.59
June 6	20.73	Aug. 30	20.22
July 7	20.39	Oct. 4	22.18
Aug. 6	20.89	Jan. 11, 1961	20.19
Sept. 5	20.97	Feb. 28	20.28
Sept. 24	20.59	Apr. 5	20.38
Oct. 1	20.51	June 5, 1962	19.00
Feb. 4, 1959	20.64	Apr. 25, 1963	20.01
Apr. 30	18.57	July 25	21.14
June 2	18.99	Nov. 1	20.02
July 2	19.22	Apr. 1, 1964	20.18
Aug. 4	20.17	Aug. 12	18.56
Sept. 3	19.96	Nov. 10	18.55
Oct. 1	19.46	Mar. 3, 1965	17.59
Nov. 2	19.82	July 8	18.42
Dec. 10	19.57	Oct. 28	18.50
Feb. 3, 1960	20.41	Jan. 4, 1966	18.63

Date	Water level	Date	Water level
D-1-33-19da--Continued			
May 10, 1966	19.19	Mar. 27, 1967	18.76
Sept. 1	19.56	June 30	19.06
Dec. 29	18.67	July 27	20.19

D-1-33-24bc. Mrs. Henry Kray. Drilled irrigation water-table well in alluvium, diameter 4 inches, depth 28 feet, cased with pipe. MP top of pipe at lsd and 2,898 feet above msl. Highest water level 6.47 below lsd, Sept. 10, 1962; lowest 8.94 below lsd, Feb. 4, 1966. Records available: 1962-67.

June 5, 1962	7.19	July 8, 1965	8.25
Sept. 10	6.47	Oct. 28	8.46
Apr. 25, 1963	7.96	Feb. 4, 1966	8.94
July 25	8.00	May 10	7.80
Nov. 1	8.37	Sept. 1	7.91
Apr. 1, 1964	8.65	Dec. 29	8.70
Aug. 12	7.91	Mar. 27, 1967	8.39
Nov. 10	8.30	June 30	7.58
Mar. 3, 1965	8.29		

D-1-33-33ab. U. S. Geol. Survey. Drilled observation water-table well in alluvial fan deposits, diameter 4 inches, depth 37.5 feet, cased with pipe. MP top of pipe, 1.2 feet above lsd and 2,339.2 feet above msl. Highest water level 5.18 below lsd, June 12, 1958; lowest 12.47 below lsd, Mar. 27, 1967. Records available: 1958-67.

June 12, 1958	5.18	Feb. 28, 1961	7.52
July 7	5.50	Mar. 27	7.25
Aug. 6	6.24	Apr. 4	7.04
Sept. 5	6.61	June 5, 1962	5.53
Sept. 30	6.80	Sept. 10	8.59
Feb. 4, 1959	5.96	Apr. 25, 1963	8.57
Apr. 30	5.69	July 25	8.80
June 2	6.15	Nov. 1	8.83
July 1	6.59	Apr. 1, 1964	8.11
Aug. 4	7.12	Aug. 12	9.04
Sept. 3	7.18	Nov. 10	8.41
Oct. 1	7.23	Mar. 3, 1965	7.03
Nov. 2	6.83	July 8	8.11
Dec. 10	7.11	Oct. 28	10.34
Feb. 3, 1960	7.15	Feb. 4, 1966	11.10
Apr. 15	6.74	May 10	10.19
June 1	6.80	Sept. 1	12.04
June 28	6.88	Dec. 29	12.28
July 28	9.01	Mar. 27, 1967	12.47
Aug. 30	7.20	June 30	11.58
Oct. 3	7.07		
Jan. 10, 1961	7.39		

D-2-33-9dd. Owner unknown. Drilled unused water-table well in alluvium, diameter 3 inches, depth 20 feet, steel casing. MP top of pump, 3.5 feet above lsd until May 10, 1966; 1.2 feet above lsd, Sept. 1, 1966 to present and 2,935.5 feet above msl. Highest water level 2.24 below lsd, June 5, 1958; lowest 8.93 below lsd, Apr. 25, 1963. Records available: 1956-67.

Sept. 7, 1956	3.78	Aug. 5, 1958	4.38
Dec. 18	6.45	Sept. 3	4.05
Mar. 28, 1957	6.88	Oct. 2	4.88
June 4	3.63	Feb. 4, 1959	6.79
July 9	4.70	Apr. 29	5.53
Aug. 7	4.02	June 1	4.45
Mar. 18, 1958	7.10	July 1	4.15
June 5	2.24	Aug. 4	3.47
July 2	3.71	Sept. 3	3.13

Date	Water level	Date	Water level
D-2-33-9dd--Continued			
Oct. 2, 1959	3.94	July 25, 1963	4.29
Nov. 2	4.99	Nov. 1	6.13
Dec. 10	5.16	Apr. 1, 1964	7.91
Feb. 3, 1960	6.69	Aug. 12	4.42
Apr. 15	5.81	Nov. 10	8.31
June 1	3.29	Mar. 3, 1965	6.23
June 28	4.35	July 8	6.51
July 28	3.04	Oct. 28	5.02
Aug. 30	3.80	Feb. 4, 1966	7.16
Oct. 3	4.69	May 10	4.48
Jan. 10, 1961	6.49	Sept. 1	2.94
Feb. 27	5.35	Dec. 29	6.41
Apr. 4	5.21	Mar. 27, 1967	6.96
Sept. 10, 1962	4.58	June 30	4.58
Apr. 25, 1963	8.93		

D-3-33-9dc. U. S. Geol. Survey. Drilled observation water-table well in terrace deposits, diameter 6 inches, depth 74 feet, cased with pipe. MP top of pipe, 0.3 foot above lsd and 3,024 feet above msl. Highest water level 41.02 below lsd, Sept. 22, 1966; lowest 43.52 below lsd, Apr. 29, 1966. Records available: 1966-67.

Apr. 29, 1966	43.52	Dec. 13, 1966	41.64
May 4	43.15	Jan. 20, 1967	41.63
June 10	42.45	Feb. 17	42.52
July 7	41.94	Mar. 17	42.83
Aug. 25	41.09	Apr. 10	42.80
Sept. 22	41.02		
Oct. 31	41.45		

D-4-32-23ac. U. S. Bureau of Indian Affairs. Drilled unused water-table well in terrace deposits, diameter 6 inches, depth 31.2 feet. MP top of casing, which is 0.3 foot above lsd and 3,056 feet above msl. Highest water level 11.70 below lsd, Sept. 3, 1958; lowest 17.60 below lsd, July 9, 1957. Records available: 1957-67.

June 5, 1957	17.40	Apr. 4, 1961	16.56
July 9	17.60	Sept. 10, 1962	15.30
Aug. 7	14.10	Apr. 25, 1963	15.68
Dec. 16	15.63	July 25	15.74
Mar. 17, 1958	16.88	Nov. 1	16.30
June 5	13.97	Apr. 1, 1964	15.54
July 2	14.89	Aug. 12	14.57
Aug. 5	11.90	Nov. 10	14.52
Sept. 3	11.70	Mar. 3, 1965	14.67
Oct. 2	13.56	July 8	15.00
Feb. 3, 1959	16.34	Oct. 4	14.47
Apr. 29	16.90	Nov. 30	16.80
June 1	17.03	Jan. 11, 1966	16.70
July 1	16.19	Feb. 10	16.70
Aug. 4	13.75	Mar. 15	16.73
Sept. 3	12.67	Apr. 5	17.58
Oct. 1	12.35	May 3	17.32
Nov. 2	13.54	July 8	16.15
Dec. 10	15.21	Aug. 25	14.79
Feb. 3, 1960	16.16	Sept. 22	14.72
Apr. 13	16.86	Nov. 1	14.93
June 1	16.00	Dec. 19	15.55
June 28	14.06	Jan. 19, 1967	15.89
July 28	12.33	Feb. 16	16.23
Aug. 29	12.28	Mar. 17	16.56
Oct. 4	13.02	Apr. 10	16.79
Jan. 10, 1961	15.69		
Feb. 27	16.26		

Date	Water level	Date	Water level
<u>Blaine County</u>			
A-31-24-6bcl. C. Bear estate. Drilled observation water-table well in alluvium, diameter 6 5/8 inches, depth 69.7 feet, steel casing. MP top of casing, 2.3 feet above lsd and 2,330.47 feet above msl. Highest water level 5.10 below lsd, Aug. 29, 1960; lowest 9.98 below lsd, Apr. 14, 1961. Records available: 1960-62, 1966-67.			
June 29, 1960	9.82	June 30, 1961	7.10
July 8	8.23	July 21	6.70
July 16	7.38	Oct. 25	8.65
Aug. 29	5.10	Apr. 18, 1962	9.81
Sept. 18	7.88	Sept. 19	8.15
Apr. 12, 1961	9.86	May 25, 1966	6.49
Apr. 13	9.86	Sept. 13	6.94
Apr. 14	9.98	Mar. 23, 1967	8.74
Apr. 20	9.92	June 23	5.18
Apr. 22	8.80	Aug. 29	6.23
May 12	8.53		

A-35-24-9ca. J. Billmeyer. Drilled irrigation water-table well in Flaxville Formation, diameter 16 inches, depth 52 feet, cased with corrugated culvert. MP at lsd. Records available: 1966-67

May 25, 1966	29.81	June 23, 1967	38.23
Sept. 14, 1966	29.82	Aug. 29	29.86

#### Chouteau County

A-29-13-21aa2. U. S. Geol. Survey. Drilled unused artesian well in deposits of Pleistocene age, diameter 2 inches, depth 210 feet, cased to 167 feet. MP top of pipe, 0.40 foot above lsd. Highest water level 15.78 below lsd, May 17, 1949; lowest 26.04 below lsd, Oct. 2, 1963. Records available: 1947-67.

Feb. 2, 1961	17.49	Dec. 3, 1963	18.81
Mar. 2	17.40	Dec. 30	18.88
Mar. 30	17.33	Jan. 30, 1964	18.46
Apr. 12	17.57	Feb. 26	18.52
Apr. 26	17.30	Mar. 30	18.44
June 1	18.87	May 2	25.37
June 5	23.65	May 27	25.58
June 14	18.63	June 21	18.89
Oct. 10	18.40	July 26	24.77
Feb. 3, 1962	17.49	Oct. 1	21.24
Mar. 7	17.42	Dec. 3	18.38
May 6	20.22	Jan. 9, 1965	18.32
June 14	19.28	Feb. 4	18.15
Aug. 8	24.60	Mar. 10	18.16
Sept. 5	24.52	Apr. 1	18.09
Oct. 6	25.80	Apr. 13	17.77
Nov. 3	19.71	Apr. 29	17.49
Dec. 1	18.52	May 27	17.29
Jan. 6, 1963	18.17	June 23	17.39
Feb. 2	18.02	July 27	23.23
Mar. 2	17.87	Aug. 26	23.62
Mar. 18	17.83	Sept. 30	24.99
Apr. 4	17.74	Oct. 26	18.85
May 2	24.88	Dec. 2	17.55
May 20	25.47	Dec. 30	17.43
May 24	25.53	Jan. 24, 1966	17.15
June 30	18.64	Feb. 21	17.13
Aug. 1	23.51	Mar. 31	16.98
Aug. 30	25.88	Apr. 29	24.75
Oct. 2	26.04	May 24	25.70
Nov. 2	20.84	June 23	17.76



Date	Water level	Date	Water level
A-29-13-21aa2--Continued			
July 25, 1966	25.19	Feb. 15, 1967	16.26
Sept. 1	25.76	Mar. 21	17.08
Sept. 26	26.38	Apr. 17	16.94
Oct. 25	26.53	May 13	16.79
Nov. 30	18.10	June 21	24.60
Dec. 19	17.78	July 23	24.50
Jan. 25, 1967	17.49	Aug. 31	25.32

Custer County

A-2-49-4ac. Owner unknown. Drilled stock water-table well in alluvium, diameter 4 inches, depth 37.5 feet, cased with pipe. MP top of pipe, 2.4 feet above lsd. Records available: 1967. Aug. 14, 1967, 13.52.

A-7-47-13dd. Owner unknown. Drilled unused water-table well in Fort Union Formation, diameter 4 inches, depth 46 feet until Aug. 18, 1967; diameter 1 1/4 inches, depth 50.1 feet, cased with pipe Aug. 18, 1967 to present. MP top of pipe, 0.30 foot above lsd until Aug. 18, 1967; 1.10 above lsd Aug. 18, 1967 to present. Highest water level 31.10 below lsd, Dec. 23, 1965; lowest 43.10 below lsd, June 6, 1947. Records available: 1947-67.

Jan. 5, 1961	38.57	June 25, 1964	36.68
Mar. 10	39.75	July 10	36.39
Apr. 10	40.15	Aug. 4	36.22
May 8	40.41	Sept. 1	36.06
June 9	38.70	Oct. 8	35.53
July 10	37.56	Nov. 4	35.41
Aug. 8	36.78	Dec. 4	35.96
Sept. 7	36.30	Jan. 6, 1965	36.15
Oct. 5	36.29	Feb. 3	34.76
Jan. 17, 1962	38.68	Mar. 9	31.98
Feb. 14	38.69	Apr. 2	36.94
Mar. 13	39.43	Apr. 5	37.15
Apr. 4	39.70	May 7	37.90
May 1	39.97	June 16	37.01
June 7	39.06	July 14	36.08
July 24	37.94	Sept. 7	35.00
Sept. 11	36.32	Nov. 1	35.99
Oct. 1	36.64	Dec. 7	36.00
Nov. 7	36.69	Dec. 23	31.10
Jan. 8, 1963	37.85	Jan. 21, 1966	36.63
Feb. 16	38.88	Feb. 17	36.70
Mar. 4	39.27	Mar. 16	36.82
Apr. 3	39.29	Apr. 6	37.28
May 8	39.36	June 3	36.53
June 7	38.00	July 13	35.63
July 1	37.54	Aug. 3	35.63
Aug. 7	36.37	Sept. 7	35.25
Sept. 17	35.81	Oct. 4	34.86
Nov. 5	35.42	Nov. 3	34.97
Jan. 20, 1964	37.00	Dec. 12	35.03
Feb. 5	37.09	Jan. 9, 1967	36.22
Mar. 4	37.60	Feb. 8	36.42
Apr. 8	38.34	Aug. 18	34.92
May 6	37.85	Sept. 7	34.74

A-7-50-8ba. L. J. Rolf. Drilled unused artesian well in Hell Creek Formation, diameter 4 inches, depth 700 feet, cased with pipe. MP top of casing at lsd and 2,944 feet above msl. Records available: 1965-67.

July 30, 1965	398.20	Aug. 15, 1967	396.65
Nov. 30, 1966	397.81		
June 20, 1967	396.36		

Date	Water level	Date	Water level
A-8-51-23dd. Glenn Lowry. Drilled domestic and stock water-table well in terrace deposits of the Powder River, diameter 4 inches, depth 54.3 feet, cased with pipe. MP top of casing, 0.30 foot above lsd. Records available: 1965-67.			
June 1, 1965	40.20	June 20, 1967	39.71
Sept. 27, 1966	40.83	Aug. 9	40.45
Mar. 27, 1967	39.99		

A-10-55-25dc. Bill Almy. Drilled stock artesian well in Fox Hills Sandstone and Hell Creek Formation, diameter 4 inches, depth 1,150 feet, steel casing. MP top of casing, 0.5 foot above lsd until Aug. 15, 1967; 1.30 feet above lsd, Aug. 15, 1967 until present. Elevation of lsd 2,609 feet above msl. Records available: 1962 and 1966-67.

Oct. 4, 1962	54.45	Mar. 22, 1967	61.15
May 2, 1966	58.82	Aug. 15	59.68
Sept. 13	(a)		
Nov. 16	58.84		

a pumping - unable to measure

Daniels County

A-35-47-12cd. State of Montana. Dug unused water-table well in deposits of Pleistocene age, diameter 48 inches, depth 31 feet, cribbed with wood and stone. MP top of plank cover, 1.50 feet above lsd. Highest water level 13.20 below lsd, July 28, 1953; lowest 16.24 below lsd, Jan. 2, 1964. Records available: 1947-67.

Jan. 5, 1961	15.06	Dec. 9, 1963	15.30
Feb. (j)		Jan. 2, 1964	16.24
Mar. 7	15.07	Feb. 5	15.34
Mar. 28	14.94	Mar. 12	15.38
Apr. 13	14.78	Apr. 13	15.05
May 2	14.77	June 4	14.67
May 23	14.68	July 14	14.33
June 5	14.67	Aug. 5	14.50
July 19	15.05	Sept. 18	14.96
Aug. 22	15.29	Nov. 3	15.16
Sept. 13	15.40	Dec. 9	15.17
Oct. 12	15.46	Jan. 8, 1965	15.29
Nov. 1	15.40	June 2	14.11
Jan. 3, 1962	15.53	July 21	14.20
Feb. 8	15.40	Aug. 12	14.48
Mar. 6	15.60	Oct. 5	14.55
Apr. 25	15.47	Dec. 15	14.73
May 8	15.43	Feb. 28, 1966	14.88
June 12	15.15	Mar. 30	14.84
July 25	15.06	Apr. 13	14.76
Aug. 21	15.11	May 3	14.61
Sept. 6	15.22	June 7	14.17
Oct. 2	15.31	July 5	14.23
Nov. 2	15.29	Aug. 8	14.40
Dec. 13	15.22	Sept. 6	14.58
Jan. 22, 1963	15.19	Oct. 25	14.79
Feb. 20	15.20	Nov. 9	14.73
Mar. 6	15.45	Dec. 29	15.62
May 8	15.11	Jan. 27, 1967	14.94
June 13	14.61	June 14	12.79
July 11	14.56	July 17	12.96
Sept. 9	15.05	Aug. 14	13.43
Oct. 17	15.16	Sept. 12	13.77
Nov. 13	15.28		

j ice in well



Date	Water level	Date	Water level
<u>Dawson County</u>			
A-15-58-26bb. Owner unknown. Drilled unused water-table well in alluvium, diameter 8 inches, depth 18.8 feet, cased with pipe. MP top of casing, 1.0 foot above lsd. Records available: 1966-67.			
May 24, 1966	5.05	Aug. 15, 1967	6.88
Nov. 17	7.94		
June 21, 1967	2.82		

A-18-56-25cb. Mrs. Bud Stevenson. Dug unused water-table well in terrace deposits, diameter 30 inches, depth 28 feet, cribbed with concrete. MP top of curb, 0.75 foot above lsd. Highest water level 22.25 below lsd, Jan. 4, 1966; lowest 26.37 below lsd, Sept. 27, 1960. Records available: 1947-66.

Jan. 5, 1961	25.93	Feb. 5, 1964	24.92
Feb. 7	24.95	Apr. 14	24.83
Mar. 8	25.01	May 5	24.85
Mar. 20	25.71	June 2	24.92
Apr. 11	25.01	Aug. 4	24.96
Apr. 25	25.04	Sept. 1	24.97
May 9	25.00	Oct. 5	25.03
May 31	25.03	Nov. 10	24.92
June 27	25.07	Dec. 8	25.86
July 26	25.06	Mar. 2, 1965	25.00
Aug. 15	25.10	Mar. 30	25.64
Sept. 12	24.98	June 2	23.77
Sept. 19	25.29	July 7	22.55
Oct. 2	25.46	Aug. 4	22.54
Nov. 7	25.09	Aug. 31	22.65
Jan. 23, 1962	25.06	Oct. 5	22.83
Feb. 19	25.20	Nov. 2	22.98
Mar. 21	25.38	Nov. 30	23.14
Apr. 17	25.05	Jan. 4, 1966	22.25
May 15	24.92	Feb. 1	23.31
June 12	24.86	Mar. 8	23.46
July 10	24.72	Apr. 12	23.55
Aug. 14	24.76	May 3	23.60
Sept. 12	25.10	June 6	24.05
Oct. 9	24.91	July 12	23.73
Nov. 6	24.70	Aug. 23	23.94
Dec. 4	24.71	Sept. 13	23.86
Jan. 3, 1963	24.84	Oct. 4	23.88
Feb. 5	25.09	Nov. 9	23.93
Feb. 7	25.20	Dec. 20	23.98
Mar. 4	24.85	Jan. 24, 1967	24.15
May 7	25.30	Feb. 7	24.58
June 4	24.83	Mar. 2	26.30
July 9	24.63	Mar. 24	24.36
Aug. 5	24.63	Apr. 4	24.90
Sept. 4	24.66	Apr. 20	24.12
Oct. 8	24.75	May 23	23.95
Nov. 13	25.12	June 27	23.72
Dec. 9	24.86	July 12	24.05
Jan. 14, 1964	25.55	Aug. 30	23.92

Deer Lodge County

B-4-10-10dc2. Village of Opportunity. Driven water-table well in alluvium, diameter 4 inches, depth 20.0 feet, steel casing. MP bottom of 6-inch outlet pipe, 1.30 feet above lsd and 4,980.1 feet above msl. Highest water level 3.50 below lsd, June 7, 1967; lowest 4.72 below lsd, March 9, 1967. Records available: 1960-67.

July 26, 1960	4.05	Jan. 31, 1961	4.59
Sept. 7	4.35	Mar. 7	4.46
Oct. 3	4.65	Apr. 4	4.38
Nov. 2	4.43	May 4	4.07
Dec. 6	4.42	June 8	3.57

Date	Water level	Date	Water level
<u>B-4-10-10dc2--Continued</u>			
June 28, 1961	3.86	Mar. 10, 1964	4.70
Aug. 1	4.38	Sept. 15	4.10
Aug. 29	4.39	Mar. 10, 1965	4.50
Oct. 3	4.22	Sept. 7	3.78
Nov. 2	4.25	Mar. 10, 1966	4.08
Dec. 5	4.38	Sept. 8	4.27
Mar. 6, 1962	4.68	Dec. 2	4.58
Sept. 5	4.10	Mar. 9, 1967	4.72
Mar. 6, 1963	4.45	June 7	3.50
Sept. 10	4.10		

B-4-10-36ab1. Lewis Wertz. Drilled water-table well, diameter 6 inches, depth 73.0 feet, steel casing. MP top of casing, 2.00 feet above lsd. Highest water level 43.50 below lsd, Dec. 2, 1966; lowest 54.60 below lsd, Aug. 1, 1961. Records available: 1960-67.

Aug. 3, 1960	48.97	Mar. 6, 1962	51.74
Sept. 7	46.95	Sept. 5	44.42
Oct. 4	45.90	Mar. 6, 1963	46.20
Nov. 2	45.10	Sept. 10	45.30
Dec. 6	44.93	Mar. 10, 1964	48.72
Jan. 31, 1961	46.47	Sept. 15	46.35
Mar. 7	48.20	Mar. 10, 1965	48.90
Apr. 4	49.48	Sept. 7	45.76
May 4	50.73	Mar. 10, 1966	46.52
June 8	52.24	Sept. 8	46.90
June 28	53.36	Dec. 2	43.50
Aug. 1	54.60	Mar. 9, 1967	47.20
Aug. 29	54.40	June 7	50.68
Oct. 3	53.29		
Nov. 2	51.24		

B-6-9-21cd1. Wallace Beck. Drilled domestic and stock artesian well in deposits of Tertiary age, diameter 6 inches, depth 150 feet, steel casing. MP top of well cap, 0.5 foot above lsd. Highest water level 89.50 below lsd, Sept. 8, 1966; lowest 92.28 below lsd, Mar. 6, 1962. Records available: 1960-67.

Sept. 12, 1960	90.75	Dec. 5, 1961	91.21
Oct. 4	90.69	Mar. 6, 1962	92.28
Nov. 2	90.58	Sept. 5	91.04
Dec. 6	90.97	Mar. 6, 1963	91.62
Jan. 31, 1961	90.87	Sept. 10	90.70
Mar. 7	91.10	Mar. 10, 1964	91.58
Apr. 4	91.35	Sept. 15	90.75
May 4	90.93	Mar. 10, 1965	91.00
June 8	90.95	Sept. 7	89.92
June 28	90.90	Mar. 10, 1966	90.64
Aug. 1	90.72	Sept. 8	89.50
Aug. 29	90.50	Mar. 9, 1967	90.58
Oct. 3	91.05	June 7	90.60
Nov. 2	90.87		

B-6-10-27cc. Mount Haggin Livestock Co. Drilled unused water-table well in deposits of Tertiary age, diameter 6 inches, depth 88.8 feet, steel casing. MP top of casing, 0.5 foot above lsd. Highest water level 36.70 below lsd, Sept. 7, 1965, lowest 65.05 below lsd, June 7, 1967. Records available: 1960-67.

June 21, 1960	60.38	Mar. 7, 1961	58.18
Aug. 1	45.20	Apr. 4	60.73
Sept. 6	40.79	May 4	62.52
Oct. 3	41.94	June 8	61.80
Nov. 2	44.28	June 28	55.32
Dec. 6	48.40	Aug. 1	46.43
Jan. 31, 1961	54.50	Aug. 29	43.43

Date	Water Level	Date	Water Level
B-6-10-27cc--Continued			
Oct. 3, 1961	46.45	Mar. 10, 1965	58.02
Nov. 2	50.07	Sept. 7	36.70
Dec. 5	53.99	Mar. 10, 1966	57.85
Mar. 6, 1962	62.10	Sept. 8	43.96
Sept. 5	45.40	Dec. 2	47.63
Mar. 6, 1963	61.70	Mar. 9, 1967	58.54
Sept. 10	40.40	June 7	65.05
Mar. 10, 1964	60.37		
Sept. 14	39.05		

Fallon County

A-3-60-2aa. Roy Crawford. Drilled unused water-table well in alluvium, diameter 5 inches, cased with pipe. MP top of casing, 0.60 foot above lsd. Highest water level 16.06 below lsd, June 20, 1967; lowest 23.80 below lsd, Sept. 12, 1966. Records available: 1965-67.

May 6, 1965	16.92	Mar. 20, 1967	17.53
May 23, 1966	17.00	June 20	16.06
Sept. 12	23.80	Aug. 15	23.58
Nov. 16	19.17		

A-7-59-2cd. H. Beckman. Dug unused artesian well in Fox Hills Sandstone and Hell Creek Formation, diameter 30 inches, depth 27 feet. MP top of culvert, 1.15 feet above lsd and 2,955 feet above msl. Highest water level 13.44 below lsd, May 27, 1965; lowest 24.33 below lsd, Nov. 21, 1962. Records available: 1962-67.

Oct. 11, 1962	24.09	Aug. 24, 1964	21.45
Nov. 21	24.33	Nov. 5	21.78
Dec. 14	23.41	Jan. 28, 1965	22.26
Mar. 25, 1963	23.62	Apr. 1	22.33
June 21	19.54	May 27	13.44
July 25	19.83	Nov. 17, 1966	20.15
Aug. 27	20.53	Mar. 21, 1967	20.03
Oct. 2	20.42	June 21	13.49
Mar. 18, 1964	21.65	Aug. 15	17.36
July 14	21.27		

A-10-58-18dc. Owner unknown. Drilled unused artesian well in Fox Hills Sandstone and Hell Creek Formation, diameter 4 inches, depth 166 feet. MP top of casing at lsd and 2,782 feet above msl until Aug. 15, 1967; hole in pump base 0.2 foot above lsd Aug. 15, 1967 to present. Highest water level 138.8 below lsd, Oct. 5, 1962; lowest 146.72 below lsd, Mar. 21, 1967. Records available: 1962-67.

Oct. 5, 1962	138.8	Apr. 1, 1965	143.69
Nov. 21	139.91	May 27	144.30
Mar. 25, 1963	140.59	Aug. 31	145.92
June 21	141.00	Oct. 27	146.05
July 25	141.56	Mar. 15, 1966	145.68
Aug. 27	141.84	July 6	146.58
Oct. 2	142.39	Sept. 13	145.35
Mar. 18, 1964	142.58	Nov. 17	144.73
July 14	143.17	Mar. 21, 1967	146.72
Aug. 24	144.00	June 21	145.13
Nov. 6	146.06	Aug. 15	146.18
Jan. 25, 1965	143.68		

A-10-58-32db1. Shell Oil Co. Drilled industrial artesian well in Fox Hills Sandstone and Hell Creek Formation, diameter 5 inches, depth 464 feet. MP top of casing, 0.3 foot above lsd and 2,912.3 feet above msl. Highest water level 208.11 below lsd, Aug. 15, 1967; lowest 217.17 below lsd, Nov. 21, 1962. Records available: 1962-67.

Sept. 25, 1962	215.7	Apr. 1, 1965	215.09
Nov. 21	217.17	May 27	214.66
Dec. 14	214.53	Aug. 31	215.86
Mar. 25, 1963	213.68	Oct. 27	215.84
June 21	214.68	Mar. 15, 1966	214.95
July 25	214.33	July 6	215.98
Aug. 27	215.30	Sept. 13	214.03
Oct. 2	215.48	Nov. 17	213.06
Mar. 18, 1964	215.70	Mar. 21, 1967	211.59
July 14	215.48	June 21	208.68
Aug. 24	216.01	Aug. 15	208.11
Nov. 6	217.14		
Jan. 28, 1965	216.94		

A-11-57-32bb. A. McNaney. Drilled domestic artesian well in Fox Hills Sandstone and Hell Creek Formation, diameter 4 inches to 160 feet, 2 inches from 160 feet on, depth 980 feet. MP top of culvert at lsd. Highest water level 37.5 below lsd, Feb. 2, 1963; lowest 86.82 below lsd, Sept. 13, 1966. Records available: 1963-67.

Feb. 2, 1963	37.5*	July 26, 1965	60.83**
Oct. 31	52.0*	Aug. 24	59.66**
Dec. 2	52.25*	Sept. 21	60.0**
Dec. 8	51.08**	Oct. 22	61.17**
Jan. 10, 1964	52.0**	Jan. 17, 1966	63.75**
Mar. 5	54.0*	Feb. 21	64.83**
May 5	55.5	Mar. 15	65.42**
May 26	56.58**	July 6	68.86
July 14	56.12	Sept. 13	86.82
Oct. 23	56.83**	Nov. 17	71.92
Feb. 5, 1965	56.58**	Mar. 21, 1967	70.33
Mar. 8	56.33**	June 21	69.68
Apr. 2	56.55	Aug. 15	69.54
May 28	57.42		
June 11	59.33**		

\* Measurements by owner

\*\* Measurements by Shell Oil Co.

Fergus County

A-14-16-15bb. J. J. Pospisil. Dug domestic water-table well in alluvium, diameter 4 feet, depth 39 feet, cribbed with concrete. MP top of curb at lsd. Highest water level 29.25 below lsd, June 30, 1967; lowest 37.52 below lsd, May 29, 1957. Records available: 1950-67.

Jan. 30, 1961	36.44	Feb. 26, 1962	35.77
Feb. 28	35.94	Mar. 28	34.18
Apr. 1	35.30	Apr. 25	34.84
Apr. 29	35.11	May 29	34.62
June 1	36.76	June 7	34.36
Aug. 1	35.44	June 27	32.10
Aug. 30	35.34	July 28	33.43
Sept. 28	35.76	Aug. 30	34.11
Nov. 1	35.27	Sept. 26	34.21
Jan. 31, 1962	35.50	Oct. 30	32.28

Date	Water level	Date	Water level
A-14-16-15bb--Continued			
Nov. 28, 1962	34.36	Apr. 28, 1965	32.17
Jan. 30, 1963	34.56	May 27	32.52
Feb. 26	34.11	June 30	33.08
Mar. 26	34.53	Aug. 25	32.48
Apr. 29	34.74	Sept. 28	32.98
May 29	34.77	Nov. 30	32.35
June 26	34.64	Jan. 27, 1966	34.02
July 29	34.35	Feb. 24	34.45
Aug. 27	34.24	Mar. 22	32.25
Sept. 27	34.13	Apr. 26	34.38
Oct. 29	34.60	May 24	34.60
Dec. 29	34.79	June 22	34.62
Jan. 29, 1964	34.79	July 19	34.70
Feb. 27	34.84	Aug. 24	35.77
Mar. 27	34.96	Oct. 11	34.84
Apr. 29	34.76	Nov. 9	34.89
May 26	34.01	Dec. 14	35.13
June 28	30.70	Mar. 3, 1967	35.01
Aug. 25	31.41	Mar. 28	34.56
Oct. 27	32.75	Apr. 2	34.06
Nov. 24	33.13	June 6	30.16
Dec. 29	33.36	June 30	29.25
Jan. 26, 1965	33.55	Aug. 1	30.19
Mar. 30	33.40	Aug. 24	30.94
Apr. 15	31.98		

A-16-17-19dc2. Spring Creek Hutterite Colony. Drilled unused artesian well in the Colorado Shale, diameter 4 inches, depth 255 feet, steel casing. MP top of casing, 0.7 foot above lsd. Highest water level 40.88 below lsd, July 30, 1967; lowest 43.17 below lsd, Mar. 6, 1967. Records available: 1966-67

Aug. 2, 1966	42.65	Mar. 6, 1967	43.17
Sept. 7	42.78	Mar. 30	42.65
Sept. 28	42.66	Apr. 30	42.29
Oct. 30	42.83	May 30	41.85
Nov. 29	43.08	June 30	41.48
Dec. 25	42.90	July 30	40.88
Jan. 30, 1967	42.91		

A-17-19-7bb1. The Milwaukee Railroad. Drilled unused artesian well in the Eagle Sandstone, diameter 8, 6, and 4 inches, depth 510 feet, steel casing to 366 feet 10 inches. MP top of 6-inch casing, 1.8 feet above lsd. Highest water level 71.35 below lsd, June 21, 1967, lowest 72.63 below lsd, Nov. 28, 1966. Records available: 1966-67.

July 26, 1966	72.13	Mar. 30, 1967	71.67
Aug. 26	72.24	Apr. 28	71.58
Sept. 30	72.53	May 30	71.44
Oct. 28	72.63	June 21	71.35
Dec. 8	72.50	July 28	71.63
Jan. 9, 1967	72.58	Aug. 25	72.04
Jan. 30	72.38		
Feb. 27	72.33		

#### Flathead County

B-27-20-17cc. U. S. Geol. Survey. Bored observation water-table well in alluvium, diameter 1 1/2 inches, depth 9.6 feet, cased with pipe. MP top of casing, 1.5 feet above lsd and 2,896.64 feet above msl. Highest water level 1.82 below lsd, Mar. 1, 1965; lowest 5.75 below lsd, Aug. 8, 1949. Records available: 1928-44, 1946-49, 1963-67.

Oct. 1, 1963	4.80	Dec. 3, 1963	4.73
Nov. 5	4.67	Jan. 6, 1964	4.63

Date	Water level	Date	Water level
B-27-20-17cc--Continued			
Feb. 3, 1964	4.63	June 28, 1965	4.04
Mar. 3	4.37	Aug. 2	4.84
Apr. 1	3.87	Aug. 30	4.00
May 29	3.83	Sept. 28	3.42
July 1	3.97	Nov. 1	3.62
Aug. 3	4.28	Dec. 8	3.42
Oct. 1	4.30	Jan. 5, 1966	3.85
Nov. 2	4.18	Feb. 2	3.87
Nov. 30	4.20	Mar. 2	3.86
Jan. 4, 1965	3.82	Aug. 25	4.67
Feb. 3	3.53	Dec. 5	3.20
Mar. 1	1.82	Mar. 1, 1967	2.65
Apr. 5	2.50	June 8	3.84
May 3	2.82		
June 1	3.90		

B-28-21-3ab. U. S. Geol. Survey. Driven observation water-table well in alluvium, diameter 3/4 inch, depth 9.4 feet, cased with pipe. MP top of casing, 1.2 feet above lsd. Highest water level 0.70 above lsd, June 11, 1964; lowest 6.01 below lsd, Dec. 3, 1963. Records available: 1963-67.

Aug. 29, 1963	5.87	May 3, 1965	3.48
Oct. 1	5.94	June 1	3.54
Nov. 5	6.00	June 28	3.70
Dec. 3	6.01	Aug. 2	5.15
Jan. 6, 1964	4.96	Aug. 30	5.30
Feb. 3	5.02	Sept. 28	5.28
Mar. 3	5.80	Nov. 1	5.16
Apr. 1	5.52	Dec. 8	5.06
May 29	3.56	Jan. 5, 1966	4.96
June 11	+0.70	Feb. 2	5.46
July 1	4.85	Mar. 2	5.89
Aug. 3	4.20	Apr. 6	5.44
Oct. 1	5.40	May 2	5.12
Nov. 2	5.36	Aug. 25	5.80
Nov. 30	5.29	Dec. 5	5.40
Jan. 4, 1965	5.00	Mar. 1, 1967	5.80
Feb. 3	4.70	June 8	3.26
Mar. 1	4.44		
Apr. 5	4.68		

B-29-20-18aal. William Anderson. Dug unused water-table well in aeolian deposits, diameter 56 inches, depth 18.0 feet, concrete casing. MP top of 3/4-inch pipe, 0.70 foot below lsd. Highest water level 15.22 below lsd, June 1, 1965; lowest 17.38 below lsd, Apr. 1, 1964. Records available: 1963-66.

Oct. 1, 1963	16.72	May 3, 1965	15.26
Nov. 5	16.82	June 1	15.22
Dec. 3	16.94	June 28	15.23
Jan. 6, 1964	17.04	Aug. 2	15.28
Feb. 3	17.18	Aug. 30	15.39
Mar. 3	17.28	Sept. 28	15.48
Apr. 1	17.38	Nov. 1	15.60
May 29	16.56	Dec. 8	15.78
July 1	16.43	Jan. 5, 1966	15.88
Aug. 3	16.27	Feb. 2	15.98
Oct. 1	16.30	Mar. 2	16.08
Nov. 2	16.42	Apr. 6	15.40
Nov. 30	16.56	Aug. 25	15.45
Jan. 4, 1965	16.48	Dec. 5	15.95
Feb. 3	16.48	Mar. 1, 1967	15.50
Mar. 1	15.93	June 8	15.38
Apr. 5	15.27		

**B-29-20-29bd. John Byrne. Drilled unused artesian well in glacial deposits, diameter 5 inches, depth 151.5 feet, cased with pipe. MP top of recorder floor, 2.5 feet above lsd. Highest water level 20.86 below lsd, June 25, 1965; lowest 27.02 below lsd, Apr. 7, 1964. Records available: 1963-67.**

Date	Water level	Date	Water level
Sept. 17, 1963	24.56	Aug. 3, 1965	21.21
Oct. 19	25.00	Sept. 1	21.47
Nov. 5	25.15	Sept. 1	21.79
Dec. 1	25.74	Oct. 1	21.79
Jan. 1, 1964	25.56	Nov. 1	22.14
Feb. 1	25.78	Dec. 1	22.62
Mar. 1	26.11	Jan. 1, 1966	22.67
Apr. 1	26.68	Feb. 1	22.87
Apr. 7	27.02	Mar. 1	23.35
May 1	26.76	Apr. 1	23.70
June 1	25.50	Apr. 25	23.63
July 1	23.23	Aug. 25	23.63
Aug. 1	23.19	Oct. 1	22.70
Sept. 1	23.56	Nov. 7	22.84
Oct. 1	23.77	Dec. 1	23.07
Nov. 1	23.90	Jan. 1, 1967	23.29
Dec. 1	24.07	Feb. 1	23.49
Jan. 4, 1965	24.08	Mar. 1	23.62
Feb. 1	23.93	Apr. 1	23.72
Mar. 1	23.97	May 1	23.77
Apr. 6	23.50	May 16	24.29
May 1	23.18	June 1	23.83
June 1	21.76	June 27	21.99
June 25	20.86	July 1	22.58
July 1	20.97	July 21	23.40

**B-29-21-17ccl. James Murphey. Dug stock water-table well in aeolian deposits, diameter 56 inches, depth 6.8 feet, concrete casing. MP top of concrete, 2.0 feet above lsd. Highest water level 1.81 below lsd, Apr. 20, 1965; lowest 4.02 below lsd, Nov. 20, 1964. Records available: 1964-67.**

Date	Water level	Date	Water level
May 18, 1964	3.00	July 1, 1965	2.73
June 1	3.25	Aug. 1	3.32
July 1	3.18	Sept. 1	3.08
Aug. 1	3.56	Oct. 1	3.07
Sept. 1	3.82	Nov. 2	3.23
Oct. 1	3.94	Dec. 1	3.21
Nov. 1	3.96	Jan. 6, 1966	3.26
Nov. 20	4.02	Feb. 1	3.32
Dec. 1	3.73	Mar. 3	3.34
Jan. 5, 1965	3.68	Apr. 1	2.00
Feb. 4	3.61	Aug. 25	3.50
Mar. 2	3.24	Dec. 1	3.40
Apr. 1	2.23	Mar. 1, 1967	2.37
Apr. 20	1.81	June 8	2.56
May 1	2.08		
June 1	2.60		

**B-29-21-20cc. Lutheran Cemetery. Drilled irrigation artesian well in glacial deposits, diameter 6 inches, depth 278 feet, cased with pipe. MP top of casing, 5.0 feet below lsd. Highest water level 100.00 below lsd, July 1, 1964 and June 28, 1965; lowest 102.07 below lsd, Apr. 1, 1964. Records available: 1963-67.**

Date	Water level	Date	Water level
Oct. 1, 1963	101.53	May 29, 1964	100.95
Nov. 5	101.58	July 1	100.00
Dec. 3	101.90	Aug. 3	101.08
Jan. 6, 1964	101.60	Oct. 1	101.57
Feb. 3	101.75	Nov. 2	101.55
Mar. 3	101.93	Nov. 30	101.44
Apr. 1	102.07	Jan. 4, 1965	101.54

**B-29-21-20cc--Continued**

Date	Water level	Date	Water level
Feb. 3, 1965	101.58	Dec. 8, 1965	101.10
Mar. 1	101.73	Jan. 5, 1966	101.10
Apr. 5	101.50	Feb. 2	101.44
May 3	100.80	Mar. 2	101.70
June 1	100.30	Aug. 25	101.40
June 28	100.00	Dec. 5	101.03
Aug. 2	100.80	Mar. 1, 1967	101.67
Aug. 30	100.90	June 8	100.18
Sept. 28	100.94		
Nov. 1	101.07		

**B-29-21-33cc. U. S. Geol. Survey. Driven observation well in alluvium, diameter 3/4 inch, depth 9.4 feet, cased with pipe. MP top of casing, 1.2 feet above lsd. Highest water level 0.62 above lsd, June 10, 1964; lowest 8.56 below lsd, Sept. 28, 1965. Records available: 1963-67.**

Date	Water level	Date	Water level
Aug. 29, 1963	6.90	Apr. 5, 1965	6.22
Oct. 1	7.00	May 3	4.92
Nov. 5	7.04	June 1	4.32
Dec. 3	7.14	June 28	3.73
Jan. 6, 1964	7.02	Aug. 2	6.02
Feb. 3	6.98	Aug. 30	6.40
Mar. 3	7.08	Sept. 28	8.56
Apr. 1	6.85	Nov. 1	6.74
May 29	4.72	Dec. 8	6.83
June 10	+0.62	Jan. 5, 1966	6.88
July 1	3.12	Feb. 2	6.93
Aug. 3	5.76	Apr. 6	6.50
Oct. 1	6.76	May 2	6.13
Nov. 2	6.75	Aug. 25	6.87
Nov. 30	6.70	Dec. 5	6.70
Jan. 4, 1965	6.45	Mar. 1, 1967	6.82
Feb. 3	6.57	June 8	3.85
Mar. 1	6.13		

**B-29-22-8dd. Sparks School. Drilled unused water-table well in glacial deposits, diameter 7 inches, depth 70 feet, cased with pipe. MP top of casing, 1.0 foot above lsd. Highest water level 51.52 below lsd, July 8, 1965; lowest 57.97 below lsd, Mar. 3, 1965. Records available: 1964-67.**

Date	Water level	Date	Water level
Jan. 6, 1964	57.58	Aug. 1, 1965	51.81
Feb. 3	57.76	Sept. 1	52.44
Apr. 1	57.96	Oct. 1	53.10
May 29	56.93	Nov. 2	53.85
July 1	56.10	Dec. 1	54.53
Aug. 1	56.49	Jan. 1, 1966	55.08
Sept. 22	56.80	Feb. 1	55.42
Oct. 1	56.90	Mar. 1	55.83
Nov. 1	57.30	Mar. 28	56.20
Dec. 1	57.69	Apr. 7	56.04
Mar. 3, 1965	57.97	Aug. 25	54.11
Apr. 6	56.54	Dec. 5	55.48
May 1	55.32	Mar. 1, 1967	55.75
June 1	52.51	June 8	54.47
July 8	51.52		

**Gallatin County**

**A-1-4-25dc. U. S. Geol. Survey. Drilled observation water-table well in alluvium, diameter 6 inches, depth 101 feet, cased with pipe. MP top of pipe, 1.5 feet above lsd until Feb. 6, 1963; 3.0 feet above lsd after Feb. 6, 1963. Highest water level 5.92 below lsd, Aug. 6, 1952; lowest 15.90 below lsd, Apr. 16, 1964. Records available: 1951-54 and 1963-67.**

Date	Water level	Date	Water level
A-1-4-25dc--Continued			
Dec. 7, 1951	10.57	Nov. 9, 1963	10.32
Jan. 1, 1952	11.86	Dec. 11	11.82
Feb. 1	13.33	Jan. 4, 1964	12.82
Mar. 1	14.34	Feb. 1	13.95
Mar. 27	15.11	Mar. 10	14.60
Apr. 1	14.79	Mar. 28	14.97
May 1	13.88	Apr. 29	14.97
June 2	11.89	June 4	12.75
July 1	7.80	June 28	10.15
Aug. 1	6.84	Aug. 29	8.10
Aug. 6	5.92	Oct. 3	8.82
Sept. 1	7.77	Oct. 31	9.87
Oct. 1	8.00	Jan. 8, 1965	12.94
Nov. 1	8.49	Feb. 4	14.03
Dec. 1	9.56	Mar. 6	14.93
Jan. 1, 1953	11.31	Apr. 16	15.90
Feb. 1	12.63	May 30	13.31
Mar. 1	13.87	July 2	10.42
Apr. 1	14.73	Aug. 1	8.01
Apr. 24	15.27	Aug. 23	7.57
May 1	15.06	Sept. 4	8.88
June 1	11.69	Oct. 2	9.10
July 3	8.56	Oct. 30	9.55
Aug. 18	6.48	Dec. 3	10.00
Sept. 1	7.45	Jan. 5, 1966	12.09
Oct. 1	8.22	Feb. 1	13.46
Nov. 1	8.41	Mar. 4	14.76
Dec. 1	9.19	Apr. 2	15.39
Jan. 1, 1954	11.08	May 4	15.09
Feb. 1	12.64	June 11	9.75
Mar. 1	13.60	July 2	7.62
Apr. 1	14.64	Sept. 3	8.57
Apr. 17	14.73	Oct. 3	9.25
Feb. 6, 1963	11.90	Dec. 14	12.43
Mar. 7	14.50	Feb. 10, 1967	10.36
Apr. 10	14.30	Apr. 6	16.05
May 5	14.60	June 24	10.03
June 19	10.60	Aug. 5	7.98
July 15	7.85		
Oct. 11	10.20		

D-1-4-25aa. U. S. Geol. Survey. Drilled observation water-table well in alluvium, diameter 6 inches, depth 50.5 feet, cased with pipe. MP top of pipe, 0.6 foot above lsd. Highest water level 2.6 below lsd, July 2, 1966; lowest 19.89 below lsd, Apr. 6, 1967. Records available: 1953-58 and 1963-67.

Mar. 7, 1953	15.97	Apr. 1, 1955	17.90*
Apr. 1	17.44	May 5	17.90*
Apr. 17	18.01	June 1	13.35*
May 1	16.15	July 5	10.15*
June 1	11.65	Aug. 5	7.45*
July 1	8.20	Oct. 25	8.35*
July 24	4.14	Dec. 1	10.85*
Aug. 7	6.08	Jan. 10, 1956	11.45*
Sept. 1	8.38	Feb. 1	12.70*
Oct. 1	9.79	Mar. 5	13.75*
Nov. 5	10.48	Apr. 5	14.75*
Dec. 1	11.91	May 1	10.90*
Jan. 1, 1954	13.53	July 5	8.65*
Feb. 1	15.37	Aug. 5	4.10*
Mar. 1	16.44	Sept. 5	5.65*
Apr. 5	18.96	Oct. 1	8.90*
July 10	10.45*	Oct. 25	10.15*
Nov. 15	10.75*	Dec. 5	11.20*
Dec. 5	10.95*	Jan. 25, 1957	13.00*
Jan. 1, 1955	11.50*	May 10	14.60*
Feb. 1	13.90*	July 25	8.70*
Mar. 5	16.80*	Sept. 5	6.20*

Date	Water level	Date	Water level
D-1-4-25aa--Continued			
Oct. 20, 1957	9.55*	June 28, 1964	6.3
Dec. 10	11.20*	Aug. 29	3.8
Feb. 5, 1958	13.55*	Oct. 3	9.6
Feb. 25	16.15*	Oct. 31	11.5
Mar. 25	17.60*	Jan. 8, 1965	15.2
May 10	16.70*	Feb. 4	15.9
May 25	14.80*	Mar. 6	17.3
June 25	13.90*	Apr. 16	19.2
July 28	3.90*	May 30	13.6
Aug. 25	7.40*	July 2	5.4
Sept. 20	7.90*	Aug. 1	3.6
Oct. 30	10.00*	Sept. 4	7.9
Nov. 25	11.20*	Oct. 2	9.7
Dec. 20	11.95*	Oct. 30	10.9
Feb. 3, 1963	14.90	Dec. 3	12.3
Mar. 3	13.68	Jan. 5, 1966	14.5
Apr. 10	11.10	Feb. 1	15.3
May 3	10.09	Mar. 4	16.9
June 1	7.06	Apr. 2	17.9
July 12	3.27	May 4	17.1
Aug. 6	5.90	June 11	5.5
Oct.	10.55	July 2	2.6
Nov. 9	11.40	Sept. 3	4.9
Dec. 11	13.30	Oct. 3	9.41
Jan. 4, 1964	14.6	Dec. 9	13.72
Feb. 1	14.1	Feb. 10, 1967	16.92
Mar. 10	15.9	Apr. 6	19.89
Mar. 28	19.2	June 24	9.69
Apr. 29	16.3	Aug. 5	3.54
June 4	11.9		

\* Measurement taken from hydrograph

D-2-4-13cc. Owner unknown. Dug observation water-table well in alluvium, diameter 12 inches, depth 11 feet, cased with tile. MP top of casing 0.5 foot above lsd. Highest water level 2.54 below lsd, June 27, 1952; lowest 10.37 below lsd, Feb. 28, 1963. Records available: 1947-67.

Feb. 3, 1961	9.69	Feb. 26, 1964	8.93
Apr. 3	9.89	Mar. 27	9.14
June 8	5.82	Apr. 28	8.84
July 22	5.73	June 4	7.96
Sept. 1	5.50	July 21	5.47
Oct. 12	6.24	Aug. 26	4.36
Nov. 15	8.05	Oct. 7	7.25
Dec. 19	8.80	Nov. 18	8.71
Jan. 30, 1962	9.69	Dec. 31	9.22
Feb. 27	9.65	Jan. 27, 1965	9.27
Mar. 31	7.90	Feb. 24	9.43
Apr. 29	9.00	Mar. 27	9.80
May 31	8.13	Apr. 28	9.16
June 26	7.04	May 27	8.48
July 25	5.20	June 15	6.96
Sept. 5	5.00	July 13	4.27
Oct. 2	6.85	Aug. 17	3.35
Oct. 30	8.35	Sept. 27	3.89
Dec. 5	8.80	Oct. 26	7.03
Jan. 2, 1963	9.58	Dec. 2	8.21
Jan. 31	9.85	Dec. 3	8.3
Feb. 28	10.37	Jan. 3, 1966	8.36
Mar. 26	10.08	Jan. 5	8.60
Apr. 25	9.42	Feb. 1	8.80
May 24	8.87	Feb. 4	8.71
June 23	6.58	Feb. 23	8.93
July 23	4.23	Mar. 4	8.9
Aug. 27	4.46	Mar. 28	9.07
Oct. 9	6.81	Apr. 2	9.1
Nov. 22	7.47	May 4	10.0
Jan. 5, 1964	8.34	May 24	8.00
Jan. 29	8.64	June 20	5.61

Date	Water level	Date	Water level
D-2-4-13cc--Continued			
July 26, 1966	5.27	Feb. 10, 1967	9.11
Sept. 3	5.8	Apr. 6	8.24
Oct. 5	6.48	May 3	9.25
Oct. 25	6.43	May 27	7.98
Nov. 21	7.63	June 14	5.62
Dec. 9	8.48	June 24	5.39
Dec. 14	8.48	June 27	5.22
Dec. 28	8.59	Aug. 5	3.88
Jan. 29, 1967	8.89		

D-2-5-22cc. U. S. Geol. Survey. Drilled observation artesian well in alluvial fan deposits, diameter 6 inches, depth 165.0 feet, cased with pipe. Perforated from 90 to 165 feet. MP top of pipe, 2.2 feet above lsd and 4,994 feet above msl until Jan. 4, 1964; 0.9 feet above lsd Jan. 4, 1964 to present. Highest water level 6.35 below lsd, June 20, 1953; lowest 13.4 below lsd, Mar. 30, 1958. Records available: 1953-58 and 1963-67.

Mar. 9, 1953	10.78	Sept. 20, 1958	10.5*
Mar. 31	9.22	Oct. 30	11.0*
Apr. 12	9.23	Nov. 25	12.0*
May 17	10.62	Dec. 30	11.2*
June 20	6.35	Feb. 4, 1963	12.55
July 4	8.66	Mar. 3	12.80
Aug. 13	9.32	Apr. 10	7.90
Sept. 10	10.49	May 3	7.80
Oct. 10	9.96	June 1	7.42
Nov. 21	10.71	July 6	9.70
Dec. 10	10.74	Aug. 5	7.96
Jan. 28, 1954	11.25	Oct. 11	9.45
Feb. 15	10.23	Nov. 9	9.80
Mar. 15	10.62	Dec. 11	10.10
Apr. 10	9.91	Jan. 4, 1964	11.2
Nov. 2	11.8*	Feb. 1	9.7
Dec. 2	12.5*	Mar. 10	11.5
Dec. 30	12.6*	Apr. 29	8.8
Jan. 30, 1955	12.8*	June 4	9.3
Mar. 1	12.7*	June 28	9.4
Mar. 30	12.5*	Aug. 29	8.7
May 1	12.6*	Oct. 3	10.6
May 30	9.2*	Oct. 31	10.5
July 7	10.2*	Jan. 8, 1965	11.0
Oct. 30	11.1*	Feb. 4	10.8
Nov. 30	11.5*	Mar. 6	11.1
Jan. 1, 1956	11.1*	Apr. 16	10.0
Feb. 1	11.4*	May 30	9.3
Mar. 1	12.0*	July 2	9.2
Apr. 1	12.0*	Aug. 1	9.0
Apr. 30	10.3*	Sept. 4	10.7
July 5	10.8*	Oct. 2	10.5
Aug. 1	8.9*	Oct. 30	11.2
Sept. 1	9.0*	Dec. 3	10.8
Oct. 1	11.3*	Jan. 5, 1966	11.6
Oct. 30	11.6*	Feb. 1	11.3
Dec. 1	12.5*	Mar. 4	11.4
Jan. 15, 1957	12.5*	Apr. 2	9.6
Mar. 15	13.0*	May 4	10.7
May 1	10.3*	June 11	9.0
July 15	8.6*	July 2	9.1
Sept. 1	9.7*	Sept. 3	10.6
Oct. 30	11.7*	Oct. 3	10.11
Dec. 5	11.6*	Dec. 9	10.96
Feb. 1, 1958	12.1*	Dec. 14	10.96
Feb. 28	13.0*	Feb. 10, 1967	10.89
Mar. 30	13.4*	Apr. 6	8.68
May 5	9.5*	June 24	9.99
May 30	10.0*	Aug. 5	9.35
June 20	10.9*		
July 30	10.4*		

\* Measurement taken from hydrograph

D-3-4-11bd. Huntley Hargrove. Dug domestic water-table well in alluvium, diameter 12 inches, depth 18.5 feet, cased with tile. MP top of casing, 0.8 foot above lsd and 4,923 feet above msl until Feb. 1, 1964; at lsd, Feb. 1, 1964 to present. Highest water level 5.26 below lsd, June 24, 1967; lowest 17.63 below lsd, Dec. 4, 1966. Records available: 1952-54 and 1963-67.

Feb. 3, 1963	9.70	Mar. 6, 1965	14.5
Mar. 3	14.20	Apr. 16	14.8
Apr. 10	16.35	May 3	12.3
May 3	12.70	July 2	5.7
June 1	7.97	Aug. 1	8.8
July 5	9.72	Sept. 4	8.7
Aug. 6	11.55	Oct. 2	9.5
Oct. 11	13.35	Oct. 30	12.2
Nov. 9	14.20	Dec. 3	14.3
Dec. 11	15.30	Jan. 5, 1966	15.3
Jan. 4, 1964	15.30	Feb. 1	15.7
Feb. 1	16.0	Mar. 4	16.4
Mar. 10	16.0	Apr. 2	14.7
Mar. 28	15.6	May 4	16.7
Apr. 29	13.7	June 11	7.4
June 4	12.6	July 2	5.8
June 28	6.1	Sept. 3	13.0
Aug. 29	10.1	Oct. 3	13.19
Oct. 3	11.8	Dec. 4	17.63
Oct. 31	13.9	Apr. 6, 1967	15.37
Dec. 7	14.5	June 24	5.26
Jan. 8, 1965	15.1	Aug. 5	9.27
Feb. 4	14.3		

Garfield County

A-14-30-11bd. Bud Shaw. Dug unused water-table well in terrace deposits, diameter 5 feet, depth 10.5 feet, cribbed with rock. MP top of rock curb, 0.50 foot below lsd. Highest water level 0.73 below lsd, May 13, 1965; lowest 9.24 below lsd, Nov. 19, 1966. Records available: 1965-67.

May 13, 1965	0.73	May 9, 1967	9.18
June 11	4.95	June 6	8.54
May 26, 1966	7.50	Aug. 21	8.40
Sept. 14	8.21		
Nov. 19	9.24		

A-16-40-17ca. Owner unknown. Dug unused water-table well in alluvium, diameter 42 inches, depth 15.2 feet, cribbed with rock. MP top of plank cover, 0.30 foot above lsd. Highest water level 4.13 below lsd, May 14, 1965; lowest 7.90 below lsd, Aug. 28, 1967. Records available: 1965-67.

May 14, 1965	4.13	Mar. 22, 1967	5.86
May 24, 1966	6.04	June 22	4.92
Sept. 13	7.58	Aug. 28	7.90
Nov. 18	7.72		

A-18-40-1db. Garfield County School Board. Drilled unused artesian well in Fort Union Formation, diameter 4 inches, depth 158.5 feet, cased with steel pipe, finished with 30 feet of perforated pipe. MP top of casing, 0.90 foot above lsd. Highest water level 33.56 below lsd, May 16, 1965; lowest 34.01 below lsd, Aug. 28, 1967. Records available: 1965-67.

May 16, 1965	33.56	Mar. 22, 1967	33.80
June 11	33.72	June 22	33.67
May 24, 1966	33.85	Aug. 28	34.01
Sept. 13	33.69		
Nov. 18	33.96		



Date	Water level	Date	Water level
<u>Glacier County</u>			
B-32-11-3dd. Bureau of Indian Affairs. Dug unused water-table well in deposits of Pleistocene age, diameter 24 inches, depth 9 feet, corrugated culvert casing. MP top of concrete curb, 0.30 foot above lsd. Highest water level +0.10, May 31, 1967; lowest 3.69 below lsd, Sept. 12, 1960. Records available 1947-67.			
Jan. 27, 1961	2.00	Apr. 9, 1964	0.67
Jan. 31	2.85	Apr. 20	1.00
Mar. 29	1.04	Apr. 28	1.08
Apr. 17	1.51	May 15	1.41
Apr. 29	0.83	May 31	0.94
June 13	2.69	June 16	0.25
June 28	2.95	July 22	1.83
July 11	2.75	Aug. 1	2.97
Aug. 14	3.06	Sept. 14	2.80
Sept. 18	2.85	Sept. 30	2.70
Sept. 28	2.60	Oct. 29	2.42
Oct. 17	2.22	Nov. 16	2.69
Jan. 3, 1962	1.68	Dec. 1	2.76
Jan. 30	1.55	Dec. 31	3.32
Feb. 13	1.35	Jan. 11, 1965	3.42
Mar. 21	1.23	Feb. 25	1.24
Mar. 28	1.10	Mar. 29	1.77
Apr. 17	0.71	Apr. 10	0.41
Apr. 30	1.30	Apr. 28	0.64
May 15	0.62	May 25	1.37
May 29	1.81	June 1	1.67
July 3	2.57	June 16	0.30
July 11	2.77	June 27	0.77
Aug. 3	2.84	July 31	2.65
Aug. 15	3.28	Aug. 28	2.83
Aug. 31	3.45	Sept. 29	2.05
Sept. 10	3.17	Oct. 18	2.52
Oct. 4	3.09	Oct. 28	2.89
Nov. 1	2.88	Nov. 4	2.88
Nov. 13	3.10	Nov. 30	2.62
Nov. 30	2.95	Dec. 18	2.77
Dec. 28	3.18	Dec. 29	3.10
Jan. 18, 1963	2.05	Jan. 27, 1966	3.09
Jan. 30	2.29	Feb. 23	1.94
Feb. 5	1.19	Mar. 29	1.00
Feb. 26	0.97	Apr. 27	1.33
Feb. 28	1.01	May 16	1.54
Mar. 28	0.93	June 21	2.37
Apr. 15	1.45	July 7	2.35
Apr. 29	1.54	Aug. 30	2.98
May 25	2.32	Sept. 29	3.43
June 10	1.91	Nov. 27	3.09
June 27	2.45	Dec. 21	2.31
July 29	2.70	Jan. 11, 1967	2.91
Sept. 30	3.46	Jan. 19	1.73
Oct. 19	3.31	Feb. 13	2.42
Oct. 31	3.21	Mar. 28	1.66
Nov. 19	2.97	Apr. 25	0.11
Dec. 2	2.84	Apr. 26	0.17
Dec. 21	3.06	May 5	0.03
Dec. 27	2.79	May 15	0.44
Jan. 28, 1964	2.72	May 31	+0.10
Feb. 16	2.32	June 16	0.93
Feb. 28	2.14	July 26	2.61
Mar. 31	1.53	Aug. 14	3.10
Apr. 4	1.41	Sept. 13	3.50

B-33-6-6ab. Blackfeet Tribe. Drilled unused artesian well in Virgelle Sandstone, diameter 6 inches, depth 89 feet, cased with pipe. MP top of pipe, 0.4 foot above lsd, May 15, 1956 to Nov. 3, 1966; 1.6 feet above lsd and 3,905 feet above msl after Nov. 3, 1966. Highest water level 6.10 below lsd, May 31, 1967; lowest 10.15 below lsd, May 15, 1956. Records available: 1956-57 and 1966-67.

Date	Water level	Date	Water level
<u>B-33-6-6ab--Continued</u>			
May 15, 1956	10.15	May 28, 1957	8.40
May 16	9.74	Nov. 3, 1966	8.39
July 20	6.19	Feb. 10, 1967	9.36
Sept. 10	8.35	May 31	6.10
Oct. 9	8.88	Aug. 30	9.66
Mar. 20, 1957	9.58		
May 9	9.46		
B-33-6-16aa. Oil Field Lumber Co. Dug domestic and stock water-table well in deposits of Pleistocene age, diameter 24 inches, depth 18 feet, cased with wood. MP top of casing at lsd and 3,855 feet above msl. Highest water level 11.12 below lsd, Aug. 30, 1967; lowest 13.89 below lsd, May 30, 1957. Records available: 1957 and 1966-67.			
Mar. 20, 1957	13.36	Nov. 2, 1966	12.69
May 9	13.77	Feb. 10, 1967	13.58
May 30	13.89	May 31	11.63
July 15	12.47	Aug. 30	11.12
Nov. 14	12.97		
B-33-7-9cd. Don LaGrand. Dug unused water-table well in deposits of Pleistocene age, diameter 72 inches, depth 12.7 feet, cased with wood. MP top of casing at lsd and 3,993 feet above msl. Highest water level 7.11 below lsd, Aug. 30, 1967; lowest 10.02 below lsd, Nov. 13, 1957. Records available: 1956-57 and 1966-67.			
May 1, 1956	8.26	May 8, 1957	9.24
June 1	8.26	May 29	9.42
July 16	8.35	July 12	9.60
Aug. 6	8.58	Nov. 13	10.02
Sept. 8	8.03	Nov. 3, 1966	9.06
Oct. 3	8.33	Feb. 10, 1967	9.39
Nov. 14	8.83	May 31	5.09
Dec. 11	8.91	Aug. 30	7.11
Mar. 20, 1957	9.00		
<u>Hill County</u>			
A-32-15-17dd. U. S. Geol. Survey. Drilled unused artesian well in deposits of Pleistocene age, diameter 2 inches, depth 180 feet, cased to 152 feet. MP top of casing, 0.20 foot above lsd. Highest water level 39.92 below lsd, Feb. 4, 1965; lowest 52.56 below lsd, June 18, 1947. Records available: 1947-67.			
Feb. 2, 1961	41.13	May 2, 1963	41.24
Mar. 2	41.02	May 20	41.24
Mar. 30	41.03	May 24	41.27
Apr. 12	41.03	June 30	41.36
Apr. 26	41.02	Aug. 1	41.50
June 14	41.12	Aug. 30	41.75
Aug. 2	41.50	Oct. 2	41.99
Oct. 10	41.80	Nov. 2	42.24
Feb. 3, 1962	41.63	Dec. 3	41.49
Mar. 7	41.54	Dec. 30	42.28
May 5	41.37	Jan. 29, 1964	41.08
June 17	41.37	Feb. 27	41.81
Aug. 8	41.5	Mar. 30	41.88
Sept. 5	41.60	Apr. 30	41.67
Oct. 6	41.68	May 27	41.53
Nov. 3	41.70	June 21	40.91
Dec. 1	41.64	July 26	41.31
Jan. 6, 1963	41.62	Oct. 8	41.27
Feb. 2	41.54	Oct. 24	41.16
Mar. 2	41.34	Dec. 3	41.19
Mar. 16	41.33	Jan. 10, 1965	40.97
Apr. 4	41.29	Feb. 4	39.92

Date	Water level	Date	Water level
A-32-15-17dd--Continued			
Mar. 11, 1965	40.89	June 23, 1966	40.21
Mar. 31	40.68	July 26	40.32
Apr. 13	40.60	Aug. 31	40.63
Apr. 29	40.58	Sept. 27	40.80
May 27	40.46	Oct. 25	40.83
June 24	40.46	Nov. 30	40.80
July 29	40.42	Dec. 19	40.70
Aug. 26	40.54	Jan. 25, 1967	40.59
Sept. 30	40.56	Feb. 15	40.29
Oct. 27	40.75	Mar. 22	40.40
Dec. 2	40.52	Apr. 25	40.29
Dec. 30	40.45	May 13	40.02
Jan. 25, 1966	40.40	May 17	40.03
Feb. 21	40.30	June 21	40.11
Mar. 31	40.23	July 23	40.30
Apr. 29	40.20	Aug. 30	40.73
May 24	40.28		

Judith Basin County

A-16-12-7da2. M. A. Groskopf. Dug unused water-table well in alluvium, diameter 24 inches, depth 9.5 feet, cribbed with wood. MP top of cover, 0.1 foot above lsd and 4,304.92 feet above msl. Highest water level 4.23 below lsd, June 21, 1965; lowest 9.46 below lsd, Sept. 14, 1966. Records available: 1964-67.

Nov. 12, 1964	6.52	Sept. 7, 1965	7.58
Jan. 12, 1965	6.70	Jan. 11, 1966	6.50
Mar. 2	6.02	Sept. 14	9.46
Apr. 19	4.94	Dec. 5	7.40
May 17	4.77	Feb. 27, 1967	6.31
June 21	4.23	May 2	5.56
July 17	5.16	Aug. 8	7.30
		Sept. 22	7.76

Lake County

B-20-20-26cc. State of Montana. Drilled unused artesian well in deposits of Pleistocene age, diameter 6 inches, depth unknown, cased with pipe. MP top of casing, 1.4 feet above lsd. Records available: 1967. May 16, 1967, 160.00.

Lincoln County

B-37-27-33dc. Iowa Flats School. Drilled unused artesian well in deposits of Pleistocene age, diameter 6 inches, depth 300 feet, cased with pipe. MP top of recorder floor, 3.0 feet above lsd. Highest water level 52.19 below lsd, Oct. 18, 1966; lowest 62.75 below lsd, May 4, 1967. Records available: 1966-67.

Oct. 18, 1966	52.19	Apr. 4, 1967	61.94
Nov. 9	54.75	May 4	62.75
Dec. 7	57.58	June 6	60.37
Jan. 10, 1967	59.94	July 8	61.13
Feb. 7	60.97	Aug. 5	56.48
Mar. 6	61.62		

McCone County

A-19-48-11bc. City of Circle. Drilled unused water-table well in alluvium, diameter 12 inches, depth 53 feet, cased with steel. MP top of casing, 2.20 feet above lsd. Highest water level 27.25 below lsd, Oct. 11, 1954; lowest 32.42 below lsd, Jan. 22, 1962. Records available: 1954-67.

Date	Water level	Date	Water level
A-19-48-11bc--Continued			
Jan. 5, 1961	31.31	June 2, 1964	31.19
Feb. 2	31.30	July 6	30.25
Mar. 2	31.25	Aug. 4	30.56
Mar. 30	31.21	Sept. 1	30.92
Apr. 12	31.19	Oct. 6	31.09
Apr. 25	31.98	Nov. 10	31.18
May 17	31.22	Dec. 8	31.24
June 13	31.29	Jan. 5, 1965	31.17
July 18	31.55	Feb. 2	31.30
Aug. 15	31.70	Mar. 2	31.31
Oct. 31	31.49	Mar. 30	31.08
Nov. 14	31.48	May 5	30.29
Jan. 22, 1962	32.42	June 8	29.38
Feb. 19	31.36	July 15	30.34
Mar. 7	31.32	Aug. 5	30.71
Apr. 3	31.02	Aug. 31	30.91
Apr. 4	31.16	Oct. 11	31.10
May 15	31.22	Nov. 2	31.10
June 12	30.55	Nov. 30	31.14
July 10	30.89	Jan. 3, 1966	30.19
Aug. 14	30.76	Feb. 1	31.25
Sept. 12	31.06	Mar. 4	31.30
Oct. 9	31.16	Apr. 5	30.79
Nov. 6	31.21	Apr. 12	30.84
Dec. 4	31.23	May 5	30.50
Jan. 3, 1963	31.24	June 8	30.61
Feb. 7	31.58	July 6	30.84
Mar. 4	30.44	Aug. 23	31.18
Mar. 19	30.60	Sept. 13	31.27
Apr. 8	30.71	Oct. 4	31.20
May 8	30.68	Nov. 9	30.90
June 4	30.88	Dec. 21	30.61
July 9	30.27	Jan. 24, 1967	30.46
Aug. 8	30.78	Feb. 7	30.63
Sept. 8	31.03	Mar. 1	30.37
Oct. 8	31.17	Apr. 4	30.36
Nov. 13	31.18	Apr. 25	30.54
Dec. 10	31.24	May 23	30.51
Jan. 14, 1964	31.26	June 27	30.79
Feb. 5	31.26	July 24	31.06
Mar. 3	31.10	Aug. 30	31.34
Apr. 15	31.16		
May 4	31.08		

Madison County

C-4-6-27ba. U. S. Bureau of Reclamation. Drilled observation water-table well in terrace deposits of Tertiary age, diameter 1 1/4 inches, depth 131.5 feet, cased with pipe. MP top of pipe, 1.7 feet above lsd and 4,781 feet above msl. Highest water level 51.71 below lsd, Oct. 11, 1965; lowest 68.2 below lsd, Apr. 10, 1963. Records available: 1962-67.

Dec. 1962	56.3*	June 2, 1965	63.11
Jan. 15, 1963	57.3*	Aug. 8	57.70
Apr. 10	68.2*	Oct. 11	51.71
May 25	65.8*	Dec. 6	53.37
July 20	65.3*	Feb. 7, 1966	56.88
Sept. 12	61.8*	Apr. 7	59.64
Nov. 15	58.3*	June 6	61.06
Dec. 18	61.8*	Aug. 1	54.61
Mar. 15, 1964	64.6*	Oct. 6	49.28
May 18	66.7*	Dec. 8	50.60
July 18	63.8*	Feb. 6, 1967	55.20
Sept. 16	58.99	Apr. 3	59.99
Nov. 17	58.93	June 23	60.25
Jan. 13, 1965	61.94	Aug. 1	58.06
Apr. 10	65.88		

\* Measured by U. S. Bureau of Reclamation



C-5-6-17ca. U. S. Bureau of Reclamation. Drilled water-table observation well in terrace deposits of Tertiary age, diameter 1 1/4 inches, depth 310 feet. MP top of pipe, 1.8 feet above lsd and 5,082 feet above msl. Highest water level 77.5 below lsd, Dec. 1962; lowest 234.9 below lsd, Sept. 1964. Records available: 1962-67.

Date	Water level	Date	Water level
Dec. 1962	77.5*	Aug. 8, 1965	233.78
Jan. 1963	84.5*	Oct. 11	234.01
Apr.	92.6*	Dec. 6	233.93
June	234.5*	Feb. 7, 1966	233.40
July	234.6*	Apr. 7	233.82
Nov.	234.6*	June 6	233.78
Jan. 1964	234.8*	Aug. 1	233.77
Mar.	234.8*	Oct. 6	233.57
May	234.8*	Dec. 5	232.97
July	229.1*	Feb. 6, 1967	233.52
Sept.	234.9*	Apr. 3	233.54
Nov. 17	234.08	June 23	233.74
Jan. 13, 1965	234.13	Aug. 1	233.34
Apr. 10	233.52		
June 2	233.82		

\* Measured by U. S. Bureau of Reclamation

Missoula County

B-13-19-22bcl. Woolworth's. Drilled water-table well in alluvium, diameter 6 inches, depth 84 feet, cased with pipe. MP top of casing, 10.0 feet below lsd and 3,179 feet above msl. Highest water level 36.05 below lsd, June 20, 1964; lowest 52.89 below lsd, Mar. 19, 1962. Records available: 1962-66.

Date	Water level	Date	Water level
Jan. 3, 1962	52.19	Oct. 29, 1962	47.36
Feb. 1	52.12	Nov. 5	47.91
Mar. 5	52.69	Nov. 12	48.44
Mar. 12	52.84	Nov. 19	48.90
Mar. 19	52.89	Nov. 20	48.97
Mar. 20	52.86	Nov. 26	48.89
Mar. 26	52.53	Dec. 3	48.94
Apr. 4	51.15	Dec. 10	49.02
Apr. 9	49.63	Dec. 17	49.16
Apr. 16	49.35	Dec. 20	49.25
Apr. 20	48.35	Dec. 24	49.34
Apr. 23	46.90	Jan. 20, 1963	50.06
Apr. 30	45.09	Feb. 20	49.30
May 7	44.81	Mar. 20	49.01
May 14	43.15	Apr. 20	47.31
May 20	41.74	May 20	43.45
May 21	41.33	June 20	38.68
May 28	38.77	July 20	41.03
June 3	38.07	Aug. 20	42.85
June 11	38.71	Sept. 20	44.33
July 16	39.41	Oct. 20	46.23
July 20	39.75	Nov. 20	48.81
July 23	40.04	Dec. 20	50.17
July 30	40.26	Jan. 20, 1964	51.17
Aug. 6	40.51	Feb. 20	52.02
Aug. 13	41.21	Mar. 20	52.28
Aug. 20	41.61	Apr. 20	51.36
Aug. 27	42.13	May 20	45.35
Sept. 3	42.82	June 20	36.05
Sept. 10	43.43	July 20	39.20
Sept. 17	44.00	Aug. 20	41.85
Sept. 20	44.30	Dec. 28	49.45
Sept. 24	44.69	Jan. 25, 1965	49.73
Oct. 8	45.75	Feb. 23	50.00
Oct. 15	46.18	Mar. 22	50.10
Oct. 20	46.56	Apr. 24	46.85
Oct. 22	46.72	May 28	40.70

B-13-19-22bcl--Continued

Date	Water level	Date	Water level
June 25, 1965	37.20	Mar. 24, 1966	50.55
July 24	40.50	Apr. 21	47.95
Aug. 21	42.27	May 20	44.00
Sept. 25	44.56	Sept. 6	44.97
Oct. 22	46.20	Dec. 1	49.90
Nov. 22	48.28	Mar. 7, 1967	52.47
Dec. 20	49.56	May 20	54.00
Jan. 19, 1966	49.75	June 6	39.65
Feb. 21	50.90		

B-13-19-29dal. Montana Power Co. Drilled unused water-table well in deposits of Pleistocene age, diameter 10 inches, depth 84.4 feet, cased with pipe. MP top of pit curb at lsd and 3,182.9 feet above msl. Highest water level 37.42 below lsd, June 29, 1959; lowest 52.00 below lsd, Mar. 2, 1964. Records available: 1958-67.

Date	Water level	Date	Water level
Sept. 18, 1958	41.93	Jan. 8, 1962	49.85
Oct. 12	43.61	Jan. 29	50.38
Nov. 17	46.66	Feb. 5	50.36
Jan. 12, 1959	49.11	Mar. 1	49.76
Feb. 9	49.46	Apr. 9	48.95
Mar. 2	49.93	May 7	45.64
Mar. 23	49.65	June 11	39.86
Apr. 13	48.60	July 16	38.34
Apr. 27	47.71	Aug. 16	39.27
June 4	42.62	Oct. 8	43.38
June 29	37.42	Nov. 16	46.20
July 13	37.95	Dec. 14	47.17
Aug. 10	38.80	Jan. 2, 1963	47.66
Sept. 14	41.10	Feb. 4	48.80
Oct. 12	43.24	Mar. 11	47.40
Nov. 9	44.59	Apr. 8	46.70
Dec. 7	46.05	May 13	45.10
Jan. 3, 1960	47.09	June 3	40.13
Feb. 11	49.15	July 1	38.00
Mar. 17	50.09	July 30	39.57
Apr. 12	48.44	Sept. 4	40.84
May 9	47.15	Oct. 7	42.47
June 16	40.58	Nov. 1	44.82
July 4	39.23	Nov. 29	46.80
Aug. 8	39.81	Jan. 30, 1964	49.55
Sept. 12	42.16	Mar. 2	52.00
Oct. 10	43.91	Mar. 30	50.14
Nov. 14	46.43	Apr. 30	49.17
Dec. 12	48.66	June 1	42.85
Jan. 9, 1961	50.06	June 29	37.60
Feb. 13	50.93	Sept. 18	41.42
Mar. 13	50.95	Mar. 4, 1965	47.90
Apr. 10	50.50	Sept. 2	40.43
May 1	50.01	Mar. 7, 1966	48.93
June 1	44.60	Sept. 6	42.30
July 3	39.04	Dec. 1	47.46
Aug. 3	40.20	Mar. 7, 1967	49.88
Oct. 9	44.43	June 6	41.45
Nov. 13	46.65		
Dec. 11	48.60		

B-13-19-30bd. Montana State Forest Nursery. Drilled irrigation water-table well in deposits of Pleistocene age, diameter 12 inches, depth 121.5 feet, cased with pipe. MP hole in casing, 0.2 foot above lsd and 3,157.9 feet above msl. Highest water level 21.05 below lsd, July 3, 1961; lowest 31.22 below lsd, Mar. 23, 1961. Records available: 1961-67.

Date	Water level	Date	Water level
Mar. 23, 1961	31.22	Aug. 31, 1961	22.67
July 3	21.05	Oct. 5	26.95
Aug. 3	22.10	Nov. 6	27.68

Date	Water level	Date	Water level
B-13-19-30bd--Continued			
Dec. 7, 1961	29.53	Sept. 4, 1963	23.07
Jan. 3, 1962	30.52	Oct. 7	24.90
Feb. 1	30.80	Nov. 1	26.96
Mar. 1	30.60	Nov. 29	28.80
Apr. 3	30.32	Jan. 2, 1964	30.05
May 2	27.45	Jan. 30	30.63
June 4	22.86	Mar. 2	30.92
July 31	21.07	Mar. 30	31.00
Aug. 28	23.50	Apr. 30	30.15
Oct. 1	25.42	June 29	21.07
Nov. 5	27.04	Sept. 18	24.18
Dec. 4	28.76	Mar. 4, 1965	29.24
Jan. 2, 1963	29.30	Sept. 2	24.00
Feb. 4	29.80	Mar. 7, 1966	30.15
Feb. 27	28.98	Sept. 6	24.40
Apr. 1	28.68	Dec. 1	29.08
May 1	27.92	Mar. 6, 1967	30.70
June 3	21.40	June 6	22.60
July 1	21.56		
July 30	21.99		

B-13-20-14ac. Bonneville Power Adm. Drilled water-table well in terrace deposits, diameter 6 inches, depth 35.5 feet, cased with pipe. MP top of casing, 1.30 feet above lsd and 3,146.3 feet above msl. Highest water level 8.68 below lsd, July 1, 1959; lowest 21.22 below lsd, May 15 and May 22, 1961. Records available: 1959-67.

Apr. 21, 1959	19.60	Dec. 7, 1959	16.43
Apr. 27	19.72	Dec. 14	16.76
May 1	19.76	Dec. 21	17.02
May 4	19.42	Dec. 29	17.33
May 11	18.88	Jan. 1, 1960	17.44
May 20	17.72	Jan. 4	17.54
May 25	18.09	Jan. 11	17.77
June 1	16.82	Jan. 18	18.01
June 8	14.42	Jan. 25	18.22
June 15	11.60	Feb. 1	18.43
June 22	9.00	Feb. 8	18.62
June 29	8.74	Feb. 15	18.82
July 1	8.68	Feb. 22	19.01
July 6	8.81	Feb. 29	19.20
July 13	9.27	Mar. 1	19.23
July 20	9.08	Mar. 7	19.40
July 27	9.40	Mar. 14	19.57
Aug. 1	9.33	Mar. 21	19.13
Aug. 3	8.77	Mar. 28	19.13
Aug. 10	8.92	Apr. 1	19.26
Aug. 17	9.36	Apr. 4	19.33
Aug. 24	8.86	Apr. 11	18.10
Aug. 31	9.51	Apr. 18	17.74
Sept. 1	9.78	Apr. 25	18.28
Sept. 7	10.52	May 1	18.50
Sept. 14	11.03	May 2	18.54
Sept. 21	11.09	May 9	18.33
Sept. 28	11.18	May 16	17.38
Oct. 1	11.19	May 23	17.96
Oct. 5	11.58	May 30	17.54
Oct. 12	12.80	June 1	17.35
Oct. 19	13.66	June 6	15.21
Oct. 26	14.46	June 13	14.16
Nov. 1	14.75	June 20	13.65
Nov. 2	14.79	June 27	13.02
Nov. 9	15.12	July 1	12.55
Nov. 16	15.52	July 4	12.02
Nov. 23	15.99	July 11	11.67
Nov. 30	16.07	July 18	11.54
Dec. 1	16.13	July 25	11.31

Date	Water level	Date	Water level
B-13-20-14ac--Continued			
Aug. 1, 1960	10.66	Oct. 23, 1961	14.34
Aug. 8	10.04	Oct. 27	14.69
Aug. 15	10.44	Nov. 6	15.27
Aug. 22	10.33	Nov. 13	15.85
Aug. 29	10.06	Dec. 7	17.24
Sept. 1	10.64	Dec. 18	17.49
Sept. 8	11.47	Dec. 25	17.92
Sept. 12	11.53	Jan. 1, 1962	18.31
Sept. 19	11.46	Jan. 8	18.65
Sept. 26	11.53	Jan. 15	18.94
Oct. 1	11.16	Jan. 31	19.50
Oct. 3	11.26	Feb. 1	19.52
Oct. 10	12.35	Feb. 5	19.62
Oct. 17	13.25	Feb. 12	19.75
Oct. 21	13.87	Feb. 19	19.24
Nov. 9	15.62	Feb. 26	19.48
Nov. 14	15.96	Mar. 1	19.58
Nov. 21	16.30	Mar. 5	19.72
Nov. 28	16.60	Mar. 12	19.86
Dec. 1	16.65	Mar. 19	19.87
Dec. 5	16.98	Mar. 26	19.29
Dec. 11	17.40	Apr. 2	19.36
Dec. 19	17.89	Apr. 9	19.52
Dec. 26	18.22	Apr. 16	19.66
Jan. 1, 1961	18.50	Apr. 23	18.44
Jan. 2	18.55	Apr. 30	17.69
Jan. 7	18.76	May 1	17.76
Feb. 2	19.68	May 7	18.45
Feb. 6	19.79	May 14	18.48
Feb. 13	19.50	May 21	18.26
Feb. 20	19.75	May 28	16.86
Feb. 27	19.96	June 1	16.18
Mar. 1	20.01	June 4	16.10
Mar. 6	20.14	June 11	15.51
Mar. 13	20.30	June 18	13.96
Mar. 20	20.45	June 25	13.29
Mar. 27	20.59	July 1	13.63
Apr. 1	20.68	July 2	13.52
Apr. 3	20.71	July 16	12.04
Apr. 10	20.83	July 23	11.88
Apr. 17	20.92	July 30	11.00
Apr. 24	21.02	Aug. 1	10.79
May 1	21.14	Aug. 6	10.35
May 8	21.19	Aug. 13	9.76
May 15	21.22	Aug. 20	9.98
May 22	21.22	Aug. 27	10.83
May 29	19.36	Sept. 1	10.53
June 1	18.71	Sept. 3	10.49
June 5	16.80	Sept. 10	10.74
June 12	13.59	Sept. 17	11.05
June 19	13.41	Sept. 24	11.27
June 26	12.39	Oct. 3	12.13
July 1	11.82	Nov. 5	15.59
July 3	11.65	Nov. 12	15.79
July 10	11.42	Nov. 19	16.01
July 17	11.18	Nov. 26	16.28
July 24	11.05	Dec. 1	16.63
July 31	10.58	Dec. 3	16.76
Aug. 1	10.53	Dec. 10	16.98
Aug. 9	9.78	Dec. 17	17.28
Aug. 14	9.50	Dec. 24	17.67
Aug. 21	9.62	Dec. 31	17.99
Aug. 28	9.85	Jan. 1, 1963	18.04
Sept. 1	9.55	Feb. 4	19.23
Sept. 4	9.65	Mar. 1	19.38
Sept. 11	9.68	Apr. 1	19.83
Sept. 18	10.17	May 1	20.05
Oct. 5	12.35	June 1	15.05
Oct. 9	12.92	July 1	13.92
Oct. 16	13.70	July 30	12.25

Date	Water level	Date	Water level
B-13-20-14ac--Continued			
Sept. 6, 1963	10.68	Oct. 22, 1965	14.70
Oct. 7	13.87	Nov. 22	15.60
Oct. 31	15.44	Dec. 20	17.26
Nov. 26	16.82	Jan. 19, 1966	18.25
Dec. 30	18.56	Feb. 21	19.12
Jan. 29, 1964	19.56	Mar. 24	18.80
Feb. 24	17.21	Apr. 21	17.94
Mar. 27	20.69	May 20	15.34
Apr. 27	21.05	June 30	12.22
May 29	18.70	July 23	12.91
June 29	11.10	Aug. 27	11.60
July 31	11.82	Sept. 6	11.54
Aug. 21	11.90	Sept. 27	12.71
Sept. 25, 1964	12.50	Oct. 20	14.72
Oct. 26	14.58	Nov. 19	16.74
Nov. 23	16.53	Dec. 21	18.15
Dec. 28	17.90	Jan. 26, 1967	19.06
Jan. 25, 1965	18.93	Feb. 20	18.97
Feb. 23	19.55	Mar. 27	18.41
Mar. 22	19.46	Apr. 24	20.18
Apr. 24	18.70	May 25	15.53
May 28	14.80	June 26	10.56
June 25	12.00	July 28	11.93
July 24	12.44	Aug. 28	12.57
Aug. 21	11.70	Sept. 25	13.97
Sept. 25	13.42		

B-14-21-24db. John Hartwig. Dug and driven observation water-table well in alluvium, diameter 36 inches to 3/4-inch pipe, depth 33.4 feet. MP top of casing, 0.9 foot above lsd. Highest water level 7.48 below lsd, July 30, 1959; lowest 30.24 below lsd, Mar. 1, 1962. Records available: 1958-67.

May 26, 1958	19.69	Jan. 29, 1959	21.63
May 29	17.43	Feb. 5	21.52
June 5	15.94	Feb. 12	21.73
June 12	14.66	Feb. 19	21.96
June 19	13.37	Feb. 26	22.20
June 27	15.68	Mar. 5	21.94
July 3	16.08	Mar. 12	22.02
July 10	16.24	Mar. 19	21.23
July 17	16.60	Mar. 26	20.24
July 24	15.22	Apr. 2	19.50
July 31	13.60	Apr. 9	20.31
Aug. 7	12.27	Apr. 16	20.42
Aug. 14	12.62	Apr. 23	20.49
Aug. 21	13.88	Apr. 30	20.63
Aug. 28	14.33	May 7	20.28
Sept. 4	14.24	May 13	20.41
Sept. 11	12.25	May 20	19.15
Sept. 18	13.62	May 28	19.64
Sept. 24	13.79	June 4	19.35
Oct. 1	14.84	June 11	17.86
Oct. 9	15.08	June 18	12.47
Oct. 16	16.18	June 25	10.59
Oct. 23	17.12	July 2	10.33
Oct. 29	17.91	July 9	10.98
Nov. 6	18.42	July 16	9.12
Nov. 13	18.86	July 23	9.44
Nov. 20	19.41	July 30	7.48
Nov. 28	19.99	Aug. 6	9.84
Dec. 4	20.18	Aug. 13	10.66
Dec. 11	20.39	Aug. 20	10.33
Dec. 18	20.65	Aug. 27	10.54
Dec. 24	20.88	Sept. 3	10.90
Dec. 31	21.11	Sept. 10	11.19
Jan. 8, 1959	21.36	Sept. 17	11.77
Jan. 15	21.70	Sept. 24	12.62
Jan. 22	21.76	Oct. 1	12.95

Date	Water level	Date	Water level
B-14-21-24db--Continued			
Oct. 9, 1959	11.82	Nov. 9, 1960	18.84
Oct. 15	13.57	Nov. 17	19.44
Oct. 22	14.33	Dec. 1	20.34
Oct. 29	13.82	Dec. 8	20.67
Nov. 5	15.06	Dec. 15	21.07
Nov. 12	15.52	Mar. 17, 1961	26.79
Nov. 20	15.99	Mar. 30	27.49
Nov. 27	16.20	Apr. 20	27.68
Dec. 3	17.32	May 1	28.29
Dec. 10	17.63	June 1	26.16
Dec. 17	18.00	July 3	19.30
Dec. 24	18.36	Aug. 3	18.35
Dec. 31	18.83	Aug. 31	18.78
Jan. 7, 1960	19.45	Oct. 5	21.30
Jan. 14	19.72	Nov. 6	24.48
Jan. 21	20.25	Dec. 7	28.10
Jan. 28	20.45	Jan. 3, 1962	28.48
Feb. 4	20.76	Feb. 1	30.05
Feb. 11	21.22	Mar. 1	30.24
Feb. 18	21.34	Apr. 3	28.88
Feb. 25	21.60	May 2	29.34
Mar. 3	21.84	June 4	23.37
Mar. 10	22.53	July 16	17.84
Mar. 17	22.28	July 31	17.89
Mar. 24	21.11	Aug. 7	17.24
Mar. 31	20.81	Aug. 17	17.30
Apr. 7	20.87	Aug. 28	18.61
Apr. 14	21.02	Oct. 1	21.50
Apr. 21	20.92	Nov. 5	24.69
Apr. 28	21.11	Dec. 4	26.37
May 5	21.30	Jan. 2, 1963	28.04
May 12	21.40	Feb. 4	29.02
May 21	21.03	Feb. 27	30.02
May 26	20.31	Apr. 1	30.08
June 2	17.09	May 1	30.18
June 9	14.54	May 14	29.70
June 16	11.99	June 3	22.26
June 23	10.22	July 1	20.48
June 30	10.83	July 30	19.33
July 7	9.44	Sept. 4	15.57
July 14	8.50	Oct. 7	20.97
July 21	9.52	Nov. 1	23.60
July 28	10.55	Nov. 29	26.03
Aug. 4	10.62	Jan. 2, 1964	27.67
Aug. 11	10.62	Jan. 30	29.55
Aug. 18	11.61	Mar. 2	29.60
Aug. 25	12.61	Mar. 30	29.67
Sept. 1	13.25	Sept. 18	19.15
Sept. 8	13.90	Mar. 4, 1965	28.02
Sept. 15	14.47	Sept. 2	17.38
Sept. 22	15.08	Mar. 7, 1966	28.95
Sept. 29	15.69	Sept. 6	16.10
Oct. 6	16.26	Dec. 1	24.28
Oct. 13	16.90	Mar. 7, 1967	28.33
Oct. 20	17.43	June 6	24.40
Oct. 27	17.94		

#### Petroleum County

A-14-27-6cb. Kenneth Cole. Drilled irrigation water-table well in alluvium, diameter 5 inches, depth 40 feet, steel casing to 30 feet. MP top of casing, 1.60 feet below lsd. Records available: 1965-67.

May 13, 1965	8.01	Aug. 28, 1967	8.67
May 26, 1966	8.34		
Sept. 14	9.42		

Date	Water level	Date	Water level
------	-------------	------	-------------

Phillips County

A-31-34-8ca. W. D. Miller, Drilled unused water-table well in alluvium, diameter 5 inches, depth 15 feet, cased with steel pipe. MP top of casing, 1.70 feet above lsd. Highest water level 0.40 below lsd, July 18, 1963; lowest 6.90 below lsd, March 11, 1953. Records available: 1947-67.

Jan. 13, 1961	6.13	May 13, 1964	5.96
Feb. 9	6.40	June 2	5.36
Mar. 9	6.56	July 15	4.56
Apr. 3	6.66	Aug. 4	4.40
Apr. 17	6.73	Sept. 11	4.21
May 8	6.64	Oct. 22	4.24
June 6	6.05	Nov. 12	4.48
July 10	5.43	Dec. 22	4.95
Aug. 14	4.94	Jan. 22, 1965	5.31
Sept. 13	4.96	Feb. 17	5.72
Oct. 18	5.44	Mar. 19	6.17
Nov. 16	5.72	Apr. 21	5.17
Jan. 17, 1962	6.40	May 27	3.66
Feb. 21	6.69	June 24	3.58
Mar. 15	6.86	July 22	3.67
Apr. 20	6.75	Aug. 16	3.82
May 24	6.23	Oct. 26	4.20
June 19	5.12	Dec. 17	4.69
July 24	4.74	Jan. 21, 1966	5.14
Aug. 14	4.17	Feb. 11	5.38
Sept. 12	4.36	Mar. 15	6.22
Oct. 10	4.74	Apr. 19	5.79
Nov. 9	5.89	May 11	5.62
Dec. 7	5.03	June 9	5.21
Jan. 18, 1963	6.47	July 11	4.62
Feb. 21	6.69	Aug. 5	4.48
Mar. 14	5.51	Sept. 21	3.84
May 17	5.52	Oct. 12	4.23
June 5	5.27	Nov. 17	4.57
July 18	0.40	Dec. 22	5.00
Aug. 7	2.77	Jan. 12, 1967	5.29
Sept. 9	3.73	Mar. 6	5.80
Oct. 7	4.08	Apr. 19	5.47
Nov. 6	4.38	May 26	5.18
Dec. 2	4.73	June 7	5.11
Jan. 8, 1964	4.92	July 12	4.67
Feb. 3	5.52	Aug. 8	4.54
Mar. 5	5.90	Sept. 7	4.46
Apr. 8	6.25	Sept. 27	4.41

Powder River County

D-3-46-17ad. U. S. Forest Service, Drilled unused stock artesian well in Fort Union Formation, diameter 4 inches, depth 144.8 feet, cased with pipe. MP top of casing, 1.90 feet above lsd. Records available: 1965-67.

May 5, 1965	48.07	June 20, 1967	46.15
May 23, 1966	47.13	July 27	45.85
Sept. 12	46.31	Aug. 14	46.17
Nov. 16	47.20	Aug. 24	41.72
Mar. 20, 1967	46.49		

D-4-50-20ba. E. Barnhart. Drilled unused artesian well in Fort Union Formation, diameter 4 inches, depth 131.9 feet, cased with pipe. MP top of casing, 1.40 feet above lsd. Records available: 1965-67.

May 3, 1965	63.58	Nov. 16, 1966	61.02
May 23, 1966	62.70	Mar. 20, 1967	62.86
Sept. 12	52.54		

Measurements temporarily discontinued

D-4-51-34ac. Powder River County. Drilled irrigation water-table well in alluvium, diameter 4 inches, depth unknown. MP top of casing, 0.30 foot above lsd. Records available: 1965-67.

May 6, 1965	12.10	June 20, 1967	11.98
May 23, 1966	12.56	July 27	12.25
Sept. 12	12.58	Aug. 14	12.44
Nov. 16	12.71	Aug. 25	11.46
Mar. 20, 1967	12.44	Sept. 6	12.48

D-5-50-26dal. Joe McDowell. Drilled irrigation water-table well in alluvium, diameter 18 inches, depth 42 feet, cased with corrugated metal pipe, gravel packed from 20 to 42 feet. MP top of casing, 2.90 feet above lsd. Records available: 1965-67.

May 5, 1965	8.78	June 20, 1967	7.70
May 23, 1966	10.42		
Sept. 12	11.53		

D-5-20-26da2. Joe McDowell. Drilled irrigation water-table well in alluvium, diameter 18 inches, depth 42 feet, cased with corrugated metal pipe, gravel packed from 20 to 42 feet. MP inspection port in base of pump, 3.0 feet above lsd. Records available: 1965-67.

May 5, 1965	9.25	June 20, 1967	9.59
May 23, 1966	9.90		
Sept. 12	11.29		

D-5-51-16bc1. Carl Shaffer. Drilled irrigation water-table well in alluvium, diameter 18 inches, depth 55 feet, cased with concrete. MP inspection port in pump base, 2.0 feet above lsd. Records available: 1965-67.

May 5, 1965	12.88	June 20, 1967	11.50
May 23, 1966	13.09		
Sept. 12	14.57		

D-5-51-16bc2. Carl Shaffer. Drilled irrigation water-table well in alluvium, diameter 18 inches, depth 47 feet, cased with concrete. MP inspection port in pump base, 1.50 feet above lsd. Records available: 1965-67.

May 5, 1965	12.55	June 20, 1967	10.17
May 23, 1966	12.78		
Sept. 12	14.23		

D-9-48-5ac. Leonard Somers. Drilled stock artesian well in Fort Union Formation, diameter 4 inches to 108 feet, 2 inches to 417 feet, total depth 420 feet. MP top of casing, 0.40 foot above lsd until Aug. 8, 1967; hole in base of pump, 0.8 foot above lsd after Aug. 8, 1967. Records available: 1965-67.

May 4, 1965	6.85	June 20, 1967	6.80
May 23, 1966	7.20	Aug. 14	6.72
Sept. 12	7.21		
Mar. 20, 1967	6.97		

D-9-48-8ca. Florence Lawrence. Drilled stock water-table well in alluvium, diameter 4 inches, depth 34 feet, cased with pipe. MP top of casing, 1.0 foot above lsd. Records available: 1965-67.

Date	Water level	Date	Water level
May 4, 1965	15.09	June 20, 1967	15.66
May 23, 1966	17.36	Aug. 14	16.96
Sept. 12	18.20		
Mar. 20, 1967	(a)		

a pumping - unable to measure

Powell County

B-6-10-15aa. Quinlan School. Dug unused water-table well in alluvium, diameter 38 inches, depth 12.6 feet, concrete casing. MP top of wood platform at lsd. Highest water level 5.16 below lsd, July 1, 1959; lowest 12.02 below lsd, Mar. 5, 1962. Records available: 1957-67.

Date	Water level	Date	Water level
Sept. 3, 1957	9.23	Jan. 30, 1961	10.08
Oct. 2	8.14	Mar. 6	10.36
Nov. 4	9.52	Apr. 3	10.37
Dec. 2	9.89	May 3	9.98
Jan. 2, 1958	10.15	June 5	6.12
Feb. 3	10.4	June 29	7.39
Mar. 3	10.46	July 31	9.22
Mar. 31	10.69	Aug. 28	9.77
May 1	10.72	Oct. 2	9.73
June 5	5.72	Nov. 1	10.03
July 1	7.29	Dec. 4	10.91
July 30	7.65	Mar. 5, 1962	12.02
Aug. 29	6.6	Sept. 4	9.60
Jan. 5, 1959	9.5	Mar. 5, 1963	11.55
Apr. 1	10.0	Sept. 9	9.67
July 1	5.16	Mar. 9, 1964	11.54
Aug. 2	8.32	Sept. 14	8.60
Sept. 1	8.30	Mar. 9, 1965	10.83
Oct. 1	8.50	Sept. 6	7.35
Nov. 5	9.62	Mar. 9, 1966	11.15
Dec. 1	9.68	Sept. 8	9.45
Jan. 4, 1960	10.73	Oct. 5	9.77
Feb. 1	9.63	Oct. 28	9.98
Mar. 7	10.02	Nov. 29	10.50
Apr. 1	9.80	Jan. 10, 1967	11.24
May 3	8.67	Feb. 7	11.43
May 31	6.95	Mar. 7	11.72
July 6	6.80	Apr. 4	11.89
Aug. 3	8.44	May 3	11.85
Sept. 1	8.10	May 23	11.46
Oct. 5	7.80	July 12	8.08
Nov. 1	8.38	Aug. 15	10.30
Dec. 5	9.30	Sept. 6	10.60

B-7-9-8ad. Thomas Woodard. Dug unused water-table well in alluvium, depth 12.7 feet. MP top of wood cover at lsd and 4,550.5 feet above msl. Highest water level 6.47 below lsd, Sept. 3, 1957; lowest 10.99 below lsd, Feb. 3, 1958. Records available: 1957-67.

Date	Water level	Date	Water level
Sept. 3, 1957	6.47	July 1, 1958	6.82
Oct. 2	7.72	July 30	7.10
Nov. 4	8.10	Aug. 29	6.92
Dec. 2	8.40	Jan. 5, 1959	9.54
Jan. 2, 1958	8.76	Apr. 1	8.90
Feb. 3	10.99	July 1	8.73
Mar. 3	9.14	Aug. 2	7.13
Mar. 31	9.30	Sept. 1	9.61
May 1	9.50	Oct. 1	7.32
June 5	9.72	Nov. 5	7.80

B-7-9-8ad--Continued

Date	Water level	Date	Water level
Dec. 1, 1959	8.13	July 31, 1961	6.94
Jan. 4, 1960	8.62	Aug. 28	6.94
Feb. 1	8.72	Oct. 2	7.25
Mar. 7	8.88	Nov. 1	7.95
Apr. 1	9.22	Dec. 4	8.47
May 3	8.47	Mar. 5, 1962	9.35
May 31	9.67	Sept. 4	6.65
July 5	7.80	Mar. 5, 1963	8.90
Aug. 2	9.10	Sept. 9	6.63
Aug. 30	7.35	Mar. 9, 1964	8.90
Oct. 5	7.93	Sept. 14	8.15
Nov. 1	8.25	Mar. 9, 1965	10.10
Dec. 5	8.75	Sept. 6	7.28
Jan. 30, 1961	9.19	Mar. 9, 1966	9.75
Mar. 6	9.23	Sept. 8	7.50
Apr. 3	9.43	Dec. 2	8.85
May 3	9.64	Mar. 8, 1967	9.97
June 5	10.05	June 7	9.57
June 29	8.20		

B-7-9-31cd. Lewis Johnson. Dug unused water-table well in deposits of Tertiary age, diameter 36 inches, depth 50 feet, cribbed with rock. MP top of cover at lsd. Highest water level 34.57 below lsd, Sept. 9, 1963; lowest 49.05 below lsd, May 3, 1960. Records available: 1957-67.

Date	Water level	Date	Water level
Sept. 3, 1957	40.47	Oct. 5, 1960	39.98
Oct. 2	40.08	Nov. 1	41.29
Dec. 2	42.62	Dec. 5	43.26
Jan. 2, 1958	44.17	Jan. 30, 1961	45.90
Feb. 3	45.91	Mar. 6	46.75
Mar. 3	46.53	Apr. 3	46.95
Mar. 31	46.95	May 3	47.28
May 1	46.90	June 5	46.80
June 5	42.50	June 29	45.00
July 1	46.01	July 31	39.92
July 30	44.99	Aug. 28	39.56
Aug. 29	40.97	Oct. 2	42.13
Jan. 5, 1959	42.62	Nov. 1	43.53
Apr. 1	47.20	Dec. 4	44.93
July 1	46.06	Mar. 5, 1962	46.89
Aug. 2	39.46	Sept. 4	38.68
Sept. 1	39.60	Mar. 3, 1963	47.04
Oct. 1	39.38	Sept. 9	34.57
Nov. 5	41.62	Mar. 9, 1964	47.23
Dec. 1	42.20	Sept. 14	36.25
Jan. 4, 1960	44.79	Mar. 9, 1965	48.45
Feb. 1	47.94	Sept. 6	34.73
Mar. 7	47.93	Mar. 9, 1966	47.60
Apr. 1	47.50	Sept. 8	38.70
May 3	49.05	Dec. 2	45.12
May 31	48.59	Mar. 8, 1967	48.70
July 5	48.70	June 7	48.08
Aug. 2	44.77		
Aug. 30	39.94		

B-8-9-28ac. Don Valiton. Dug domestic water-table well in alluvium, depth 24.8 feet, cribbed with rock. MP top of cement platform at lsd and 4,509.5 feet above msl. Highest water level 18.80 below lsd, July 1, 1958; lowest 21.96 below lsd, Nov. 1, 1961. Records available: 1957-67.

Date	Water level	Date	Water level
Sept. 3, 1957	20.87	Feb. 3, 1958	20.90
Oct. 2	20.91	Mar. 3	20.68
Nov. 4	21.02	Mar. 31	20.22
Dec. 2	21.05	May 1	20.55
Jan. 2, 1958	21.20	June 5	20.16

Date	Water level	Date	Water level
B-8-9-28ac--Continued			
July 1, 1958	18.80	Apr. 3, 1961	21.70
July 30	19.79	May 3	21.40
Aug. 29	20.65	June 5	21.06
Jan. 5, 1959	21.77	June 29	20.83
Apr. 4	19.56	July 31	20.44
Aug. 3	19.87	Aug. 28	21.20
Sept. 2	20.69	Oct. 2	21.29
Oct. 2	21.05	Nov. 1	21.96
Nov. 5	20.91	Dec. 4	21.95
Dec. 2	20.30	Mar. 5, 1962	21.62
Jan. 5, 1960	20.98	Sept. 4	20.77
Feb. 2	21.07	Mar. 5, 1963	20.23
Mar. 8	20.96	Sept. 9	20.67
Apr. 2	21.55	Mar. 9, 1964	20.40
May 4	21.30	Sept. 14	19.80
May 31	20.82	Mar. 9, 1965	19.75
July 6	20.80	Sept. 6	19.33
Aug. 3	21.07	Mar. 9, 1966	19.78
Sept. 1	20.84	Sept. 8	20.26
Oct. 5	21.47	Dec. 2	21.05
Nov. 1	20.66	Mar. 8, 1967	20.86
Dec. 5	20.85	June 7	20.42
Jan. 30, 1961	21.33		
Mar. 6	20.98		

B-10-8-28aa3. H. C. Young. Drilled domestic water-table well in alluvium, diameter 6 inches, depth 23.4 feet, cased with pipe. MP top of casing, 0.7 foot above lsd. Highest water level 3.65 below lsd, June 7, 1967; lowest 10.26 below lsd, Mar. 9, 1967. Records available: 1962-62 and 1966-67.

Apr. 5, 1962	8.40	Dec. 5, 1962	9.38
May 4	4.65	Mar. 8, 1963	9.95
June 6	4.00	Dec. 8, 1966	8.85
Aug. 1	4.88	Mar. 9, 1967	10.26
Sept. 7	6.54	June 7	3.65
Oct. 10	8.47		
Nov. 7	8.82		

#### Prairie County

A-12-55-25cd. Dave Strobel. Drilled stock artesian well in Fox Hills Sandstone and Hell Creek Formation, diameter 4 inches, depth 1,275 feet, cased with pipe. MP hole in side of pump, 3.60 feet above lsd and 2,445.6 feet above msl. Highest water level 0.77 below lsd, Nov. 6, 1964; lowest 15.88 below lsd, Aug. 15, 1967. Records available: 1964-67.

Nov. 6, 1964	0.77	Sept. 13, 1966	11.30
May 28, 1965	2.12	Nov. 17	1.51*
July 12	2.64	Mar. 21, 1967	13.49
Aug. 31	3.75	June 21	14.83
Oct. 27	4.62	Aug. 15	15.88
Mar. 15, 1966	6.70		
July 6	9.01		

\* Poor measurement -- well pumping

A-12-56-19cd. D. H. Baggott. Drilled stock artesian well in Fox Hills Sandstone and Hell Creek Formation, diameter 2 inches, depth 1,140 feet. MP top of culvert, 2.0 feet above lsd until Mar. 15, 1966; top of casing, 7.4 feet below lsd after Mar. 15, 1966. LSD 2,431 feet above msl. Highest water level +9.67 above lsd, Aug. 11, 1963; lowest 26.82 below lsd, May 2, 1966. Records available: 1963-66.

Date	Water level	Date	Water level
A-12-56-19cd--Continued			
Aug. 11, 1963	+9.67	Aug. 31, 1965	13.90
July 14, 1964	+1.80	Mar. 15, 1966	25.58
Aug. 24	0.04	May 2	26.82
Nov. 6	7.01	July 6	(b)
May 28, 1965	10.49		
July 12	12.28		

b Unable to measure after July 6, 1966

A-12-56-23dc. Shell Oil Co. Drilled unused artesian well in Fox Hills Sandstone and Hell Creek Formation, diameter 4 inches, depth 1,185 feet, cased with pipe. MP top of casing, 1.50 feet above lsd. Highest water level 219.5 below lsd, Oct. 5, 1962; lowest 468.92 below lsd, Mar. 21, 1967. Records available: 1962-67.

Oct. 5, 1962	219.50	May 28, 1965	289.48
Dec. 13	220.27	July 12	297.47
Mar. 26, 1963	276.60	Aug. 31	309.01
May 16	279.20	Oct. 27	321.69
June 24	279.14	Mar. 15, 1966	347.33
July 25	278.47	May 2	357.14
Aug. 27	272.08	July 6	358.64
Oct. 1	265.80	Sept. 13	358.86
Mar. 17, 1964	264.25	Nov. 17	398.94
July 14	267.00	Mar. 21, 1967	468.92
Aug. 24	269.58	June 21	466.93
Nov. 6	270.69	Aug. 15	468.41
Jan. 28, 1965	270.98		
Apr. 2	281.50		

A-12-56-34da. Shell Oil Co. Drilled observation artesian well in Fox Hills Sandstone and Hell Creek Formation, diameter 4 inches, depth 1,467 feet, cased with pipe. MP base of shelter house, 3.1 feet above lsd. Highest water level 224.89 below lsd, Dec. 13, 1962; lowest 363.48 below lsd, Apr. 4, 1967. Records available: 1962-67.

Dec. 13, 1962	224.89	Apr. 2, 1965	305.29
Mar. 26, 1963	238.54	May 28	314.47
May 16	249.63	Aug. 31	319.42
June 24	246.45	Oct. 27	324.04
July 1	251.86	May 2, 1966	349.46
July 25	252.30	July 6	354.08
Aug. 27	252.86	Sept. 13	359.69
Sept. 12	252.0*	Nov. 17	358.94
Oct. 1	253.29	Mar. 21, 1967	(a)
Mar. 17, 1964	259.37	Apr. 4	363.48
July 14	280.38	June 21	360.41
Aug. 24	288.82	Aug. 15	359.95
Nov. 11	298.39		

\* Measurement by Shell Oil Co. a unable to measure (mud)

#### Ravalli County

B-5-19-26bc. Bonneville Power Administration. Drilled observation water-table well in talus deposits, diameter 6 inches, depth 52 feet, cased with pipe. MP floor of recorder shelter, 3.2 feet above lsd. Highest water level 32.19 below lsd, June 30, 1964; lowest 38.20 below lsd, Feb. 27, 1964. Records available: 1962-66.

July 20, 1962	35.81	Oct. 20, 1962	37.60
Aug. 20	37.00	Nov. 20	38.07
Sept. 20	37.85	Dec. 20	37.75

Date	Water level	Date	Water level
B-5-19-26bc--Continued			
Jan. 20, 1963	35.39	June 24, 1965	32.77
Feb. 20	37.05	Aug. 5	35.62
Mar. 20	37.77	Sept. 1	36.14
Apr. 20	35.98	Oct. 1	36.20
May 20	35.07	Oct. 27	36.75
June 20	34.34	Nov. 29	37.17
July 20	35.59	Jan. 3, 1966	35.21
Aug. 20	36.78	Feb. 2	36.70
Sept. 20	37.52	Feb. 24	37.53
Oct. 20	37.76	Mar. 30	37.45
Nov. 20	37.98	Apr. 28	36.18
Dec. 20	35.81	May 26	35.74
Jan. 26, 1964	37.56	June 29	35.91
Feb. 27	38.20	July 28	37.19
Apr. 1	37.89	Aug. 26	38.01
Apr. 28	36.44	Sept. 27	38.22
May 20	33.46	Oct. 26	38.48
June 30	32.19	Nov. 28	38.60
July 22	34.29	Dec. 27	38.25
Aug. 25	35.39	Jan. 26, 1967	37.92
Sept. 29	36.73	Feb. 21	38.51
Oct. 21	37.11	Mar. 28	38.14
Dec. 3	37.42	Apr. 25	37.57
Jan. 5, 1965	35.31	May 25	34.07
Feb. 4	36.83	June 26	33.04
Feb. 24	36.89	July 26	35.92
Mar. 30	36.13	Aug. 28	35.22
Apr. 27	33.37	Sept. 25	35.84
May 26	33.09		

B-6-20-19cc. Ravalli County Fairgrounds. Dug and driven irrigation water-table well in alluvium, diameter 48 inches to 3/4 inch, depth 20 feet. MP top of 3/4-inch pipe, 0.6 foot above lsd and 3,559.6 feet above msl. Highest water level 3.14 below lsd, June 24, 1960; lowest, dry at 20.0 below lsd, Mar. 28, 1967. Records available: 1956-67.

May 7, 1956	11.66	Mar. 27, 1959	14.17
June 5	6.19	Apr. 24	14.33
July 5	5.73	May 29	7.52
Aug. 10	4.64	June 26	4.49
Aug. 28	4.90	July 23	3.91
Oct. 3	7.45	Aug. 28	4.49
Nov. 6	10.88	Sept. 25	7.49
Dec. 5	12.33	Oct. 29	10.99
Jan. 3, 1957	13.60	Nov. 27	12.03
Feb.	14.11	Dec. 31	12.57
Apr. 8	14.93	Jan. 29, 1960	13.73
May 2	15.51	Feb. 26	14.53
June 3	8.33	Mar. 25	14.97
July 3	4.60	Apr. 29	15.10
Aug. 13	5.71	May 27	9.81
Sept. 12	6.33	June 24	3.14
Oct. 2	7.67	July 15	4.27
Nov. 6	11.13	Aug. 26	4.37
Dec. 3	12.32	Sept. 30	6.90
Jan. 6, 1958	13.46	Oct. 28	8.90
Feb. 11	14.55	Nov. 25	10.38
Mar. 3	14.95	Dec. 16	11.83
Apr. 3	15.47	Feb. 6, 1961	13.43
May 30	8.61	Mar. 31	14.26
June 28	5.77	May 2	14.42
July 25	5.90	June 2	5.07
Aug. 29	4.83	Aug. 10	4.46
Sept. 26	5.22	Sept. 1	5.43
Oct. 31	9.25	Oct. 30	10.65
Nov. 28	10.41	Dec. 1	11.83
Dec. 26	11.78	Jan. 31, 1962	13.44
Jan. 30, 1959	12.96	Mar. 2	14.33
Feb. 27	13.75	Apr. 2	14.91

Date	Water level	Date	Water level
B-6-20-19cc--Continued			
May 2, 1962	13.64	Oct. 21, 1964	8.53
June 4	5.67	Nov. 3	11.05
July 2	3.82	Jan. 6, 1965	11.47
July 30	3.40	Feb. 4	12.24
Aug. 27	4.38	Feb. 24	12.64
Sept. 24	5.84	Mar. 30	13.51
Oct. 1	6.43	Apr. 27	14.21
Nov. 5	9.85	May 27	6.41
Dec. 31	11.76	June 30	3.84
Jan. 28, 1963	12.80	Aug. 4	4.18
Mar. 4	13.30	Sept. 1	4.77
Apr. 3	14.20	Sept. 29	7.48
Apr. 12	14.34	Oct. 27	10.07
May 6	12.45	Nov. 29	11.17
June 5	5.20	Jan. 3, 1966	12.27
June 14	5.82a	Feb. 2	13.38
June 25	4.24	Feb. 24	13.96
July 16	6.17	Mar. 8	13.12
July 30	4.78	Mar. 30	14.30
Aug. 13	5.05	Apr. 28	13.20
Aug. 26	4.30	May 26	5.58
Sept. 9	4.90	June 29	4.66a
Sept. 24	6.10	July 28	5.11
Oct. 7	7.76	Aug. 26	5.11
Oct. 22	8.63	Sept. 7	4.86
Nov. 5	9.90	Sept. 27	6.52
Nov. 18	10.90	Oct. 26	8.97
Dec. 2	11.65	Nov. 28	10.96
Dec. 31	12.84	Dec. 27	11.75
Feb. 27, 1964	14.27	Jan. 25, 1967	12.49
Mar. 13	14.85	Feb. 22	14.10
Apr. 1	15.38	Mar. 28	(f)
Apr. 28	16.01	Apr. 25	15.65
May 21	12.58	May 26	13.92
July 1	4.78	June 26	8.88a
July 22	4.30	July 26	5.11a
Aug. 25	4.04	Aug. 28	4.00
Sept. 29	7.17	Sept. 25	4.47

a pumping  
f dry

B-6-21-2ba. Jane Hauf. Drilled unused domestic artesian well in deposits of Tertiary age, diameter 4 inches, depth 84 feet, cased with pipe. MP top of casing, 1.3 feet above lsd. Highest water level 42.11 below lsd, July 5, 1961; lowest 61.00 below lsd, Mar. 3, 1961. Records available: 1958-67.

May 30, 1958	58.11	Oct. 31, 1958	54.72
June 6	57.18	Nov. 7	54.15
June 17	55.58	Nov. 24	54.62
June 20	55.14	Nov. 28	54.99
June 28	54.27	Dec. 5	55.17
July 2	54.03	Dec. 12	55.36
July 11	53.97	Dec. 19	55.77
July 17	54.06	Dec. 26	56.11
July 25	54.28	Jan. 2, 1959	56.61
Aug. 1	54.07	Jan. 9	56.79
Aug. 8	54.07	Jan. 23	57.91
Aug. 15	54.51	Jan. 30	58.37
Aug. 22	54.83	Feb. 6	58.59
Aug. 29	54.69	Feb. 13	58.94
Sept. 5	54.70	Feb. 20	59.22
Sept. 12	55.25	Feb. 27	59.37
Sept. 19	55.68	Mar. 5	59.51
Sept. 26	56.20	Mar. 13	59.57
Oct. 3	56.37	Mar. 20	59.72
Oct. 10	56.22	Mar. 27	59.69
Oct. 17	55.88	Apr. 1	59.66
Oct. 24	55.47	Apr. 10	59.41



Date	Water level	Date	Water level
B-6-21-2ba--Continued			
Apr. 17, 1959	59.36	May 13, 1960	58.08
Apr. 24	59.36	May 20	56.80
May 1	59.54	May 27	56.04
May 8	59.76	June 3	55.30
May 15	59.84	June 17	53.57
May 22	59.56	June 24	51.80
May 29	58.86	July 1	51.09
June 5	58.12	July 8	50.29
June 12	56.88	July 15	49.66
June 19	55.16	July 29	49.44
June 26	53.84	Aug. 5	50.14
July 3	51.83	Aug. 12	50.78
July 10	50.49	Aug. 19	51.31
July 17	48.72	Aug. 26	50.75
July 23	47.06	Sept. 9	51.73
July 31	46.33	Sept. 16	51.70
Aug. 7	46.41	Sept. 30	51.84
Aug. 14	47.02	Oct. 7	52.26
Aug. 21	48.15	Oct. 14	53.00
Aug. 28	49.11	Oct. 21	53.53
Sept. 4	49.84	Oct. 28	54.20
Sept. 11	50.99	Nov. 4	55.00
Sept. 18	51.78	Nov. 10	55.02
Sept. 25	52.39	Nov. 18	56.04
Oct. 2	52.99	Nov. 25	56.53
Oct. 9	53.23	Dec. 2	57.06
Oct. 16	53.90	Dec. 9	57.54
Oct. 23	54.09	Dec. 16	57.97
Oct. 29	54.04	Feb. 6, 1961	60.48
Nov. 6	54.08	Mar. 3	61.00
Nov. 13	54.20	Mar. 31	59.32
Nov. 20	54.24	May 2	58.00
Nov. 27	54.58	June 2	54.00
Dec. 4	54.80	July 5	42.11
Dec. 11	55.03	Aug. 4	45.40
Dec. 18	55.54	Sept. 1	49.27
Dec. 26	56.23	Oct. 6	51.65
Dec. 31	56.32	Oct. 30	51.34
Jan. 22, 1960	57.85	Dec. 1	52.36
Jan. 29	58.26	Mar. 2, 1962	57.82
Feb. 5	58.57	Aug. 27	43.57
Feb. 12	58.94	Mar. 4, 1963	57.47
Feb. 19	59.04	Sept. 6	49.04
Mar. 11	59.78	Mar. 13, 1964	57.93
Mar. 18	60.15	Mar. 5, 1965	57.90
Mar. 25	60.21	Sept. 3	41.48
Apr. 1	60.11	Mar. 8, 1966	58.90
Apr. 8	60.78	Sept. 7	49.00
Apr. 15	59.56	Nov. 30	55.32
Apr. 22	59.38	Mar. 6, 1967	57.66
Apr. 29	59.35	June 5	53.52
May 6	58.99		

B-6-21-26db. Hamilton Cemetery. Drilled unused water-table well in deposits of Pleistocene and Tertiary age, diameter 8 inches, depth 365 feet, cased with pipe. MP top of casing, 1.4 feet above lsd and 3,621.7 feet above ms1. Highest water level 6.96 below lsd, Aug. 5, 1960; lowest 22.89 below lsd, Mar. 11, 1960. Records available: 1958-67.

May 30, 1958	12.72	Feb. 13, 1959	19.63
June 28	9.73	Feb. 27	20.91
July 2	10.85	Mar. 13	17.43
Aug. 8	8.90	Apr. 10	17.76
Sept. 12	9.81	Apr. 24	18.06
Oct. 10	12.06	May 8	15.43
Nov. 14	14.82	June 12	9.91
Dec. 12	14.88	July 10	8.59
Jan. 9, 1959	16.23	Aug. 7	7.00

Date	Water level	Date	Water level
B-6-21-26db--Continued			
Sept. 11, 1959	9.84	May 2, 1961	21.52
Oct. 9	12.62	June 2	14.36
Nov. 20	18.34	July 5	8.72
Dec. 4	17.19	Aug. 4	8.36
Dec. 31	18.54	Sept. 1	9.79
Jan. 15, 1960	20.10	Oct. 6	11.44
Feb. 12	21.97	Oct. 30	14.08
Feb. 19	22.28	Dec. 1	16.39
Mar. 11	22.89	Mar. 2, 1962	17.14
Apr. 8	21.32	Aug. 27	8.67
May 6	16.65	Mar. 4, 1963	14.93
June 3	11.34	Sept. 6	10.23
July 8	8.49	Mar. 13, 1964	21.60
Aug. 5	6.96	Mar. 5, 1965	9.50
Sept. 9	9.05	Sept. 3	8.60
Oct. 14	13.60	Mar. 8, 1966	17.55
Nov. 10	16.49	Sept. 7	11.04
Dec. 9	15.05	Nov. 30	13.23
Feb. 6, 1961	18.85	Mar. 6, 1967	17.75
Mar. 3	19.40	June 5	8.05
Mar. 31	20.29		

B-7-20-32dd1. Corvallis Rural Fire Dept. Dug water-table well in alluvium, diameter 48 inches, depth 12.7 feet, concrete casing. MP top of cover at lsd and 3,470.7 feet above ms1. Highest water level 3.54 below lsd, Aug. 19, 1960; lowest 11.30 below lsd, Apr. 29, 1960. Records available: 1958-67.

May 30, 1958	9.98	Aug. 5, 1960	3.93
June 20	7.56	Sept. 9	4.55
July 11	6.77	Oct. 7	4.76
Aug. 8	3.74	Nov. 10	6.54
Sept. 12	4.35	Dec. 9	7.95
Oct. 10	5.84	Feb. 6, 1961	9.78
Nov. 7	6.87	Mar. 3	10.28
Dec. 12	8.17	Mar. 31	10.58
Jan. 9, 1959	9.11	May 2	11.15
Feb. 13	10.38	June 2	8.26
Mar. 13	10.66	July 5	4.96
Apr. 10	10.66	Aug. 4	4.17
May 1	10.79	Sept. 1	3.57
May 8	10.58	Oct. 6	5.24
June 12	7.82	Oct. 30	6.78
July 10	5.85	Dec. 1	8.17
Aug. 14	4.38	Mar. 2, 1962	10.87
Aug. 21	4.32	Aug. 27	3.94
Sept. 11	4.86	Mar. 4, 1963	9.35
Oct. 9	6.32	Sept. 6	3.70
Nov. 13	7.85	Mar. 13, 1964	10.85
Dec. 11	8.60	Mar. 5, 1965	9.55
Jan. 8, 1960	9.57	Sept. 3	4.45
Feb. 12	10.44	Mar. 8, 1966	11.02
Mar. 11	10.65	Sept. 7	4.18
Apr. 8	11.06	Nov. 30	8.00
Apr. 29	11.30	Mar. 6, 1967	11.18
May 13	11.13	June 5	9.08
June 3	8.43		
July 8	4.98		

B-8-20-19ba3. U. S. Geol. Survey. Drilled observation well in deposits of Pleistocene and Tertiary age, diameter 3/4 inch, depth 52 feet, cased with pipe. MP top of casing, 0.5 foot above lsd and 3,393.4 feet above ms1. Highest water level 12.39 feet below lsd, Sept. 2, 1961; lowest 18.03 below lsd, Mar. 8, 1966. Records available: 1959-67.

Apr. 10, 1959	16.14	May 10, 1959	14.28
Apr. 22	16.37	May 29	12.92



Date	Water level	Date	Water level
B-8-20-19ba3--Continued			
June 5, 1959	13.52	Nov. 16, 1960	14.16
June 29	12.70	Dec. 18	15.42
July 10	13.76	Jan. 2, 1961	15.61
July 27	13.05	Feb. 6	16.15
Aug. 5	13.76	Mar. 3	15.84
Aug. 20	13.01	Apr. 2	16.28
Aug. 31	13.55	May 2	13.93
Sept. 16	12.74	May 31	12.54
Sept. 24	13.37	June 6	13.23
Oct. 5	13.65	June 13	12.55
Oct. 12	13.01	June 26	13.26
Oct. 31	14.10	July 7	12.69
Nov. 20	14.70	July 31	13.40
Nov. 23	13.59	Aug. 13	12.88
Dec. 10	15.07	Aug. 20	13.56
Jan. 10, 1960	15.95	Sept. 2	12.39
Jan. 28	16.42	Sept. 30	13.27
Feb. 10	16.37	Oct. 9	13.15
Mar. 16	17.03	Oct. 31	13.75
Mar. 28	16.25	Nov. 22	14.68
Apr. 8	16.58	Dec. 6	13.99
May 24	13.03	Dec. 30	15.06
June 6	13.54	Mar. 2, 1962	16.86
June 17	12.84	Aug. 27	14.12
July 1	13.37	Mar. 4, 1963	15.60
July 7	12.97	Sept. 6	13.92
July 13	13.58	Mar. 13, 1964	16.47
Aug. 2	12.91	Mar. 5, 1965	16.20
Aug. 15	13.65	Sept. 3	14.65
Aug. 25	13.10	Mar. 8, 1966	18.03
Sept. 1	13.61	Sept. 7	15.32
Sept. 6	13.13	Nov. 30	15.90
Oct. 10	14.13	Mar. 6, 1967	16.87
Oct. 20	13.97	June 5	14.35
Nov. 23	14.45		

B-9-20-12bb. Raymond Bell. Dug unused water-table well in alluvium, diameter 42 inches, depth 19.7 feet, concrete casing. MP top of cover at lsd and 3,278.7 feet above msl. Highest water level 3.83 below lsd, Aug. 14, 1958; lowest 18.53 below lsd, May 10, 1961. Records available: 1958-67.

May 7, 1958	17.64	July 22, 1960	10.06
June 7	13.25	Aug. 8	7.79
July 10	8.18	Aug. 21	7.48
Aug. 14	3.83	Sept. 10	9.16
Sept. 10	8.53	Oct. 10	11.01
Oct. 10	11.94	Nov. 10	13.48
Nov. 10	13.70	Dec. 10	15.26
Dec. 10	15.07	Dec. 29	15.90
Jan. 9, 1959	15.94	Feb. 10, 1961	16.64
Jan. 23	16.28	Mar. 10	17.16
Feb. 6	16.20	Apr. 10	17.88
Mar. 10	16.55	May 10	18.44
Apr. 10	17.17	May 23	18.53
May 10	17.54	June 10	14.62
June 10	15.30	July 10	12.16
July 10	10.24	Aug. 10	10.83
Aug. 8	9.13	Aug. 31	7.67
Sept. 4	7.98	Sept. 3	7.96
Oct. 9	11.82	Oct. 10	11.22
Nov. 10	14.40	Nov. 10	14.07
Dec. 10	15.56	Dec. 10	15.51
Jan. 10, 1960	16.34	Dec. 31	16.08
Feb. 10	16.87	Mar. 2, 1962	16.74
Mar. 10	17.33	Aug. 27	8.77
Apr. 10	17.77	Mar. 4, 1963	16.55
May 14	18.37	Sept. 6	8.74
June 9	14.97	Mar. 13, 1964	17.12
July 9	9.42	Mar. 5, 1965	15.80

Date	Water level	Date	Water level
B-9-20-12bb--Continued			
Sept. 3, 1965	9.05	Mar. 6, 1967	17.02
Mar. 8, 1966	16.70	June 5	15.42
Sept. 7	9.65		
Nov. 30	15.08		

B-9-20-21ad1. Dan Shea. Drilled water-table well in alluvium underlying river terrace, diameter 4 inches, depth 32.2 feet, cased with pipe. MP top of casing, 0.8 foot above lsd and 3,308.8 feet above msl. Highest water level 2.95 below lsd, June 29, 1964; lowest 27.99 below lsd, Apr. 1, 1961. Records available 1956-67.

Jan. 5, 1956	18.84	Jan. 1, 1961	21.75
Feb. 1	20.50	Feb. 1	25.20
Mar. 1	22.81	Mar. 3	26.42
Apr. 1	19.69	Apr. 1	27.99
May 8	18.89	May 1	24.10
June 7	3.19	June 2	7.49
July 1	4.53	July 5	5.29
Aug. 1	8.53	Aug. 4	7.69
Sept. 1	10.00	Sept. 2	9.96
Oct. 1	12.21	Oct. 1	9.90
Nov. 1	13.22	Nov. 7	14.57
Dec. 1	17.63	Dec. 1	18.59
Jan. 1, 1957	22.50	Jan. 2, 1962	23.45
Feb. 2	25.35	Feb. 1	24.84
Mar. 1	25.44	Mar. 2	24.86
Apr. 1	25.25	Apr. 2	25.45
May 1	22.45	May 2	25.50
June 1	4.84	June 4	4.01
July 1	5.12	Aug. 1	9.65
Aug. 1	10.05	Sept. 1	8.76
Sept. 5	10.71	Oct. 1	7.57
Oct. 1	12.77	Nov. 5	7.88
Nov. 1	7.03	Dec. 3	11.20
Dec. 2	11.87	Jan. 1, 1963	15.57
Jan. 1, 1958	19.31	Mar. 4	20.43
Feb. 1	22.21	Apr. 3	20.60
Mar. 1	23.27	May 3	15.00
Apr. 1	23.83	June 3	9.25
May 1	18.84	July 1	4.38
June 1	5.08	Sept. 6	8.40
July 1	6.37	Oct. 4	7.50
Aug. 1	7.71	Nov. 4	7.66
Sept. 1	8.37	Nov. 26	9.90
Oct. 1	9.67	Dec. 30	18.15
Nov. 1	13.88	Jan. 28, 1964	23.59
Dec. 1	17.39	Feb. 26	26.15
Jan. 1, 1959	20.86	Mar. 27	25.40
Feb. 1	21.92	Apr. 26	24.08
Mar. 1	23.84	May 21	21.02
Apr. 1	23.65	June 29	2.95
May 1	23.35	July 23	6.32
June 1	17.12	Aug. 25	5.69
July 1	3.92	Sept. 29	7.86
Aug. 1	7.48	Oct. 22	9.83
Sept. 1	10.80	Nov. 25	13.68
Oct. 1	11.05	Dec. 28	14.45
Nov. 1	13.79	Jan. 29, 1965	17.30
Dec. 1	17.56	Feb. 24	16.70
Jan. 1, 1960	20.11	Mar. 28	18.58
Feb. 1	23.32	Apr. 22	18.73
Mar. 1	24.77	May 26	6.88
Apr. 1	23.75	June 28	2.99
May 1	21.63	July 31	8.58
June 1	5.53	Aug. 30	6.17
July 1	4.57	Sept. 29	6.78
Aug. 1	9.66	Oct. 27	14.32
Sept. 1	11.67	Nov. 29	20.21
Oct. 1	15.63	Dec. 20	22.77
Nov. 1	18.86	Jan. 3, 1966	24.10
Dec. 1			

Date	Water level	Date	Water level
B-9-20-21ad1--Continued			
Jan. 31, 1966	23.10	Nov. 28, 1966	18.62
Feb. 2	23.23	Dec. 27	22.30
Feb. 25	24.49	Jan. 26, 1967	25.03
Mar. 30	23.54	Feb. 22	23.53
Apr. 28	22.53	Mar. 27	20.91
May 26	3.72	Apr. 25	20.88
June 29	4.33	May 26	7.79
July 28	7.77	June 26	4.26
Aug. 26	8.94	July 27	9.10
Sept. 27	12.43	Aug. 28	7.58
Oct. 25	15.68	Sept. 25	12.80

B-10-20-13ba. Bonneville Power Administration. Drilled observation water-table well in alluvium, diameter 6 inches, depth 50.5 feet. MP top of casing, 0.5 foot above lsd. Highest water level 2.48 below lsd, June 15, 1959; lowest 7.03 below lsd, Mar. 13, 1964. Records available: 1959-67.

May 14, 1959	5.42	Jan. 10, 1962	6.24
June 15	2.48	Jan. 21	6.56
July 11	4.64	Feb. 15	6.00
Aug. 19	5.60	Mar. 16	6.69
Sept. 10	4.79	Apr. 27	5.09
Oct. 5	5.29	May 5	5.53
Oct. 16	4.52	May 26	4.09
Nov. 18	5.69	June 7	4.65
Dec. 16	5.95	June 17	3.70
Jan. 25, 1960	6.49	July 24	5.24
Feb. 9	6.39	Aug. 5	4.37
Mar. 6	6.89	Aug. 15	5.43
Apr. 11	5.54	Sept. 3	5.38
May 2	6.05	Sept. 17	4.60
May 14	4.25	Oct. 9	5.07
June 17	3.21	Oct. 16	4.50
July 24	5.56	Nov. 19	6.01
July 31	4.53	Nov. 26	4.73
Aug. 25	5.27	Dec. 20	5.50
Sept. 5	4.90	Dec. 31	6.02
Sept. 30	6.08	Jan. 10, 1963	6.23
Oct. 14	5.19	Mar. 19	6.29
Nov. 14	6.50	Apr. 15	6.40
Dec. 14	6.78	May 24	4.05
Jan. 6, 1961	6.95	June 5	3.38
Feb. 15	6.47	June 13	4.48
Mar. 22	6.78	July 1	4.22
Apr. 8	6.38	July 23	5.41
May 15	6.00	Sept. 6	5.23
June 5	3.04	Oct. 1	6.07
June 30	5.23	Nov. 4	6.32
July 7	4.87	Dec. 3	6.34
July 26	5.72	Mar. 13, 1964	7.03
Aug. 12	6.00	Mar. 5, 1965	5.96
Aug. 29	6.22	Sept. 3	5.00
Sept. 5	5.00	Mar. 8, 1966	6.55
Oct. 10	6.08	Sept. 7	5.26
Oct. 15	6.75	Nov. 30	6.50
Oct. 23	6.00	Mar. 6, 1967	6.70
Nov. 22	6.37	June 5	3.75
Dec. 6	6.20		

#### Richland County

A-27-56-3cc. U. S. Geol. Survey. Drilled water-table well in alluvium, diameter 1 1/4 inches, depth 75 feet, cased to 75 feet, finished with continuous-slot screen. MP top of casing, 0.8 foot above lsd and 1,903.1 feet above msl. Highest water level 8.15 below lsd, Mar. 13, 1967; lowest 13.93 below lsd, Nov. 18, 1963. Records available: 1963-67.

Date	Water level	Date	Water level
A-27-56-3cc--Continued			
Sept. 12, 1963	13.56	Dec. 21, 1965	10.32
Nov. 12	13.85	Jan. 25, 1966	9.13
Nov. 18	13.93	Feb. 25	8.56
Jan. 20, 1964	11.52	Mar. 20	8.35
Feb. 10	10.60	Apr. 18	9.29
Mar. 9	10.64	May 17	9.63
Apr. 7	11.66	June 20	10.44
May 6	12.60	July 19	11.14
July 21	13.34	Aug. 22	12.28
Aug. 11	13.65	Sept. 19	12.75
Oct. 20	13.41	Oct. 24	13.13
Nov. 24	13.51	Nov. 21	12.74
Dec. 28	12.12	Dec. 19	11.31
Jan. 25, 1965	10.62	Jan. 23, 1967	9.75
Feb. 24	9.75	Feb. 20	8.85
Mar. 22	9.50	Mar. 13	8.15
Apr. 27	9.24	Mar. 24	7.61
May 28	9.21	Apr. 18	8.35
June 22	9.70	May 16	9.03
July 20	9.50	June 20	9.27
Aug. 24	10.42	July 25	10.75
Sept. 27	10.24	Aug. 22	11.14
Oct. 25	10.33	Sept. 19	11.05
Nov. 23	10.09		

#### Roosevelt County

A-26-46-6cb. U. S. Geol. Survey. Drilled observation water-table well in alluvium, diameter 3/4 inch, depth 15.0 feet, cased with plastic pipe. MP top of casing, 1.30 feet above lsd and 2,008.8 feet above msl. Highest water level 5.19 below lsd, Aug. 4, 1966; lowest 8.49 below lsd, Mar. 29, 1963. Records available: 1962-67.

Aug. 16, 1962	7.01	June 10, 1965	7.34
Aug. 17	6.98	Aug. 16	7.50
Aug. 25	7.13	Nov. 13	7.43
Aug. 29	7.20	Mar. 13, 1966	7.92
Sept. 21	7.33	May 25	7.66
Nov. 1	7.57	Aug. 4	5.19
Mar. 29, 1963	8.49	Nov. 19	6.41
July 4	7.07	Mar. 23, 1967	(a)
Nov. 19	6.88	June 27	(a)
Jan. 19, 1964	7.65	Aug. 28	5.51
Oct. 10	7.31		

a Unable to measure

A-28-49-36cb. U. S. Geol. Survey. Drilled water-table well in deposits of Pleistocene age, diameter 1 1/4 inches, depth 52 feet, cased with pipe, bottom 3 feet continuous-slot screen. MP top of casing, 2.50 feet above lsd, and 1,975 feet above msl. Highest water level 15.40 below lsd, Jan. 23, 1967; lowest 22.36 below lsd, Oct. 20, 1964. Records available: 1963-67.

Nov. 15, 1963	21.87	Dec. 28, 1964	22.07
Nov. 18	21.90	Jan. 27, 1965	21.91
Jan. 20, 1964	20.83	Feb. 24	21.77
Feb. 10	20.67	Mar. 22	21.70
Mar. 10	20.94	Apr. 27	21.38
Apr. 7	20.74	May 28	20.62
May 6	20.78	June 22	21.67
June 10	21.32	July 20	21.58
July 13	21.44	Aug. 24	21.80
Aug. 11	22.04	Sept. 28	21.71
Sept. 14	22.35	Oct. 25	21.67
Oct. 20	22.36	Nov. 22	21.51
Nov. 24	22.27	Dec. 21	21.33

Date	Water level	Date	Water level
A-28-49-36cb--Continued			
Jan. 25, 1966	21.11	Dec. 19, 1966	16.42
Feb. 25	20.90	Jan. 23, 1967	15.40
Mar. 20	20.93	Feb. 23	16.89
Apr. 18	20.92	Mar. 13	16.29
May 17	20.94	Apr. 17	17.74
June 20	21.25	May 16	18.26
July 19	20.07	June 20	18.62
Aug. 22	20.81	July 17	20.15
Sept. 19	21.24	Aug. 22	19.73
Oct. 24	21.33	Sept. 19	19.14
Nov. 21	20.44		

A-28-57-28dd. Abandoned School. Drilled unused water-table well in alluvium, diameter 18 inches, depth 29 feet, cased with tile. MP top of platform, 0.20 foot above lsd. Highest water level 19.36 below lsd, July 17, 1967; lowest 27.52 below lsd, Apr. 25, 1946 and Nov. 19, 1957. Records available: 1946-67.

Jan. 10, 1961	24.05	July 14, 1964	22.94
Feb. 14	24.01	Aug. 11	23.43
Mar. 16	23.82	Sept. 21	23.28
May 1	23.84	Oct. 22	23.01
June 1	23.79	Nov. 24	22.74
July 18	23.94	Dec. 28	23.09
Aug. 28	23.81	Jan. 25, 1965	23.16
Sept. 11	23.99	Feb. 24	23.20
Oct. 9	23.65	Mar. 22	23.44
Nov. 6	23.99	Apr. 27	22.82
Jan. 30, 1962	24.19	May 28	22.07
Feb. 28	24.33	June 22	21.62
Apr. 5	24.08	July 20	21.26
Apr. 30	24.08	Aug. 24	21.32
May 14	24.14	Sept. 28	21.32
June 20	24.08	Oct. 25	22.46
July 9	24.13	Nov. 23	21.12
Aug. 29	24.44	Dec. 21	21.09
Oct. 1	24.55	Jan. 25, 1966	20.93
Nov. 6	24.50	Feb. 25	21.01
Dec. 3	24.35	Mar. 20	21.18
Jan. 2, 1963	24.32	Apr. 18	21.11
Jan. 30	24.19	May 17	21.15
Feb. 19	24.55	June 20	20.95
Mar. 18	24.46	July 6	21.13
Apr. 2	24.47	July 19	21.03
May 20	24.41	Aug. 22	21.21
July 1	24.48	Sept. 19	20.92
Aug. 2	24.25	Oct. 24	21.12
Sept. 24	23.95	Nov. 21	20.76
Oct. 21	23.56	Dec. 19	21.07
Nov. 5	23.70	Jan. 23, 1967	21.45
Nov. 12	24.17	Feb. 21	21.03
Dec. 31	23.41	Mar. 24	20.77
Jan. 28, 1964	23.10	Apr. 18	20.68
Feb. 18	24.12	May 16	20.16
Mar. 17	24.21	June 20	19.51
Apr. 20	23.66	July 17	19.36
May 11	24.13	Aug. 22	19.49
June 10	23.95	Sept. 19	19.59

#### Rosebud County

A-12-44-18dd. Rosebud County School Board. Drilled unused artesian well in Fort Union Formation, depth 141 feet, cased with pipe. MP bottom of square hole in pump, 1.80 feet above lsd. Records available: 1965-67.

Date	Water level	Date	Water level
A-12-44-18dd--Continued			
May 14, 1965	124.92	Mar. 22, 1967	118.13
May 24, 1966	121.68	June 22	120.16
Sept. 13	122.05	Aug. 9	121.67
Nov. 18	122.06		

D-2-41-31ac. Owner unknown. Drilled unused domestic artesian well in Fort Union Formation, depth 168.0 feet, diameter 6 inches, cased with pipe. MP top of casing, 0.5 foot above lsd. Records available: 1967.

Mar. 20, 1967	70.80	Aug. 24, 1967	70.94
June 20	70.76		
Aug. 14	72.38		

#### Sanders County

B-21-24-1cc. Wayne Watts. Drilled unused artesian well in deposits of Pleistocene age, diameter 4 inches, depth 185 feet, cased with pipe. MP top of casing, 1.4 feet above lsd. Records available: 1967. May 17, 1967, 1.40; Aug. 17, 5.18.

B-23-24-27cb. Harold Pedersen. Drilled unused artesian well in deposits of Pleistocene age, diameter 4 inches, depth unknown, cased with pipe. MP hole in pump base, 0.2 foot above lsd. Records available: 1967. May 18, 1967, 21.60; Aug. 17, 25.28.

#### Stillwater County

D-2-23-29bd. Alvin Southworth. Drilled domestic water-table well in alluvium, diameter 6 inches, depth 24 feet, cased with steel pipe. MP top of casing, 0.25 foot above lsd. Highest water level 2.73 below lsd, Sept. 23, 1949; lowest 12.93 below lsd, June 20, 1957. Records available: 1947-67.

Jan. 14, 1961	8.56	Feb. 24, 1964	10.12
Feb. 11	9.52	Mar. 26	11.01
Mar. 11	10.31	Apr. 27	11.73
Mar. 27	10.75	May 25	12.19
Apr. 9	10.93	June 14	12.23
May 10	10.64	June 30	10.11
June 5	9.52	July 27	7.22
July 13	5.63	Aug. 24	5.76
Aug. 28	4.05	Sept. 24	4.67
Sept. 26	3.80	Oct. 27	5.57
Nov. 2	5.83	Nov. 22	6.92
Nov. 27	7.22	Dec. 28	8.19
Mar. 27, 1962	10.91	Jan. 20, 1965	9.02
Apr. 27	11.67	Feb. 18	9.99
May 31	10.74	Mar. 30	11.25
June 25	10.30	Apr. 29	11.81
Aug. 2	6.51	May 26	12.00
Aug. 31	5.85	June 28	10.73
Sept. 24	6.09	July 29	7.38
Nov. 2	6.66	Aug. 23	5.79
Dec. 26	8.64	Sept. 20	6.25
Mar. 1, 1963	10.75	Oct. 18	6.90
Mar. 26	11.93	Oct. 21	6.98
May 27	11.55	Nov. 16	7.65
June 24	9.59	Jan. 20, 1966	10.03
Aug. 1	6.08	Feb. 23	11.23
Sept. 24	4.60	Mar. 25	11.85
Oct. 31	5.35	Apr. 21	12.51
Dec. 27	8.00	May 25	12.45
Jan. 27, 1964	9.22	June 30	9.17

Date	Water level	Date	Water level
D-2-23-29bd--Continued			
July 25, 1966	6.14	Mar. 23, 1967	10.89
Aug. 24	4.21	May 26	11.87
Sept. 26	4.92	July 26	7.93
Oct. 24	5.81	Aug. 17	5.50
Nov. 28	7.06	Sept. 22	5.26

Sweet Grass County

A-4-14-14ba. Spike Van Cleave. Dug domestic water-table well in alluvium, diameter 30 inches, depth 16 feet, cribbed with stone. MP top of plank curb, 2.0 feet above lsd prior to Apr. 1965; top of concrete curb, 1.2 feet above lsd from Apr. 1965 to Apr. 1966; top of new cover, 2.0 feet above lsd after Apr. 1966. Highest water level 3.58 below lsd, June 13 and July 28, 1964; lowest 15.19 below lsd, Mar. 28, 1962. Records available: 1947-67.

Feb. 2, 1961	14.76	June 28, 1964	4.87
Mar. 2	14.63	July 28	3.58
Mar. 28	12.74	Aug. 25	6.00
Apr. 28	12.51	Sept. 27	11.15
May 25	11.45	Oct. 23	10.48
June 27	7.26	Nov. 22	13.12
July 26	9.41	Dec. 23	13.69
Aug. 29	10.52	Jan. 20, 1965	13.84
Sept. 27	10.44	Feb. 17	14.23
Nov. 1	10.53	Mar. 31	14.46
Jan. 5, 1962	13.56	Apr. 13	11.56
Feb. 2	13.63	May 13	10.19
Mar. 1	14.11	June 28	6.50
Mar. 28	15.19	July 29	8.65
Apr. 25	14.06	Aug. 24	6.02
May 30	4.77	Sept. 20	8.77
June 26	10.02	Oct. 18	9.69
Aug. 1	6.03	Nov. 17	12.85
Aug. 30	9.56	Dec. 23	13.58
Sept. 25	12.28	Jan. 19, 1966	14.05
Nov. 1	13.62	Feb. 25	14.56
Nov. 28	12.94	Mar. 25	14.54
Dec. 27	13.58	Apr. 21	13.37
Mar. 1, 1963	14.22	May 25	9.70
Mar. 27	14.47	June 28	7.29
May 28	13.94	July 25	6.59
June 25	4.26	Aug. 24	11.23
July 31	5.41	Sept. 26	8.87
Sept. 25	10.44	Oct. 25	11.45
Oct. 31	12.78	Nov. 30	13.53
Nov. 27	10.61	Jan. 4, 1967	13.43
Dec. 30	13.51	Jan. 26	13.99
Jan. 30, 1964	14.06	Mar. 10	14.40
Feb. 27	14.36	Apr. 14	13.65
Mar. 26	14.53	May 17	9.65
Apr. 28	14.13	July 26	4.64
May 26	5.87	Aug. 28	9.63
June 13	3.58		

Toole County

B-36-2-8cc. Cloyd Hannon. Dug domestic and stock water-table well in deposits of Pleistocene age, diameter 4 feet, depth 17 feet, cribbed with wood, 1 1/4-inch pipe driven inside dug well. MP top of 1 1/4-inch pipe, 1.00 foot above lsd. Highest water level 1.22 below lsd, May 16, 1967; lowest 10.89 below lsd, Dec. 18, 1961. Records available: 1947-67.

Date	Water level	Date	Water level
B-36-2-8cc--Continued			
Jan. 17, 1961	9.21	June 8, 1964	3.46
Feb. 27	9.26	July 19	4.80
Apr. 20	9.28	Sept. 19	7.45
June 19	8.56	Nov. 19	8.29
Aug. 19	9.73	Jan. 12, 1965	8.80
Sept. 22	10.21	Feb. 20	6.22
Oct. 21	10.51	Apr. 1	3.80
Dec. 18	10.89	June 12	3.52
Feb. 16, 1962	7.59	July 17	2.21
May 19	5.56	Sept. 3	4.84
July 14	6.07	Oct. 22	5.43
Sept. 15	8.06	Nov. 1	5.52
Oct. 4	8.46	Dec. 14	5.87
Nov. 16	9.08	Feb. 15, 1966	7.09
Jan. 15, 1963	9.56	Apr. 1	6.66
Feb. 6	8.35	May 20	3.82
Apr. 19	5.54	July 27	3.19
June 16	7.23	Sept. 28	6.46
Aug. 12	6.09	Nov. 14	6.80
Aug. 28	6.53	Feb. 16, 1967	2.95
Oct. 18	7.74	Apr. 12	2.08
Nov. 22	8.35	Apr. 26	2.04
Dec. 16	8.67	May 16	1.22
Feb. 10, 1964	9.01	June 12	1.74
Apr. 24	5.11	Aug. 20	6.40
May 6	2.17	Sept. 13	7.39
May 11	2.33		

Valley County

A-26-43-3cb. U. S. Geol. Survey. Drilled observation water-table well in alluvial flood plain, diameter 1 inch, depth 15.5 feet, cased with plastic pipe. MP top of pipe, 1.5 feet above lsd. Records available: 1966-67.

Nov. 19, 1966	12.57	Aug. 29, 1967	13.26
Mar. 23, 1967	(a)		
June 22	10.52		

a Unable to measure

A-26-45-8dd. U. S. Geol. Survey. Drilled observation water-table well in alluvium, diameter 3/4 inch, depth 42.0 feet, cased with pipe. MP top of casing, 0.7 foot above lsd and 2,012.8 feet above msl. Highest water level 6.91 below lsd, May 24, 1966; lowest 15.10 below lsd, July 20, 1962. Records available: 1962-67.

July 20, 1962	15.10	June 10, 1965	8.79
July 25	9.79	Aug. 17	9.47
Aug. 25	9.79	Nov. 12	9.37
Aug. 29	9.74	Mar. 30, 1966	8.94
Sept. 21	9.78	May 24	6.91
Oct. 31	10.45	Aug. 4	8.50
Mar. 29, 1963	10.19	Nov. 18	9.41
July 4	11.07	Mar. 22, 1967	(a)
Nov. 19	11.10	June 22	8.28
Jan. 20, 1964	10.41	Aug. 28	8.49
Oct. 10	9.82		

a Unable to measure

Date	Water level	Date	Water level
A-27-42-26aa. U. S. Geol. Survey. Drilled observation water-table well in alluvial flood plain, diameter 1 inch, depth 27.2 feet, cased with plastic pipe. MP top of pipe, 2.1 feet above lsd. Records available: 1966-67.			
Sept. 28, 1966	25.64	June 22, 1967	15.08
Nov. 19	20.14	Aug. 29	13.55
Mar. 23, 1967	17.01		

A-27-42-33aa. U. S. Geol. Survey. Drilled observation water-table well in alluvial flood plain, diameter 1 inch, depth 33.0 feet, cased with plastic pipe. MP top of pipe, 3.0 feet above lsd until June 27, 1967; 1.5 foot above lsd after June 27, 1967. Records available: 1966-67.

Oct. 6, 1966	17.84	June 22, 1967	15.91
Nov. 19	17.55	Aug. 29	16.94
Mar. 23, 1967	(a)		

a Unable to measure

A-27-42-36cc. U. S. Geol. Survey. Drilled observation water-table well in alluvial flood plain, diameter 1 1/4 inches, depth 30.0 feet, cased with pipe. MP top of pipe, 3.3 feet above lsd. Records available: 1966-67.

Sept. 30, 1966	18.87	June 22, 1967	17.28
Nov. 19	18.34	Aug. 29	17.60
Mar. 23, 1967	17.90		

A-27-43-32bb. U. S. Geol. Survey. Drilled observation water-table well in alluvial flood plain, diameter 1 inch, depth 30.0 feet, cased with plastic pipe. MP top of pipe, 3.2 feet above lsd. Records available: 1966-67.

Oct. 6, 1966	24.47	June 22, 1967	24.96
Nov. 19	15.34	Aug. 29	24.92
Mar. 23, 1967	(a)		

a Unable to measure

A-27-45-31dd. U. S. Geol. Survey. Drilled observation water-table well in alluvium, diameter 3/4 inch, depth 30.1 feet, cased with pipe. MP top of casing, 2.90 feet above lsd and 2,030.3 feet above msl. Highest water level 12.03 below lsd, Aug. 21, 1962; lowest 18.16 below lsd, Mar. 29, 1963. Records available: 1962-67.

Aug. 21, 1962	12.03	Aug. 17, 1965	17.55
Aug. 24	14.49	Nov. 12	17.59
Aug. 29	15.20	Mar. 30, 1966	18.00
Sept. 21	15.55	May 24	18.11
Oct. 31	14.37	Aug. 4	17.20
Mar. 29, 1963	18.16	Nov. 18	16.33
July 4	17.25	Mar. 22, 1967	17.57
Nov. 19	16.54	June 22	16.67
Jan. 20, 1964	17.54	Aug. 28	*
Oct. 10	17.85		
June 10	17.61		

\* Plugged at 11.8

A-27-45-34dd. U. S. Geol. Survey. Drilled observation water-table well in alluvium, diameter 3/4 inch, depth 23.4 feet, cased with plastic pipe. MP top of casing, 0.6 foot above lsd and 2,015.7 feet above msl. Highest water level 10.36 below lsd, Aug. 29, 1962; lowest 13.47 below lsd, Jan. 20, 1964. Records available: 1962-67.

A-27-45-34dd--Continued

Aug. 13, 1962	12.89	June 10, 1965	12.69
Aug. 17	10.87	Aug. 17	12.53
Aug. 25	10.37	Nov. 13	12.10
Aug. 29	10.36	Mar. 30, 1966	12.26
Sept. 21	10.66	May 25	12.42
Nov. 1	11.24	Aug. 4	11.75
Mar. 29, 1963	12.69	Nov. 18	12.08
July 4	13.37	Mar. 22, 1967	12.23
Nov. 19	13.25	June 22	12.02
Jan. 20, 1964	13.47	Aug. 28	10.63
Oct. 10	12.77		

A-34-40-1aa. Owner unknown. Dug domestic and stock water-table well in glacial moraine, diameter 24 inches, depth unknown, cased with wood. MP top of board cover at lsd. Records available: 1965-67.

June 2, 1965	26.58	June 23, 1967	25.15
May 25, 1966	26.18	Aug. 29	25.41
Sept. 13	26.12		
Mar. 23, 1967	24.92		

Wibaux County

A-11-57-17abl. Union Texas Petroleum. Drilled unused artesian well in Fox Hills Sandstone and Hell Creek Formation, diameter 8 inches, depth 1,100 feet, cased with pipe. MP top of casing, 0.80 foot above lsd and 2,634 feet above msl. Highest water level 81.65 below lsd, Nov. 17, 1966 and May 27, 1965; lowest 82.80 below lsd, June 24, 1963. Records available: 1962-67.

Oct. 12, 1962	82.71	May 27, 1965	81.73
Nov. 21	82.70	July 12	82.08
Dec. 13	82.49	Aug. 31	82.13
Mar. 26, 1963	82.17	Oct. 27	82.20
June 24	82.80	May 5, 1966	82.35
July 25	82.59	July 7	82.34
Aug. 27	82.65	Sept. 13	81.85
Oct. 1	82.77	Nov. 17	81.65
Mar. 17, 1964	82.48	Mar. 21, 1967	81.80
July 14	81.75	June 21	81.90
Aug. 24	82.47	Aug. 15	81.78
Nov. 6	81.73		

Yellowstone County

D-1-26-9bb. U. S. Geol. Survey. Augered observation water-table well in terrace deposits, diameter 3/4 inch, depth 15 feet, cased with steel pipe. MP top of casing, 0.90 foot above lsd and 3,147.9 feet above msl. Highest water level 10.48 below lsd, May 23, 1962; lowest 13.43 below lsd, Mar. 13, 1963. Records available: 1962-67.

May 11, 1962	11.33	Dec. 13, 1962	13.29
May 23	10.48	Dec. 20	13.31
June 8	10.92	Jan. 21, 1963	13.38
June 25	11.28	Feb. 8	13.18
July 9	10.73	Feb. 27	13.40
July 25	10.97	Mar. 13	13.43
Aug. 8	11.22	Mar. 22	13.33
Aug. 24	11.49	Apr. 8	13.34
Sept. 7	12.20	Apr. 23	13.34
Sept. 26	12.62	May 8	13.23
Oct. 8	12.74	May 23	12.79
Oct. 26	12.90	June 7	12.54
Nov. 7	13.02	June 24	12.55
Nov. 26	13.19	July 8	12.57

Date	Water level	Date	Water level	Date	Water level	Date	Water level
D-1-26-9bb--Continued							
July 25, 1963	11.91	June 22, 1964	11.30	May 17, 1965	13.19	Nov. 12, 1965	12.55
Aug. 16	11.69	July 7	11.54	May 24	12.81	Nov. 15	12.64
Aug. 23	11.58	July 23	11.71	June 2	12.82	Nov. 23	12.70
Sept. 11	11.90	Aug. 9	11.69	June 7	12.75	Nov. 29	12.67
Sept. 23	12.10	Aug. 24	11.68	June 14	12.54	Dec. 8	11.30
Oct. 7	12.40	Sept. 25	11.98	June 21	12.54	Dec. 17	12.83
Oct. 22	12.48	Oct. 26	12.30	July 12	12.34	Dec. 30	12.92
Nov. 7	12.42	Nov. 23	12.57	July 19	12.18	Jan. 11, 1966	12.99
Nov. 21	12.62	Dec. 28	12.80	July 26	12.02	Jan. 27	13.08
Dec. 5	12.78	Jan. 21, 1965	12.83	Aug. 2	11.92	Feb. 7	13.13
Dec. 24	12.94	Feb. 23	13.10	Aug. 10	11.82	Feb. 21	13.22
Jan. 6, 1964	12.98	Mar. 1	12.58	Aug. 16	11.93	Mar. 28	13.24
Jan. 20	13.06	Mar. 8	13.14	Aug. 26	11.30	May 31	12.39
Feb. 10	13.17	Mar. 15	13.20	Aug. 27	11.37	July 15	11.57
Feb. 24	13.22	Mar. 22	13.23	Aug. 31	11.59	Sept. 23	11.76
Mar. 9	13.27	Mar. 29	13.25	Sept. 7	11.52	Nov. 29	12.80
Mar. 23	13.32	Apr. 5	13.25	Sept. 20	11.62	Dec. 29	12.90
Apr. 6	13.16	Apr. 26	13.25	Sept. 27	11.37	July 27, 1967	12.22
Apr. 20	11.93	May 3	13.26	Oct. 16	12.33	Aug. 30	11.88
May 11	11.77	May 5	13.29	Oct. 27	12.46	Sept. 22	12.01
May 23	12.27	May 7	12.34	Nov. 1	12.49		
June 8	12.07	May 10	13.08				

## REFERENCES CITED

1. Brietkrietz, Alex, 1964, Basic water data report no. 1, Missoula Valley, Montana: Montana Bur. Mines and Geology Bull. 37, 43 p.
2. \_\_\_\_\_ 1966, Basic water data report no. 3, Kalispell Valley, Montana: Montana Bur. Mines and Geology Bull. 53, 25 p.
3. Cady, R. C., 1941, Effect upon ground-water levels of proposed surface water storage in Flathead Lake, Montana: U.S. Geol. Survey Water-Supply Paper 849-B, p. 59-81.
4. Hackett, O. M., Visher, F. N., McMurtrey, R. G., and Steinhilber, W. L., 1960, Geology and ground-water resources of the Gallatin Valley, Gallatin County, Montana, with a section on Surface-water resources, by Frank Stermitz and F. C. Boner, and a section on Chemical quality of water, by R. A. Krieger: U.S. Geol. Survey Water-Supply Paper 1482, 282 p.
5. Hopkins, W. B., 1967, Waterlogging and drainage problems on the Big Horn unit, Big Horn County, Montana: U.S. Geol. Survey adm. report, 70 p.
6. Hopkins, W. B., and Taylor, O. J., 1962, Drainage and domestic water-supply investigations in the Milk River unit, Blaine County, Montana: U.S. Geol. Survey open-file report, 112 p.
7. \_\_\_\_\_ 1964, Factors affecting drainage in the Frazer-Wolf Point irrigation unit, Montana: U.S. Geol. Survey adm. report, 64 p.
8. Lorenz, H. W., and Swenson, F. A., 1951, Geology and ground-water resources of the Helena Valley, Montana, with a section on The chemical quality of the water, by H. A. Swenson: U.S. Geol. Survey Circ. 83, 68 p.
9. Lorenz, H. W., and McMurtrey, R. G., 1956, Geology and occurrence of ground water in the Townsend Valley, Montana, with a section on Chemical quality of the ground water, by H. A. Swenson: U.S. Geol. Survey Water-Supply Paper 1360-C, p. 171-290.
10. McDonald, C. C., 1946, Effects of storage in Flathead Lake, Montana, on ground-water levels: U.S. Geol. Survey open-file report, 7 p.
11. McMurtrey, R. G., and Konizeski, R. L., 1956, Progress report on the geology and ground-water resources of the eastern part of the Bitterroot Valley, Montana: Montana Bur. Mines and Geology Inf. Circ. 16, 28 p.
12. Moulder, E. A., and Kohout, F. A., 1958, Ground-water factors affecting drainage in the first division, Buffalo Rapids irrigation project, Prairie and Dawson Counties, Montana, with a section on Chemical quality of the water, by E. R. Jochens: U.S. Geol. Survey Water-Supply Paper 1424, 198 p.
13. Moulder, E. A., Klug, M. F., Morris, D. A., and Swenson, F. A., 1960, Geology and ground-water resources of the lower Little Bighorn River valley, Big Horn County, Montana, with special reference to the drainage of waterlogged lands, with a section on Chemical quality of the water, by R. A. Krieger: U.S. Geol. Survey Water-Supply Paper 1487, 223 p.



14. Paulson, Q. F., and Zimmerman, T. V., 1965, Geology and ground-water resources of the Two Medicine irrigation unit and adjacent areas, Blackfeet Indian Reservation, Montana: U.S. Geol. Survey open-file report, 123 p.
15. Swenson, F. A., 1955, Geology and ground-water resources of the Missouri River valley in northeastern Montana, with a section on The quality of the ground water, by W. H. Durum: U.S. Geol. Survey Water-Supply Paper 1263, 128 p.
16. \_\_\_\_\_ 1957, Geology and ground-water resources of the lower Marias irrigation project, Montana, with a section on Chemical quality of the ground water, by H. A. Swenson: U.S. Geol. Survey Water-Supply Paper 1460-B, p. 41-98 (1958).
17. Taylor, O. J., 1965, Ground-water resources along Cedar Creek anticline in eastern Montana: Montana Bur. Mines and Geology Mem. 40, 99 p.
18. Torrey, A. E., and Swenson, F. A., 1951, Ground-Water resources of the lower Yellowstone River valley between Miles City and Glendive, Montana, with a section on The chemical quality of the water, by H. A. Swenson: U.S. Geol. Survey Circ. 93, 72 p.
19. Torrey, A. E., and Kohout, F. A., 1956, Geology and ground-water resources of the lower Yellowstone River valley, between Glendive and Sidney, Montana, with a section on Chemical quality of the water, by H. A. Swenson: U.S. Geol. Survey Water-Supply Paper 1355, 92 p.
20. U.S. Geological Survey, Water levels and artesian pressure in observation wells in the United States. Published for each year 1935-41, 1943-44, and 1947-60, incl., as Water-Supply Papers. (See Table 1, p. 2.)
21. Zimmerman, E. A., 1966, Basic water data report no. 2, western and southern parts of Judith Basin, Montana: Montana Bur. Mines and Geology Bull. 50-B, 40 p.
22. \_\_\_\_\_ 1967, Water resources of the Cut Bank area, Glacier and Toole Counties, Montana: Montana Bur. Mines and Geology Bull. 60, 37 p.