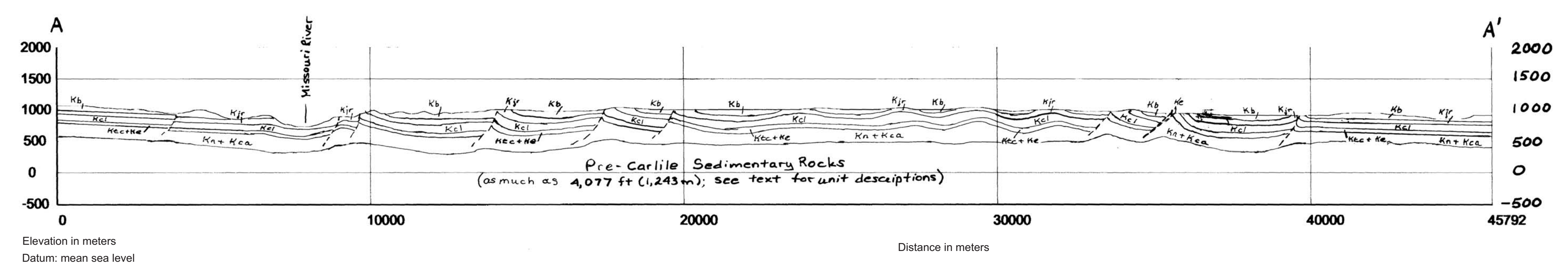


- MAP UNITS**
- Qal Alluvium of modern channels and flood plains
 - Qat Alluvium of alluvial terrace deposit
 - Qao Alluvium, older, undivided
 - Og Glacial deposits, undivided
 - Ol₁ Landslide deposit
 - T₁ Felsic volcanic rocks
 - T₂ Felsic pyroclastic rocks
 - T₃ Mafic volcanic rocks
 - T₄ Mafic pyroclastic rocks
 - T₅ Latite and porphyritic latite
 - T₆ Shonkile and syenite
 - T₇ Wasatch Formation
 - T₈ Fort Union Formation, undivided
 - T₉ Tullock Member of Fort Union Formation
 - K₁₀ Hill Creek Formation
 - K₁₁ Fox Hills Formation
 - K₁₂ Hill Creek Formation and Fox Hills Formation, undivided
 - K₁₃ Bearpaw Shale
 - K₁₄ Judith River Formation
 - K₁₅ Chagitt Shale
 - K₁₆ Eagle Formation
 - K₁₇ Telegraph Creek Formation
 - K₁₈ Kevin Member of Malpais River Formation
- Extent of glaciation

Cross Section A-A'
Vertical exaggeration x2.0



Unit thickness, meters (ft/3.28)

K ₁₈	1,300'	only lower part exposed
K ₁₇	380'	116 m
K ₁₆	500'	152 m
K ₁₅ + K ₁₆	450'	137 m
K ₁₄ + K ₁₅	630'	192 m

See text for unit names and descriptions
Surficial deposits not shown

Montana Bureau of Mines and Geology
Open File No. 437

**Geologic Map of the
Winifred 30' x 60' Quadrangle
Central Montana**

Edith M. Wilde and Karen W. Porter

2001

Partial support has been provided by the STATEMAP component of the National Cooperative Geologic Mapping Program of the U.S. Geological Survey under Contract Number 01-HQ-MG-0096.
GIS production: Ken Sandau and Paul Thale, MBMG. Map layout: Susan Smith, MBMG.

