

Montana Bureau of Mines and Geology
Open File No. 460

Geologic Map of the
Fort Benton 30' x 60' Quadrangle,
North- Central Montana

by
Richard B. Berg
and Susan M. Vuke

2002

To view a full scale version of this map, [click here](#).

For the text files with the map information, [click here](#).

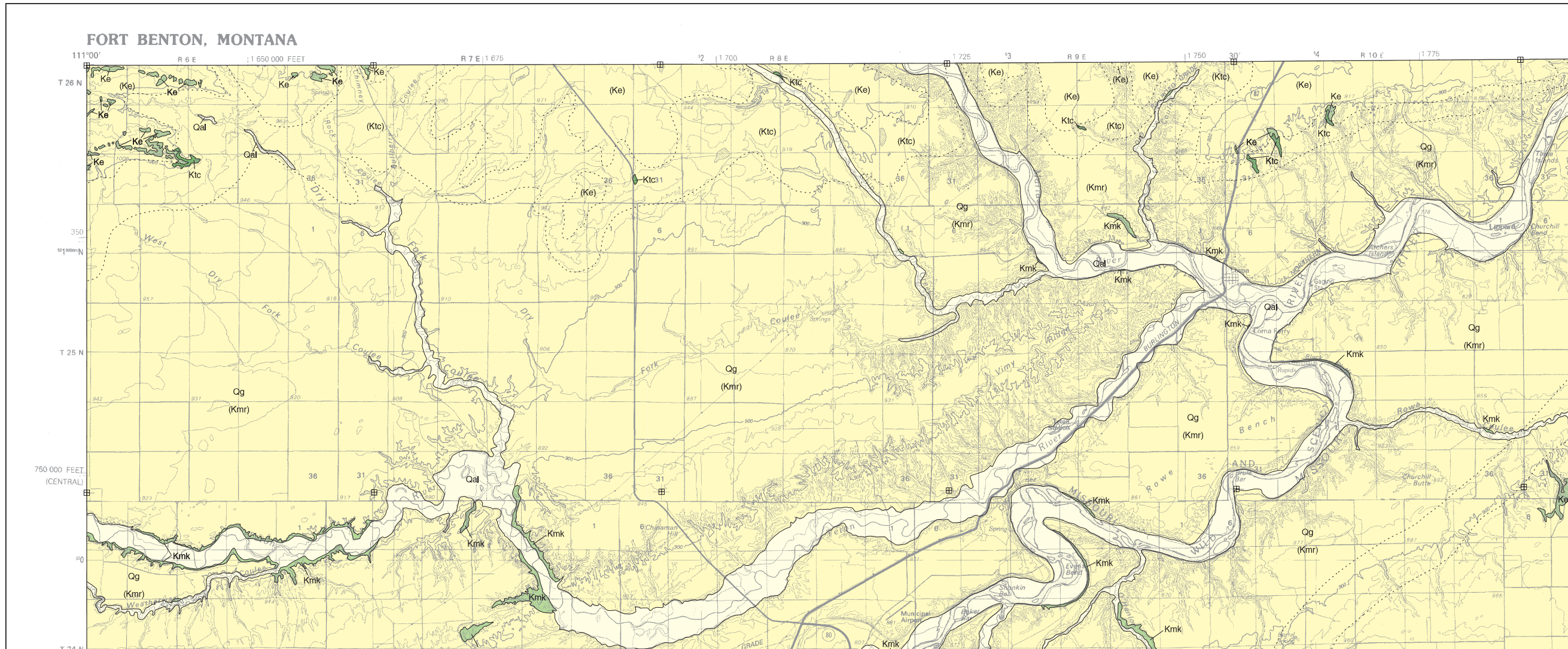
[Digital data link](#)

Note— This map was originally published at a scale of 1;100,000 but the page sizes have been modified to fit average printer capabilities (8½ x 14; legal size paper). There is a an eighth inch overlap on these pages. A full sized colored print of this map can be ordered from the **MBMG Publication Sales Office, 1300 West Park Street, Butte, MT, 59701-8997.**

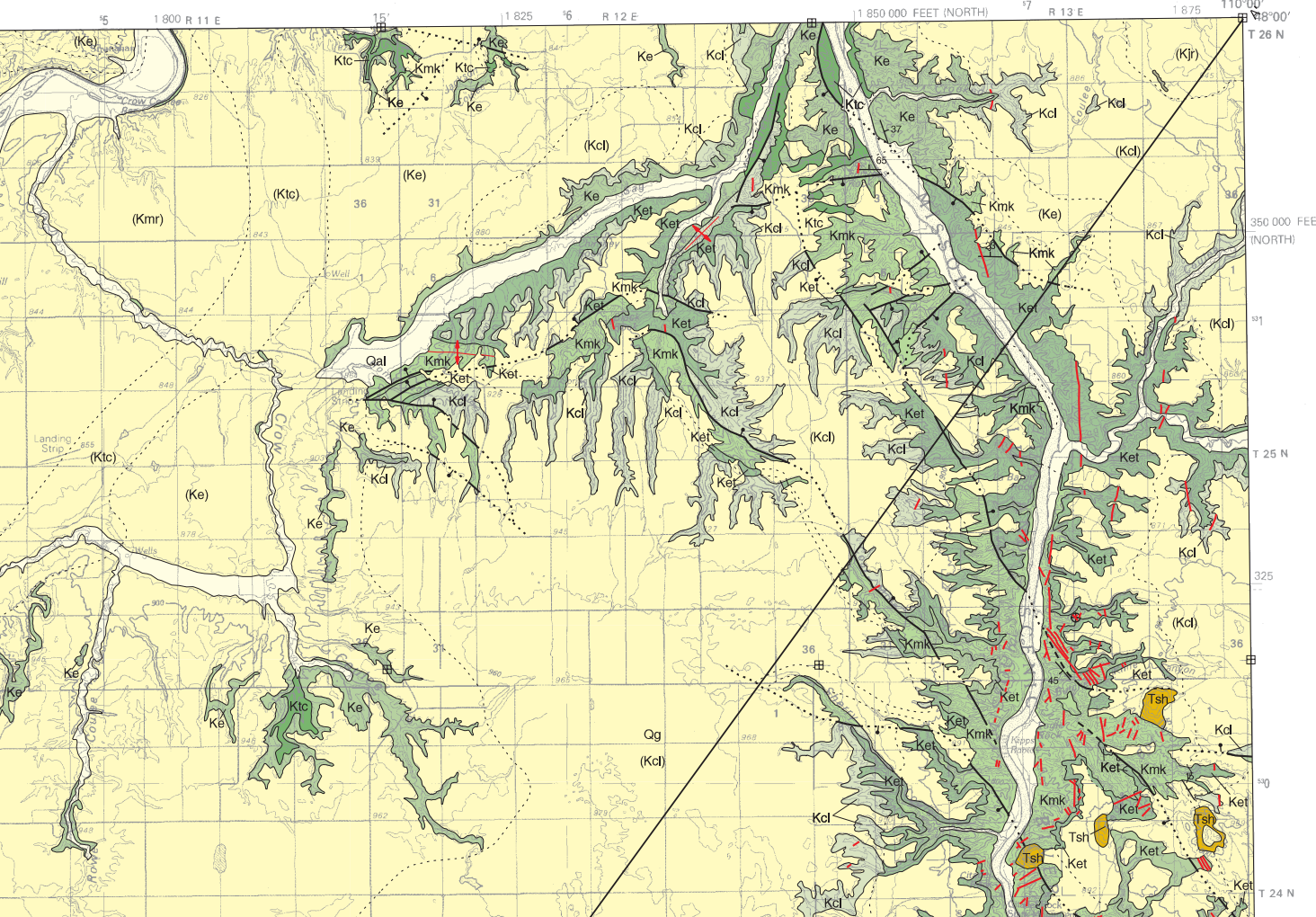
Phone: 406-496-4167

Email: pubsales@mbmg.mtech.edu

Open File MBMG 460, Plate 1 of 1
Geologic Map, Fort Benton 30'x60' Quadrangle

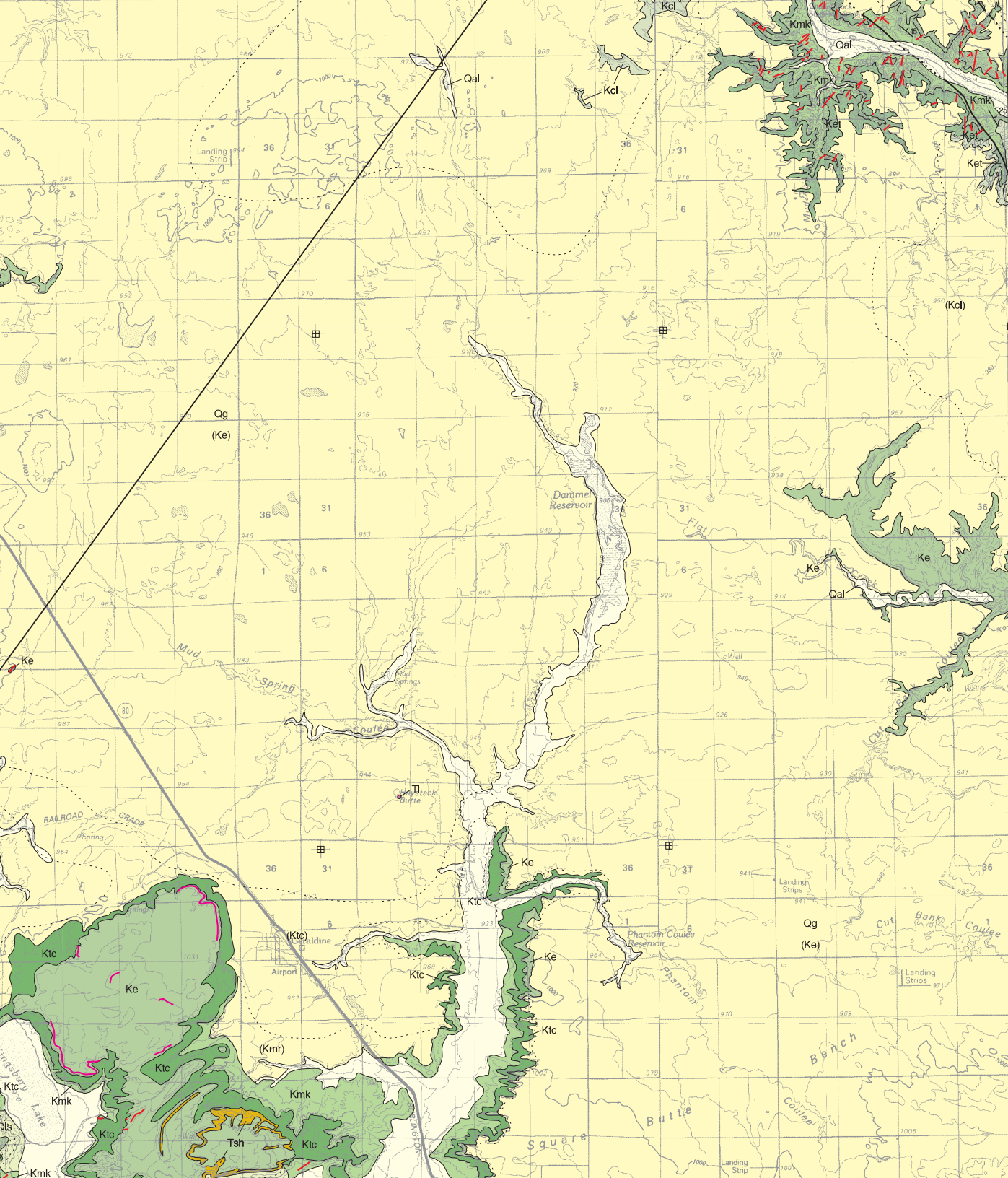


30X60 MINUTE SERIES (TOPOGRAPHIC)



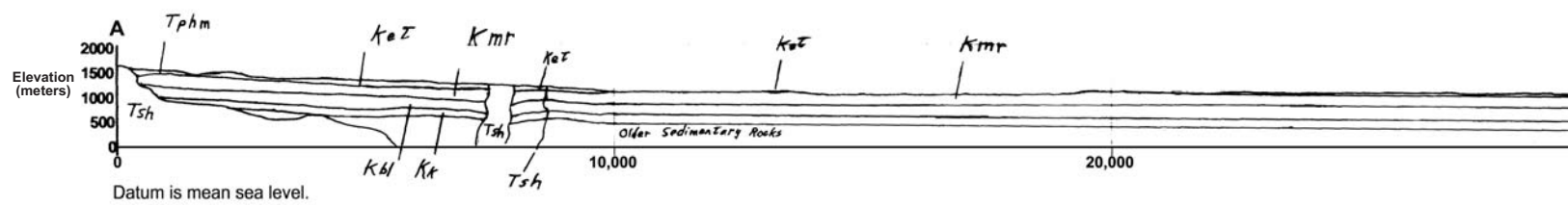
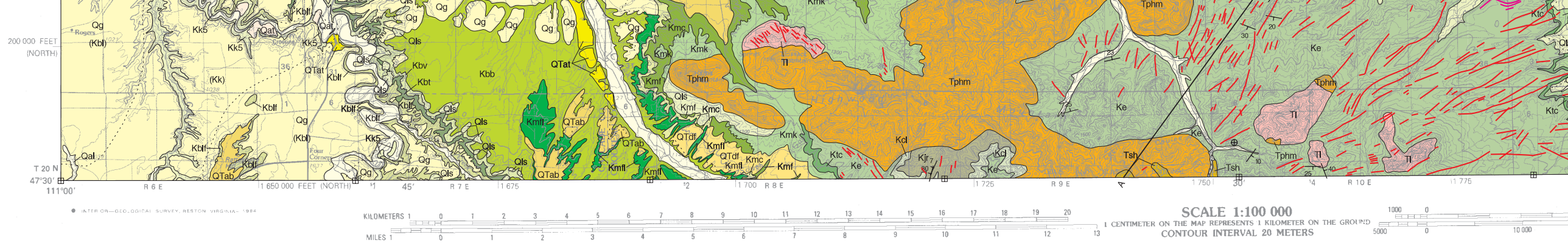
MAP UNITS

Qal	Alluvium of modern channels and flood plains
Qls	Landslide deposit
Qc	Colluvium
Qat	Alluvium of alluvial terrace deposit
Qg	Glacial deposits, undivided
QTab	Gravel
QTat	Alluvium of alluvial terrace deposit
QTdf	Debris flow deposit
Ti	Intrusive rocks, undivided
Tsh	Shonkinitic
Tphm	Phonolite, mafic
TI	Lafite
Kjr	Judith River Formation
Kcl	Claggett Shale
Ke	Eagle Formation
Ket	Eagle and Telegraph Creek Formations, undivided
Ktc	Telegraph Creek Formation
Kmk	Kevin Member of Marias River Formation
Kmf	Ferdig Member of Marias River Formation
Kmc	Cone Member of Marias River Formation
Kmf	Floweree Member of Marias River Formation



- Kml Howeree Member of Marias River Formation
- Kbb Bootlegger Member of Blackleaf Formation
- Kbv Vaughn Member of Blackleaf Formation
- Kbt Taft Hill Member of Blackleaf Formation
- Kblf Flood Member of Blackleaf Formation
- Kk5 Kootenai Formation, member 5, informal
- Kk4 Kootenai Formation, member 4, informal

300
275
250
225
1000 FEET
(CENTRAL)



The Eagle and T

Montana Bureau of Mines and Geology
Open File No. 460

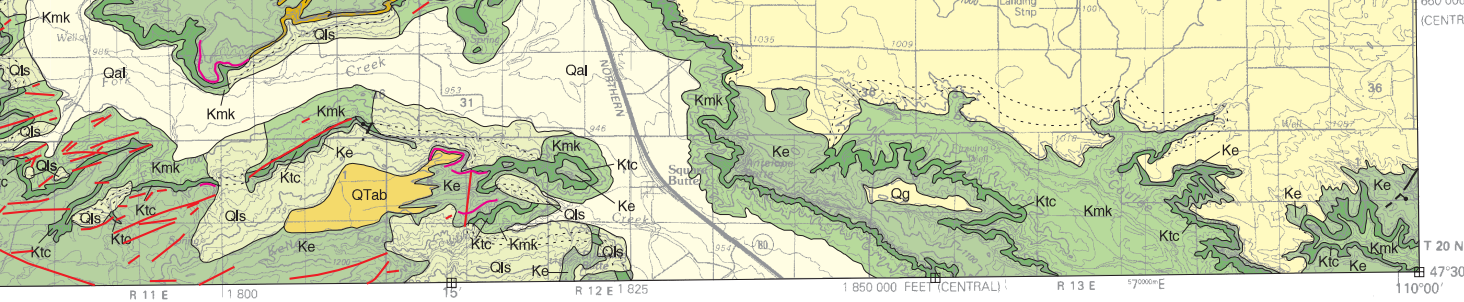
Geologic Map of the Fort Benton 30' x 60' Quadrangle North-central Montana

Richard B. Berg and Susan M. Vuke

2002

Partial support has been provided by
Mapping Program of the U.S. Geolog

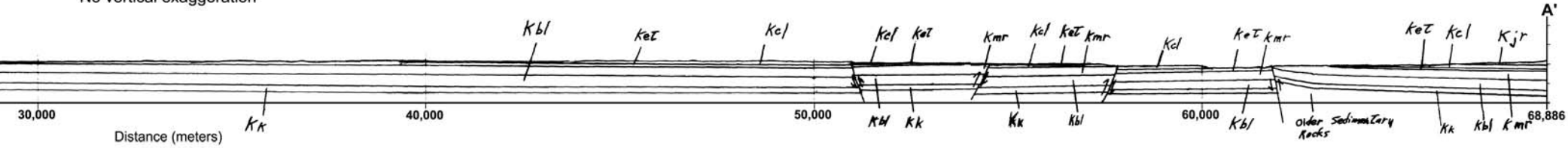
GIS production: Ken Sandau, John D



FORT BENTON, MONTANA
47110-E1-TM-100

1984

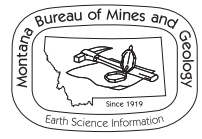
Cross Section A - A'
No vertical exaggeration



For clarity, surficial deposits are not shown.
Telegraph Creek Formations are combined and shown as Ket.

Thicknesses used in cross section

Unit	Feet	Meters
Kjr	500	150
Kcl	475	145
Ket	280	85
Kmr	900	270
Kbl	850	260
Kk	500	150



Maps may be obtained from
Publications Office
Montana Bureau of Mines and Geology
1300 West Park Street, Butte, Montana 59701-8997
Phone: (406) 496-4167 Fax: (406) 496-4451
<http://www.mbm.gmt.mt.gov>

by the STATEMAP component of the National Cooperative Geologic
logical Survey under Contract Number 01-HQ-AG-0096.
n Dillon and Paul Thale, MBMG. Map layout: Susan Smith, MBMG.