

Montana Bureau of Mines and Geology
Open File No. 464

Geologic Map of the Hebgen Lake 30' x 60' Quadrangle
Beaverhead, Madison and Gallatin Counties, Montana
Park and Teton Counties, Wyoming
Clark and Fremont Counties, Idaho

J. Michael O'Neill and Robert L Christiansen

2002

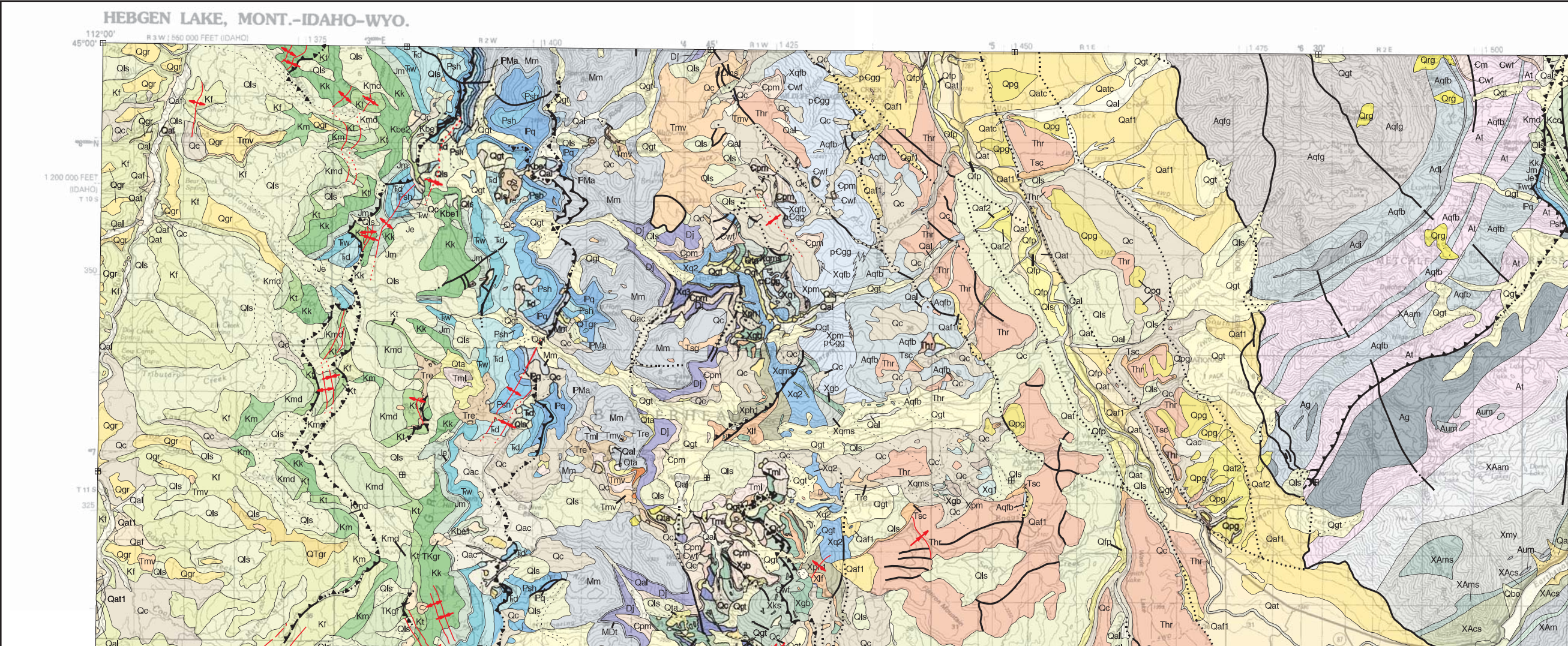
To view a full scale version of this map, [click here](#).

For the text files with the map information, [click here](#).

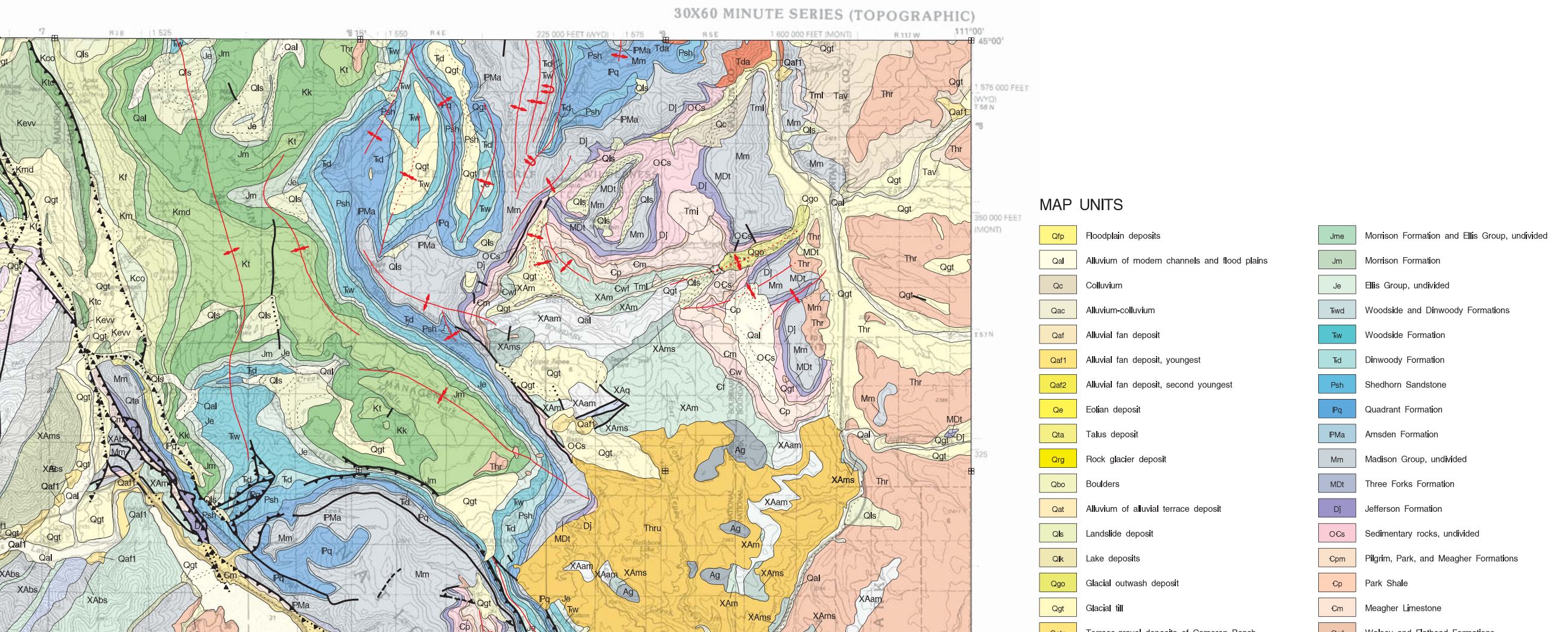
[Digital data link](#)

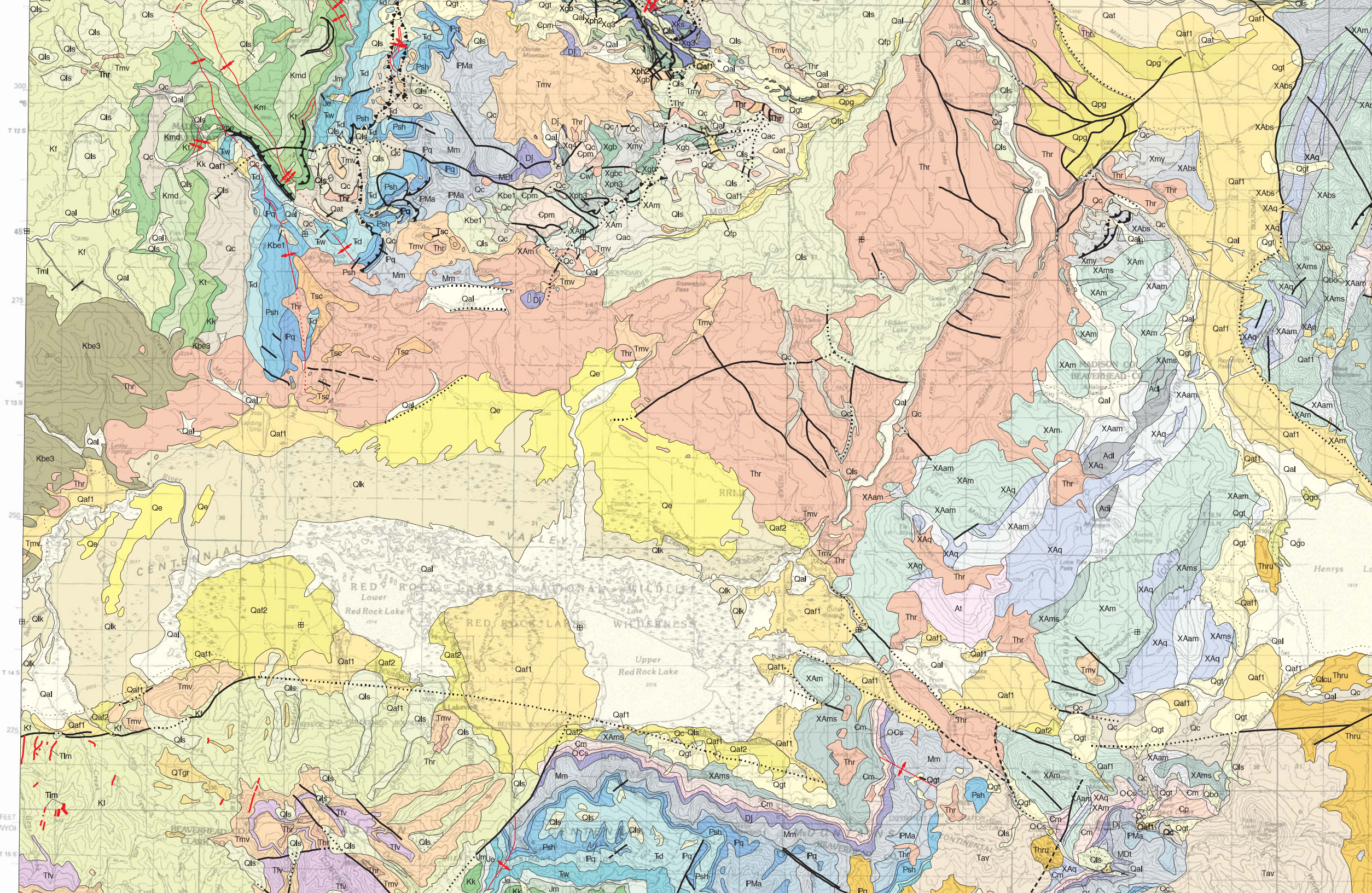
Note — This map was originally published at a scale of 1:100,000 but the page sizes have been modified to fit average printer capabilities (8½ x 14; legal size paper). There is an eighth inch overlap on these pages. A full sized colored print of this map can be ordered from the MBMG Publication Sales Office, 1300 West Park Street, Butte, MT, 59701-8997.

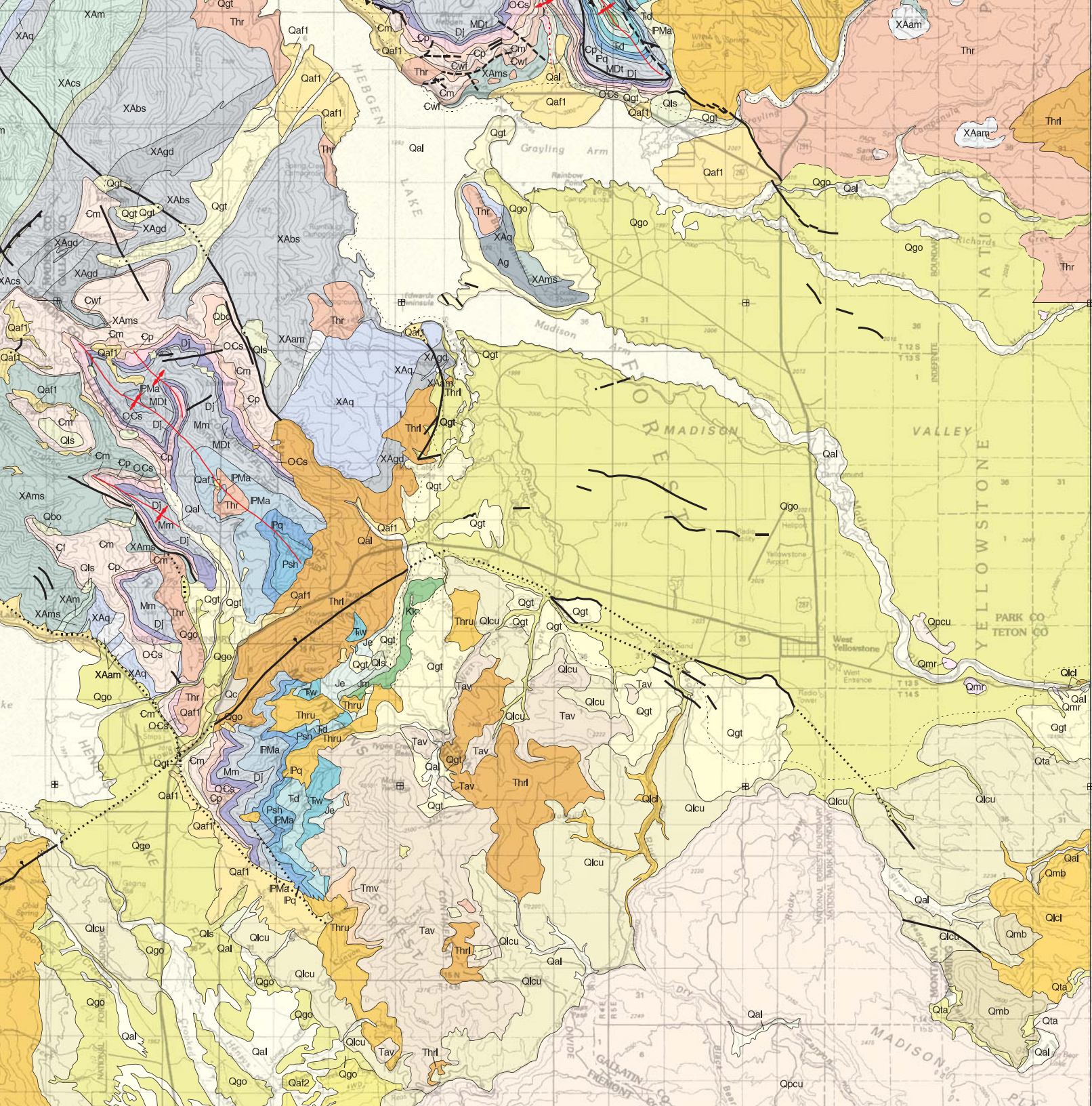
Open File MBMG 464, Plate 1 of 1
Geologic Map, Hebgen Lake 30'x60' Quadrangle



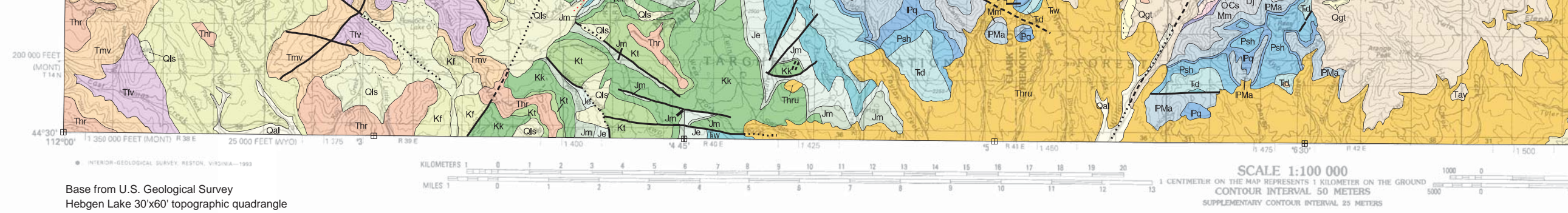
MONTANA BUREAU OF MINES AND GEOLOGY
A Department of Montana Tech of The University of Montana







Qatc	Terrace-gravel deposits of Cameron Bench	Cwf	Wolsey and Flathead Formations
Qpg	Pediment gravel deposits	Cw	Wolsey Shale
Qpcu	Plateau Rhyolite, upper member	Cf	Flathead Formation
Qpcb	Plateau Rhyolite, lower member	Xmy	Mylonite
Qmr	Madison River basalt	pCms	Mylonitic schist
Qlcu	Lava Creek Tuff, upper member	pCgg	Granite gneiss
Qlcl	Plateau Rhyolite, lower member	Xgbc	Chloritized gabbro
Qmb	Mt. Jefferson Rhyolite	Xgb	Gabbro
Qgr	Terrace gravels, youngest	Xq4	Quartzite member 4
QTgr	Terrace gravels, oldest	Xph3	Phyllite member 3
Tsg	Sand and gravel	Xph2	Phyllite member 2
Thr	Huckleberry Ridge Tuff, undivided	Xq3	Quartzite member 3
Thru	Huckleberry Ridge Tuff, upper member	Xks	Knotted mica schist
Thrl	Huckleberry Ridge Tuff, lower member	Xlf	Iron Formation
Tsc	Sixmile Creek Formation	Xph1	Phyllite member 1
Tv	Volcanic rocks, undivided	Xq2	Quartzite member 2
Tmv	Mafic volcanic rocks	Xqms	Quartz-feldspar-biotite gneiss
Tlv	Felsic volcanic rocks	Xq1	Quartzite member 1
Tml	Mafic intrusive rocks	Xqtb	Quartz-feldspar-biotite gneiss
Tav	Absaroka Volcanics	pCgq	Biotite gneiss, quartzite, and hornblende gneiss
Tre	Renova Formation	Xpm	Pegmatitic metasedimentary rocks
Tda	Dacite, intrusive	XAgd	Granodiorite gneiss
TKgr	Gravel and conglomerate of uncertain affinities	XAam	Amphibolite
Kbe1	Beaverhead Group, limestone and conglomerate	XAm	Marble
Kbe2	Beaverhead Group, gravel and sand	XAq	Quartzite
Kbe3	Beaverhead Group, sandstone	XAms	Mica schist
Kevv	Everts Formation and Virgelle Sandstone	XAcs	Chlorite-biotite schist
Ktc	Telegraph Creek Formation	XAbs	Biotite schist and gneiss
Kco	Cody Shale	Aqfg	Quartzofeldspathic gneiss
Kf	Frontier Formation	Aum	Ultramafic rock
Km	Mowry Shale	Ag	Granite gneiss
Kmd	Muddy Formation	Aqtb	Quartz-feldspar-biotite gneiss
Kt	Thermopolis Formation	Adl	Dioritic gneiss
Kk	Kootenai Formation	At	Tonalitic gneiss



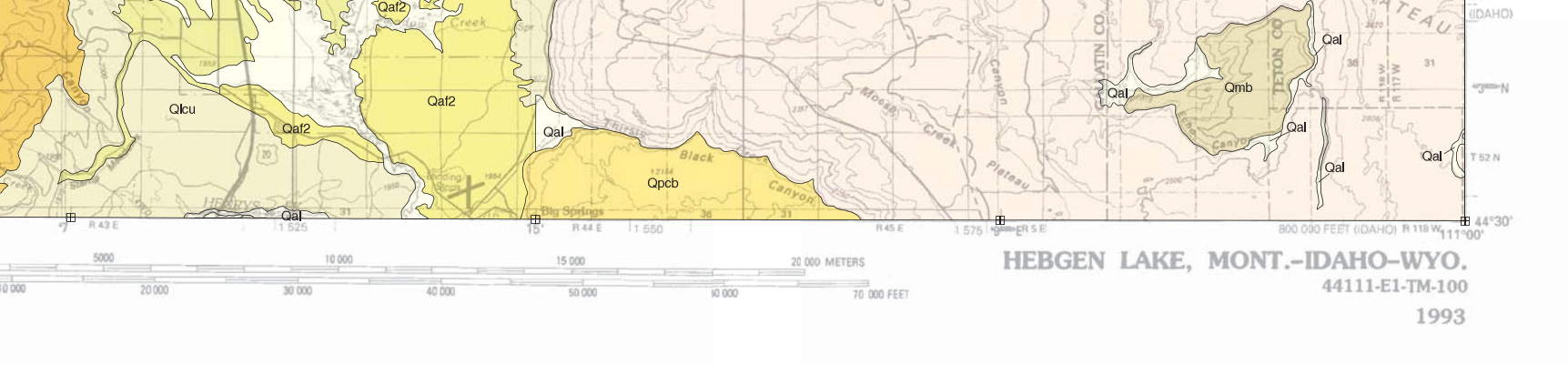
Montana Bureau of Mines and Geology
Open File No. 464

Geologic Map of the
Hebgen Lake 30' x 60' Quadrangle,
Beaverhead, Madison, and Gallatin Counties,
Montana, Park and Teton Counties, Wyoming,
and Clark and Fremont Counties, Idaho

J. Michael O'Neill¹ and Robert L. Christiansen²
2002

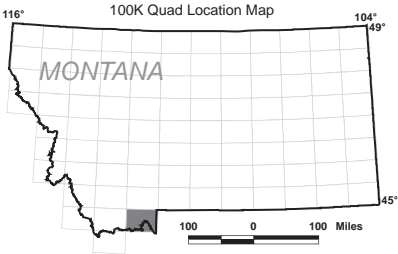
Revised	Date
Map and text	9/03
Map	12/2011

¹ U.S. Geological Survey, P.O. Box 25046, M.S. 96
² U.S. Geological Survey, M.S. 910, 345 Middlefield
 GIS production: Ken Sandau, John Dillon and Paul



Quad index

DILLON	ENNIS	GARDINER
LIMA	HEBGEN LAKE	YELLOW-STONE NAT PARK N
DUBOIS	ASHTON	YELLOW-STONE NAT PARK S



4, Federal Center, Denver, CO 80225
ld Rd., Menlo Park, CA 94025

Thale, MBMG. Map layout: Susan Smith, MBMG.

Maps may be obtained from
Publications Office
Montana Bureau of Mines and Geology
1300 West Park Street, Butte, Montana 59701-8997
Phone: (406) 496-4167 Fax: (406) 496-4451
<http://www.mbm.mtech.edu>