

Montana Bureau of Mines and Geology
Open File No. 465

Geologic Map of the Wibaux 30' x 60' Quadrangle,
Eastern Montana and Adjacent North Dakota

Compiled and mapped by Susan M.Vuke, Edith M. Wilde,
Roger B. Colton, and Michael S. Stickney

2003

To view a full scale version of this map, [click here](#).

For the text files with the map information, [click here](#).

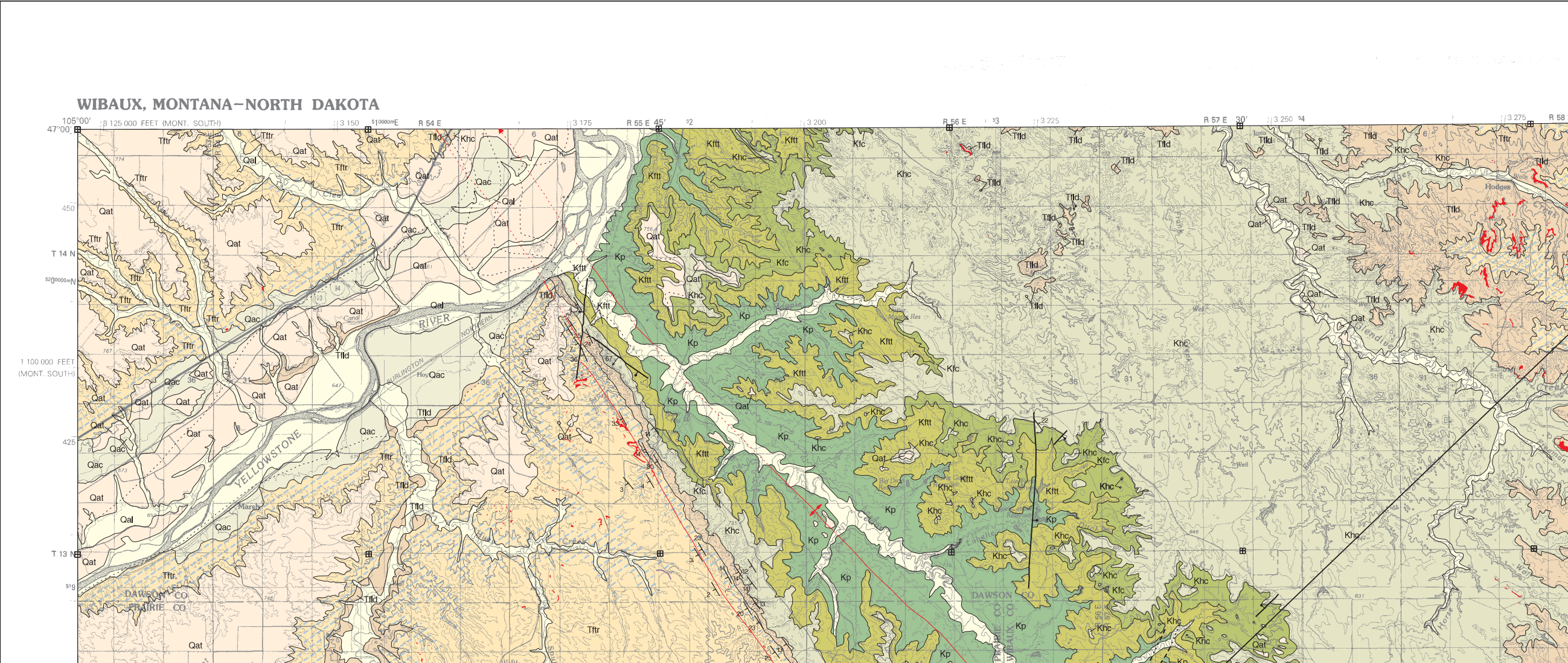
[Digital data link](#)

Note— This map was originally published at a scale of 1;100,000 but the page sizes have been modified to fit average printer capabilities (8½ x 14; legal size paper). There is a an eighth inch overlap on these pages. A full sized colored print of this map can be ordered from the **MBMG Publication Sales Office, 1300 West Park Street, Butte, MT, 59701-8997**.

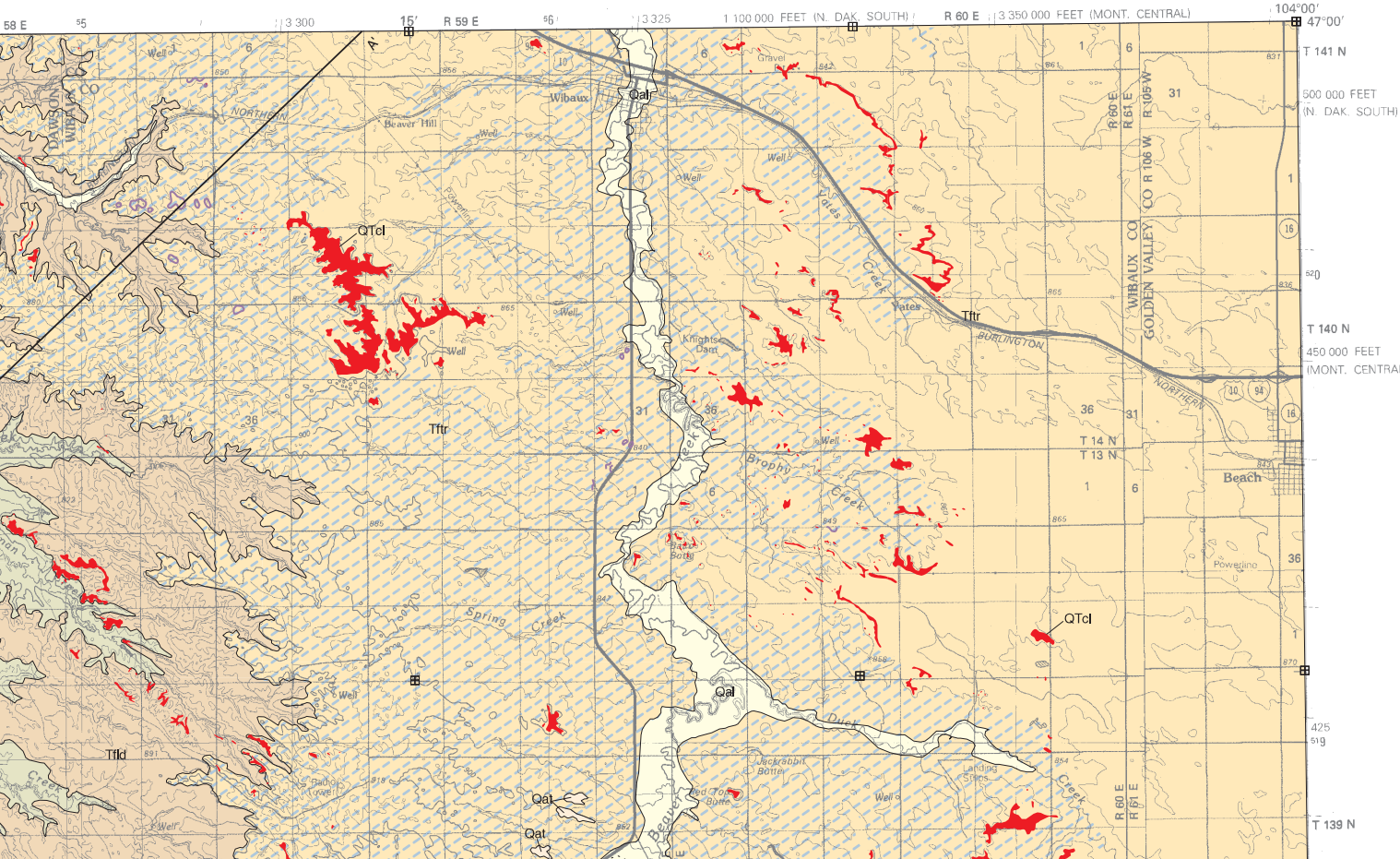
Phone: 406-496-4167

Email: pubsales@mbmg.mtech.edu

Open File MBMG 465, Plate 1 of 1
Geologic Map, Wibaux 30'x60' Quadrangle

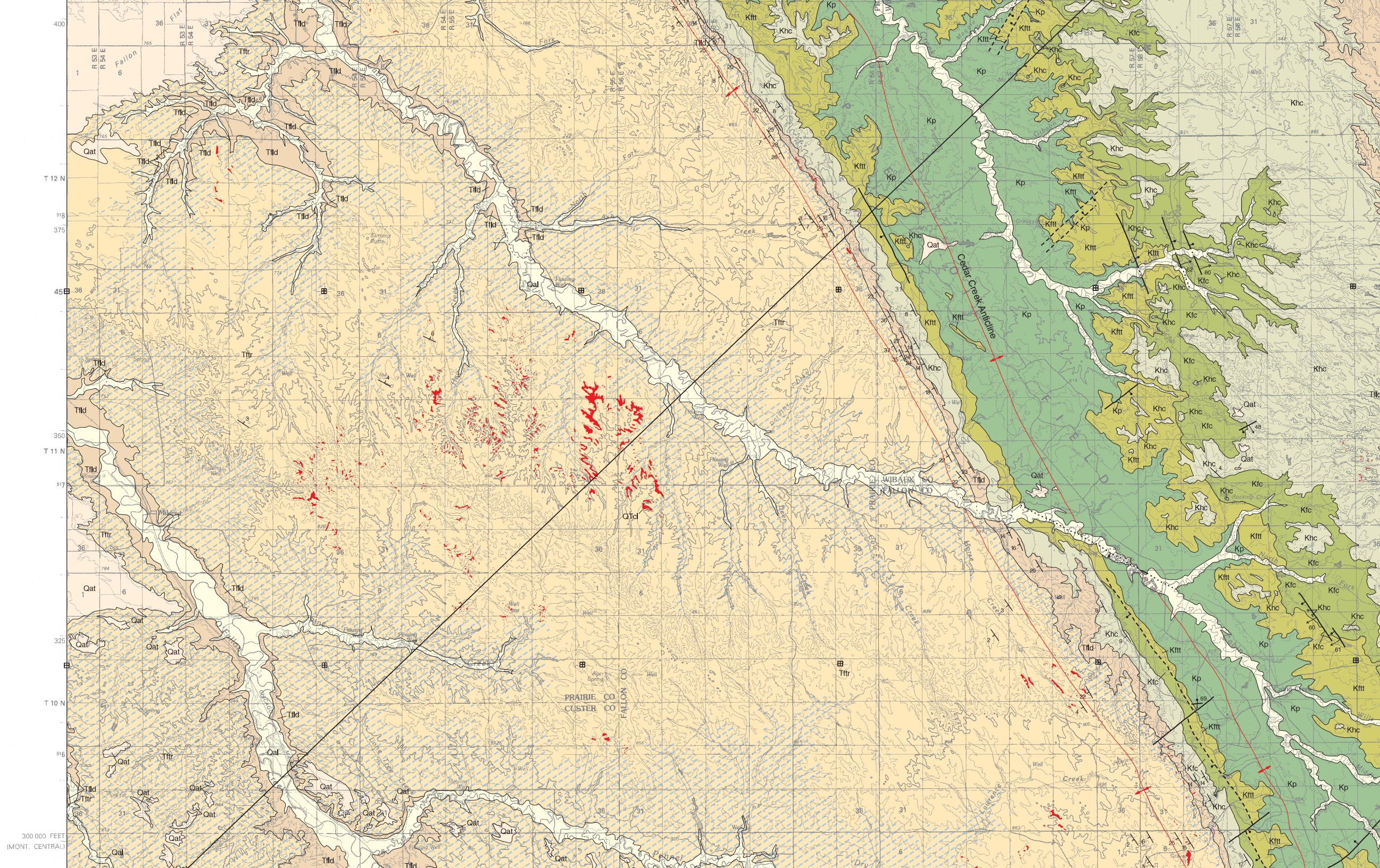


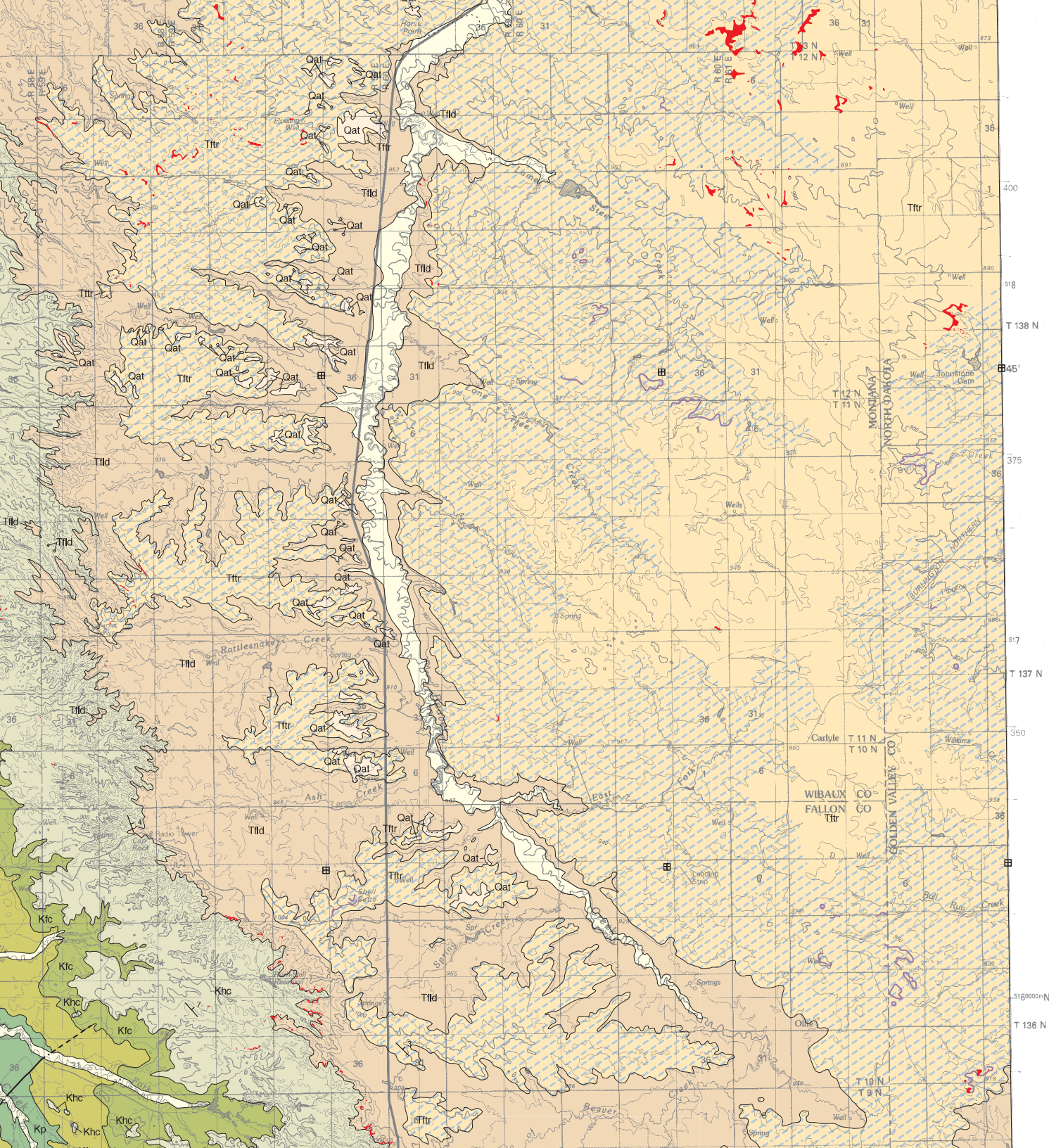
30X60 MINUTE SERIES (TOPOGRAPHIC)



MAP UNITS

- Qal Alluvium of modern channels and flood plains
 - Qac Alluvium-colluvium
 - Qat Alluvium of alluvial terrace deposit
 - QTcl Clinker
 - Tttr Tongue River Member of Fort Union Formation
 - Tfld Ludlow Member of Fort Union Formation
 - Khc Hell Creek Formation
 - Kfc Colgate Member of Fox Hills Formation
 - Kftt Timber Lake Member and Trail City Member of Fox Hills Formation, undivided
 - Kp Pierre Shale
-
- Paleosol interval
 - Silcrete bed





400

518

T 138 N

445'

375

517

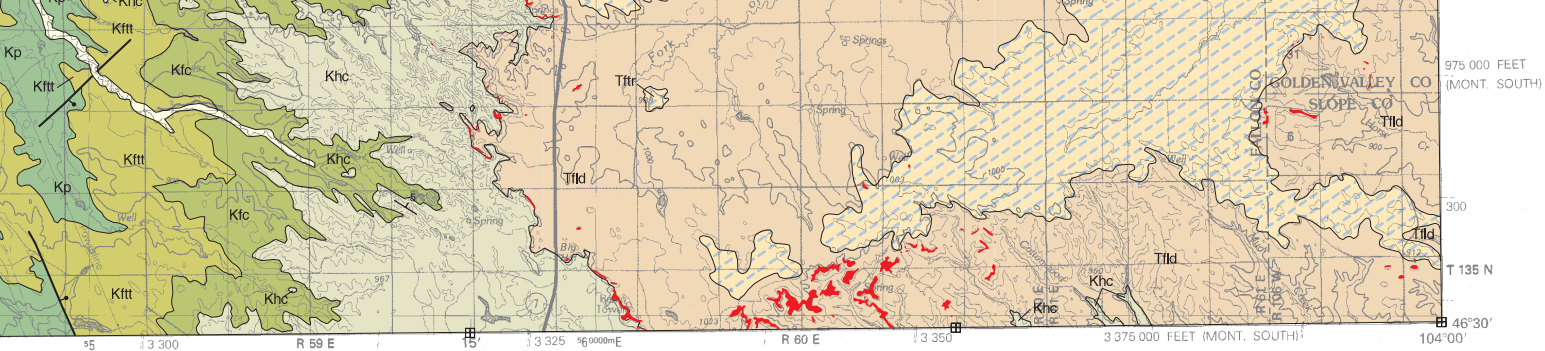
T 137 N

350

38

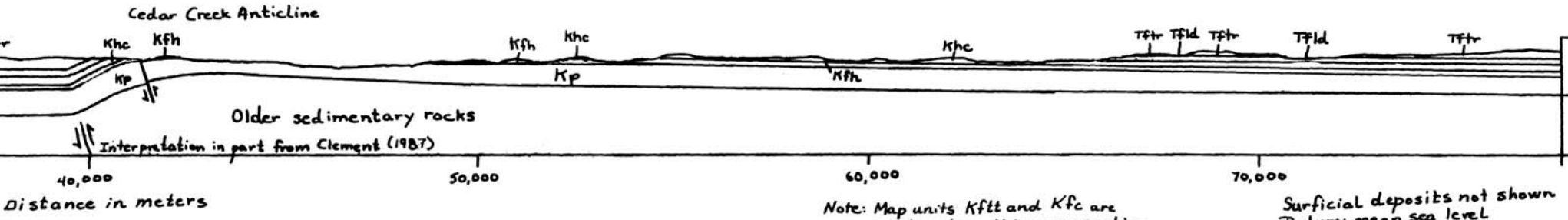
516000mN

T 136 N



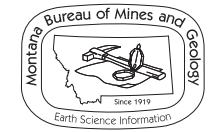
WIBAUX, MONTANA-NORTH DAKOTA
N4630-W10400/30x60

1981



Note: Map units Kftt and Kfc are combined on this cross section as Kfh, Fox Hills Fm.

Surficial deposits not shown
 Datum: mean sea level
 Vertical exaggeration: 3x



Maps may be obtained from
 Publications Office
 Montana Bureau of Mines and Geology
 1300 West Park Street, Butte, Montana 59701-8997
 Phone: (406) 496-4167 Fax: (406) 496-4451
<http://www.mbmgt.mtech.edu>

the STATEMAP component of the National Cooperative Geologic
 Survey under Contract Number 02HQAG0038.
 Gillon and Paul Thale, MBMG. Map layout: Susan Smith, MBMG.