

Montana Bureau of Mines and Geology
Open File No. 468

Geologic and Structure Contour Map
of the Harlem 30' x 60' Quadrangle,
North Central Montana

Robert N. Bergantino, Thomas W. Patton,
and Mark Sholes

2003

To view a full scale version of this map, [click here](#).

For the text files with the map information, [click here](#).

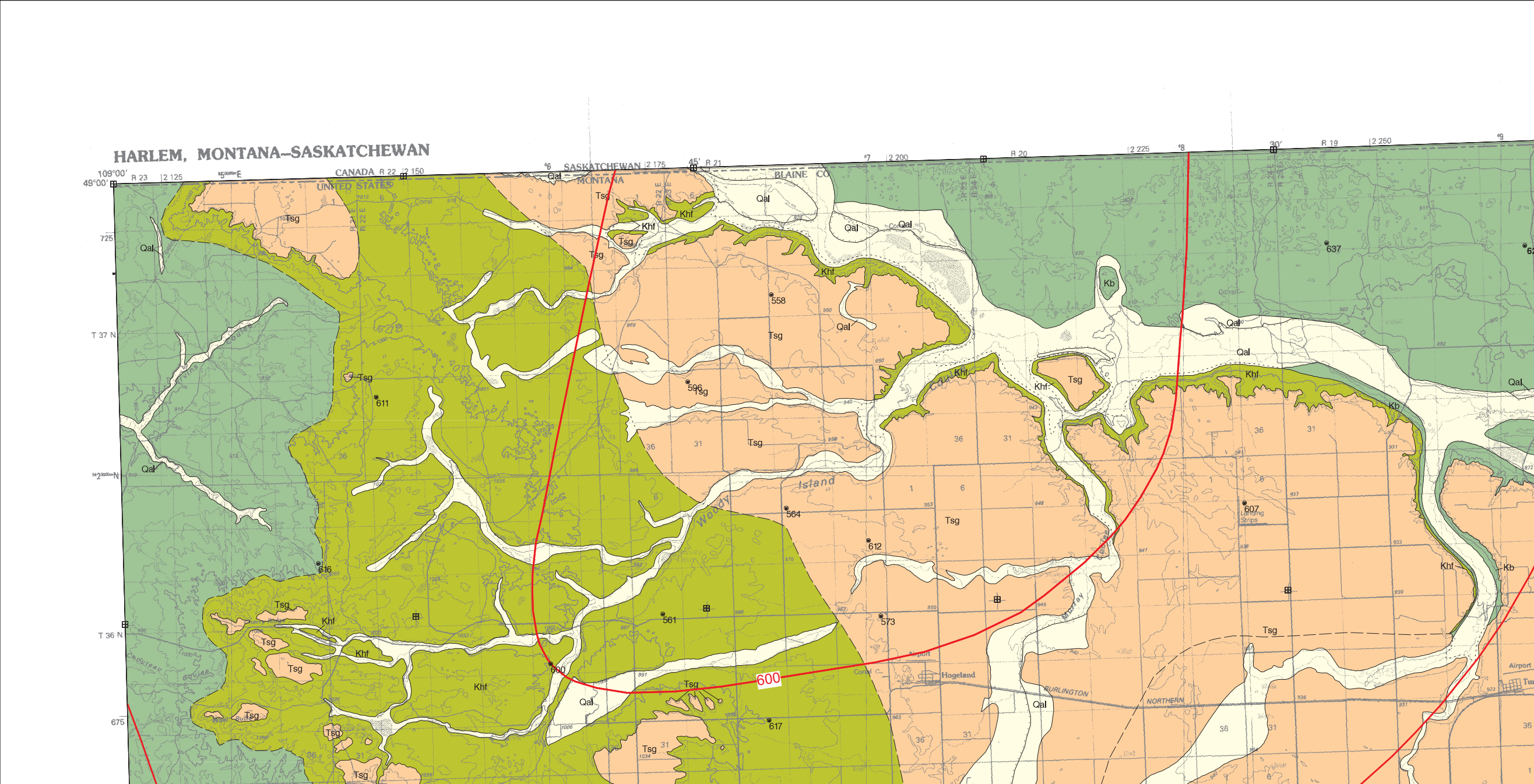
[Digital data link](#)

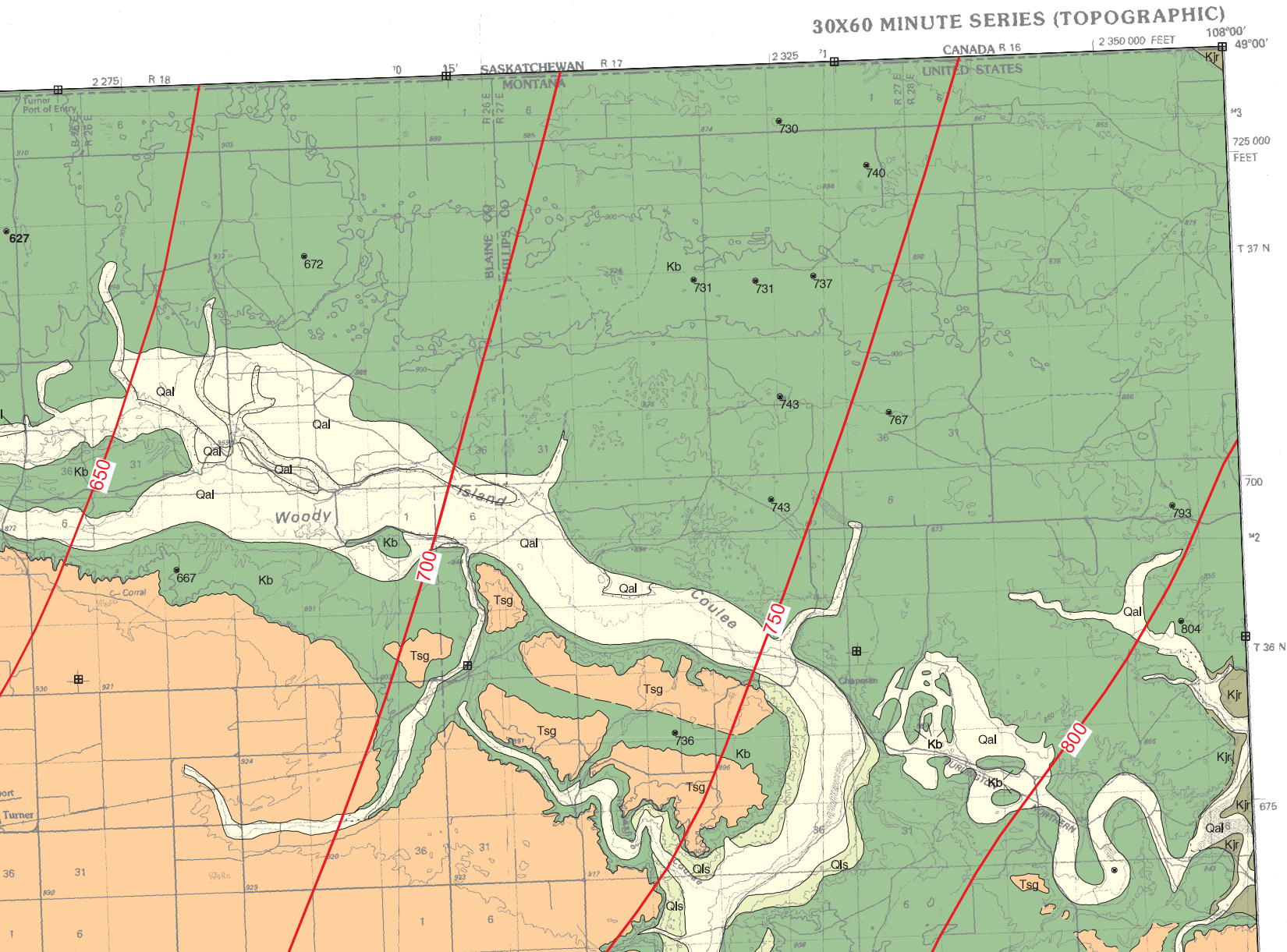
Note— This map was originally published at a scale of 1;100,000 but the page sizes have been modified to fit the average printer capabilities (8½ x 14; legal size paper). There is a an eighth inch overlap on these pages. A full sized colored print of this map can be ordered from the **MBMG Publication Sales Office, 1300 West Park Street, Butte, MT, 59701-8997**.

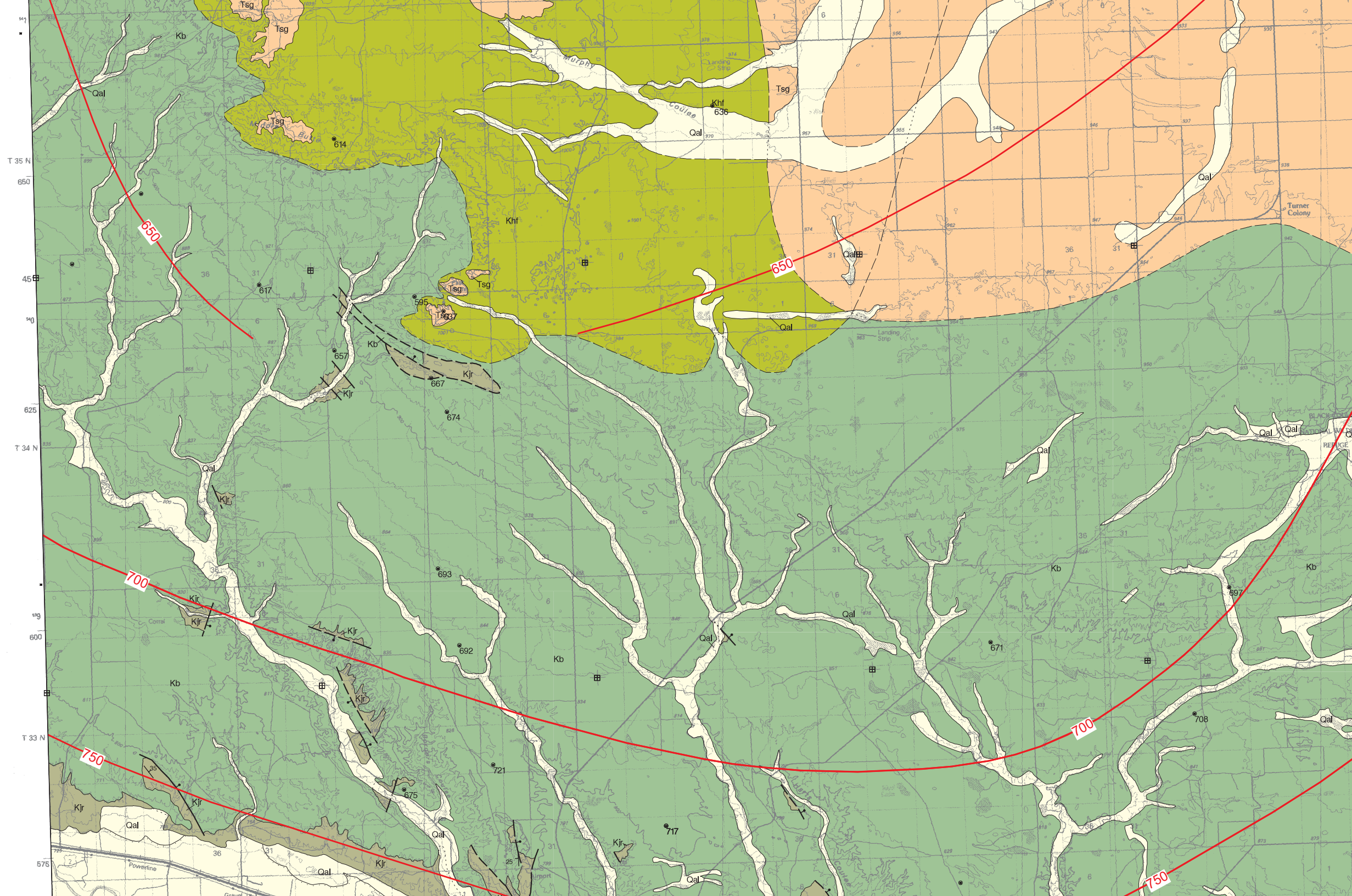
Phone: 406-496-4167

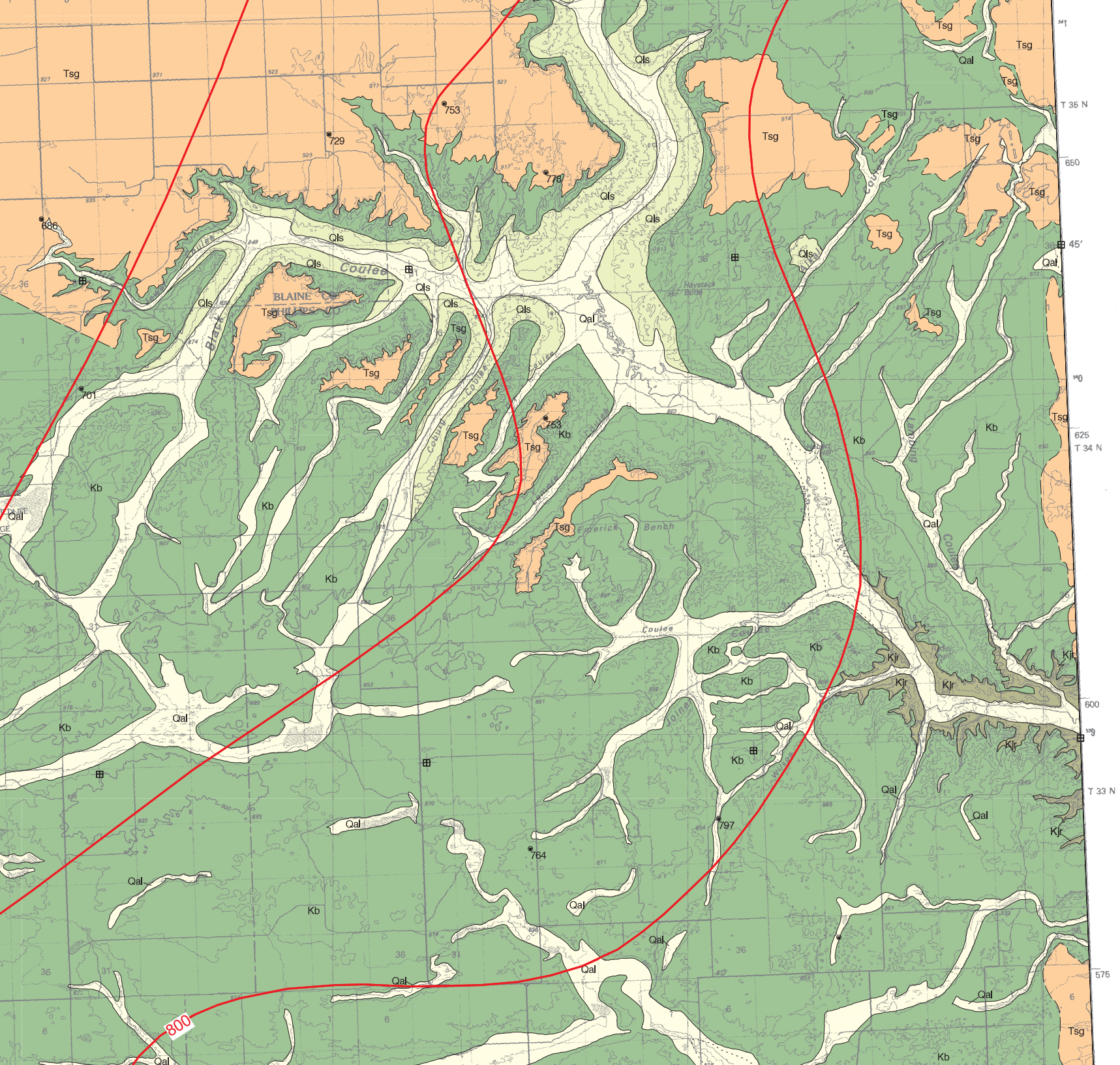
Email: pubsales@mbmg.mtech.edu

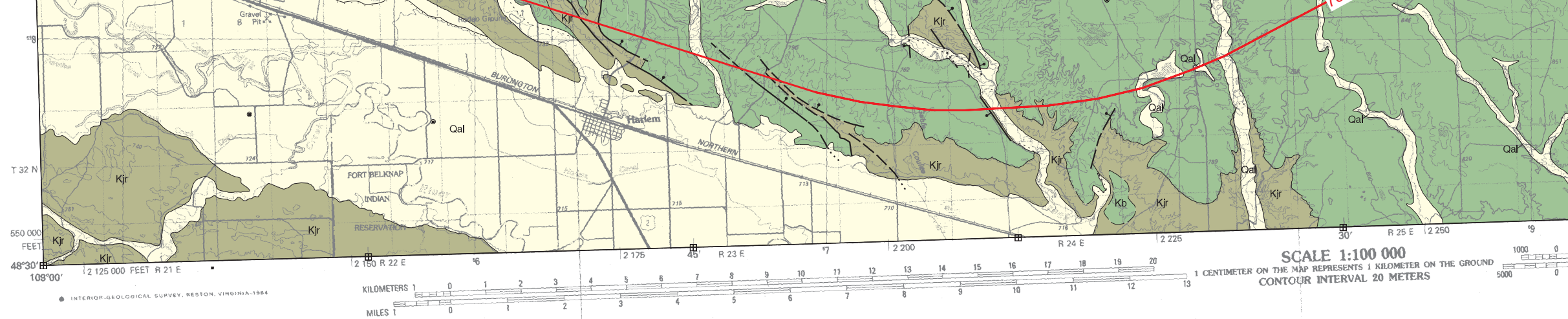
Open File MBMG 468, Plate 1 of 1
Geologic Map, Harlem 30'x60' Quadrangle











Structure contours in meters on top of the Judith River Formation

Contour interval: 50 meters
Datum: mean sea level



Structure contours on top of the Judith River Formation (Kjr) in meters

717

Well control point
699 Kjr = top of Judith River Formation (meters)
no number = well below top of Judith River or top not noted

Montana Bureau of Mines and Geology
Open File No. 468

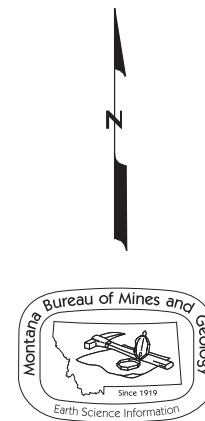
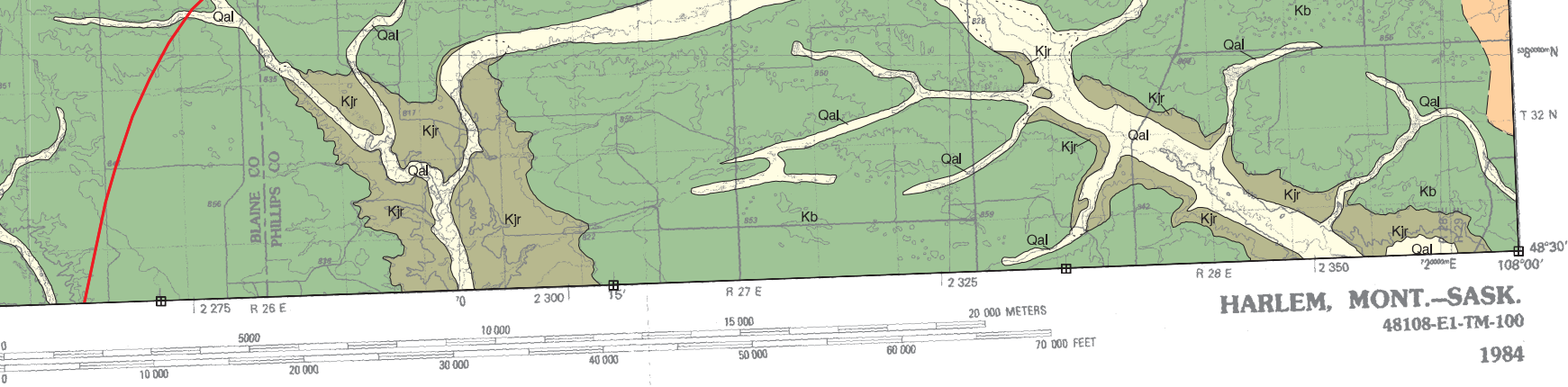
Geologic and Structure Contour Map of the Harlem 30' x 60' Quadrangle North-central Montana

Robert N. Bergantino, Thomas W. Patton,
and Mark A. Sholes

2003

Partial support has been provided by the STATEMAP component of the
Mapping Program of the U.S. Geological Survey under Contract Number

GIS production: Ken Sandau and Paul Thale, MBMG. Map layout: Susan



the National Cooperative Geologic
 ber 02HQAG0038.

usan Smith, MBMG.

Maps may be obtained from
 Publications Office
 Montana Bureau of Mines and Geology
 1300 West Park Street, Butte, Montana 59701-8997
 Phone: (406) 496-4167 Fax: (406) 496-4451
<http://www.mbm.mtech.edu>