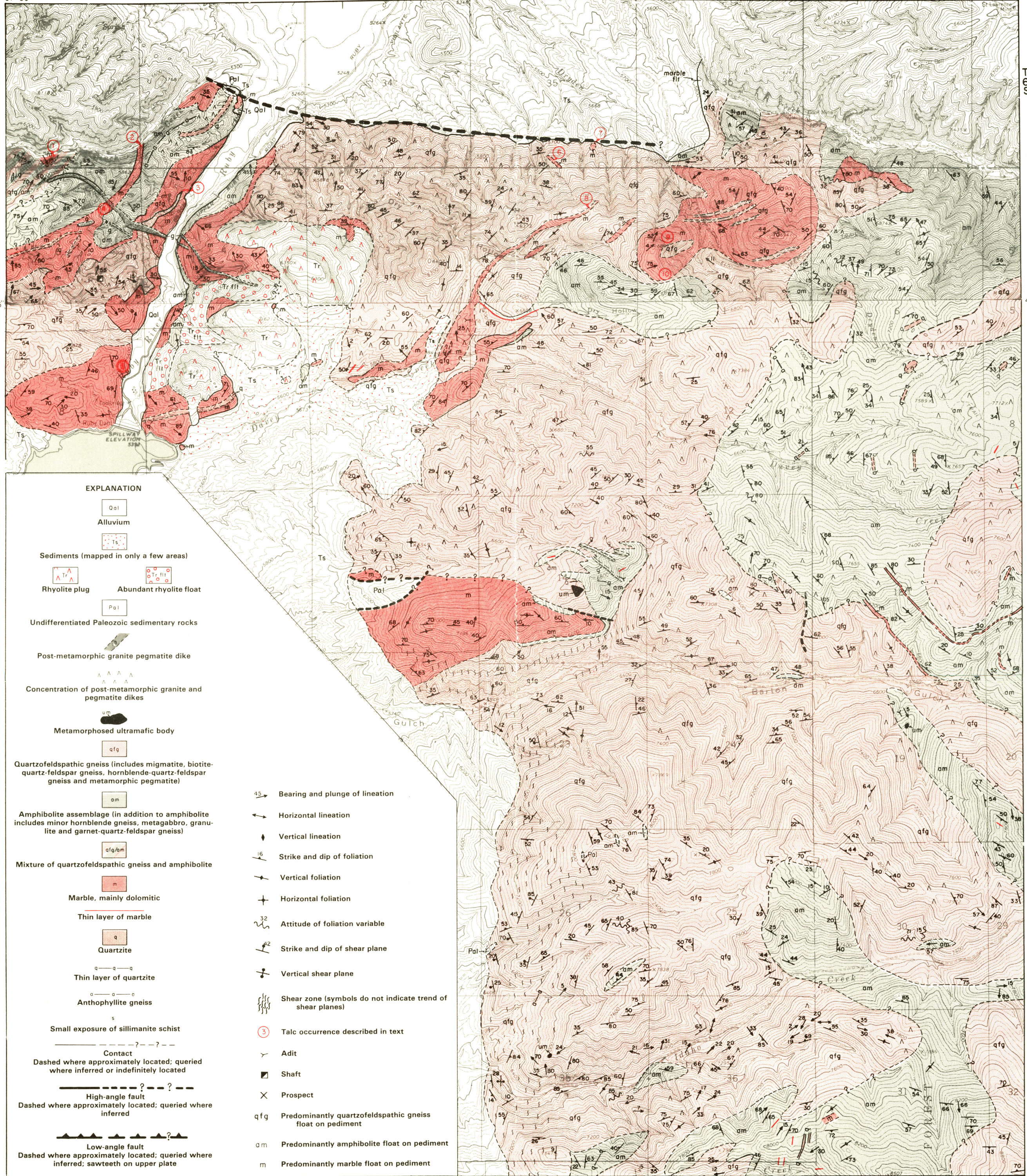


112°07'30" 112°05' R.4 W. R.3 W. 112°00" 45°15' 45°15' T.7 S.



Base: U.S.G.S. Topographic Maps
 Alder Quadrangle, 1963
 Ruby Dam Quadrangle, 1963

Geology and Talc Occurrences of the Greenhorn Range

(Northern Half)

by

Richard B. Berg

Assisted by H. Koehlein and R. Kuhns

