

EXPLANATION

Unit	Thickness
Tscq	1400 feet (430 meters)
Tscm	1600 feet (470 meters)
Trem	uncertain thickness

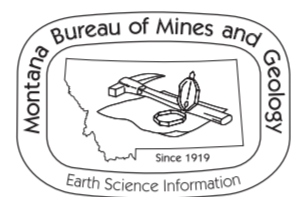
Archean rocks include all Archean metamorphic units shown on map (Aa + Aq + Am + Aqfg)(Plate 1).

See text for unit names and descriptions, and for discussion of cross section.

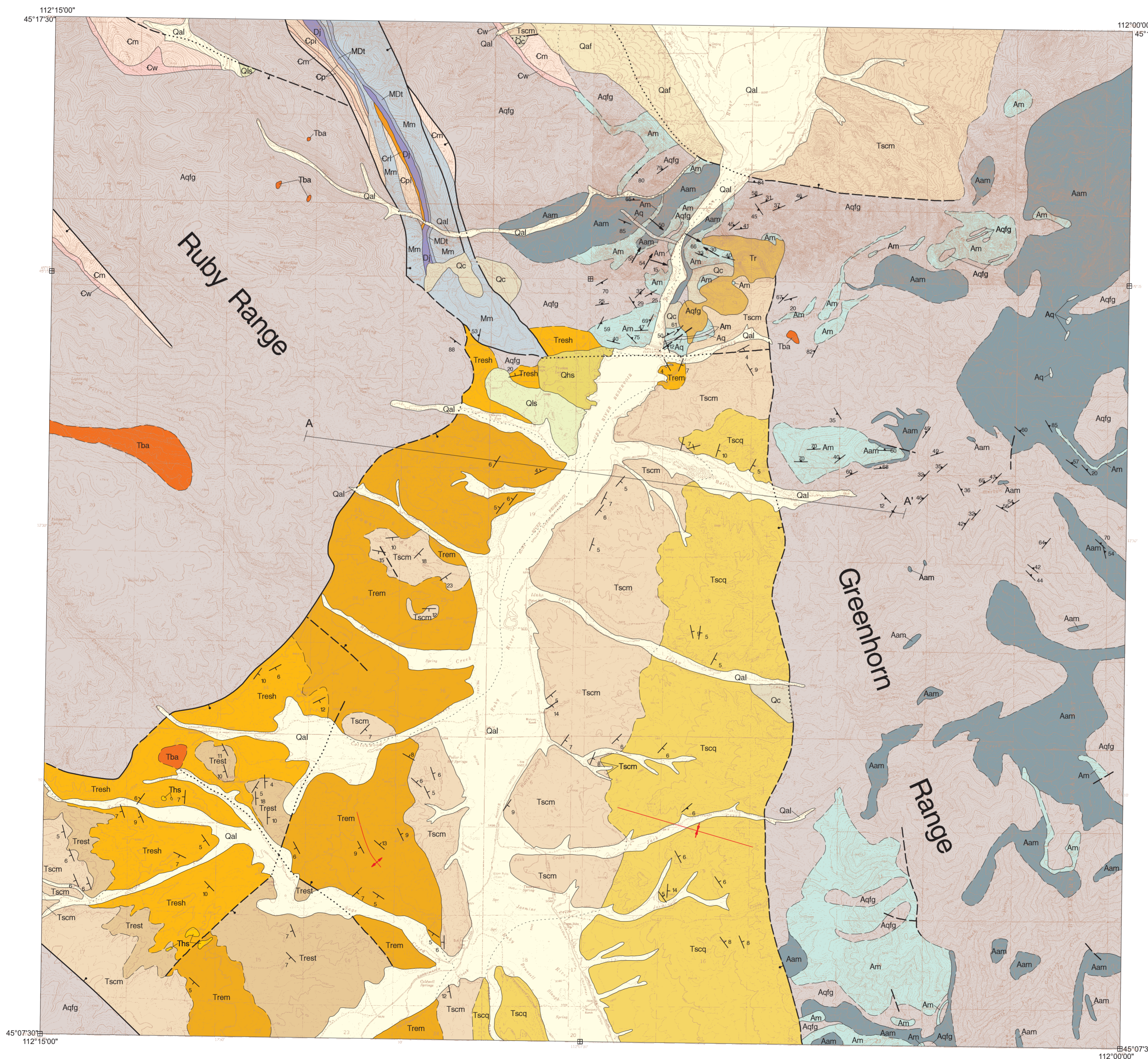
Subsurface geology aided by gravity data.

Partial support has been provided by the EDMAP component of the National Cooperative Geologic Mapping Program of the U.S. Geological Survey under Contract Number 01HQAG0157.

GIS production: Ken Sandau and Paul Thale, MBMG.
Map layout: Susan Smith, MBMG.



Maps may be obtained from: Publications Office
Montana Bureau of Mines and Geology
1300 West Park Street
Butte, Montana 59701-8997
Phone: (406) 496-4167
Fax: (406) 496-4451
<http://www.mbmgt.mtech.edu>



MAP UNITS

Qal	Alluvium of modern channels and flood plains
Qc	Colluvium
Qls	Landslide deposit
Qaf	Alluvial fan deposit
Qhs	Hot springs deposits (Quaternary)
The	Hot springs deposits (Tertiary)
Tscq	Sixmile creek, quartzite pebble conglomerate
Tscm	Sixmile creek, metamorphic tanglemerate
Tba	Basalt
Tr	Rhyolite or rhyolitic sediment
Tresh	Renova, shale member
Trest	Renova, siltstone member
Trem	Renova, mudstone member
Mm	Madison Group, undivided
MDt	Three Forks Formation
Dj	Jefferson Formation
Crl	Red Lion Formation
Cpi	Pilgrim Limestone
Cp	Park Shale
Cm	Meagher Limestone
Cw	Wolsey Shale
Aqfg	Quartzofeldspathic gneiss
Am	Marble
Aq	Quartzite
Aam	Amphibolite assemblage

Scale 1:48,000

MBMG Open File No. 488

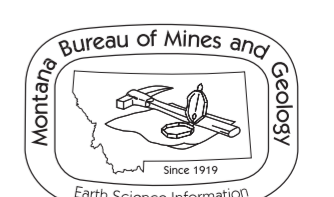
Geologic Map of Ruby Dam Area

Zachary C. St. Jean and Dierdre R. Teeter

2004

Partial support has been provided by the EDMAP component of the National Cooperative Geologic Mapping Program of the U.S. Geological Survey under Contract Number 01HQAG0157.

GIS production: Ken Sandau and Paul Thale, MBMG. Map layout: Susan Smith, MBMG.



Maps may be obtained from: Publications Office
Montana Bureau of Mines and Geology
1300 West Park Street
Butte, Montana 59701-8997
Phone: (406) 496-4167
Fax: (406) 496-4451
<http://www.mbmgt.mtech.edu>