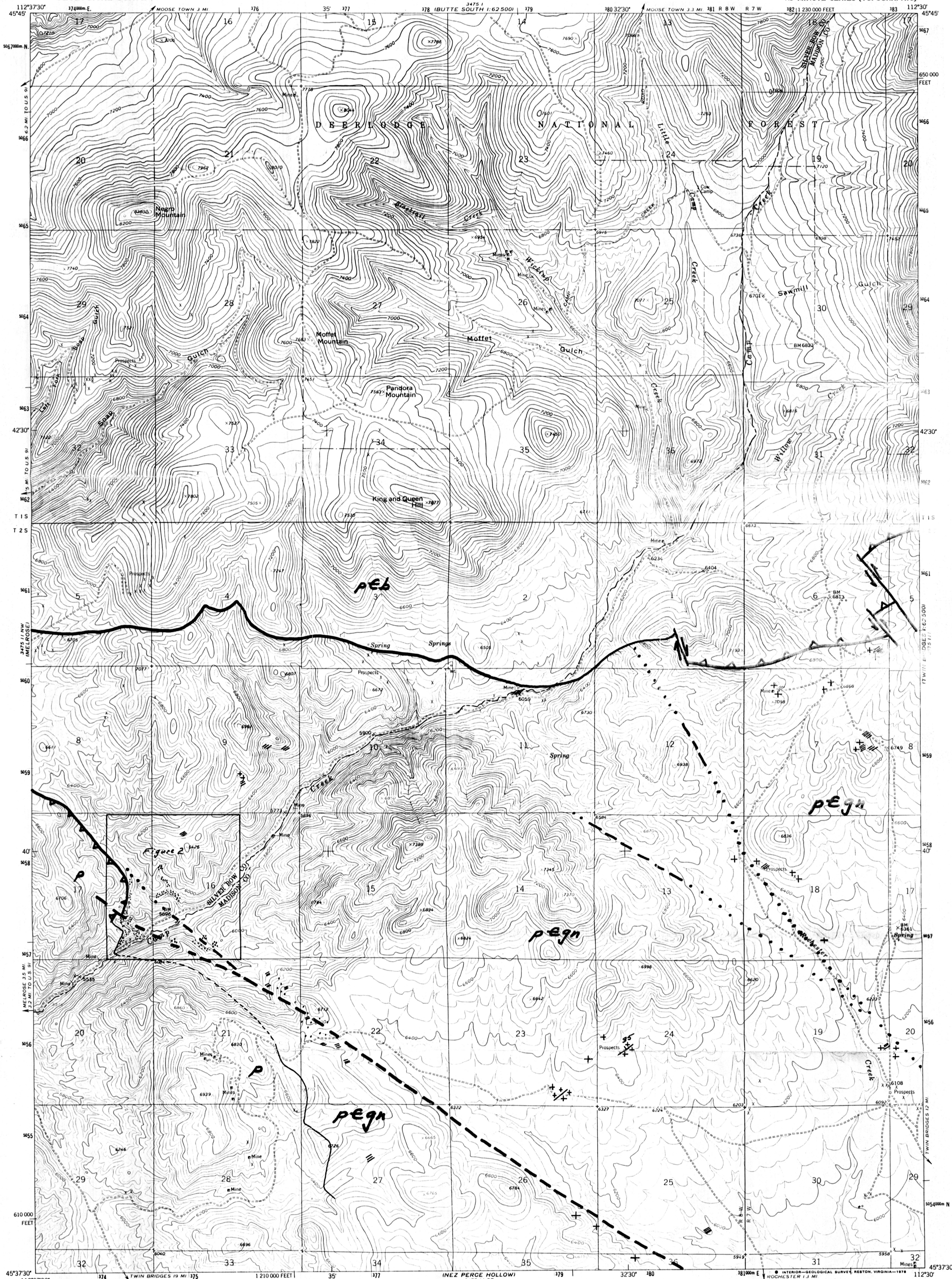


UNITED STATES  
DEPARTMENT OF THE INTERIOR  
GEOLOGICAL SURVEY

WICKIUP CREEK QUADRANGLE  
MONTANA  
7.5 MINUTE SERIES (TOPOGRAPHIC)



Mapped, edited, and published by the Geological Survey

Control by USGS and USC&GS

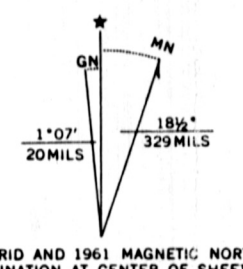
Topography by photogrammetric methods from aerial photographs taken 1956. Field checked 1961

Polyconic projection. 1927 North American datum  
10,000-foot grid based on Montana coordinate system, south zone  
1000-meter Universal Transverse Mercator grid ticks,  
zone 12, shown in blue

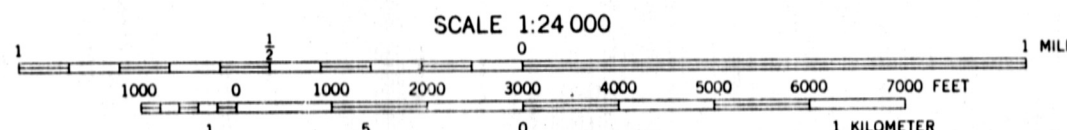
Fine red dashed lines indicate selected fence lines

Map photoinspected 1976

No major culture or drainage changes observed



UTM GRID AND 1961 MAGNETIC NORTH  
DECLINATION AT CENTER OF SHEET



CONTOUR INTERVAL 40 FEET  
NATIONAL GEODETIC VERTICAL DATUM OF 1929



ROAD CLASSIFICATION  
Unimproved dirt - - - - -

THIS MAP COMPLIES WITH NATIONAL MAP ACCURACY STANDARDS  
FOR SALE BY U. S. GEOLOGICAL SURVEY, DENVER, COLORADO 80225, OR RESTON, VIRGINIA 22092  
A FOLDER DESCRIBING TOPOGRAPHIC MAPS AND SYMBOLS IS AVAILABLE ON REQUEST

WICKIUP CREEK, MONT.  
N4537.5-W11230.7/5

1961  
PHOTOINSPECTED 1976  
AMS 3475 11 NE-SERIES V894