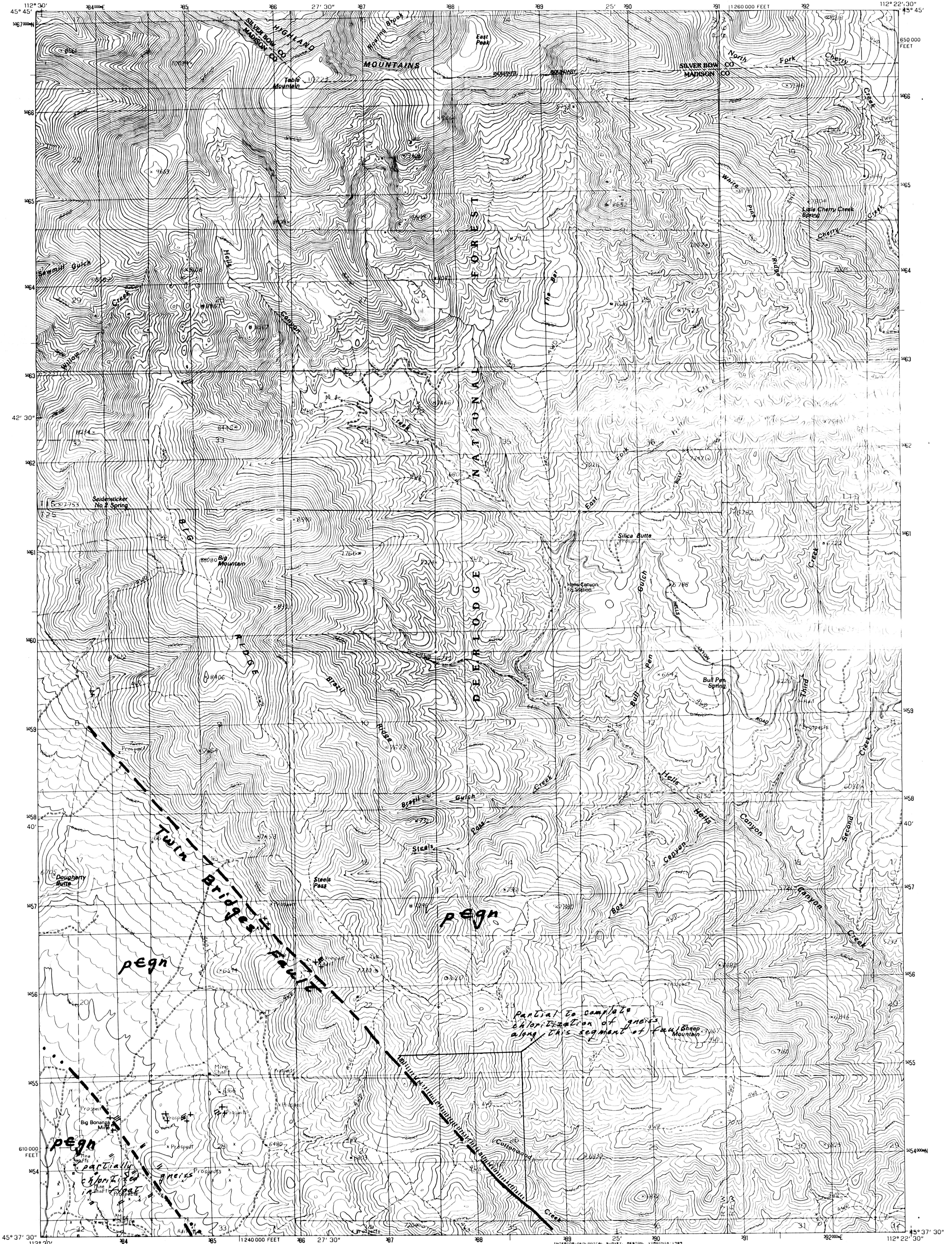


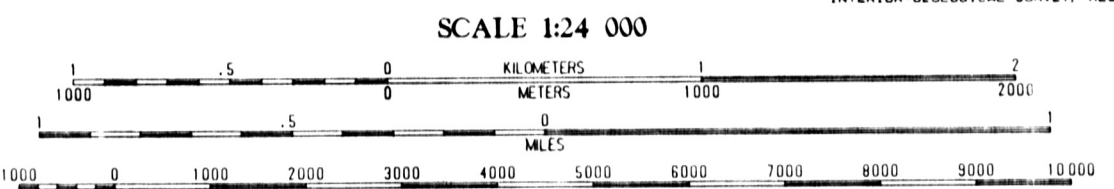
UNITED STATES  
DEPARTMENT OF THE INTERIOR  
GEOLOGICAL SURVEY

TABLE MOUNTAIN QUADRANGLE  
MONTANA  
7.5 MINUTE SERIES (TOPOGRAPHIC)



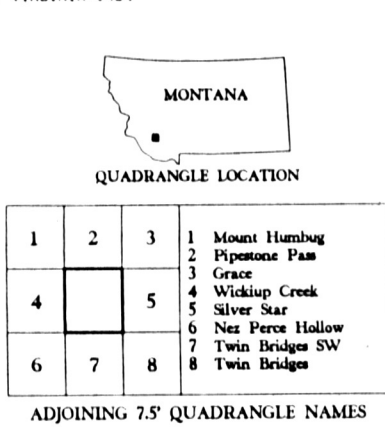
PRODUCED BY THE UNITED STATES GEOLOGICAL SURVEY  
CONTROL BY . . . . . USGS NOS/NOAA  
COMPILED FROM AERIAL PHOTOGRAPHS TAKEN . . . . . 1956  
FIELD CHECKED . . . . . 1960  
LIMITED REVISIONS FROM AERIAL PHOTOGRAPHS TAKEN . . . . . 1985  
FIELD CHECKED . . . . . 1987  
MAP EDITED . . . . . 1989  
PROJECTION . . . . . LAMBERT CONFORMAL CONIC  
GRID 1000-METER UNIVERSAL TRANSVERSE MERCATOR . . . . . ZONE 12  
10000-FOOT STATE GRID TICS . . . . . MONTANA SOUTH ZONE  
UTM GRID DECLINATION . . . . . 192 WEST  
1989 MAGNETIC NORTH DECLINATION . . . . . 16' EAST  
VERTICAL DATUM . . . . . NATIONAL GEODETIC VERTICAL DATUM OF 1929  
HORIZONTAL DATUM . . . . . 1927 NORTH AMERICAN DATUM  
To place on the predicted North American Datum of 1983,  
move the projection lines as shown by dashed corner ticks  
(11 meters north and 56 meters east).  
There may be private inholdings within the boundaries of any  
Federal and State Reservations shown on this map.  
Public Land Survey System is shown as published in 1963 and  
verified or supplemented in 1987.

**PROVISIONAL MAP**  
Produced from original  
manuscript drawings. Infor-  
mation shown as of date of  
field check. T



SCALE 1:24 000  
CONTOUR INTERVAL 40 FEET  
To convert feet to meters multiply by .3048  
To convert meters to feet multiply by 3.2808

THIS MAP COMPLIES WITH NATIONAL MAP ACCURACY STANDARDS  
FOR SALE BY U.S. GEOLOGICAL SURVEY, DENVER, COLORADO 80225  
OR RESTON, VIRGINIA 22092.



ROAD LEGEND  
Improved Road . . . . .  
Unimproved Road . . . . .  
Trail . . . . .  
Interstate Route U.S. Route State Route

**TABLE MOUNTAIN, MONTANA**  
PROVISIONAL EDITION 1989  
45112-F4-TF-024