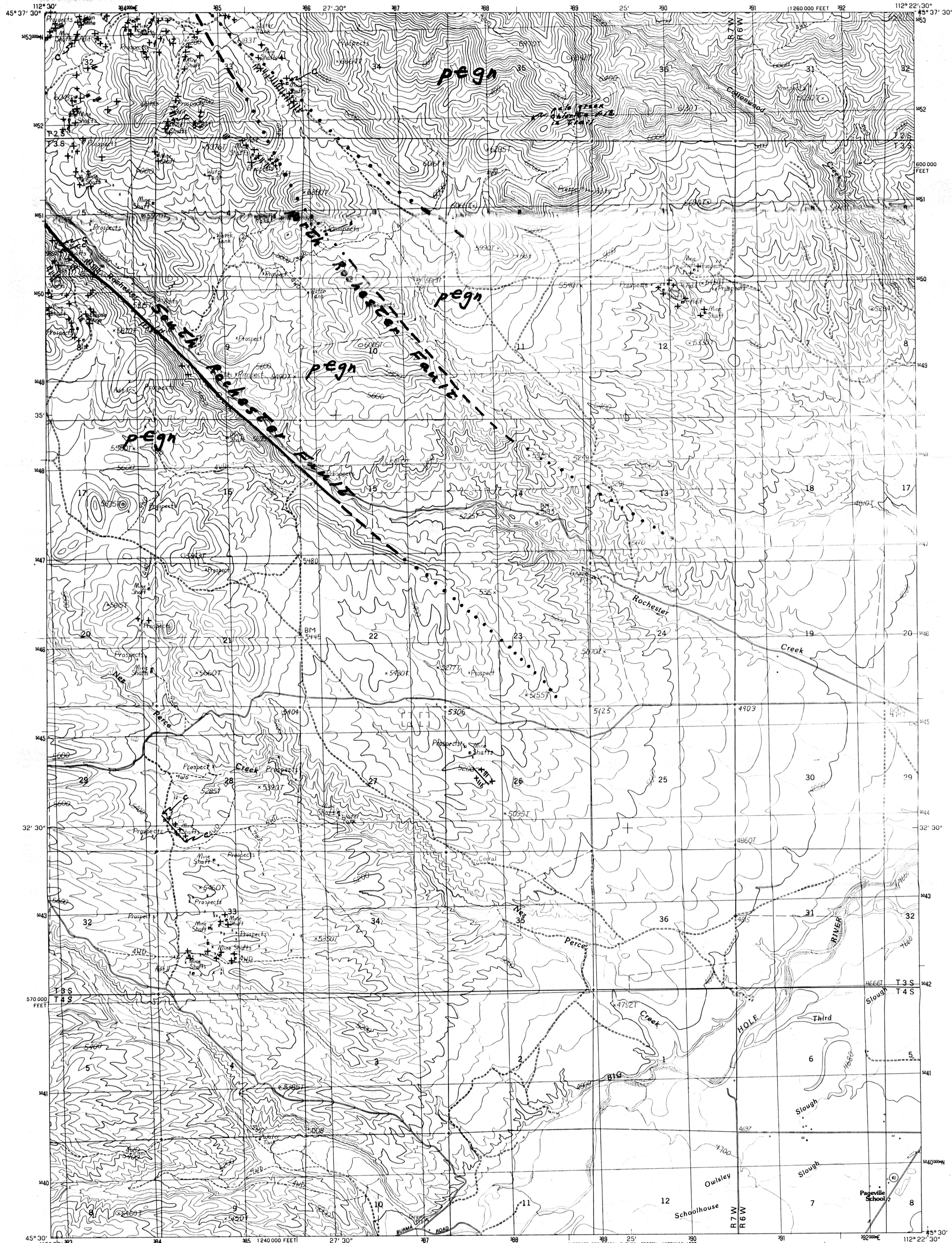


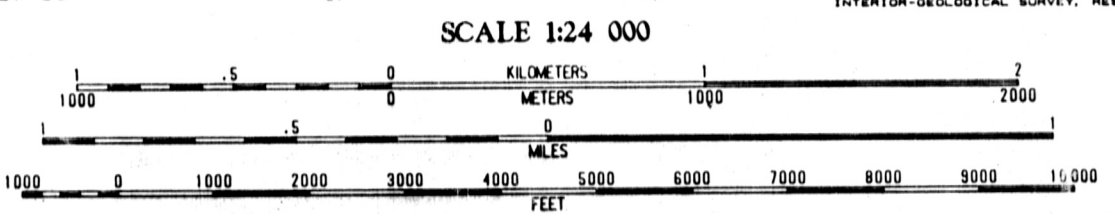
UNITED STATES  
DEPARTMENT OF THE INTERIOR  
GEOLOGICAL SURVEY

TWIN BRIDGES SW QUADRANGLE  
MONTANA-MADISON CO.  
7.5 MINUTE SERIES (TOPOGRAPHIC)



PRODUCED BY THE UNITED STATES GEOLOGICAL SURVEY  
CONTROL BY U.S.G.S./NOAA  
COMPILED FROM AERIAL PHOTOGRAPHS TAKEN . . . . . 1956  
FIELD CHECKED . . . . . 1960  
LIMITED REVISION FROM AERIAL PHOTOGRAPHS TAKEN . . . . . 1965  
FIELD CHECKED . . . . . 1987  
MAP EDITED . . . . . 1989  
PROJECTION . . . . . LAMBERT CONFORMAL CONIC  
GRID 100-METER UNIVERSAL TRANSVERSE MERCATOR . . . . . ZONE 12  
1000-FOOT STATE GRID TICKS . . . . . MONTANA STATE ZONE  
UTM GRID DECLINATION . . . . . 11° WEST  
1989 MAGNETIC NORTH DECLINATION . . . . . 16° EAST  
VERTICAL DATUM . . . . . NATIONAL GEODETIC VERTICAL DATUM OF 1989  
HORIZONTAL DATUM . . . . . 1987 NORTH AMERICAN DATUM  
To place on the predicted North American Datum of 1983,  
move the projection lines as shown by dashed corner ticks  
(11 meters north and 66 meters east).  
There may be private inholdings within the boundaries of any  
Federal and State Reservations shown on this map.  
Public Land Survey System is shown as published in 1960 and  
verified or supplemented in 1987.

**PROVISIONAL MAP**  
Produced from original  
manuscript drawings. Informa-  
tion shown as of date of  
field check.



SCALE 1:24 000  
CONTOUR INTERVAL 40 FEET  
SUPPLEMENTARY CONTOUR INTERVAL 20 FEET  
To convert feet to meters multiply by 0.3048  
To convert meters to feet multiply by 3.2808  
THIS MAP COMPLIES WITH NATIONAL MAP ACCURACY STANDARDS  
FOR SALE BY U.S. GEOLOGICAL SURVEY, DENVER, COLORADO 80225  
OR RESTON, VIRGINIA 22092

QUADRANGLE LOCATION

1	2	3	1
2	3	4	2
3	4	5	3
4	5	6	4
5	6	7	5
6	7	8	6

ADJOINING 7.5' QUADRANGLE NAMES

ROAD LEGEND  
Improved Road . . . . .  
Unimproved Road . . . . .  
Trail . . . . .  
Interstate Route . . . . .  
U.S. Route . . . . .  
State Route . . . . .

TWIN BRIDGES SW, MONTANA  
PROVISIONAL EDITION 1989

45112-E4-TF-024