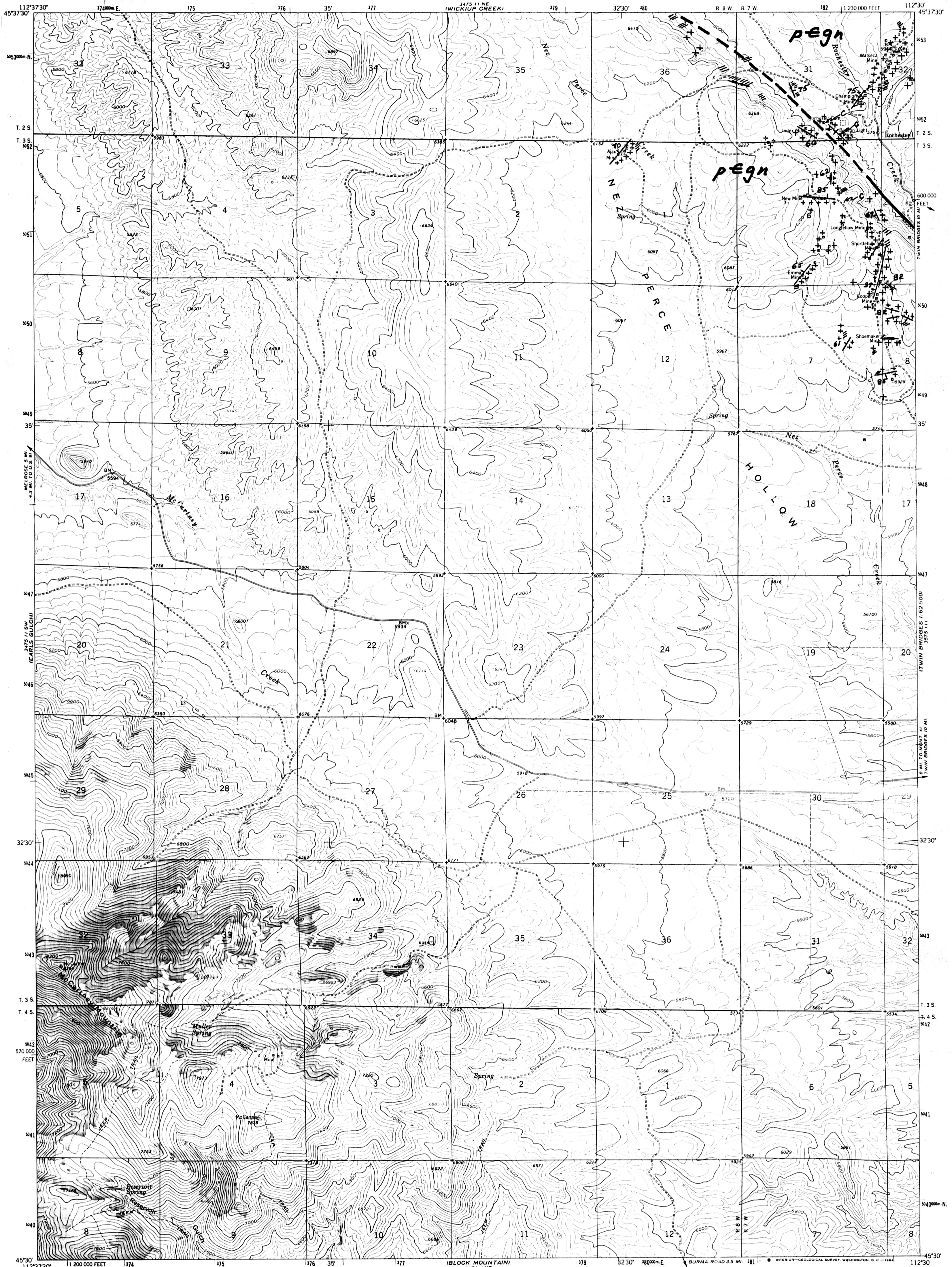


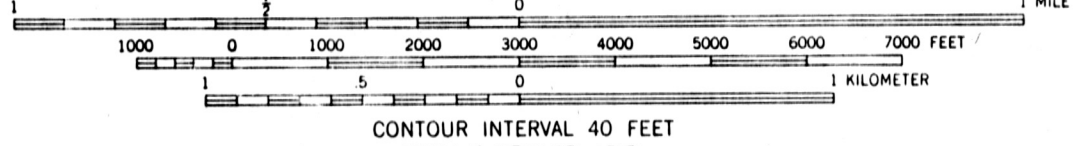
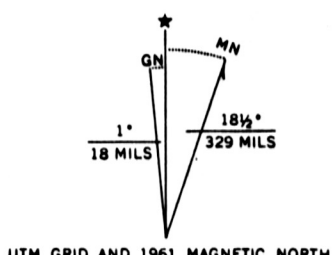
UNITED STATES
DEPARTMENT OF THE INTERIOR
GEOLOGICAL SURVEY

NEZ PERCE HOLLOW QUADRANGLE
MONTANA-MADISON CO.
7.5 MINUTE SERIES (TOPOGRAPHIC)



Mapped, edited, and published by the Geological Survey

Control by USGS and USC&GS
Topography by photogrammetric methods from aerial
photographs taken 1956. Field checked 1961
Polyconic projection. 1927 North American datum
10,000-foot grid based on Montana coordinate system, south zone
1000-meter Universal Transverse Mercator grid ticks,
zone 12, shown in blue
Fine red dashed lines indicate selected fence lines



ROAD CLASSIFICATION
Light-duty ——— Unimproved dirt - - - - -

NEZ PERCE HOLLOW, MONT.
N4530-W11230/7.5

1961

AMS 3475 11 SE-SERIES V894

THIS MAP COMPLIES WITH NATIONAL MAP ACCURACY STANDARDS
FOR SALE BY U.S. GEOLOGICAL SURVEY, DENVER 25, COLORADO OR WASHINGTON 25, D.C.
A FOLDER DESCRIBING TOPOGRAPHIC MAPS AND SYMBOLS IS AVAILABLE ON REQUEST