

Montana Bureau of Mines and Geology
Open File No. 513

Geologic Map of the Melstone
30' x 60' Quadrangle, Eastern Montana

Susan M. Vuke and Edith M. Wilde

2004

To view a full scale version of this map, [click here](#).

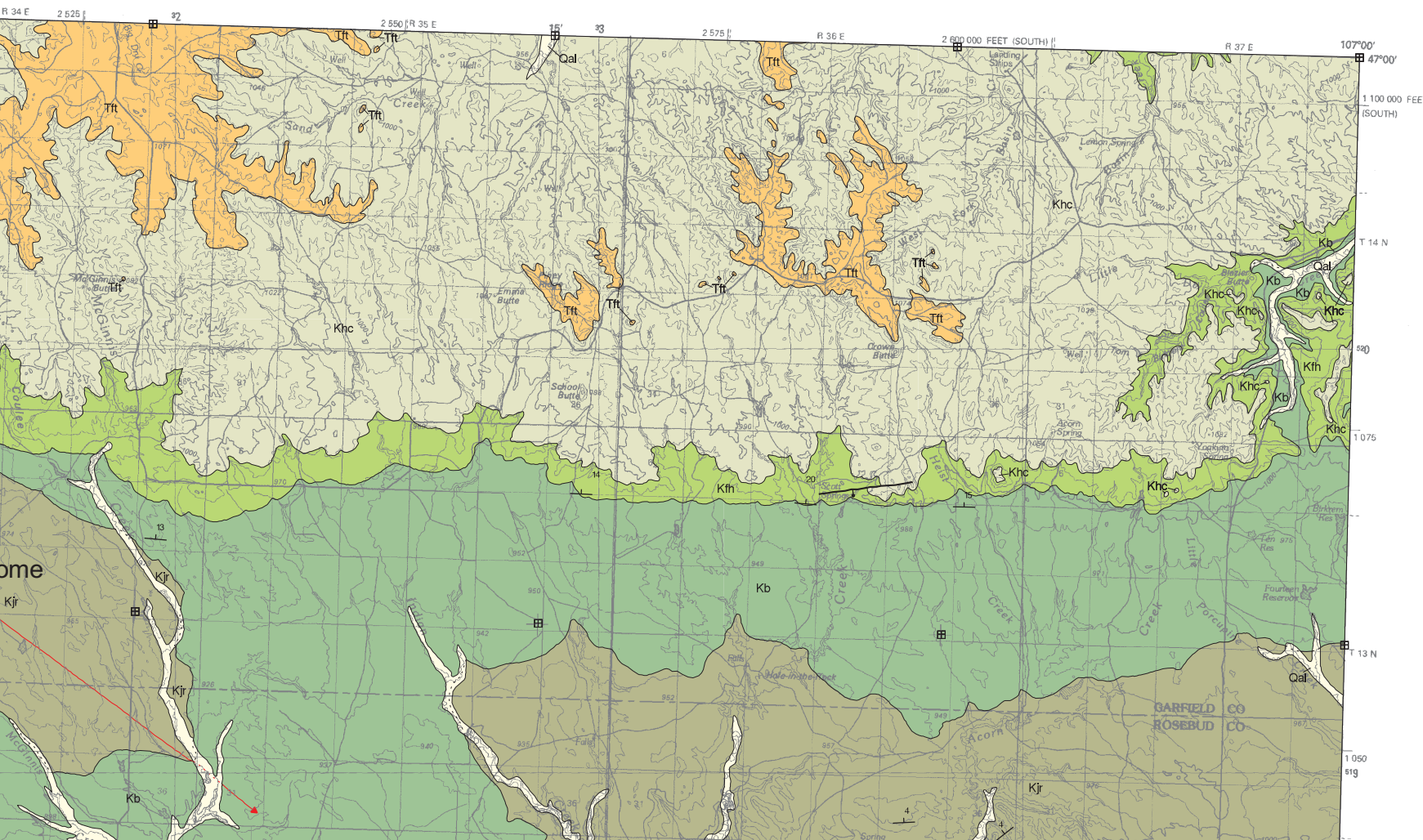
For the text files with the map information, [click here](#).

[Digital data link](#)

Note— This map was originally published at a scale of 1;100,000 but the page sizes have been modified to fit the average printer capabilities (8½ x 14; legal size paper). There is a an eighth inch overlap on these pages. A full sized colored print of this map can be ordered from the **MBMG Publication Sales Office, 1300 West Park Street, Butte, MT, 59701-8997.**

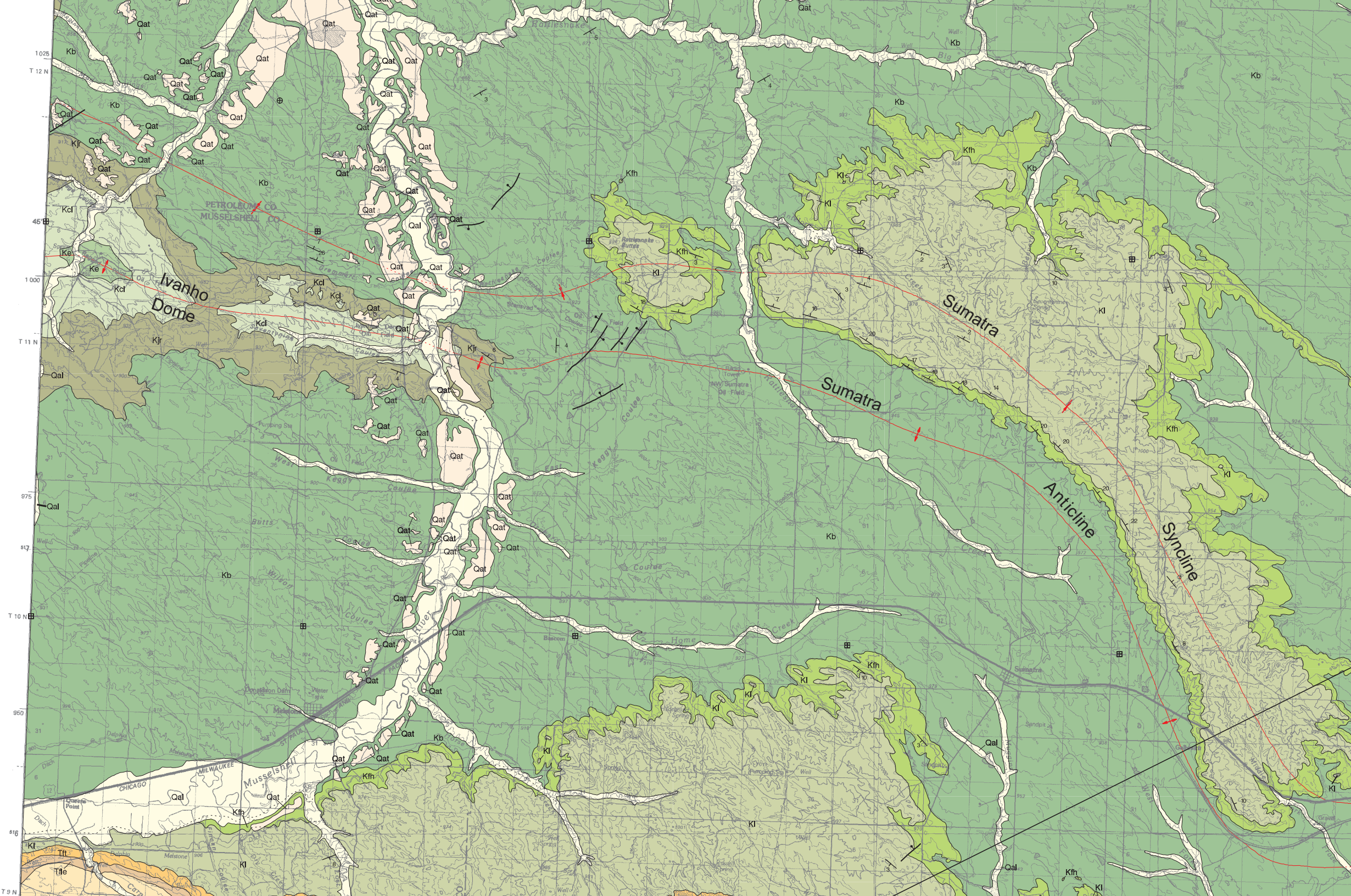
Phone: 406-496-4167

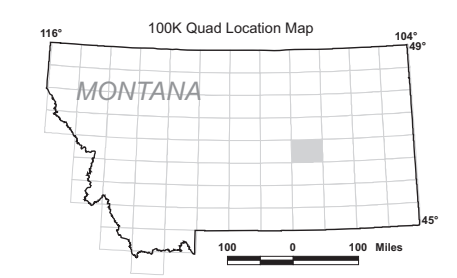
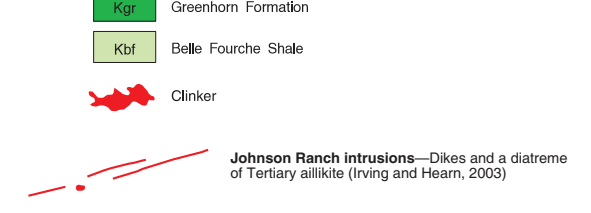
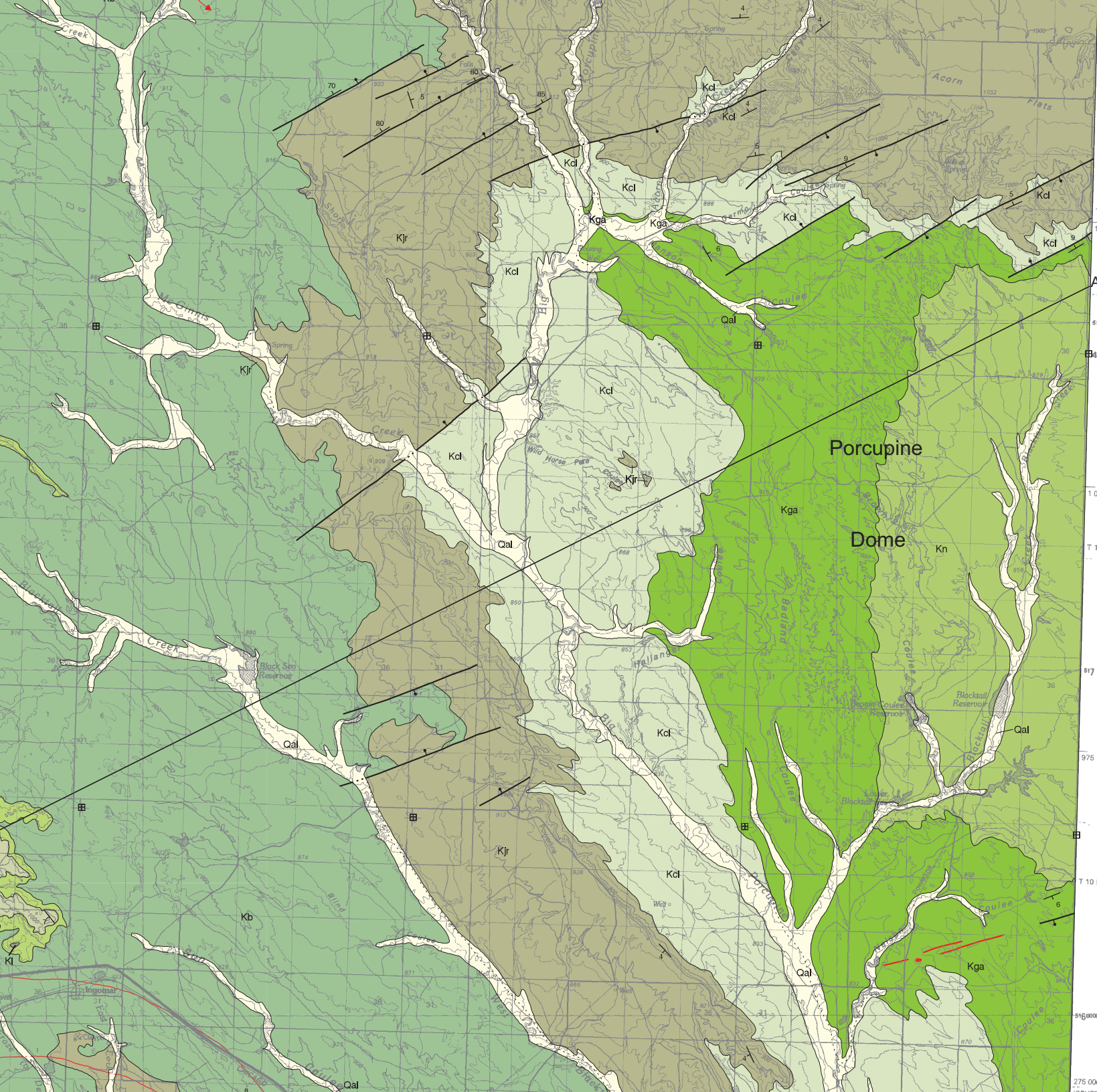
Email: pubsales@mbmg.mtech.edu



MAP UNITS

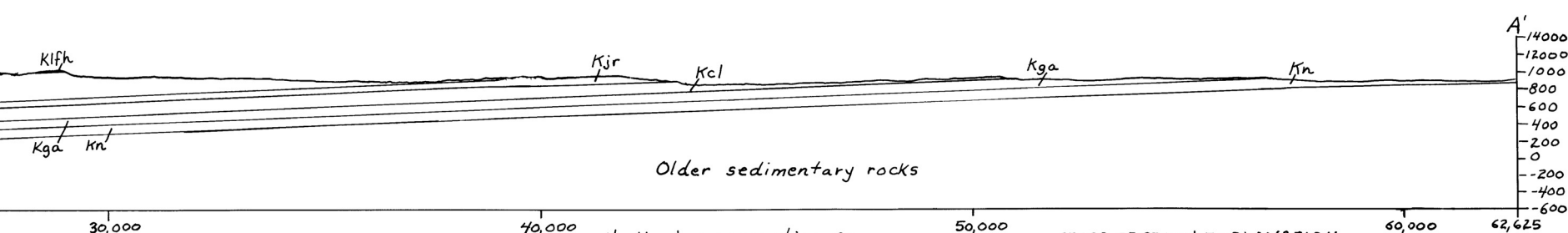
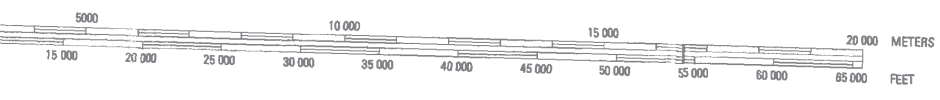
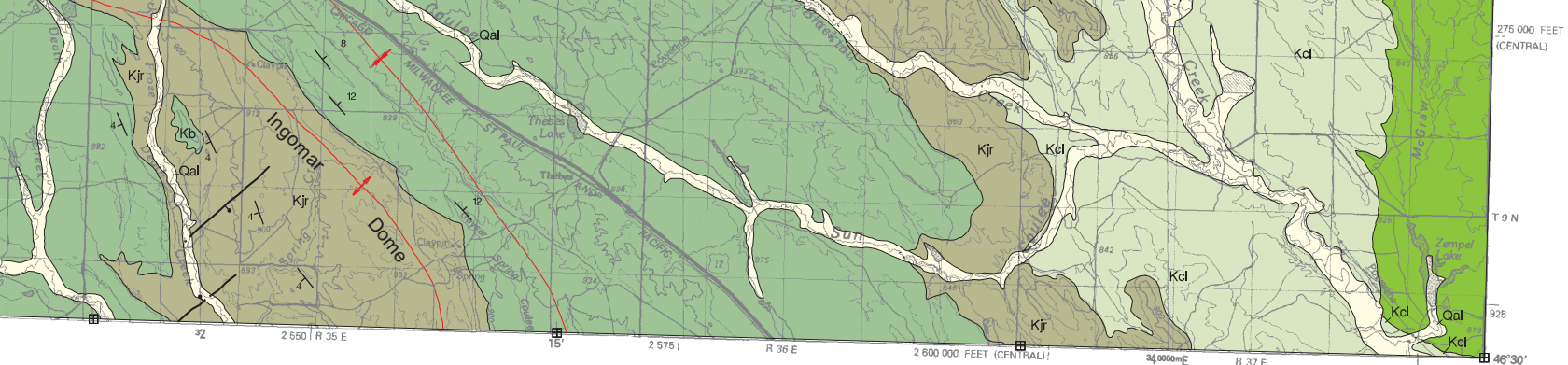
Qal	Alluvium of modern channels and flood plains
Qat	Alluvium of alluvial terrace deposit
Tttr	Tongue River Member of Fort Union Formation
Ttle	Lebo Member of Fort Union Formation
Tt	Tullock Member of Fort Union Formation
Khc	Hell Creek Formation
Kl	Lance Formation
Kfh	Fox Hills Formation
Kb	Bearpaw Shale
Kjr	Judith River Formation
Kcl	Claggett Shale
Ke	Eagle Formation
Ktc	Telegraph Creek Formation
Kga	Gammon Shale
Kn	Niobrara Formation
Kca	Carlile Formation
Kgr	Greenhorn Formation
Kst	Belle Fourche Shale





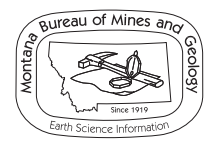
Quad index

WINNETT	SAND SPRINGS	JORDAN
MUSSEL-SHELL	MELSTONE	ANGELA
ROUNDUP	HYSHAM	FORSYTH



Vertical exaggeration: 2x
 Datum: mean sea level
 Surficial deposits not shown

- CROSS SECTION EXPLANATION**
- Tflc Lebo Member of Fort Union Fm.
 - Tft Tullock Member of Fort Union Fm.
 - Klfh Lance and Fox Hills Fms. undivided
 - Kb Bearpaw Shale
 - Kjr Judith River Fm.
 - Kcl Claggett Shale
 - Kga Gammon Shale
 - Kn Niobrara Shale



Maps may be obtained from
 Publications Office
 Montana Bureau of Mines and Geology
 1300 West Park Street, Butte, Montana 59701-8997
 Phone: (406) 496-4167 Fax: (406) 496-4451
<http://www.mbm.mtech.edu>

led by the STATEMAP component of the National Cooperative Geologic
 Geological Survey under Contract Number 04HQAG0079.

and Paul Thale, MBMG. Map layout: Susan Smith, MBMG.