

Montana Bureau of Mines and Geology
Open File No. 514

Geologic Map of the Jordan
30' x 60' Quadrangle, Eastern Montana

Edith M. Wilde and Susan M. Vuke

2004

To view a full scale version of this map, [click here](#).

For the text files with the map information, [click here](#).

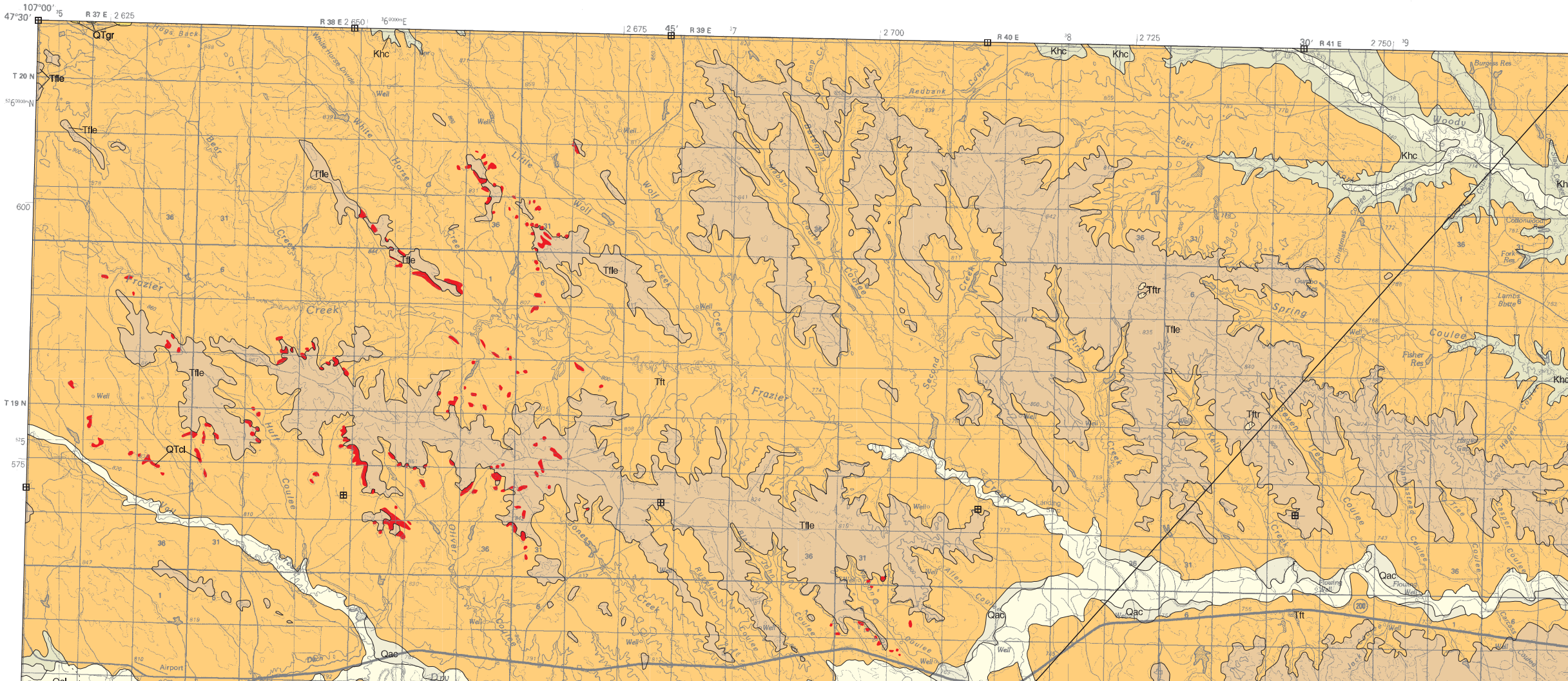
[Digital data link](#)

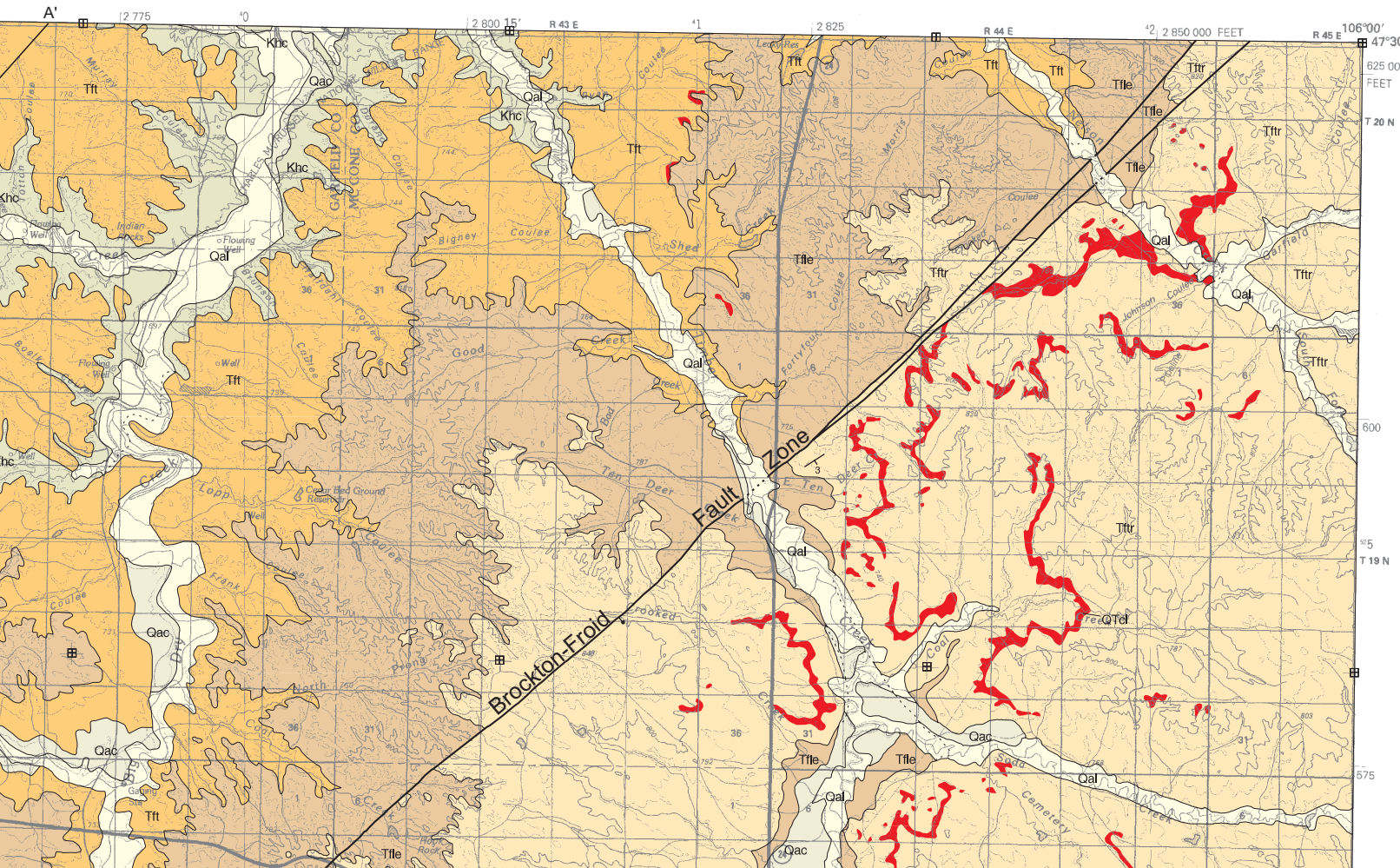
Note— This map was originally published at a scale of 1;100,000 but the page sizes have been modified to fit the average printer capabilities (8½ x 14; legal size paper). There is a an eighth inch overlap on these pages. A full sized colored print of this map can be ordered from the **MBMG Publication Sales Office, 1300 West Park Street, Butte, MT, 59701-8997.**

Phone: 406-496-4167

Email: pubsales@mbmg.mtech.edu

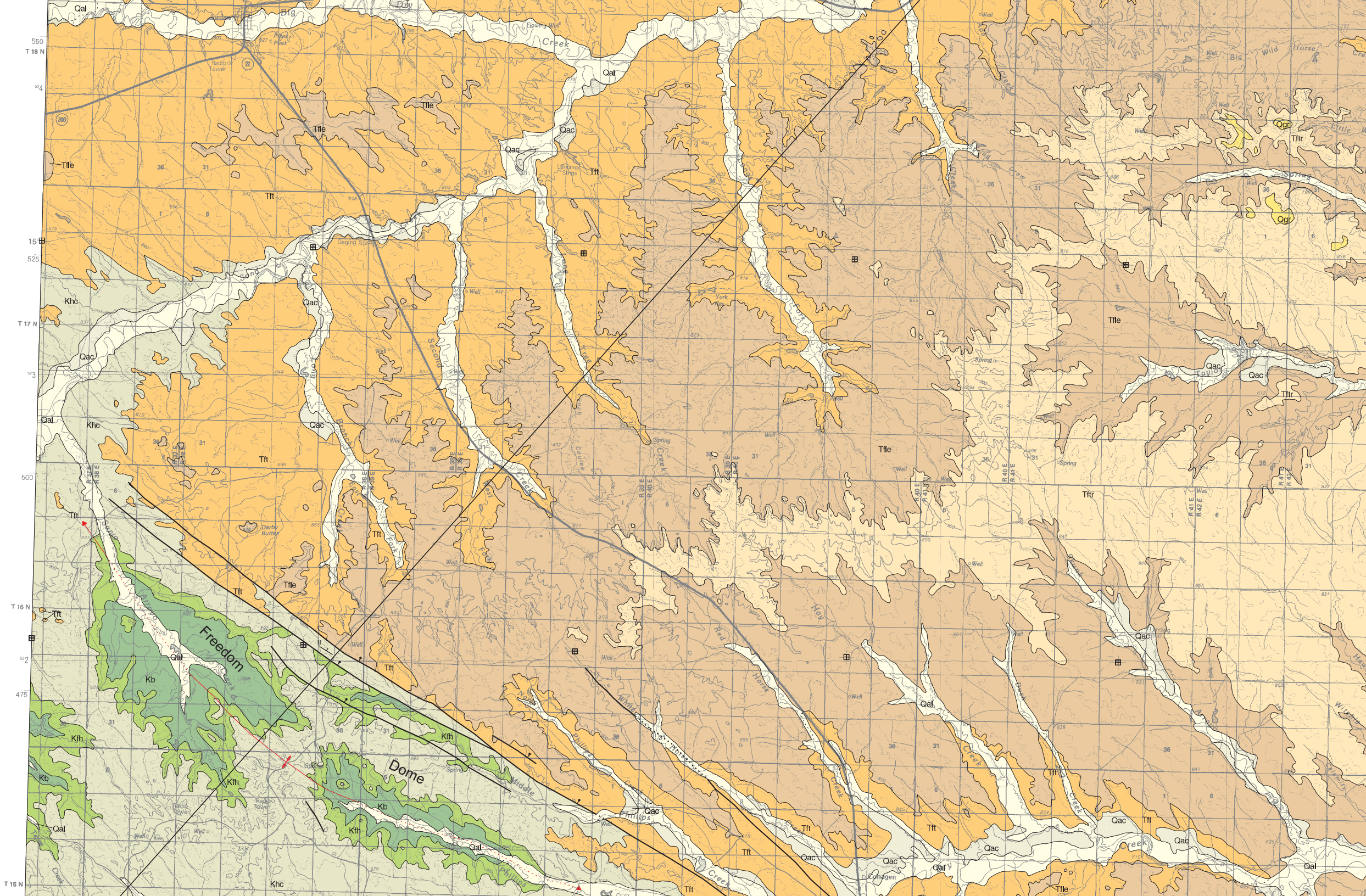
Open File MBMG 514, Plate 1 of 1
Geologic Map, Jordan 30'x60' Quadrangle

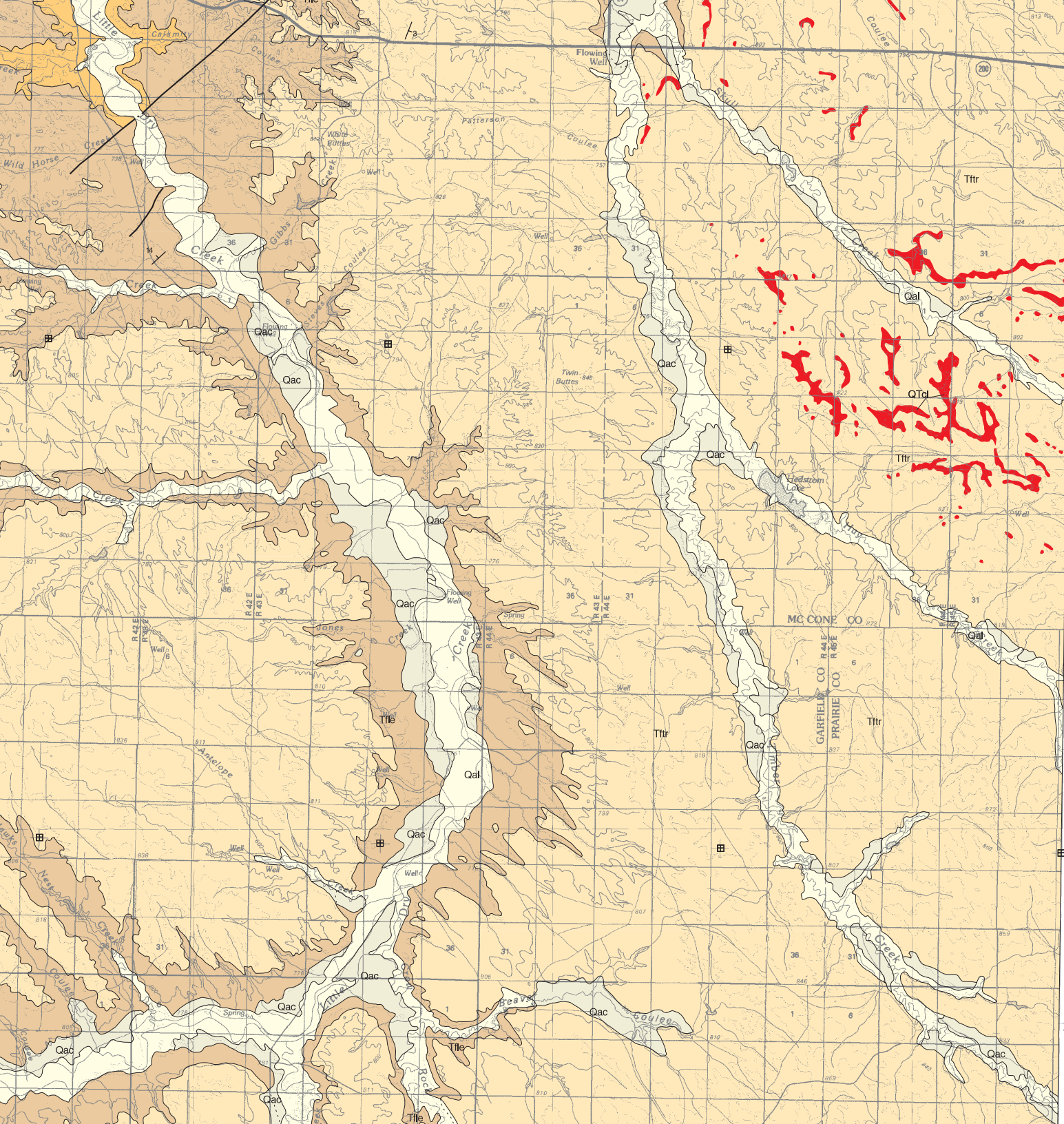




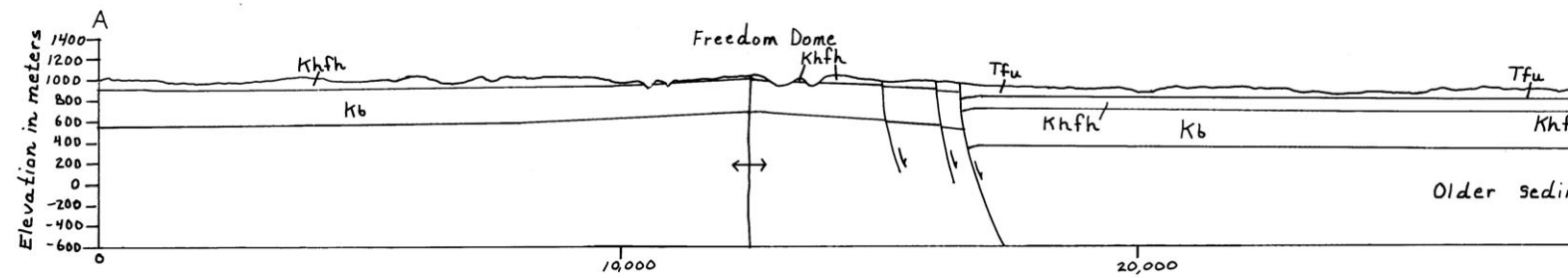
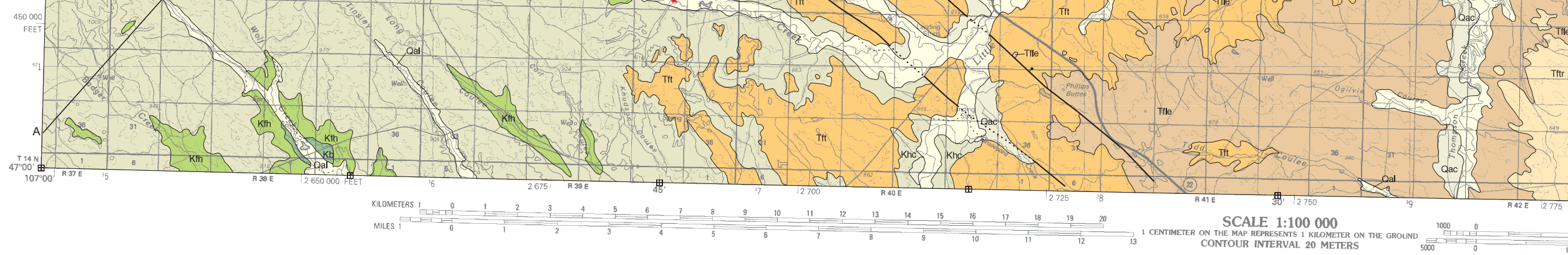
MAP UNITS

Qal	Alluvium of modern channels and flood plains
Qac	Alluvium-colluvium
Qgr	Gravel
QTcl	Clinker
QTgr	Gravel
Ttfr	Tongue River Member of Fort Union Formation
Ttle	Lebo Member of Fort Union Formation
Tft	Tullock Member of Fort Union Formation
Khc	Hell Creek Formation
Kfh	Fox Hills Formation
Kb	Bearpaw Shale





T 18 N
550
T 17 N
525
500
T 16 N
475



Montana Bureau of Mines and Geology
 Open File 514

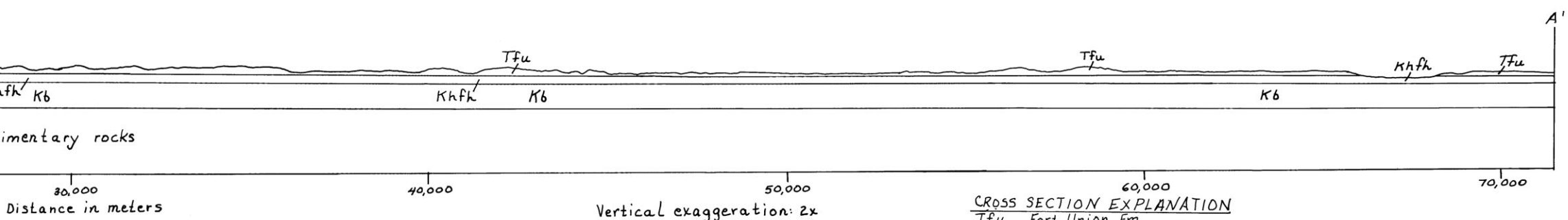
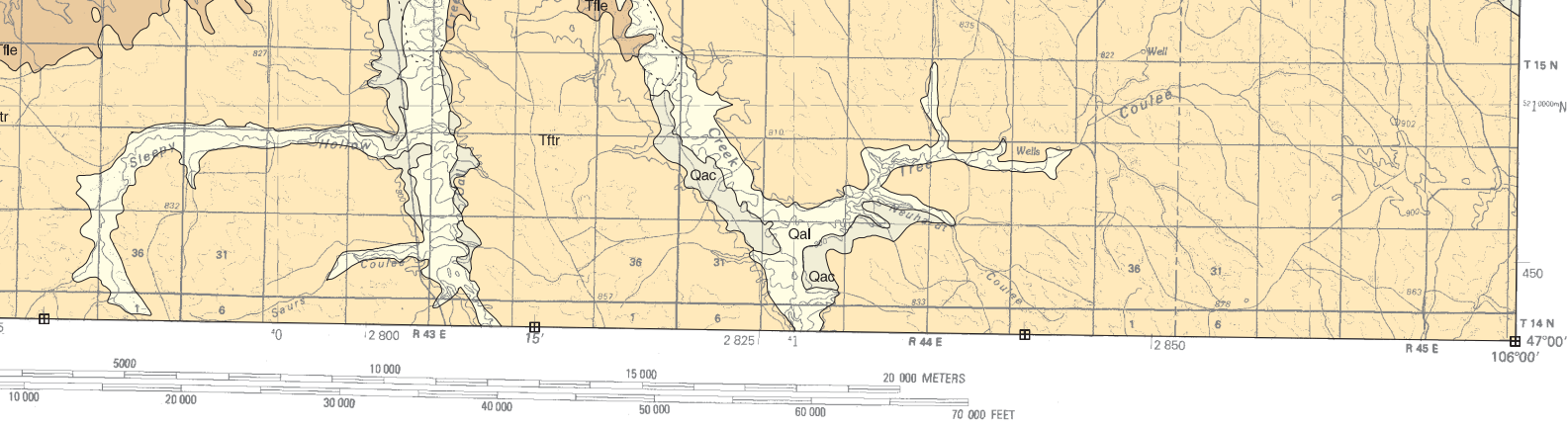
Geologic Map of the Jordan 30' x 60' Quadrangle Eastern Montana

Edith M. Wilde and Susan M. Vuke

2004

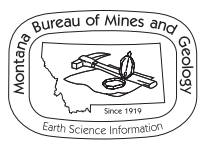
Partial support has been provided by
 Mapping Program of the U.S. Geology

GIS production: Ken Sandau and Pau



Vertical exaggeration: 2x
 Datum: mean sea level
 Surficial deposits not shown.

CROSS SECTION EXPLANATION
 Tfu Fort Union Fm.
 Khfh Hell Creek and Fox Hills Fm., undivided
 Kb Bearpaw Shale



Maps may be obtained from
 Publications Office
 Montana Bureau of Mines and Geology
 1300 West Park Street, Butte, Montana 59701-8997
 Phone: (406) 496-4167 Fax: (406) 496-4451
<http://www.mbm.mtech.edu>

by the STATEMAP component of the National Cooperative Geologic
 Geological Survey under Contract Number 04HQAG0079.
 Paul Thale, MBMG. Map layout: Susan Smith, MBMG.