

Montana Bureau of Mines and Geology  
Open File No. 339

Preliminary Geologic Map of the Nez Perce Pass  
30' x 60' Quadrangle, Western Montana

Mapped and compiled by RB. Berg and J. Lonn

1996

To view a full scale version of this map, [click here](#).

For the text files with the map information, [click here](#).

[Digital data link](#)

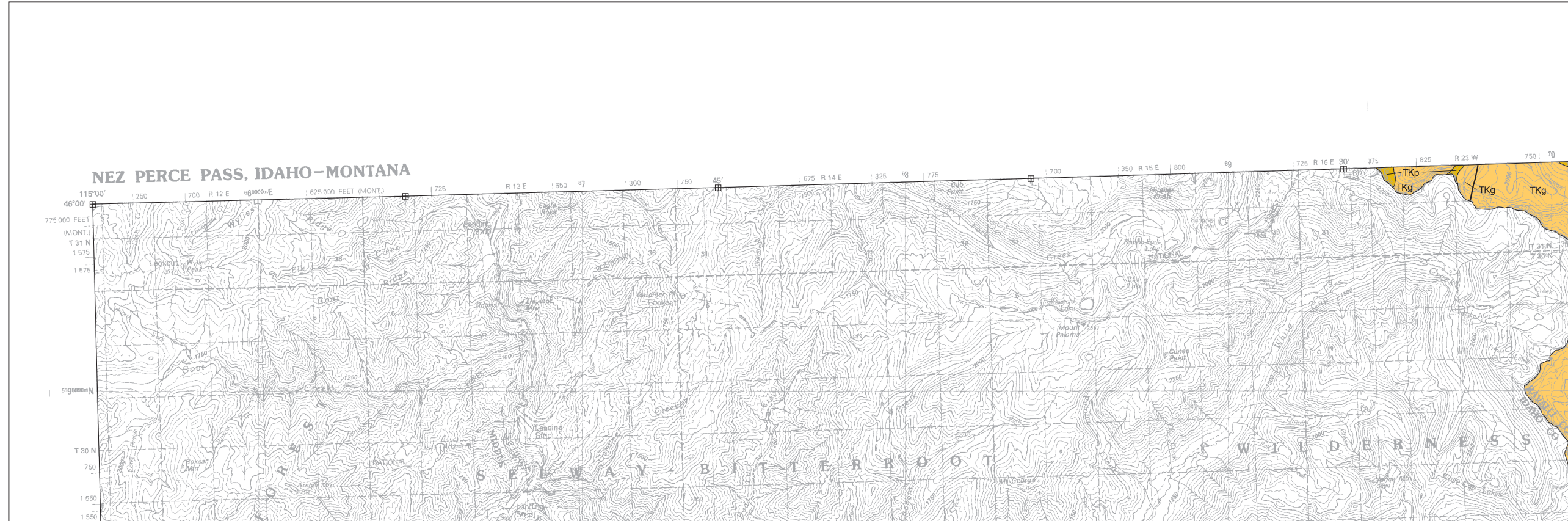
Note— This map was originally published at a scale of 1:100,000 but the page sizes have been modified to fit average printer capabilities (8½ x 14; legal size paper). There is an eighth inch overlap on these pages. A full sized colored print of this map can be ordered from the MBMG Publication Sales Office, 1300 West Park Street, Butte, MT, 59701-8997.

---

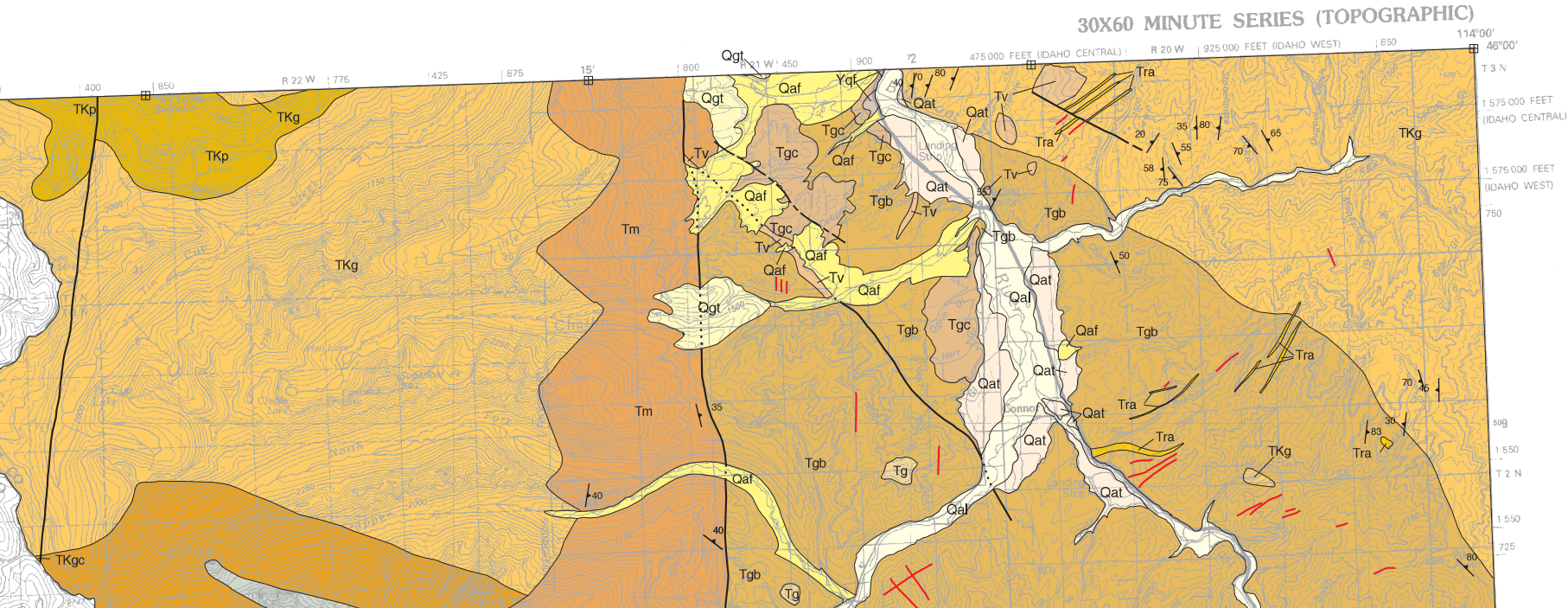
**Phone: 406-496-4167**

**Email: [pubsales@mbmg.mtech.edu](mailto:pubsales@mbmg.mtech.edu)**

Open File MBMG 339, Plate 1 of 1  
Preliminary Geologic Map, Nez Perce Pass 30'x60' Quadrangle



MONTANA BUREAU OF MINES AND GEOLOGY  
 A Department of Montana Tech of The University of Montana

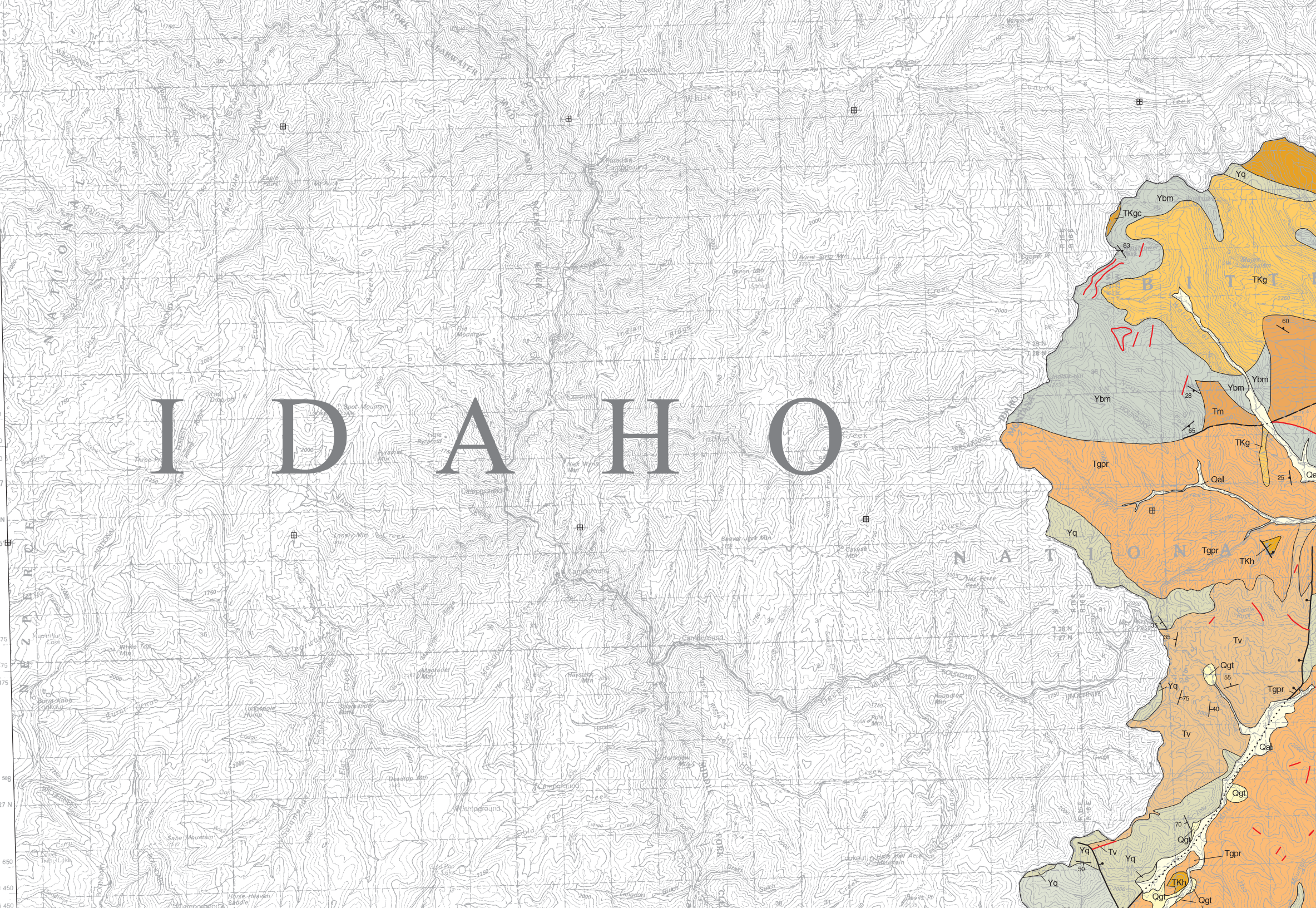


MAP UNITS

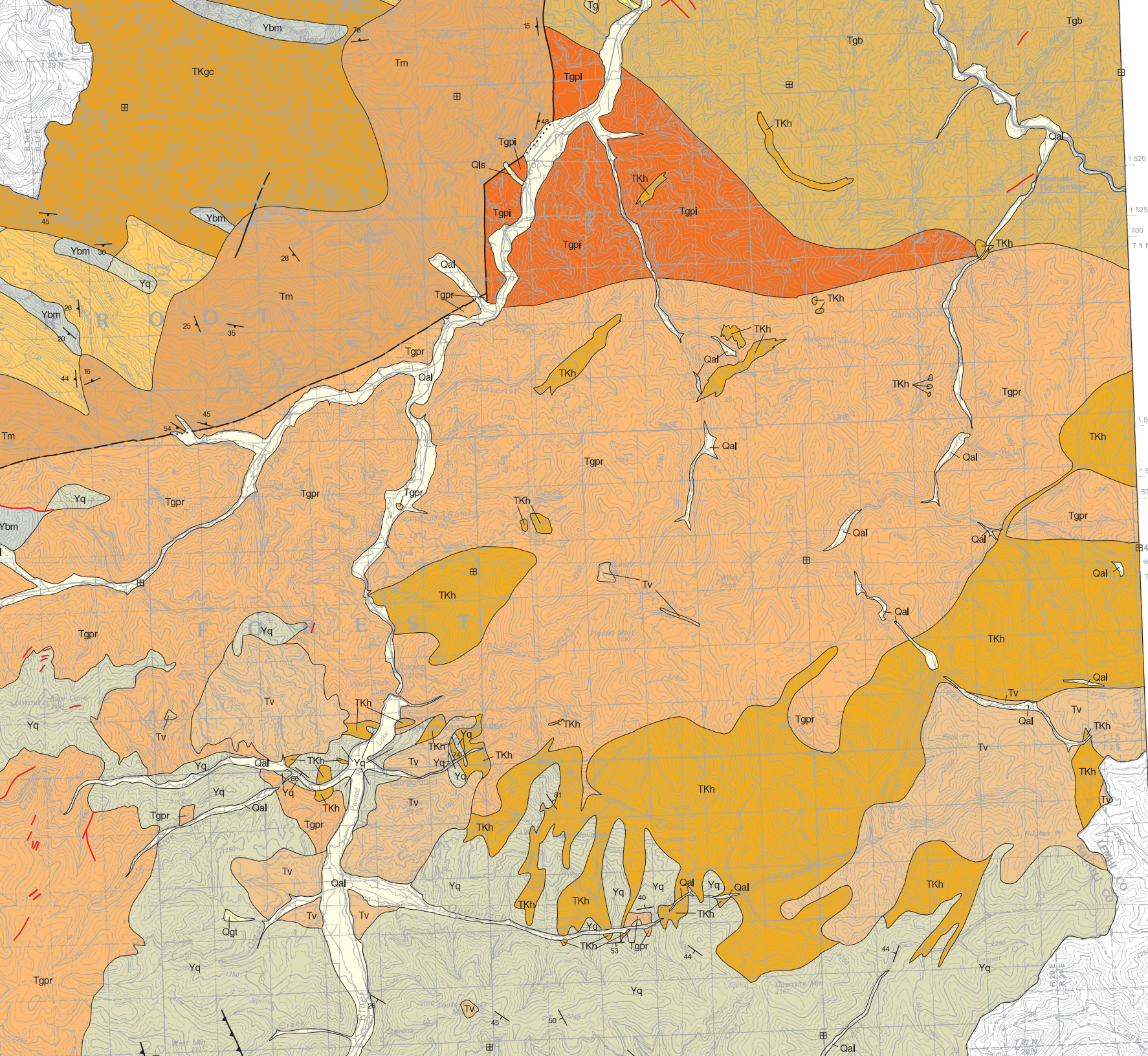
- Qls Landslide deposit
- Qal Alluvium of modern channels and flood plains
- Qat Alluvium of alluvial terrace deposit
- Qaf Alluvial fan deposit
- Qgt Glacial till
- Tgc Gravel and clay
- Tv Volcanic rocks, undivided
- Tra Rhyolite and andesite
- Tm Mylonite
- Tgpr Painted Rocks Pluton
- Tgb Burnt Ridge Pluton
- Tgpl Piquett Creek Pluton

1 550  
725  
1 525  
1 525  
T 29 N  
700  
1 500  
1 500  
807  
T 28 N  
45  
675  
1 475  
1 475  
506  
T 27 N  
650  
1 450  
1 450

# IDAHO



N A T I O N A L



- Tgpi Fiquett Creek Pluton
- Tg Granite
- TKp Granodiorite and monzogranite of the Paradise Pluton
- TKg Granite
- TKgc Canyon Lake Pluton
- TKh Hypabyssal intrusive or flows
- Ymg Metagabbro
- Yagn Augen gneiss
- Yam Amphibolite
- Yq Quartzite, undifferentiated
- Yqs Quartzitic schist
- Yqf Quartzofeldspathic gneiss
- Ybm Gneissic metasedimentary rocks, undivided



Quad index

IDAHO	HAMILTON	PHILIPSBURG
	NEZ PERCE PASS	WISDOM
	BIGHORN CRAGS	SALMON



Base from U.S. Geological Survey  
 Nez Perce Pass 30'x60' topographic quadrangle  
 Map date: 1981  
 Projection: UTM zone 11; 1927 NAD

Montana Bureau of Mines and Geology  
 Open File No. 339  
**Preliminary Geologic Map of the  
 Nez Perce Pass 30' x 60' Quadrangle,  
 Western Montana**

Mapped and Compiled by R.B. Berg and J. Lonn

1996

Partial support has been provided by the STATEMAP component of the  
 Mapping Program of the U.S. Geological Survey under Contract Number

