

Montana Bureau of Mines and Geology
Open File No. 340

Preliminary Geologic Map of the
Hamilton 30' x 60' Quadrangle,
Western Montana

Mapped and Compiled by J. Lonn, and R.B. Berg

1996

To view a full scale version of this map, [click here](#).

For the text files with the map information, [click here](#).

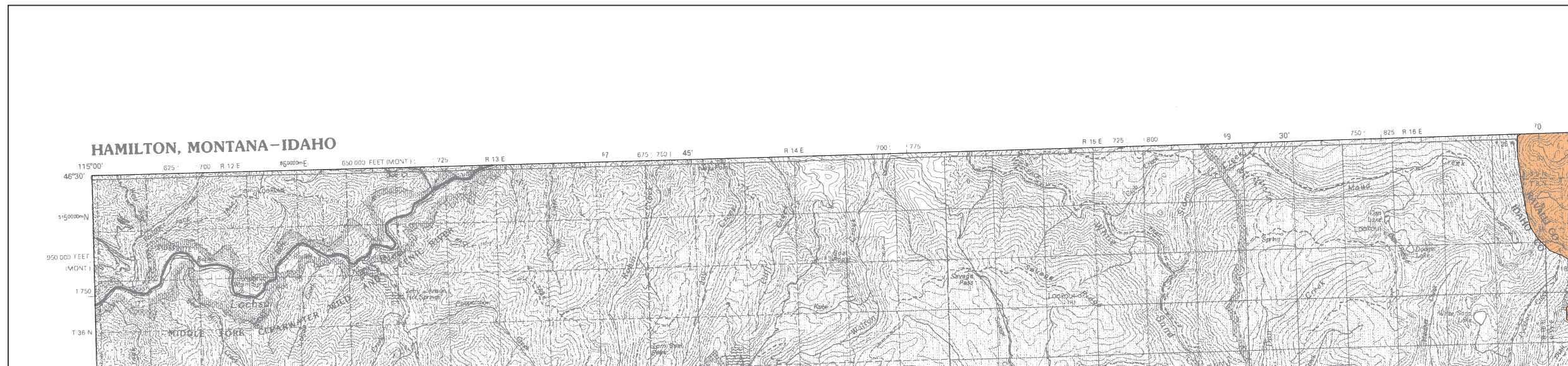
[Digital data link](#)

Note— This map was originally published at a scale of 1:100,000 but the page sizes have been modified to fit average printer capabilities (8½ x 14; legal size paper). There is a an eighth inch overlap on these pages. A full sized colored print of this map can be ordered from the **MBMG Publication Sales Office, 1300 West Park Street, Butte, MT, 59701-8997.**

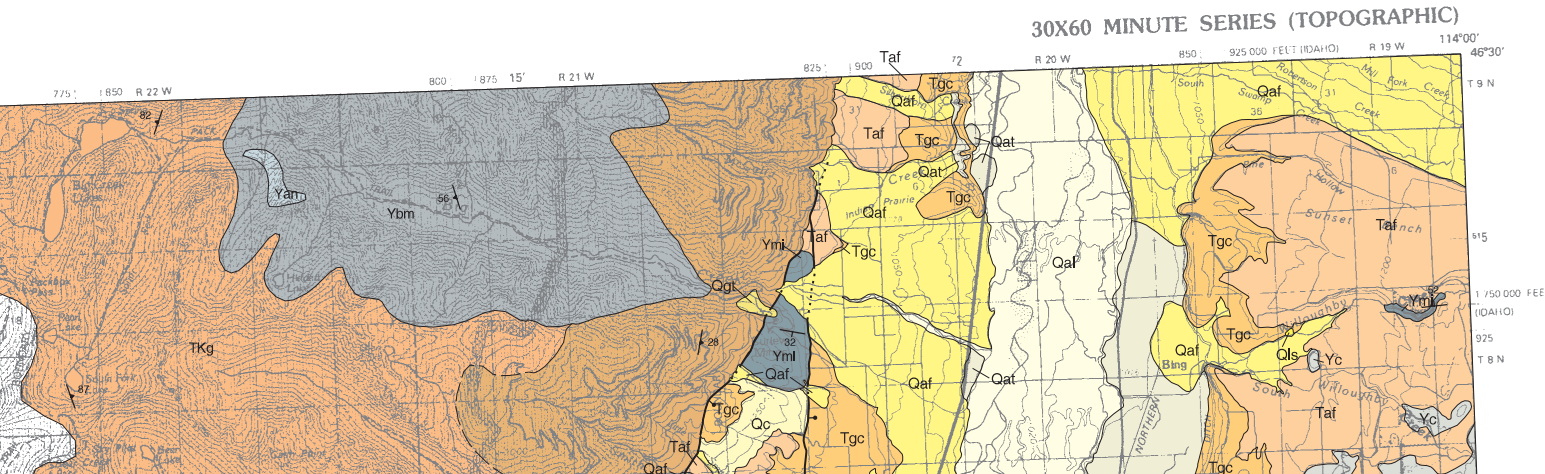
Phone: 406-496-4167

Email: pubsales@mbmg.mtech.edu

Open File MBMG 340, Plate 1 of 1
Geologic Map, Hamilton 30'x60' Quadrangle

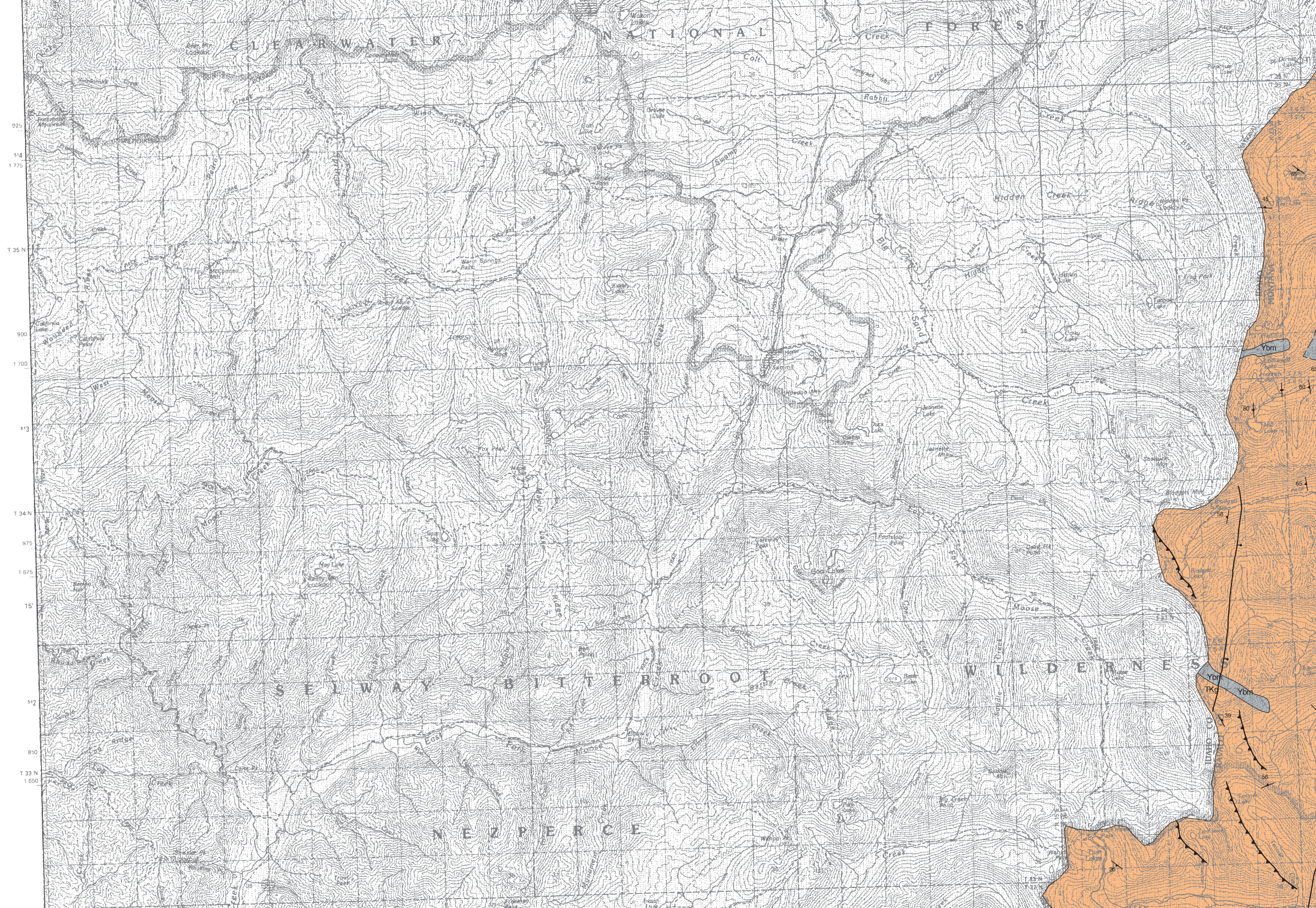


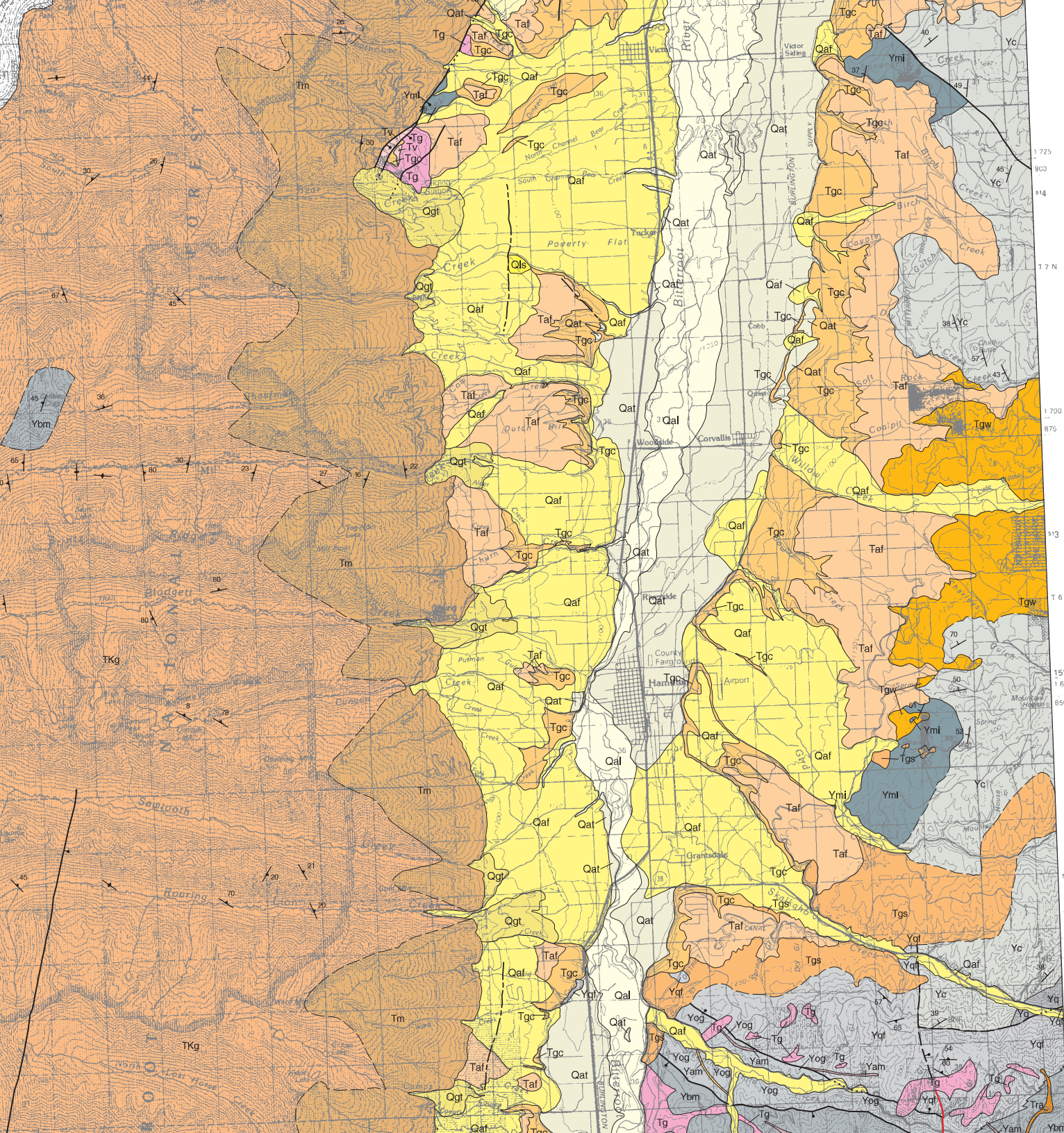
MONTANA BUREAU OF MINES AND GEOLOGY
 A Department of Montana Tech of The University of Montana



MAP UNITS

- Qls Landslide deposit
- Qal Alluvium of modern channels and flood plains
- Qat Alluvium of alluvial terrace deposit
- Qaf Alluvial fan deposit
- Qc Colluvium
- Qgt Glacial till
- Taf Alluvial fan deposit



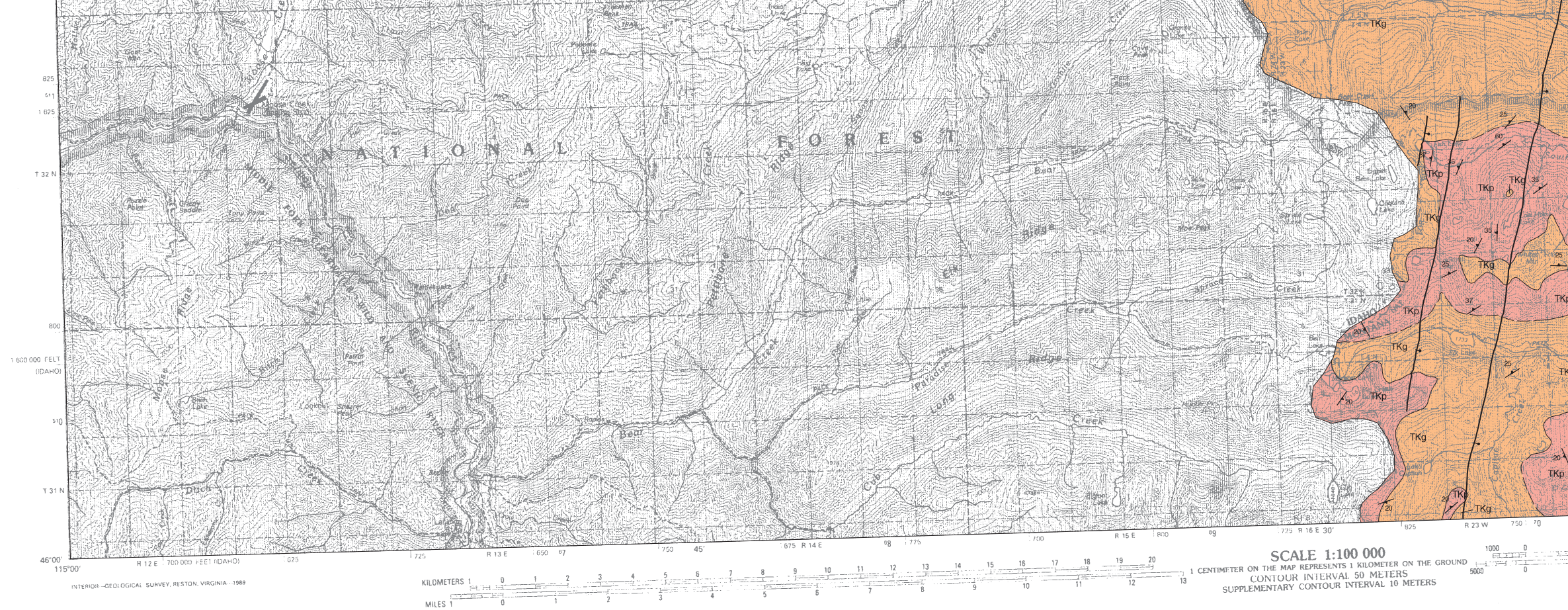


- Taf Alluvial fan deposit
- Tgc Gravel and clay
- Tv Volcanic rocks, undivided
- Tra Rhyolite and andesite
- Tg Granite
- Tgw Granodiorite of the Willow Creek Stock
- Tgs Granodiorite of the Skalkaho Stock
- Tm Mylonite
- TKp Granodiorite and monzogranite of the Paradise Pluton
- TKg Granite
- TKag Augen gneiss
- Ymi Missoula Group
- Yc Middle Belt carbonate, informal
- Yq Quartzite, undifferentiated
- Ybm Gneissic metasedimentary rocks, undivided
- Ycg Calc-silicate gneiss of the middle Belt carbonate
- Yqf Quartzofeldspathic gneiss
- Yam Amphibolite
- Yog Orthogneiss
- Yan Anorthosite



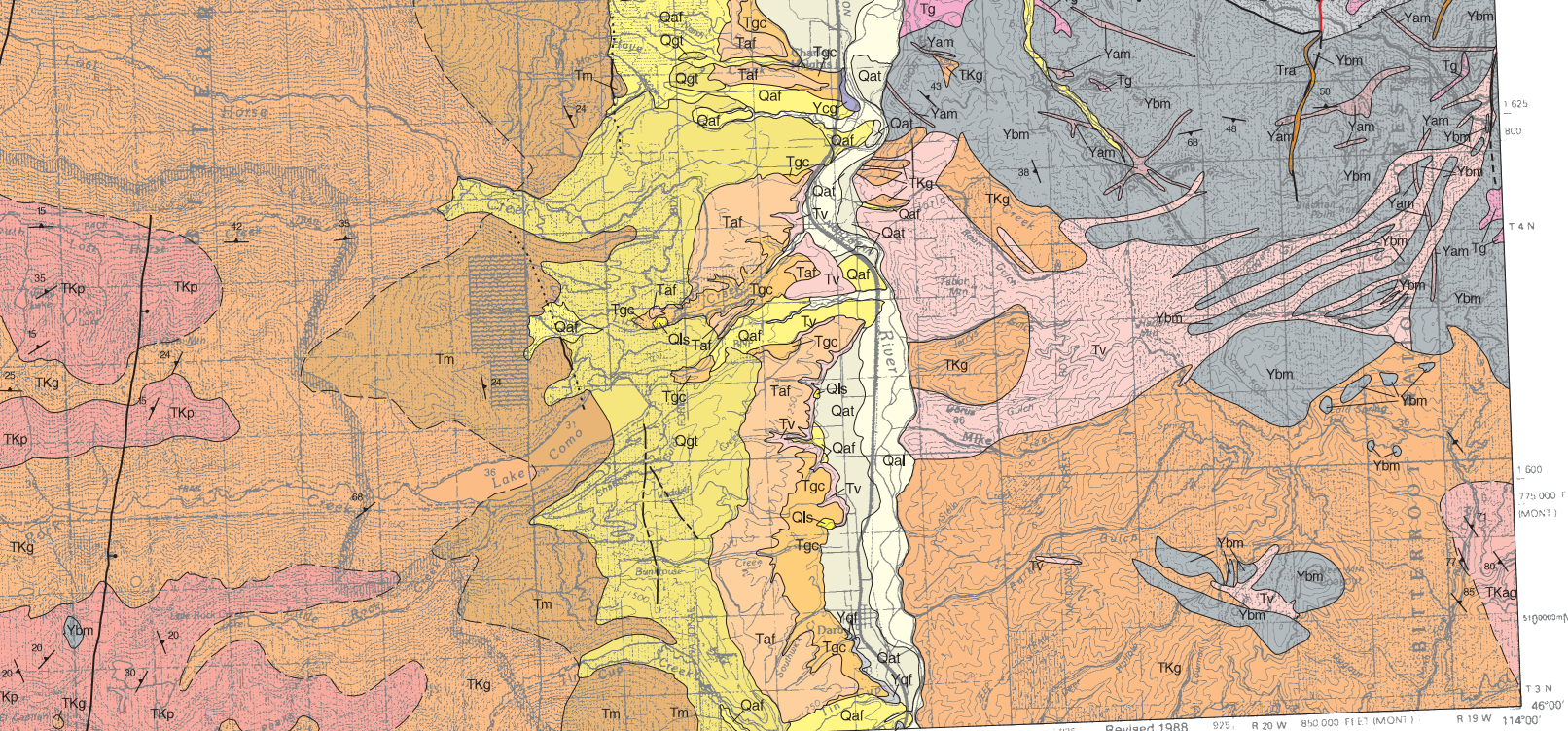
1 725
900
814
1 700
875
513
1 600
825

1 7 N
1 6 N
1 5 N



Montana Bureau of Mines and Geology
 Open File No. 340
**Preliminary Geologic Map of the Hamilton
 30' x 60' Quadrangle**
 Mapped and Compiled by J. Lonn and R.B. Berg
 1996

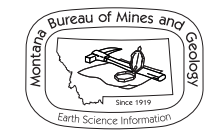
Partial support has been provided by the STATEMAP component
 Mapping Program of the U.S. Geological Survey under Contract



HAMILTON, MONTANA-IDAHO
N4600 - W11400/30X60
1980



Revised by	Date
Jeff Lonn	11/00



Maps may be obtained from
 Publications Office
 Montana Bureau of Mines and Geology
 1300 West Park Street, Butte, Montana 59701-8997
 Phone: (406) 496-4167 Fax: (406) 496-4451
<http://www.mbm.mtech.edu>

ment of the National Cooperative Geologic
 act Number 1434-95-A-91368.