

MBMG Report of Investigation 37, Plate 1

## Managed Aquifer Recharge (MAR) Surface Infiltration Suitability

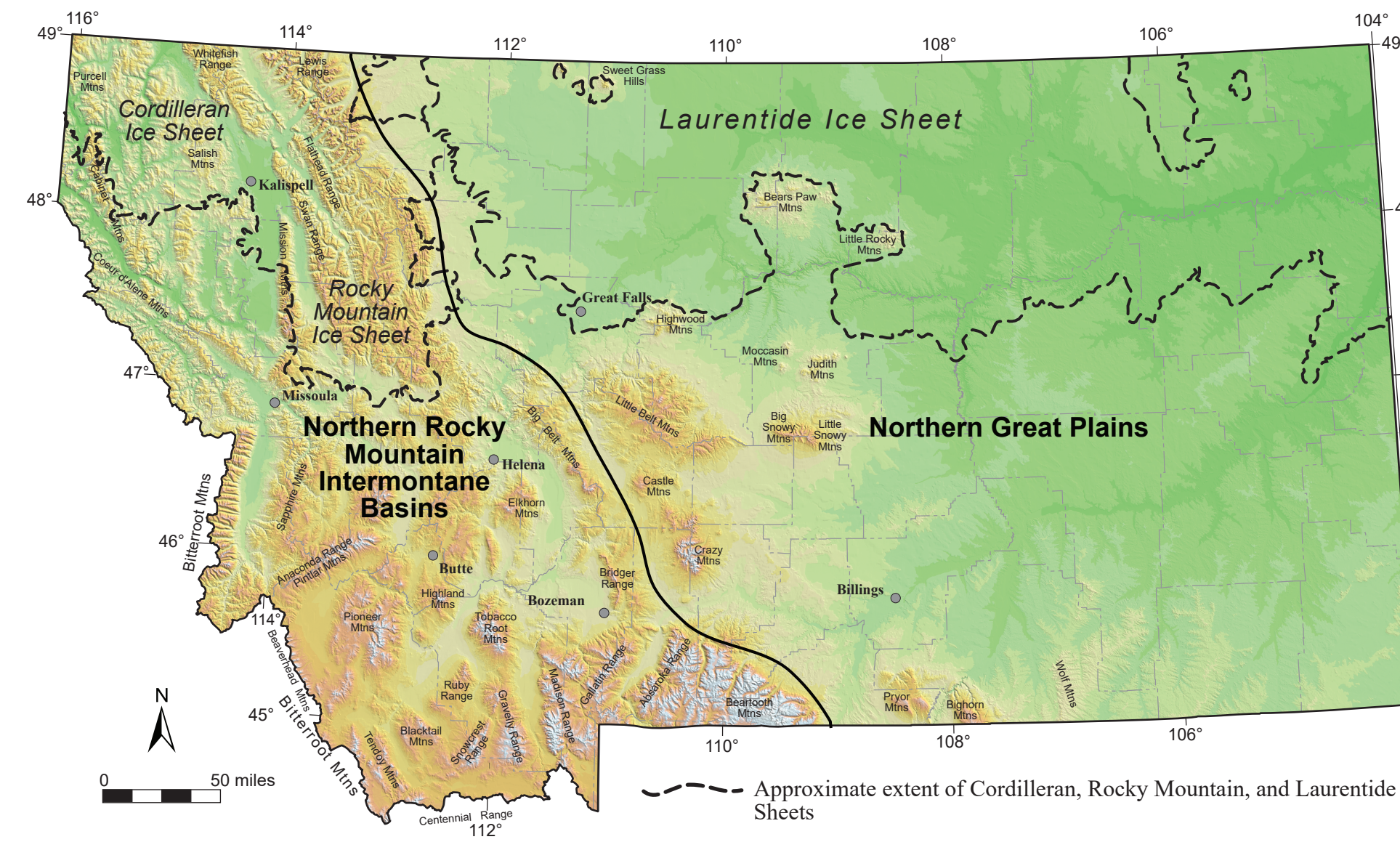
Ann E.H. Hanson, Andrew L. Bobst, Ginette Abdo,  
 John I. LaFave, Mary Sutherland

2024

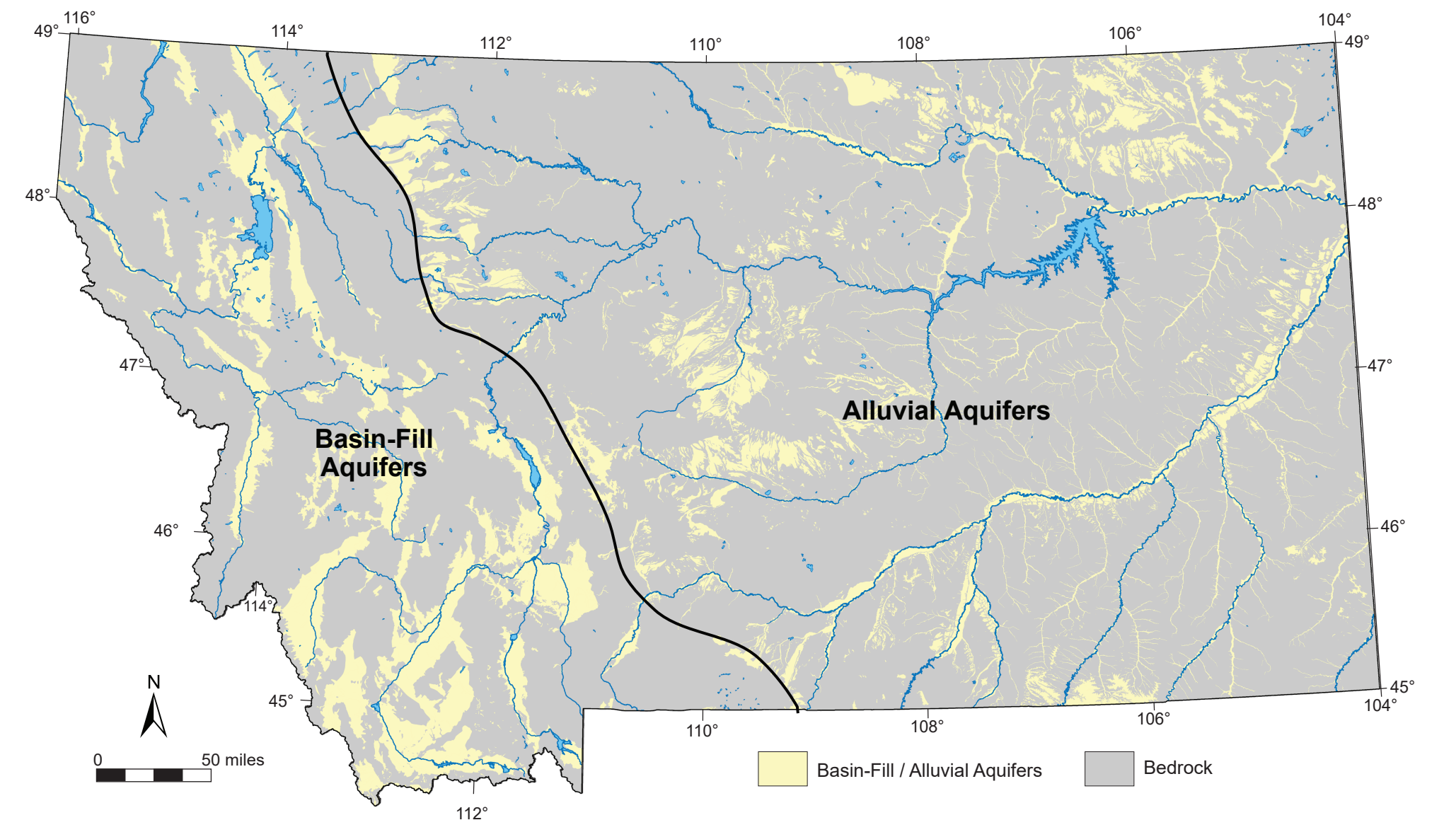
Plate 1. Statewide managed aquifer recharge (MAR) surface infiltration suitability was developed by multi-criteria decision analysis (MCDA) using four criteria (30% geology/aquifer, 30% depth to groundwater, 30% soil permeability, and 10% topographic slope). The analysis was constrained to basin-fill and alluvial surficial geologic units (bedrock was not analyzed). Suitability scores were classified as high, medium, and low suitability for surface infiltration.



Counties, roads, and cultural features.



Physiographic provinces: Northern Rocky Mountain Intermontane Basins and the Northern Great Plains.



Simplified geology adapted from the "Principal Aquifers of Montana" Map (Crowley and others, 2017).